

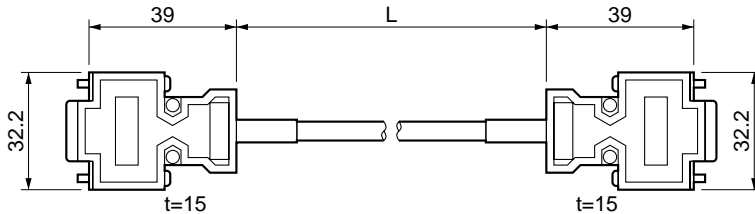
## ■ Communications Cables (XW2Z-□J-C1)

These Communications Cables connect the communications port of an XW2B-40J6-4A Servo Relay Unit that supports communications and a Programmable Controller Serial Communications Unit or Board.

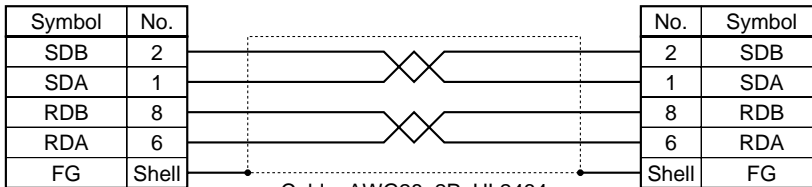
### ● Cable Models

Model	Length (L)	Outer diameter of sheath	Weight
XW2Z-100J-C1	1 m	10.0 dia.	Approx. 0.1 kg
XW2Z-200J-C1	2 m		Approx. 0.2 kg

### ● Connection Configuration and External Dimensions



### ● Wiring



Connector:

XM2A-0901 (OMRON)

Connector Hood:

XM2S-0911 (OMRON)

Connector:

XM2A-0901 (OMRON)

Connector Hood

XM2S-0911 (OMRON)