

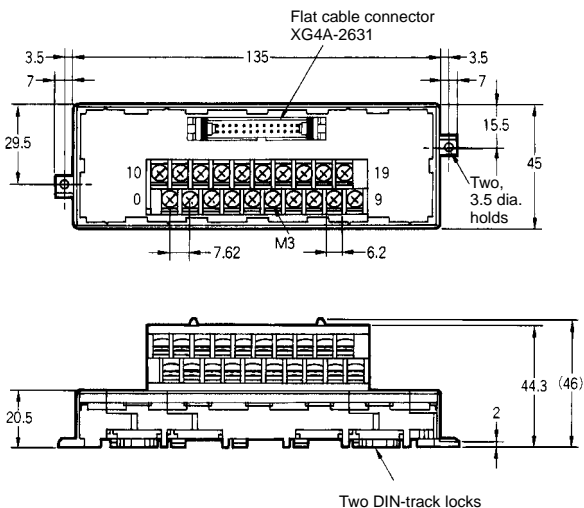
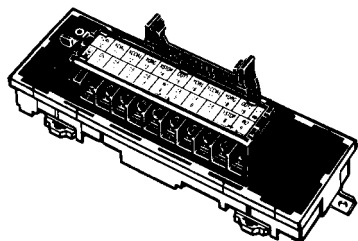
XW2B MC Unit Terminal Block with M3.0 Screw Terminals for the CV500-MC221 for Two Axes

Ordering Information

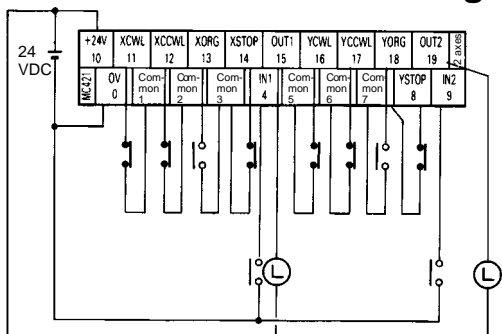
Model	Applicable Unit
XW2B-20J6-6	CV500-MC221 (for two axes)

Dimensions

XW2B-20J6-6



Terminal Block Labels/Wiring Example

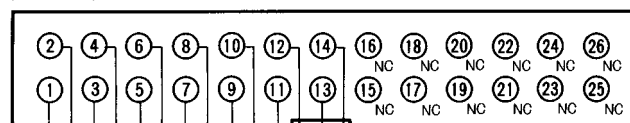


■ Corresponding Pins of the MC Unit for Two Axes

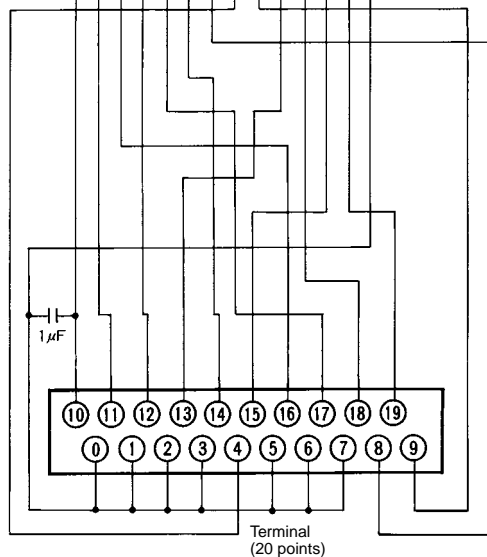
XW2B side		CV500-MC221 side		
Terminal number	Label	Symbol	Name	Pin number
0	0V	DC GND	24-V input ground	14
1	Common	DC GND	24-V input ground	14
2	Common	DC GND	24-V input ground	14
3	Common	DC GND	24-V input ground	14
4	IN1	IN1	General-purpose input 1	8
5	Common	DC GND	24-V input ground	14
6	Common	DC GND	24-V input ground	14
7	Common	DC GND	24-V input ground	14
8	YSTOP	YSTOP	Y-axis immediate stop input	7
9	IN2	IN2	General-purpose input 2	9
10	+24V	+24V	24-V input	1
11	XCWL	XCWL	X-axis CW limit input	2
12	XCCWL	XCCWL	X-axis CCW limit input	4
13	XORG	XORG	X-axis origin proximity input	10
14	XSTOP	XSTOP	X-axis immediate stop input	6
15	OUT1	OUT1	General-purpose output 1	12
16	YCWL	YCWL	Y-axis CW limit input	3
17	YCCWL	YCCWL	Y-axis CCW limit input	5
18	YORG	YORG	Y-axis origin proximity input	11
19	OUT2	OUT2	General-purpose output 2	13

■ Circuit/Terminal Arrangement

Flat cable connector
XG4A-2631
(mated side)



Triangle mark



Terminal
(20 points)