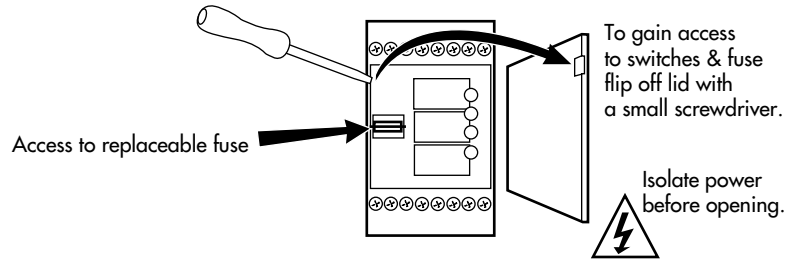
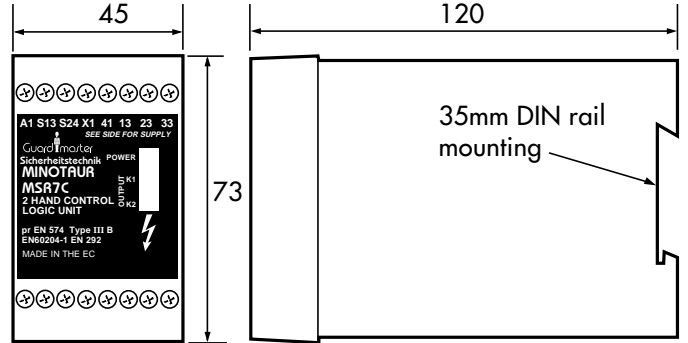


Guardmaster[®] MINOTAUR 2 HAND CONTROL LOGIC UNIT

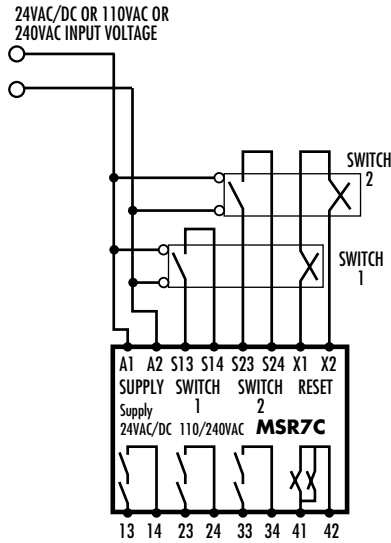
MSR7C For Capacitive Palm Button 2 hand control switch units with 2 x 1 N/O & 1N/C buttons.

Technical Specifications

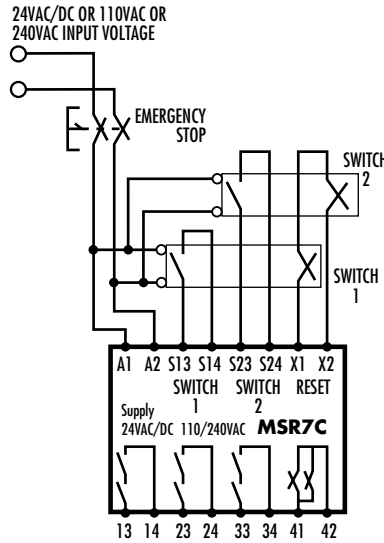
- Power supply: 24V AC/DC or 120V AC or 240V AC
(See side of unit).
- Power drain: <4VA.
- Internal fuse: 500mA (Replaceable).
- Safety Inputs: Connections for 2 buttons (each 1N/O & 1N/C).
Red = Power On, Green 1 = Channel 1 closed,
Green 2 = Channel 2 closed.
- Relay outputs: 3 N/O (Safety), 1 N/C (Auxiliary).
- Maximum switched current: 4A at 250V AC, 2A at 30V DC.
- Drop out time: 10mS.
- Standards conformity: pr EN 574 type IIIB, EN 60204,
BS EN 292.
- Mounting: 35mm DIN-rail.
- Enclosure protection: IP 20 DIN 0470.
- Ambient temperature: -10°C to +55°C.
- Case: Polycarbonate.



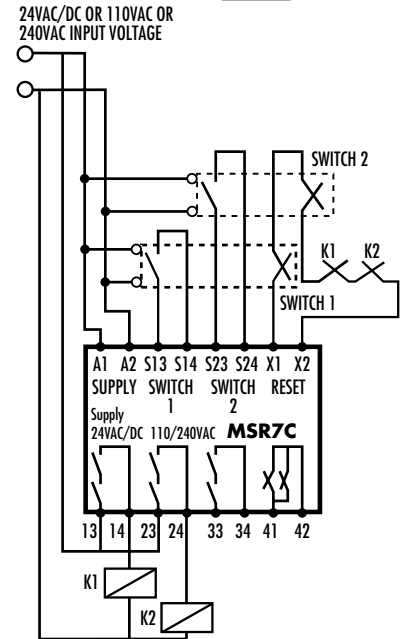
APPLICATION EXAMPLES



CAPACITIVE PALM BUTTON
2 HAND CONTROLLER

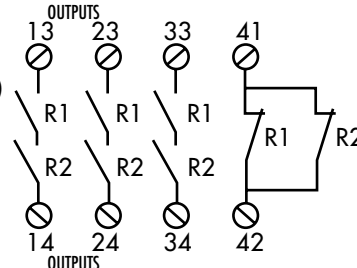
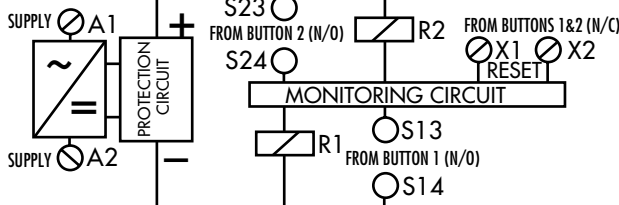


CAPACITIVE PALM BUTTON 2 HAND
CONTROLLER WITH EMERGENCY STOP



CAPACITIVE PALM BUTTON 2 HAND
CONTROLLER WITH 2 CONTACTORS
AND CONTACTOR MONITORING

Internal Circuit



AUDIN Composants & systèmes d'automatisme
7 bis rue de Tinqueux- 51100 Reims - France
Téléphone : 03 26 04 20 21 - Télécopie : 03 26 04 28 20
Site internet : <http://www.audin.fr>
E-mail : info@audin.fr