



## **Industrial PDA *with Windows® CE***



**Pegaso**



**Pegaso in Dock**

## ***Quick Reference Guide***

Datalogic Mobile, Inc  
1505 Westec Dr.  
Eugene, Oregon 97402  
Telephone: (541) 743-4800  
Fax: (541) 743-4900

An Unpublished Work - All rights reserved. No part of the contents of this documentation or the procedures described therein may be reproduced or transmitted in any form or by any means without prior written permission of Datalogic Mobile, Inc. or its affiliates or subsidiaries ("Datalogic" or "Datalogic Mobile"). Owners of Datalogic products are hereby granted a non-exclusive, revocable license to reproduce and transmit this documentation for the purchaser's own internal business purposes. Purchaser shall not remove or alter any proprietary notices, including copyright notices, contained in this documentation and shall ensure that all notices appear on any reproductions of the documentation.

Should future revisions of this manual be published, you can acquire printed versions by contacting your Datalogic representative. Electronic versions may either be downloadable from the Datalogic Mobile website ([www.mobile.datalogic.com](http://www.mobile.datalogic.com)) or provided on appropriate media. If you visit our website and would like to make comments or suggestions about this or other Datalogic publications, please let us know via the "Contact Datalogic" page.

## Disclaimer

Datalogic has taken reasonable measures to provide information in this manual that is complete and accurate, however, Datalogic reserves the right to change any specification at any time without prior notice.

Datalogic is a registered trademark of Datalogic S.p.A. and the Datalogic logo is a trademark of Datalogic S.p.A. all licensed to Datalogic Mobile, Inc. All other trademarks and trade names referred to herein are property of their respective owners.

Falcon® is a registered trademark of Datalogic Mobile, Inc. and of its wholly owned subsidiaries.

Microsoft Windows®, Windows® 2000, Windows® CE, Windows® NT, and Windows® XP are registered trademarks of Microsoft Corporation.

Wavelink® and Wavelink Avalanche® are registered trademarks of Wavelink® Corporation and Avalanche Site Edition™ is a trademark of Wavelink® Corporation.

## Patents

This product may be covered by one or more of the following patents:

4,861,972 • 4,866,257 • 4,879,456 • 5,198,649 • 5,208,449 • 5,212,372 • 5,247,161 • 5,311,000 • 5,440,110 • 5,481,098 • 5,493,108 • 5,508,505 • 5,664,231 • 5,671,374 • 5,686,716 • 6,041,374 • 6,412,698 • 6,415,978 • 6,454,168 • 6,478,224 • 6,513,714 • 6,536,670 • 6,561,427 • 6,585,157 • 6,923,377 • 7,108,170 • D377345 • CA2,188,399 • Other U.S. and Foreign Patents Pending.

# Table of Contents

<b>Pegaso™ Industrial PDA with Windows® CE .....</b>	<b>3</b>
Overview .....	3
Features .....	3
Getting Started .....	5
Powering the Pegaso .....	5
Battery Pack .....	5
Installing the Battery Pack .....	7
Battery Power .....	8
System Tray Battery Status Indicators .....	8
Charging the Batteries .....	10
Charging with the Dock .....	11
Charging with a Battery Charger .....	12
Backup Battery .....	12
Setting Up the Mobile Computer .....	12
Touchscreen Calibration .....	13
Getting Connected .....	13
Setting the Date and Time .....	15
Using the Stylus .....	15
Ambient Light Sensor .....	16
Navigating the Display .....	16
Keypad .....	19
Scanning Bar Codes .....	22
Laser Scanning .....	22
Persistent Memory .....	23
Context Sensitive Help .....	24
Resetting the Pegaso .....	24
Warm Reset .....	24
Cold Reset .....	25
Safe Reset .....	26
Maintaining the Pegaso .....	27
Troubleshooting .....	28
RF Connectivity Troubleshooting .....	31
Technical Support .....	32
Datalogic Mobile Website Support .....	32
Reseller Technical Support .....	32
Telephone Technical Support .....	32
Resources .....	32
 <b>Wavelink Avalanche SE™ .....</b>	 <b>33</b>
Quick Start .....	33
Install Avalanche SE .....	33
Access the Avalanche SE Console .....	35
Connect To Your Mobile Devices .....	36
Manage Mobile Devices .....	37
Configure Network and Wireless Settings .....	38
Install Additional Software Packages .....	39

---

Connect to Devices Using Remote Control .....	40
Additional Resources .....	42
<b>Datalogic Mobile Pegaso™ Windows® CE</b>	
<b>End User License Agreement.....</b>	<b>43</b>
<b>Appendix A: Microsoft® Windows® CE</b>	
<b>End User License Agreement.....</b>	<b>48</b>
<b>Datalogic Mobile Pegaso™ Windows® CE</b>	
<b>Product Warranty.....</b>	<b>50</b>
<b>Safety Information.....</b>	<b>52</b>
Laser Safety Label .....	52
Advisory Statement .....	52
Regulatory Statements .....	52
Industry Canada statement: .....	53
<b>Laser Safety.....</b>	<b>55</b>
English .....	55
French .....	55
German .....	56
Italian .....	56
Danish .....	57
Dutch .....	57
Swedish .....	57
Finnish .....	58
Norwegian .....	58
Portuguese .....	59
Spanish .....	59
Chinese .....	60
Japanese .....	61
<b>Europe – EU Declaration of Conformity .....</b>	<b>62</b>

# **Pegaso™**

## **Industrial PDA**

### ***with Windows® CE***

## **Overview**

The Datalogic™ Pegaso industrial PDA combines the flexibility of Windows® CE with the power of the Intel XScale processor, Wi-Fi wireless technology, a large color display, and laser scanning in an ergonomic PDA. The Pegaso is a rugged device suitable for both Commercial and Industrial environments, as well as Retail-in-Store inventory management applications (back room inventory management and shipping/receiving, shelf inventory management, price lookup, and relabeling applications). The Pegaso will handle 5' / 1.5M drops to concrete, and has an IP64 environmental rating.

The Datalogic Desktop Utility (DDU), Datalogic Configuration Utility (DCU), and Wavelink Avalanche™ are included with every unit, providing remote management and configurability.

## **Features**

- End user configurable keypad with custom overlay available
- Best in class Full VGA 3.6" Display for indoor and outdoor use
- Ergonomic design
- 2200 mAHr battery or 3300 mAh extended battery
- Bluetooth direct to Host PC (no dock necessary), 802.11b/g available
- User accessible SDIO slot on top
- No tools required for attachables & expansion
- High power output (500mA) on base connector, allows multiple attachables or tethered/powered scanners
- Single piece quick-replace battery/cover
- 64 or 128 MB RAM, 128 MB Flash

**Figure 1. Pegaso Front & Rear Views**



For a complete description of each key on the Pegaso, refer to page 19 in this manual. Also refer to the *Pegaso Windows® CE Product Reference Guide (PRG)*, available on the Pegaso Product CD included with each unit, or from the Data-logic Mobile web site at [www.mobile.datalogic.com](http://www.mobile.datalogic.com).

## Getting Started

Before using the Pegaso for the first time, you must install the Battery Pack into the unit, then charge both the Battery Pack and the Backup Battery. See Installing the Battery Pack on page 7 for instructions.



**CAUTION**

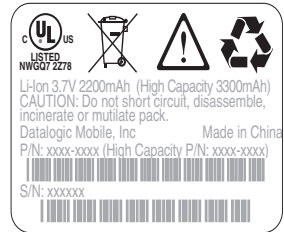
**You must charge the battery pack and backup battery in a dock or with a power cable prior to your first use of the Pegaso. The initial charge time is approximately 4 hours. See Charging the Batteries on page 10 for more information.**

## Powering the Pegaso

### Battery Pack

The battery pack in the Pegaso is a 3.7 V, 2200 mAh or 3300 mAh Lithium Ion battery pack. A message dialog box will appear when the battery pack reaches a low state.

After charging the first time, a complete charge takes about four (4) hours depending on the battery pack's state and the recharging method. A sample battery pack label is shown at right. The label on your unit may vary from the illustration.





### CAUTION

You must charge the battery pack and backup battery in a dock or with a power cable prior to your first use of the Pegaso. The initial charge time is approximately 4 hours.

If you remove the battery pack or it fails, there is a 30-minute window in which to insert a charged battery pack before the backup battery fails. If your backup battery fails, the contents of the RAM memory will be lost. If your backup battery is less than fully charged, there is a smaller window of time available. Usage time will be reduced, also.

Always charge within temperature range of 32°–113°F (0°–40°C). Regularly charging near the temperature limits will increase the time necessary to fully charge the battery, and will shorten the battery's useful life.

Use only the authorized power supplies, battery packs, chargers, and docks supplied by your Datalogic reseller. Use only the battery pack that is specified. Only use the battery with a charging system that has been qualified with the system per this standard. Use of an unqualified battery or charger may present a risk of fire, explosion, leakage, or other hazard. Unauthorized battery pack and improper use of either battery pack or charging system may present a risk of fire, explosion, leakage or other hazards. The use of other power supplies can damage the unit and void your warranty. Refer to the *PRG* for the correct power supplies and Accessories.



**WARNING**

Lithium-ion battery packs may get hot, explode, ignite, or/and cause serious injury if exposed to abusive conditions.

- Do not place the battery in or near fire, direct sunlight, or other high temperature locations, or heat the battery.
- Do not connect the positive terminal and negative terminal of the battery to each other or short circuit battery terminals with any metal object (such as wire, coin or metallic object).
- Do not expose the battery to liquids, or allow to get wet.
- Do not disassemble, modify, open, crush, bend, deform, puncture, shred, remanufacture or pierce the battery. The battery contains safety and protection devices, which, if damaged, may cause the battery to generate heat, explode or ignite.
- Use only battery packs that have been authorized by Datalogic per IEEE Standard 1725-200x for GSM/GPRS/EDGE operation.
- Promptly dispose of used batteries in accordance with local regulations.
- Battery usage by children should be supervised.
- Avoid dropping the PDA or battery. If the PDA or battery is dropped, especially on a hard surface, and the user suspects damage, return it to a service center for inspection.
- Only use the battery for the system for which it is specified.

In the event the battery leaks and the fluid gets into your eye, do not rub the eye. Rinse well with water and immediately seek medical care. If left untreated, the battery fluid could cause damage to the eye.



Datalogic recommends annual replacement of rechargeable battery packs to ensure maximum performance.

## Installing the Battery Pack



When you first remove the Pegaso from the box, you must charge both the battery pack and the backup battery for a minimum of 4 hours.

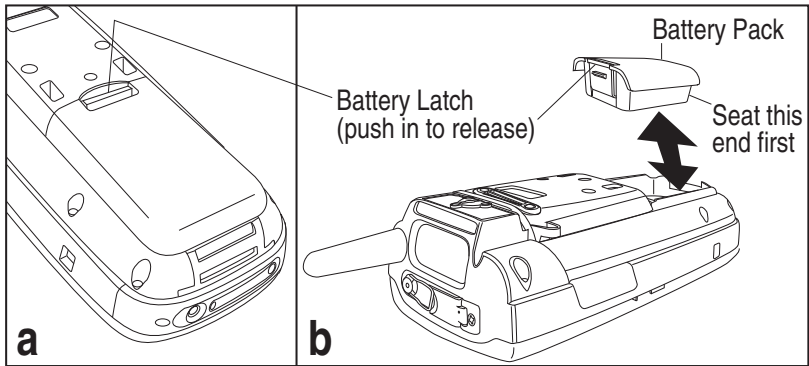
The Pegaso's Battery and its cover are integrated — they do not come apart.

Complete the following instructions to install the battery pack:

1. Loosen the elastic handstrap by releasing it from the bottom of the unit (refer to the *PRG*).
2. Orient the battery pack with the latch facing toward the top of the Pegaso (refer to [Figure 2 on page 8](#)).
3. Replace the battery door by inserting the bottom tab into the unit, then clicking the latch into place. If the battery pack is installed incorrectly, it will not seat properly.

- 4. Replace the handstrap at the bottom of the unit.

**Figure 2. Installing the Battery Pack**



## Battery Power






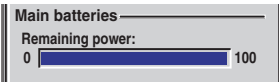
If you remove the battery pack or the battery fails, you have about 30 minutes to swap in a new battery pack or charge the battery pack before the backup battery fails (if the backup battery has been fully charged).

## System Tray Battery Status Indicators

The System Tray displays icons to show the status of some battery conditions, as shown in [Table 1](#).

**Table 1. System Tray Battery Status Indicators**

Battery Status Icons		
Battery Status	Icon	Description
Backup Battery Low Condition	no icon	The battery status is updated in the control panel, but no icon is displayed.
Backup Battery Very Low Condition		When the backup battery is very low, the system tray contains a very low backup battery CAUTION icon. In addition, a dialog box pops up and alerts you that the backup battery is very low and needs to be charged. The dialog comes up every five minutes until you charge the backup battery.

Battery Status Icons		
Battery Status	Icon	Description
Battery Charging Condition		This icon indicates that the battery pack is currently charging.
Battery Low Condition		This icon indicates that the battery pack is low.
Battery Very Low Condition		When the battery pack is very low, the system tray shows a very low battery CAUTION icon. Also, a dialog box pops up and alerts you to charge the battery pack. A battery warning dialog will pop up every five minutes until you charge the battery.
Battery Power Gauge		The <b>Power</b> control applet displays a battery power gauge. <b>Start &gt; Settings &gt; Control Panel &gt; Power.</b>
Discharged Battery Condition	no icon	<p>When the battery is totally discharged, the battery sensor initiates a shutdown of all applications, and closes the RF Network connection. If the battery pack has completely discharged, when the battery pack is charged or replaced, the unit will resume as before after a cold reset.</p> <p>Refer to Persistent Memory on page 23 regarding the data loss of applications and data stored in RAM.</p>

## Charging the Batteries

There are several methods for charging the battery pack and backup battery. LEDs on the Pegaso, the Single-Slot Dock, and the Four-Slot Battery Charger give visual indication of the charge state. [Table 2 on page 10](#) gives an overview of all the LEDs and what they indicate.

**Table 2. Battery Charging Methods and Indications**

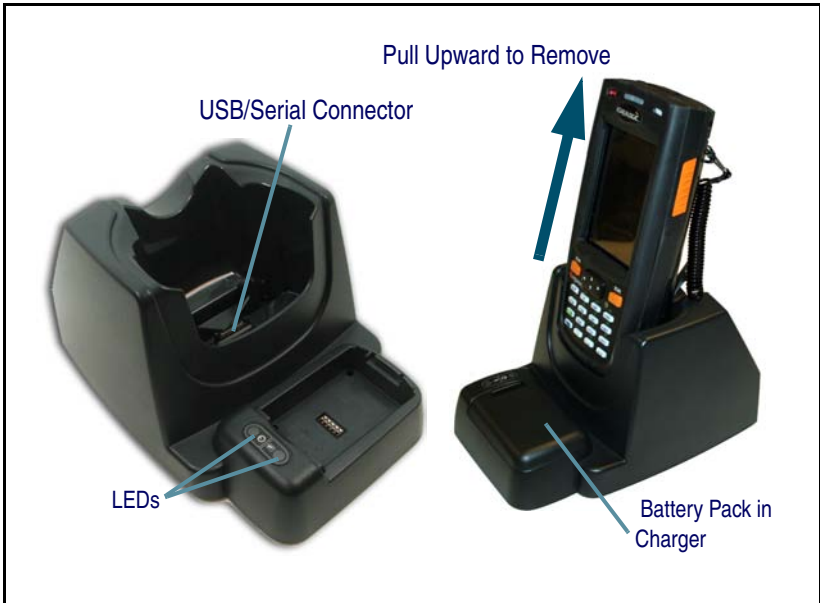
Charging Location:	Pegaso seated in a Dock (Single or Four-Slot)	Pegaso connected to an external power supply	Charging slot of Dock (Single or Four-Slot)	Pegaso Four-Slot Battery Charger
Charging Duration	4-6 hours	4-6 hours	3-5 hours	> 3 hours
Battery Pack Charge Indication:	Charging: RED Fully Charged: GREEN	Charging: RED Fully Charged: GREEN	N/A	N/A
Pegaso Charge LED	Battery above or below allowed charging temperature, or Battery Communication Fault: FLASHING RED	Battery above or below allowed charging temperature, or Battery Communication Fault: FLASHING RED		
Dock or Charger Battery Charge LED(s)	No effect	No effect	Charging: Solid RED Fully charged: GREEN Fault: FLASHING RED	Charging: LEDs are RED Fully charged: Ready LEDs are GREEN Error: AMBER
Simultaneously Charges Backup Battery	YES	YES	N/A	N/A

## Charging with the Dock

A Single-Slot Dock powered by an external power supply (AC adaptor) is available for the Pegaso. Pegasos communicate with the host PC using Microsoft ActiveSync protocol via either a USB or serial port.

Two methods exist for charging a battery pack using a Single-Slot Dock. Refer to [Table 2 on page 10](#). The amber light on the dock will blink when a battery is inserted, to indicate a successful connection. For more information on the Dock, refer to the *PRG*, or the instructions that come with each dock.

**Figure 3. Charging the Battery Pack in a Dock**



Refer to [Table 2 on page 10](#) for a list of LED indicators and their purpose. Refer to the *PRG* for more info on storage and disposal of batteries.

### Charging with a Battery Charger

The Pegaso is available with a Four-Slot Battery Charger. Use the Battery Charger to charge batteries independently of the unit.

**Figure 4. Four-Slot Battery Charger**



### Backup Battery

The rechargeable 3.7V Lithium Backup Battery receives its charge from the Battery Pack. To retain date, time, data, and other settings for the Pegaso, maintain at least a minimal charge on the Battery Pack.

To maximize the backup battery usable life always store the unit with a main battery installed or place the unit in a charging dock when not in use.

When the backup battery is low, an icon will display on the status bar (see [Table 1 on page 8](#)), and a dialog box will open to alert you.

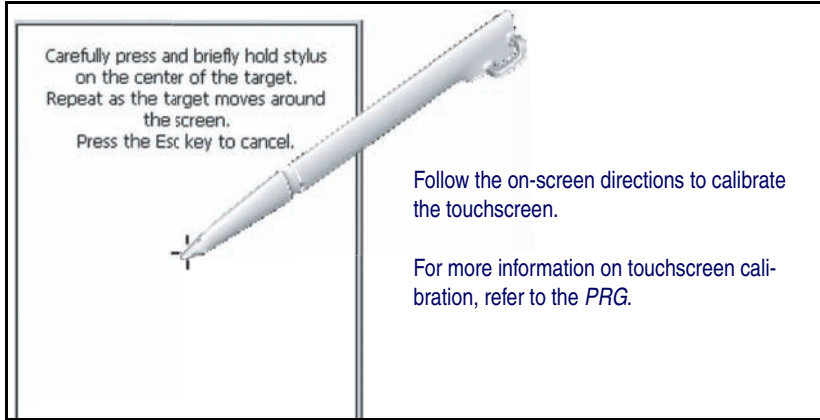
### Setting Up the Mobile Computer

At first use or cold reset, the unit will go through an initial bootup sequence:

1. Touchscreen Calibration on page 13.
2. Getting Connected on page 13.
3. IP Network Setup on page 13.
4. Setting the Date and Time on page 15.

## Touchscreen Calibration

**Figure 5. Touchscreen Calibration**



## Getting Connected

### Bluetooth Setup

1. Open the Bluetooth control panel at **Start > Settings > Control Panel > Bluetooth Manager**.
2. Search for available Bluetooth Devices by tapping the button for the type of device you want (**Printer, Serial or All**) .
3. Create a pairing by double tapping the listing for the device you want and selecting the service. If you want to specify encryption or require authentication, enable the appropriate checkbox.
4. Tap **OK** to complete.

For detailed instructions, reference the *PRG*.

### Connecting to a PC

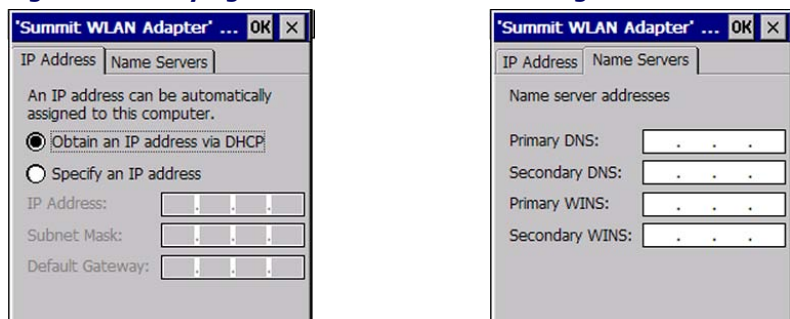
In order for the Pegaso to communicate with a host PC, Microsoft® ActiveSync must be installed on the computer. Go to [www.microsoft.com/downloads/](http://www.microsoft.com/downloads/) for information. Reference the *Pegaso PRG* for detailed instructions.

### IP Network Setup

1. Select **Start > Settings > Network and Dialup Connections**.
2. Double-tap on the item (varies based on the radio installed and the number of connections).

3. Complete the two tabs (shown in [Figure 6](#)):

**Figure 6. Modifying Network Connection Settings.**



- **IP Address:** Select **DHCP** or set static IP settings.
- **Name Servers:** If using static IP, set **DNS** and **WINS** servers.

## RF Setup (Summit Client Utility)

The Summit Client Utility (SCU) is an application designed for users and administrators of mobile devices that use a Summit radio module. Using SCU, you can:

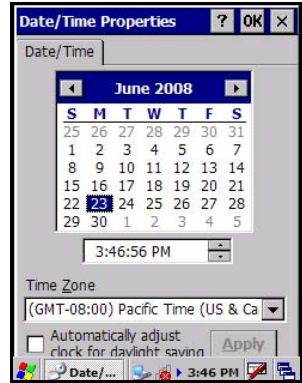
- Disable and enable the radio (turn it off and on)
  - View the contents of configuration profiles, or configs, each of which houses the RF, security, and other settings for the radio
  - Select the config to be used to connect to a WLAN
  - View global settings, which apply to every config
  - View status information on the radio, the access point (AP) or WLAN router to which it is connected, and the RF connection or link between the two
  - Troubleshoot a connection or performance issue, view in-depth diagnostic information on the connection and the radio, and perform various troubleshooting and diagnostic tests
1. To launch the utility go to **Start > Settings > Control Panel**.
  2. Tap on the **Wi-Fi** icon.
  3. To make setting changes tap **Admin Login**.  
The default password is **SUMMIT**.

For more detailed information on making changes to settings, please refer to the *PRG*.



## Setting the Date and Time

1. From the **Start** menu, select **Settings > Control Panel > Date/Time**. Use the arrows to navigate or change the time or date.
2. Change the year by backspacing, or entering a new year.
3. Select the month to open a pull-down list of months.
4. Tap the checkbox to **Automatically adjust clock for daylight savings time**, if desired.



## Using the Stylus



Never use a pen, pencil, or other sharp object on the Pegaso's touchscreen display. Use only the supplied stylus or plastic-tipped pens intended for use with a touch-sensitive display. Contact your reseller to replace a missing stylus.

The stylus is located next to the scanning pod as illustrated in [Figure 7](#). The stylus on the Pegaso is the equivalent of the mouse on a PC. Use the stylus to:

- Navigate the touchscreen display.
- Select characters in the soft input panel (SIP).
- Select applications from the desktop or system tray.
- Select tabs, fields and text within applications and dialog boxes.

**Figure 7. Back View of a Pegaso with a Stylus**



## Ambient Light Sensor

The ambient light sensor is used by the Pegaso to automatically adjust the intensity of the backlight on the display and keypad in response to changes in lighting conditions. It is located on the keypad. Reference the *Pegaso PRG* for information on enabling or disabling this feature.

## Screen Protector

A Screen Protector is available for the Pegaso. Reference the *Pegaso PRG* for information on installation.

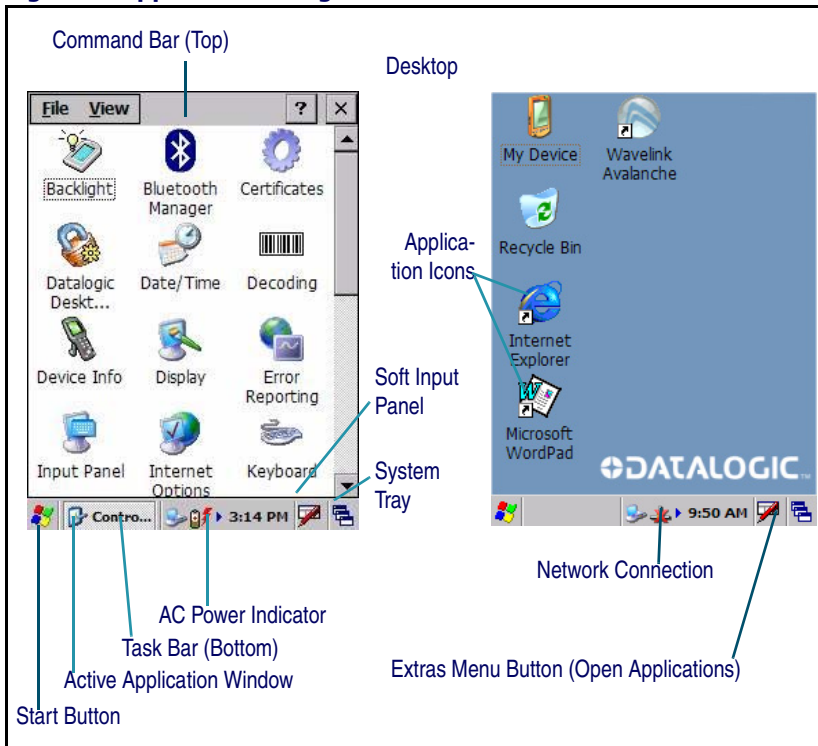
## Navigating the Display

There are several navigation areas on your display, including the command bar, and task bar. Each of these navigation areas have sub-areas of navigation as well. Take the time to familiarize yourself with these features to save yourself valuable time.

## The Command Bar

Use the **Command** bar at the top of the screen to perform tasks in programs, such as opening a file, saving a file, or editing a file. Refer to [Figure 8](#).

**Figure 8. Application Navigation**



## The Task Bar

The **Task** bar at the bottom of the screen displays the start menu icon, an icon for the active program, the current time, and system icons for utilities loaded in memory, including the keyboard icon, which opens and closes the soft input panel (SIP).

**Start Button** — Click the **Start** button to open the **Start** menu. The **Start** menu includes access to **Programs**, **Favorites**, **Documents**, **Settings**, **Help**, and the **Run** command. From **Settings** you can access the **Control Panel**, **Network and Dial-up Connections**, and the **Taskbar and Start Menu**.

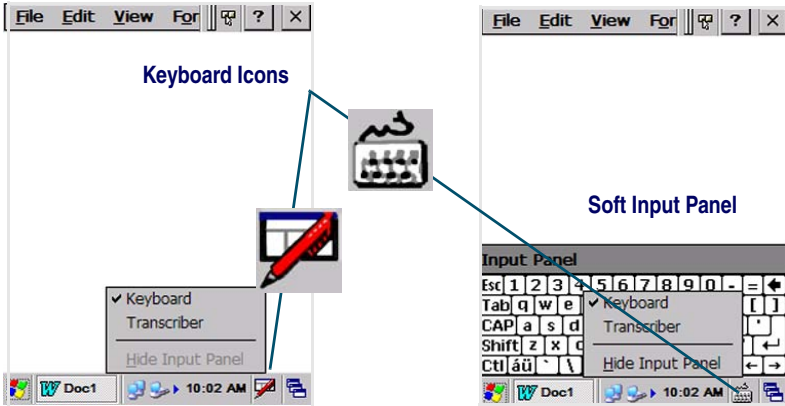
**System Tray** — The **System Tray** contains icons for key presses, utilities and applets running in the background. Click the small arrow(s) in the **System Tray** to view icons for current input mode(s), keypress, power management, and network connections.

**Extras Menu** — Tap **Extras Menu** at the far right of the **Task** bar to select from open applications or to access the desktop while leaving a program open.

## Soft Keypad/Input Panel

In applications that accept keyed input, the soft input panel (**SIP**) can be used to enter data using the stylus. The **SIP** is a digital, QWERTY-style keyboard.

**Figure 9. Soft Input Panel**



**To open the SIP:** — Tap the **Keyboard** icon to open the menu and select **Keyboard** from the pop-up menu to open the keyboard.

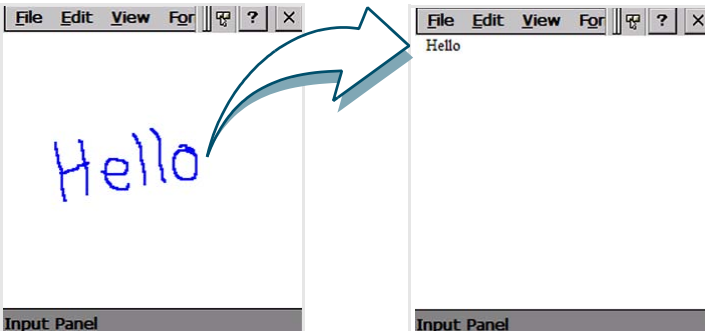
**To close the SIP:** — Tap the **Keyboard** icon to open the menu and select **Hide Input Panel** to close the keyboard.

Use the stylus to select letters, numbers, or symbols from the **Soft Input Panel** for the current application. Tap the **aü** key to show international letters.

## Transcriber

Select Transcriber to provide keyboard input using handwriting and gestures on the touchscreen. You can use the stylus to write words, numbers or symbols directly on the screen, and the result will be sent to the current application. A help screen will appear upon first use.

**Figure 10. Transcriber**



## Keypad

The Pegaso is available with a 19-key keypad. Refer to the *PRG* for information on configuring the keypad.



**Table 3. Keypad Overview - Special Keys**

Key Name	Function/Description
<Alpha>	Press <Alpha> to access upper case alpha characters and symbols on the 19-key keypad.
Numeric Keys	In <b>Normal</b> mode, use the numeric keys to enter numbers. In <b>Alpha</b> mode these keys can be used to type uppercase letters or punctuation.
<Fn>	Press <Fn> to enter the FN input state. Use FN mode to access additional features and operations. A customizable keypad overlay will be available for order, allowing you to remap the Keypad to your specifications.
<Power>	Press <b>Power</b> to put the Pegaso into sleep (suspend) mode if it is currently running, and wake up (resume) the unit if it was in sleep mode. Press and hold it briefly to turn off the unit.
<Scan>	Press <Scan> to activate the laser scanner.
4-Way Rocker Key	Press the edge of the 4-way rocker key to move the cursor or highlighted text entry during a menu/list selection. In a text window: The <Up> arrow moves the cursor <b>up</b> one line. The <Right> arrow moves the cursor to the <b>right</b> one character. The <Down> arrow moves the cursor <b>down</b> one line. The <Left> arrow moves the cursor to the <b>left</b> one character.
<Send/End>	Used to initiate or end <b>VOIP</b> when <b>VOIP</b> software is installed.

## System Tray Keyboard Indicators

The System Tray Keyboard Indicators are located at the bottom of the display. The most recently activated state is to the left if more than one state is active. Scroll between icons to view the active modes.

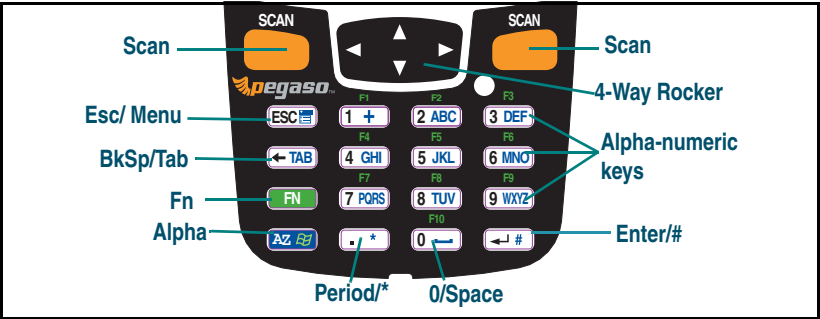
**Table 4. Input States and their System Tray Indicators**

Icon	State	Function
	Alpha Mode	Press <Alpha> to enter uppercase alpha characters and symbols. When in Alpha mode, the current alpha character is displayed by a system tray keyboard indicator. Alpha mode is persistent, which means that the system stays in Alpha mode until you press <Alpha> again.
	Fn Mode	Press <Fn> to enter FN mode. <Fn> is independent of the <Alpha> key. Use FN mode to access the features and operations on the keypad.

19-Key Keypad

The Pegaso keypad is organized like a cell phone, with multi-tap access to uppercase alpha characters on numeric keys (see [Figure 11](#)). Use the alpha-numeric keys and the <ESC> key to type letters, numbers, and symbols listed in [Table 5](#) on page 20.

Figure 11. Pegaso Keypad



**Key Functions** — Most of the keys on the keypad of the Pegaso have more than one function. To access the secondary features and functions, you must first press another key to obtain the desired input state.

**Numeric Keys** — Press the keys in [Table 5](#) once, twice, or more to cycle through the alpha letters and symbols until the desired character appears in the system tray. After the last character in the sequence for that key, the next key-press will generate the first letter or symbol in the sequence.

Table 5. 19-Key Keypad Alpha Characters and Symbols

Normal Mode	Alpha Mode				
Key	First Keypress	Second Keypress	Third Keypress	Fourth Keypress	Fifth Keypress
<ESC>	:	/	@	:	/
<1>	,	\	*	,	\
<2>	A	B	C	A	B
<3>	D	E	F	D	E
<4>	G	H	I	G	H
<5>	J	K	L	J	K
<6>	M	N	O	M	N
<7>	P	Q	R	S	P
<8>	T	U	V	T	U
<9>	W	X	Y	Z	W

**Table 6. 19-Key Keypad**

	Normal	Fn	Alpha	Fn + Alpha
<b>1</b>	1	F1	+	F1
<b>2</b>	2	F2	abc	F2
<b>3</b>	3	F3	def	F3
<b>4</b>	4	F4	ghi	F4
<b>5</b>	5	F5	jkl	F5
<b>6</b>	6	F6	mno	F6
<b>7</b>	7	F7	pqrs	F7
<b>8</b>	8	F8	tuv	F8
<b>9</b>	9	F9	wxyz	F9
<b>0</b>	0	F10	Space	F10
<b>Period</b>	Period	F11	*	F11
<b>Enter</b>	Enter	F12	#	F12
<b>Bksp</b>	Bksp	Del	Tab	Del
<b>Esc</b>	Esc	Pause	Menu	Pause
<b>Up</b>	Up	PgUp	Up	PgUp
<b>Down</b>	Down	PgDn	Down	PgDn
<b>Left</b>	Left	Home	Left	Home
<b>Right</b>	Right	End	Right	End
<b>Alpha</b>	Alpha	Start	Alpha	Start
The FN+ALPHA state defaults to equivalent operation as the FN state.				

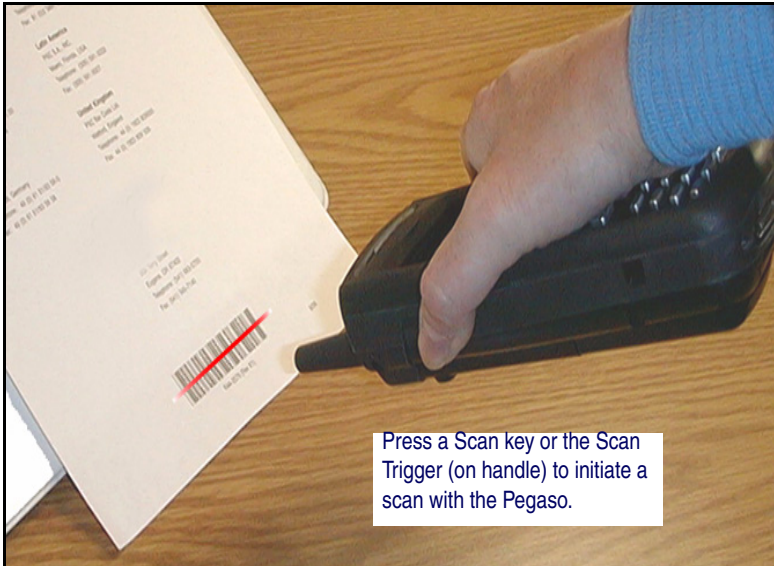
## Scanning Bar Codes

### Laser Scanning

To use the scanning function on units containing a laser scanning module, complete the following steps:

1. Select and open a data capture application, such as Microsoft® WordPad.

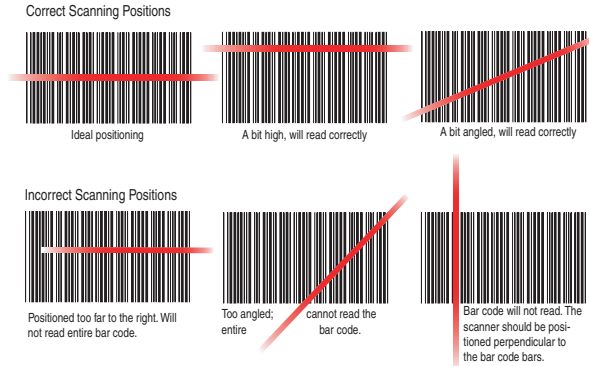
**Figure 12. Scanning a Bar Code**



Press a Scan key or the Scan Trigger (on handle) to initiate a scan with the Pegaso.

2. Aim the scan window at the bar code as shown in [Figure 12](#).
3. Press the **<Scan>** key or trigger. The laser scans as long as you hold the button or trigger, or for 10 seconds, or until a good scan is obtained.
4. Aim the laser beam at the center of the bar code.
  - Position the unit close to bar code when scanning small bar codes.
  - Position it at a distance when scanning larger bar codes.
  - The laser is disabled after you release the key or after 10 seconds, or once a good scan is obtained.



**Figure 13. Laser Beam Positions**

5. The device beeps and the green LED indicator comes on until the trigger is released. The green LED and the beep tone indicate a good read.



If the bar code scan failed, adjust the reading angle or distance. Make sure that the laser beam scans across all bars of the bar code. Refer to Figure 13.

6. The bar code data is entered in the current application.
7. Once a bar code is read successfully, the scanner turns off automatically.

Refer to Scanner Configuration in the *PRG* to modify the default settings.

## Persistent Memory

In addition to the RAM-based storage standard on Windows CE terminals, the Pegaso is equipped with persistent memory flash application and file storage area. Refer to the *PRG* for more information.



The persistent storage memory persists across warm or cold reset conditions and software / firmware updates.

Because of this, Datalogic very strongly recommends installing all applications, applets, programs, and important data files to the persistent disk of the Pegaso.



If an application or a data file is only installed or saved in RAM, a hard reset may result in the loss of that application or data file.

## Context Sensitive Help

Microsoft Windows CE context sensitive help is available wherever “?” appears in the upper right hand corner of the window. Press “?” to open the context help window. Select/tap the desired item from the list of hot links.

## Resetting the Pegaso

There are several reset methods for the Pegaso.

- A warm reset terminates an unresponsive application and clears the working RAM, but preserves the file system.
- A cold reset forces all applications to close and clears working RAM and files not resident on the persistent flash memory.
- A Safe Reset restores the Pegaso to factory configuration.



### CAUTION

Datalogic recommends that you always attempt a warm reset before initiating a cold reset. Once you initiate a cold reset, all applications are forcibly closed and working RAM and files are cleared.

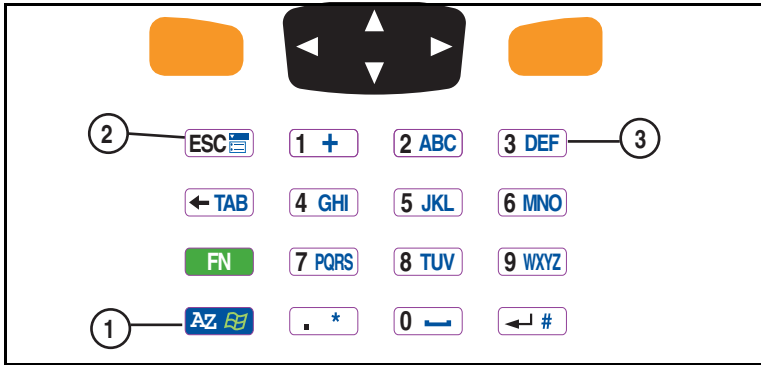
It is a good idea to store important data in flash (persistent) storage for this reason. Refer to Persistent Memory on page 23. More information can be found in the *Pegaso PRG*.

## Warm Reset

A warm reset is a transition from the on or idle condition that closes all applications, clears the working RAM, but preserves the file system. If an application “hangs,” initiate a warm reset to terminate the application.

**Procedure to Warm Reset** — Press the three keys in the sequence shown. All three keys must be held down for the unit to reset. Refer to [Figure 14](#) for the location of the reset keys.

**19-Key Pegaso** — Press and hold: <AZ>+<ESC>+<3>.

**Figure 14. Warm Reset**

## After Warm Reset

- The splash screen will appear briefly.
- The desktop appears with the application shortcuts on the screen.
- The RF Network PC Card (if present) connects to the network system.



The custom settings in the registry are persistent.

## Cold Reset

A cold reset is a complete reset of the Pegaso in which all applications are forcibly closed and working RAM is cleared.



### CAUTION

Datalogic recommends that you always attempt a warm reset before initiating a cold reset. Once you initiate a cold reset, all applications are forcibly closed and working RAM and files are cleared.

Any applications, files, or data in RAM will be lost on cold reset. Only applications and files in persistent memory are preserved. Refer to Persistent Memory on page 23 for information on preserving applications and files with persistent flash storage memory.

**Reason to Cold Reset** — Use a cold reset when the Windows CE operating system locks up and the warm reset command does not work.

**Procedure to Cold Reset** — To perform a cold reset, remove the Battery Pack and use the Stylus to press the <Reset> button inside the Battery Compartment, shown in Figure 15. Reinstall the Battery Pack, and press the <Power> button.

**Figure 15. Cold Reset**



### After Cold Reset

Cold reset clears the working RAM and initializes the file system. You will lose any applications and data which are not stored in persistent flash memory (refer to the *PRG* for more information).

- The splash screen will appear after a short period.
- Recalibrate the touch screen.
- The desktop appears with the application shortcuts on the screen.
- RF Network PC Card (if present) connects to the network system.



The custom settings in the registry are persistent.

### Safe Reset

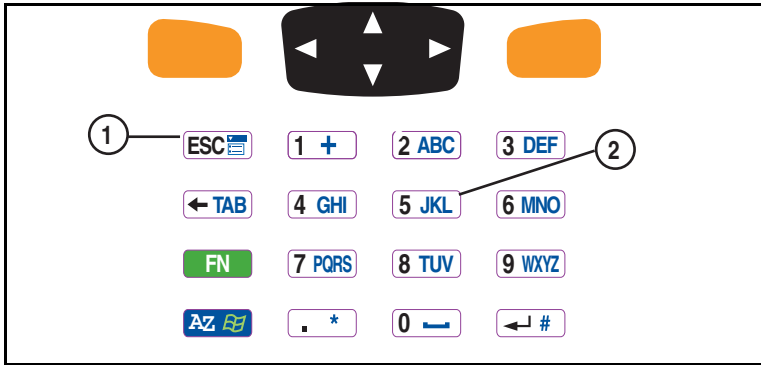
A safe reset is a system reset that causes the device to be restored to factory configuration.

#### Procedure to Safe Reset

After a Warm or Cold Reset when the splash screen is present, press and hold the keys specified below. Press the two keys in the sequence shown. Both keys must be held down for the unit to reset. Refer to [Figure 16](#) for the location of the safe reset keys.

You will be asked for confirmation of whether you want to perform a safe reset. Press **Enter** to confirm or **ESC** to cancel.

**19-Key Pegaso** — Press and hold: **<ESC>+<5>**.

**Figure 16. Safe Reset**

## After Safe Reset

- The persistent registry is not restored
- Persistent registry files are renamed so they will not be used to restore the registry on future resets
- Items in the Startup folder will not run
- The Pegaso will be reset to its factory configuration

## Maintaining the Pegaso

With normal use, the Pegaso, Dock, and Four-Slot Battery Charger require no maintenance. For trouble-free service, observe the following tips:

- To prolong its life and avoid problems, keep the Pegaso clean. Use a clean, soft cloth dampened with a mild, dilute cleanser.
- Clean the display with a lens cloth or other soft cloth dampened with a mild, dilute cleaning solution.



### CAUTION

Never use a pen, pencil, or other sharp object on the display/touch screen. Use only the supplied stylus or plastic-tipped pens intended for use with a touch-sensitive screen.

Do not immerse the Pegaso, dock, or battery charger in liquid.

Do not use abrasive paper/cloth or abrasive/corrosive cleaners to clean the unit.



### WARNING

Do not use a sharp object to **Reset**; use the Stylus. A sharp object can puncture the button, disabling the reset function, rupturing the industrial seal, and voiding your warranty. Refer to Resetting the Pegaso on page 2-24

# Troubleshooting

Refer to the *Pegaso PRG* for more information.

**Table 7. Troubleshooting Problems, Causes, and Solutions**

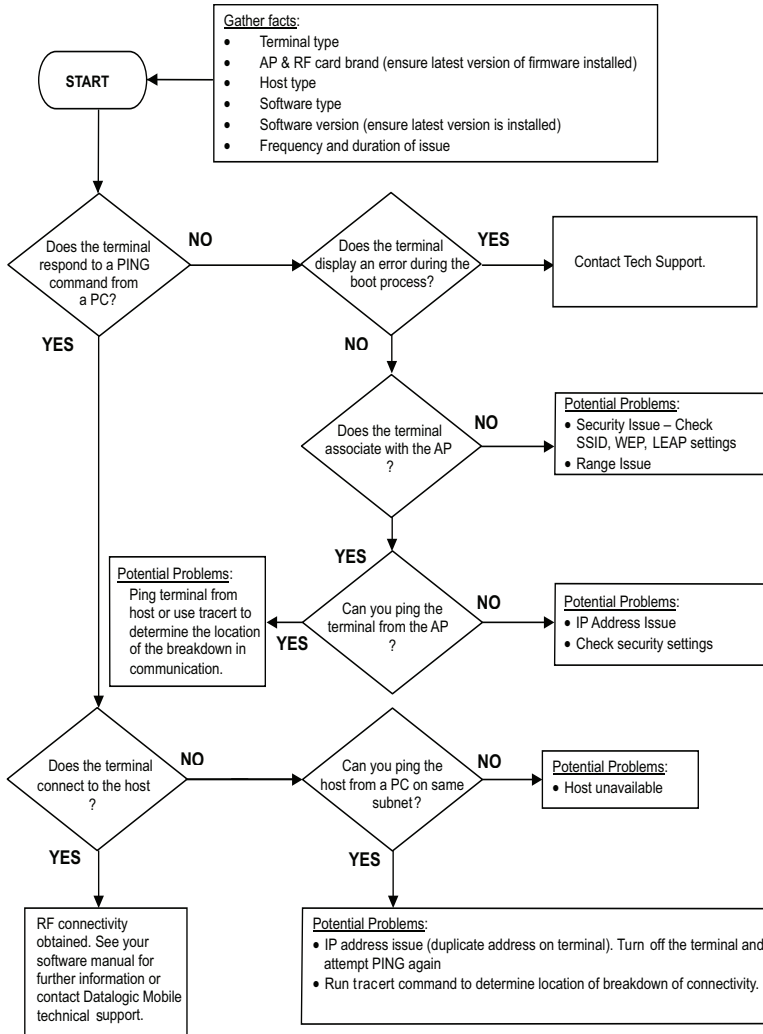
Problem	Possible Cause	Solution
<b>The Pegaso does not turn on.</b>	The battery pack is not installed properly.	Ensure the battery is installed properly.
	System failure.	Perform a cold reset. Refer to <a href="#">Resetting the Pegaso</a> on page 2-24.
<b>During reset, the terminal beeps twice and stays blank.</b>	Firmware persistent flash memory has been corrupted.	Re-download the firmware using the DFU in bootloader mode. Refer to the <i>PRG</i> .
<b>Rechargeable battery pack did not charge.</b>	Battery failure.	Replace the battery. If the terminal still does not work, do a warm reset, then a cold reset; refer to <a href="#">Resetting the Pegaso</a> on page 2-24.
	The unit was removed from the dock while battery was charging.	Insert the Pegaso in dock and begin charging. The battery pack and backup battery require 4 hours to fully charge.
<b>Characters are not visible on the display.</b>	The Pegaso is not powered on.	Press <b>&lt;PWR&gt;</b> .
	The ambient room light is too dark or low.	The Ambient Light Sensor may not be functioning properly.
<b>No sound is audible.</b>	Volume setting is low or turned off.	Adjust the sound by going to <b>Start &gt; Settings &gt; Control Panel &gt; Volume &amp; Sounds</b> --OR-- Scan a bar code from the <i>PRG</i> .
<b>The Pegaso turns itself off.</b>	The Pegaso is inactive.	The Pegaso turns off after a period of inactivity. You can set duration from 1-30 minutes. Refer to the <i>PRG</i> .
<b>During data communication, no data was transmitted, or transmitted data was incomplete.</b>	The Pegaso was removed from dock or unplugged from host PC during communications.	Replace the terminal in the dock or replace the serial cable, and retransmit.
	Incorrect cable configuration.	See your System Administrator.
	Communication software was incorrectly installed or configured.	Perform setup as described in the <i>PRG</i> .

Problem	Possible Cause	Solution
<b>The Pegaso does not accept scan input.</b>	The scan window is dirty.	Carefully wipe the scanning window with a soft, clean cloth. Do not use abrasives.
	The scanning application is not loaded.	Verify unit is loaded with a scanning application. See your System Administrator.
	Unreadable bar code.	Be sure the symbol is not defaced.
	Distance from scan window to bar code is incorrect.	Be sure you are in proper scanning range.
	The Pegaso is not programmed for a symbology.	Be sure the terminal is programmed to accept the type of bar code you are scanning. Try using FF3A to turn on maximum defaults, as described in “Programming Parameters” in the <i>PRG</i> .
<b>The Pegaso does not accept scan input (cont.)</b>	The Pegaso is not programmed to generate a beep.	If you don’t hear a beep, check that the application is set to generate a beep on good decode.
	Battery is low.	If the scanner stops emitting a laser beam when you press the trigger, check your battery level. Refer to the <i>PRG</i> . <b>Note: If the scanner is still not reading symbols, contact your distributor or Datalogic Mobile, Inc.</b>
<b>The UPC/EAN extension (supplemental label) is not always scanned.</b>	Laser beam only crosses over base of UPC/EAN label.	Set the <b>Read Verification</b> for extensions (parameter 0528) to a value lower than the <b>Read Verification</b> for the base label. See the <i>PRG</i> .

Problem	Possible Cause	Solution
<b>The Spare Battery LED on the dock is flashing RED.</b>	Time-out fault: the spare battery pack charging has exceeded the maximum time-out period.	<p>In either case, if the Spare Battery LED is flashing red, do the following:</p> <ol style="list-style-type: none"><li>1. Disconnect the AC adapter from the dock.</li><li>2. Remove the spare battery pack and the Pegaso from the dock.</li><li>3. Connect the AC adapter to the dock.</li><li>4. If the Spare Battery LED is flashing red, there is a problem with the dock. Disconnect the AC adapter from the dock and contact a service technician.</li><li>5. If the Spare Battery LED is off, insert a different spare battery pack in the dock.</li><li>6. Otherwise, there is a problem with the first spare battery pack. Discontinue use of the first spare battery pack. Refer to the <i>PRG</i> for instructions on battery disposal.</li></ol>
	Over-voltage fault: the spare battery pack charging has exceeded the maximum charge voltage of the battery.	



# RF Connectivity Troubleshooting



(For more information on the Ping command, go to the command prompt on the PC and type PING. For more information on the trace route command, go to the command prompt on the PC and type tracer.)

## Technical Support

### Datalogic Mobile Website Support

The Datalogic Mobile website ([www.mobile.datalogic.com](http://www.mobile.datalogic.com)) is the complete source for technical support and information for Datalogic products. The site offers product support, warranty information, product manuals, product tech notes, software updates, demos, and instructions for returning products for repair.

### Reseller Technical Support

An excellent source for technical assistance and information is an authorized Datalogic reseller. A reseller is acquainted with specific types of businesses, application software, and computer systems and can provide individualized assistance.

### Telephone Technical Support

If you do not have internet or email access, you may contact Datalogic technical support at (541) 743-4802.

## Resources

Check the Datalogic Mobile website at [www.mobile.datalogic.com](http://www.mobile.datalogic.com) for the latest updates for manuals, software and information about your product.

# Wavelink

## Avalanche SE™

### Quick Start

As part of your recent Datalogic mobile device purchase, Datalogic is providing the pre-licensed software, Avalanche Site Edition™ (SE) from their partner, Wavelink® Corporation. Avalanche SE is a client management system designed to easily manage software and configuration updates to mobile devices.

This document provides a brief overview of the core tasks needed to connect Avalanche SE to your mobile devices. For detailed information about each of these steps and additional tasks, refer to the *Avalanche SE User Guide* or the help file included in the product.

Wavelink software brings a high level of flexibility and breadth of enterprise integration options. Add the power of Wavelink Terminal Emulation™ with Wavelink Speakeasy™ technology, voice-enabled emulation, Industrial Browser, a robust browser for web-based applications and Studio, create and deploy powerful server-side enterprise wireless applications. Control your wireless ecosystem with the leading enterprise management system, Avalanche Mobility Center. Empower your enterprise further with enhanced plug-ins, CE Secure, advanced device security, Certificate Manager, network authentication with unique digital certificates, and Remote Control, the ability to remotely diagnose and remedy devices. It is easy to install, configure, and control any of the available plug-ins. For more information on the Wavelink plug-ins, please review the enclosed CD or visit [www.wavelink.com](http://www.wavelink.com).

### Install Avalanche SE

1. **Review system requirements.** Before installing Avalanche SE, review all system requirements and ensure you have the applicable system access privileges for your server or PC.

**Table 1. Installation Requirements**

<b>OS</b>	Windows 2000 Server (SP 4), Windows 2000 Professional (SP 4), Windows 2003 Server (SP 2 or later), Windows XP (SP 2 or later)
<b>Processor</b>	Intel Pentium 4 Processor at 2.8 GHz (or equivalent)

<b>Hard Drive</b>	5 GB for console  10 GB for server
<b>RAM</b>	1 GB for console and server
<b>MISC</b>	Administrator login rights  Partition/Disk NTFS file system  JSE Runtime Environment 5.0 (automatically installed by the Avalanche installer if not already on your system)  Shared file folder on the host system where the administrator has full control.  Administrative rights on the system.
<b>RAPI</b>	Active Sync 3.7.1 or 3.8  ActiveSync support connection

2. **Install.** Download the Avalanche SE install from the enclosed CD or via the Wavelink web site at [www.wavelink.com/datalogic](http://www.wavelink.com/datalogic). Follow the prompts in the Install WIZard to complete the installation. Avalanche SE automatically installs a Mobile Device Server on the local machine. The Mobile Device Server is server software that facilitates management and configuration of your mobile devices.



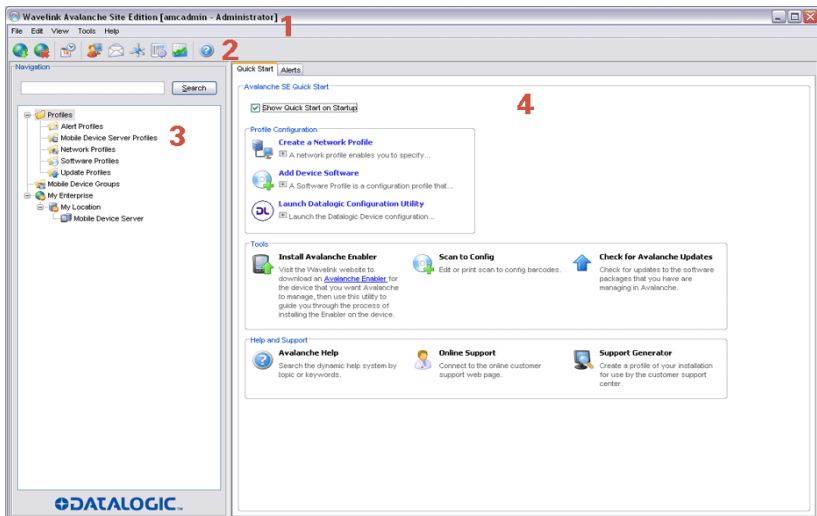
If the telnet CAB file gets deleted from the flash disk, you can download the latest file from [www.wavelink.com](http://www.wavelink.com).

3. **License your devices.** Datalogic devices purchased include a license for Avalanche SE. Licenses for devices purchased before this may be obtained through your local reseller. For information about adding additional licenses, refer to chapter two in the *Avalanche SE User Guide*.
4. **Install the Reporting Tool.** The Avalanche SE Reporting Tool is a separate installation. You can download the installation from the Wavelink web site or contact Customer Service for more details. Installing the Reporting Tool is optional.
5. **Register for Maintenance.** Avalanche SE comes with one year of free maintenance. Maintenance includes the highest level of quality in technical support and customer service from Wavelink's experience technical support representatives. To receive maintenance you must register

either by completing the Maintenance Registration Form on the enclosed CD or via the Wavelink web site at [www.wavelink.com/dlregister](http://www.wavelink.com/dlregister).

## Access the Avalanche SE Console

**Launch the console.** Once Avalanche SE is installed, select **Start > Programs > Wavelink Avalanche > Avalanche Console**. Use the default user login **amcad-min** and password **admin** to login. Once the console contacts the server, the Avalanche SE console appears. The console provides the administrative interface that allows you to configure and control your mobile devices. The following information is intended to orient you with the different sections of the console and provide a brief description of some of the elements.



**Section 1: Menu bar.** The Menu bar provides access to the **File**, **Edit**, **View**, **Tools** and **Help** menus.

**Section 2: Tool bar.** The Tool bar provides access to SE components, such as the **Task Scheduler**, **User Management**, **Scan to Configure**, **Contact Manager** and the **Reporting Tool**.

**Section 3: Navigation Window.** The Navigation Window is a repository for profiles that may be configured and applied to your mobile devices. Profiles determine all aspects of device configuration, such as device network connectivity and software load. The Navigation Window also provides the My Enterprise view, which is a folder containing the mobile devices.

**Section 4: Main body of the console.** The view in this area changes based on what object you select in the Navigation Window. It can display information including profile configuration, mobile device inventory, the **Quick Start** tab and the **Alerts** tab.

## Additional Console Information

**User Permissions.** Upon installation of Avalanche SE, an Administrator account is created automatically which allows you to log on to the console and then create new Administrator or Normal user accounts. These user accounts specify components that are restricted or available to the user. To access any area of the console, to make changes or to view configured profiles, you must have the correct permissions assigned to your user name. You can access the User Management utility by selecting **Tools > User Management**.

**Edit Mode.** If you have the correct user permissions to manage profiles or server properties, you must enter edit mode anytime you want to modify those components. To use edit mode, you employ the Edit, Save and Cancel buttons located at the top of each profile tab. If you do not have permissions for a certain profile, the Edit button will not be active.

## Connect To Your Mobile Devices

To connect to Avalanche SE, your mobile devices must have an Avalanche Enabler (Client) installed. The Enabler allows Avalanche SE to manage the mobile device. The following devices are pre-installed and pre-licensed with the Enabler: Memor, Skorpion, Falcon 4400, Kyman, Pegaso, Datalogic JET, and Rhino.

If you have a device that does not have a pre-installed Enabler on it, download the installation package from the Wavelink web site ([www.wavelink.com/datalogic](http://www.wavelink.com/datalogic)) or contact Customer Service.

Assuming you have an Enabler on your device, you can connect to Avalanche SE using one of the following methods:

- **Broadcast.** If your mobile device is associated on the network, the device will attempt to connect to the Mobile Device Server on the local subnet automatically each time the Avalanche Enabler is activated (typically on reboot or Enabler start-up).
- **Update the Server Address on the Enabler.** If the mobile device is not on the same subnet as the Mobile Device Server, you can manually enter the IP address of the server on the Enabler, forcing the Enabler to contact the server and receive updates.
- **Scan to Configure.** You can use the Scan to Configure utility in Avalanche SE to create barcode profiles that are generated from a network

profile. You can then print the profiles as barcodes and scan them using the Scan to Config option in the Enabler File menu. The network information from the scanned barcodes is stored in the Avalanche profile on the Enabler. For information about creating barcode profiles, refer to the *Avalanche SE User Guide*.

- **Cradle the mobile device.** If the mobile device is not associated with your network, place the mobile device in its cradle and connect to the Mobile Device Server using ActiveSync. If you have entered the Mobile Device Server IP address on the Enabler, you can use any PC on your network. If you have not entered the address, the cradle and ActiveSync must be connected to the machine where the Avalanche SE server is installed.

Once the mobile device connects it will appear in the **Mobile Device Inventory** tab. By configuring the profiles, you can update the mobile device with network settings, software packages and other configurations.

## Manage Mobile Devices

The **Mobile Device Inventory** tab provides a list of all devices that have been in contact with Avalanche SE. From this tab, you can:

1. **View Mobile Device Details.** Right-click any device and select **Mobile Device Details** to view the *Mobile Device Details* dialog box which provides device-specific information and options to control your mobile device.
2. **Configure Mobile Device Properties.** Mobile device properties consist of pre-defined and user-defined properties. User-defined properties can be associated with individual mobile devices or with mobile device groups. Pre-defined properties are device-specific and dependent on the version of the Avalanche Enabler running on the mobile device. Properties can be used for selection criteria in addition to the selection variables.
3. **Control the Mobile Device.** Control your devices in the following ways:
  - Ping your devices. You can ping clients that are currently in range and running the Avalanche Enabler.
  - Send text messages. You can send a text-based message to clients that are currently in range and running the Avalanche Enabler,

- Update the device with the latest changes. You can perform individual updates to clients that are currently in range and running the Avalanche Enabler or an Avalanche-enabled application. The rules that govern which mobile devices can receive a particular update are determined by the selection criteria.
- Connect through RAPI gateways. You can use Microsoft ActiveSync connections that exist on the system that hosts the Mobile Device Server. Avalanche SE can automatically detect these connections and create a gateway that allows you to use the connection to facilitate communication between the Mobile Device Server and a mobile device.

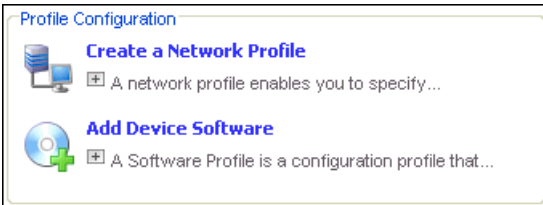
## Additional Functionality

- Connect to mobile devices using Remote Control. Refer to [Connect to Devices Using Remote Control on page 40](#).
- Launch Session Monitor. Session Monitor allows you to view the Telnet Client on a mobile device from the Avalanche SE console. To use the Session Monitor, you must have Telnet Client 5.x or later installed on the mobile device. For more information, refer to the *Wavelink Telnet Client User Guide* on the enclosed CD or at the Wavelink web site ([www.wavelink.com/datalogic](http://www.wavelink.com/datalogic)).

## Configure Network and Wireless Settings

A network profile allows you to control network and wireless settings for all devices meeting its selection criteria.

1. **Create a Network Profile.** From the [Quick Start](#) tab, select **Create a Network Profile**. Use the options in the **Network Profile** tab to create and configure a new network profile.



2. **Configure Selection Criteria.** Define the selection criteria to control the distribution of the profile.
3. **Configure General Settings.** After creating a network profile, access the **General Settings** tab by selecting the network profile and clicking the **Edit** button. From **General Settings** tab you can enable the profile



and configure IP Pools. You can also select whether you want the profile to manage the network and wireless settings and override any manual settings on the mobile device.

4. **Configure the network settings.** If you select to manage the network and/or wireless settings with the network profile, you can define when network and wireless settings take effect on the mobile devices.
  - **Network Settings tab.** Configure basic network settings, including the Mobile Device network settings (Server and Gateway addresses, DNS). You can select the method by which mobile devices receive their IP address assignments (manual, IP pools or DHCP).
  - **Wireless Settings tab.** Configure SSID, the type of encryption and additional authentication settings (based on the type of encryption you select).

The screenshot shows the 'Network Settings' tab with the 'Mobile Device Settings' section expanded. It contains the following fields:

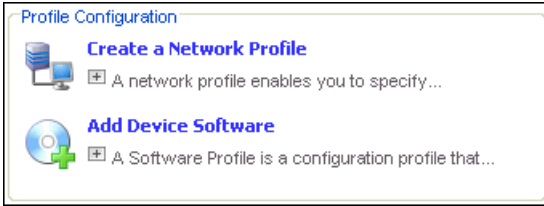
- ☐ Server Address: 0 . 0 . 0 . 0 ☐ Use Location Value
- ☐ Gateway Address: 0 . 0 . 0 . 0 ☐ Use Location Value
- ☐ Subnet Mask: 0 . 0 . 0 . 0 ☐ Use Location Value
- ☐ Domain Name System (DNS)
  - Domain Name: [Empty text field]
  - Primary DNS: 0 . 0 . 0 . 0
  - Secondary DNS: 0 . 0 . 0 . 0
  - Tertiary DNS: 0 . 0 . 0 . 0

5. **Save your changes and update devices.** Click the **Save** button to save your network profile settings. The profile is automatically applied to My Enterprise and will update any mobile devices the next time the devices check in.

## Install Additional Software Packages

Using software profiles, you can manage one or more software packages that will be installed on mobile devices whose device properties meet the selection criteria of the profile and packages. When a mobile device, with properties that match the selection criteria, connects to the Mobile Device Server, the server will download the software package(s) to the device. If no activation time is set, the package(s) will be installed immediately. If an activation time is set, the package(s) will be installed at the specified time.

1. **Create a software profile.** You can create a new software profile or simply modify the default. The default software profile contains the Remote Control software package. If you want to create a new profile, select **Add Device Software** from the **Quick Start** tab.



2. **Configure selection criteria.** Define the selection criteria to ensure limited distribution of the profile.
3. **Install or build a software package.** Once you create a software profile, you can then install software packages to that profile. Through the software profile you can configure the software package settings.

General Settings   Applied To   Authorized Users   Selection Criteria   <b>Software Packages</b>						
	Name	Status	Type	Version	Title	Vendor
	VLMRTCTL	Disabled	Auto Run	3.0.017	Wavelink Remote Control	Wavelink
	AvaCfgCE	Disabled	Auto Run	4_04_06	Windows Enabler Configur...	Wavelink Corp
	CESecure	Disabled	Auto Run	1.1.2	CESecure	Wavelink

Buttons: Add Package, Configure, Enable, Remove



**Software package configuration options are based on the package and package type, as not all software packages include configuration tools.**

4. **Configure package activation time and package distribution options.** This step is optional.
5. **Save your changes.** The profile is automatically applied to My Enterprise and will update any mobile devices, with device properties that match the selection criteria of the profile and the package, the next time the devices check in.

## Connect to Devices Using Remote Control

Avalanche Remote Control is a software plug-in that allows you to remotely connect to a mobile device. Using Remote Control you can diagnose and repair both applications and device settings. Remote Control can also be used for presenting software to an audience, rapid data entry and automated software testing.

The Remote Control software package is installed in the default software profile. You can launch the Remote Control console to configure the method by which you want to connect to your mobile devices.

1. **Obtain Remote Control licenses.** Remote Control licenses are on a per-device basis. You must have one license for each mobile device to which you want to connect. If you have not yet purchased a license, Remote Control provides the option of using a 30-day trial license. Contact Customer Service for information about purchasing and obtaining the licenses needed to manage your devices.
2. **Activate Remote Control.** Access the *Wavelink Activation* dialog box and select Remote Control from the Product drop-down menu. Select the Demo button to create a one-time 30 day trial license, or if you have purchased a Remote Control license, browse to the location of your license file.
3. **Configure selection criteria.** Configure the selection criteria for the default software profile (which contains the Remote Control package) to control the package distribution.
4. **Launch the Remote Control console.** Select the Remote Control package and click Configure. In the dialog box that appears, enter the server address and port number of the Remote Control Server and click OK. You will only need to enter the address once. Once Avalanche SE and connect to the Remote Control Server, the Remote Control console launches.



From the Remote Control console you can configure additional client and server connection settings. However, once you have entered the server address, you will be able to connect to your mobile devices.

5. **Enable the Remote Control package and the software profile that contains the package.**
6. **Update your mobile devices.** Once enabled, the client portion of Remote Control will download the software profile to any mobile devices that are currently in range, running the Avalanche Enabler and whose properties match the selection criteria on the Remote Control package and the software profile.
7. **Connect to a mobile device.** Once your mobile device has downloaded the Remote Control client, you can create a Remote Control connection session. A connection session is created when Remote Control successfully connects to the mobile device, allowing you to view and control actions on the device. In the Mobile Device Inventory tab, right-click the mobile device to which you want to connect. In the *Mobile Device Details* dialog box, select the Device Control tab. Double-click the

Remote Control icon to connect to the mobile device. The connection session will begin and the mobile device will display on your machine.

8. **Use Remote Control.** Click within the Remote Control connection window to send the mouse click to the connected device. Type on your physical keyboard to send the key commands to the mobile device.



**Full descriptions of Remote Control configuration and tasks are available in the *Avalanche Remote Control User Guide* or in the online help included with the product.**

## Additional Resources

The following is a list of the documents and resources available for Avalanche SE. Documents can be downloaded from the Wavelink web site. All online help files are included in the products.

- Avalanche SE User Guide
- Avalanche Remote Control User Guide
- Avalanche SE Licensing document
- Avalanche SE Services document
- Avalanche SE Ports document
- Migrating from Avalanche 3.6.3 to Avalanche SE document
- Avalanche SE online help file
- Avalanche Remote Control online help file

# Datalogic Mobile Pegaso™ Windows® CE End User License Agreement

Notice to End User: The Datalogic Product you have acquired contains Software, which is integral to the product's operation. This Software is being provided to you under license, subject to the terms and conditions of this Agreement. If you use the Datalogic Product, you will be deemed to have accepted the terms and conditions of this Agreement. If you do not intend to be bound to the terms of this Agreement, Datalogic is not willing to license the Software to you, you may not use the Datalogic Product or the Software, and you must contact the party from whom you acquired the Datalogic Product for instructions.

This End User Software License Agreement ("Agreement") is a legally binding agreement governing the licensing of the Software and Documentation by Datalogic Mobile, Inc. and its wholly owned subsidiaries and affiliates ("Datalogic") to the entity or person who has purchased or otherwise acquired a Datalogic Product ("End User"). For purposes of this Agreement, any software that is associated with a separate end-user license agreement is licensed to you under the terms of that license agreement. Datalogic and End User hereby agree as follows:

## 1. Definitions.

1.1 "Documentation" means materials such as user's guides, program reference guides, quick reference guides, manuals, or similar materials associated with or related to the Datalogic Product, whether in printed, "online", or other form.

1.2 "Proprietary Information" means: (a) source code, object code, software, documentation, and any related internal design, system design, data base design, algorithms, technology, technical data or information, implementation techniques, and trade secrets related to the Software, (b) any other trade secrets marked appropriately or identified as proprietary or confidential, and (c) any information that End User, under the circumstances, should recognize as confidential. Proprietary Information does not include any information that the receiving party can establish was (1) in the public domain, (2) already in the receiving party's possession or rightfully known prior to receipt, (3) rightfully learned from a third party not in violation of any other's proprietary rights, or (4) independently developed without access to Proprietary Information.

1.3 "Datalogic Product" means Datalogic Mobile's Pegaso Windows® CE .NET Series, including all preloaded Software in or provided in connection with the Datalogic Product and all Documentation related to such product, which has been purchased or otherwise acquired by End User, whether obtained directly or indirectly from Datalogic.

1.4 "Software" means any software or computer programs of Datalogic or its third party licensors in machine readable form which is either preloaded in or provided in connection with the Datalogic Product, whether obtained directly or indirectly from Datalogic, including any related update or upgrade such as enhancements or modifications.

## 2. Scope Of License Granted.

2.1 Datalogic grants to End User a non-exclusive, non-transferable, perpetual license to use the Software, solely on a Datalogic Product, in machine-readable form only, solely for End

---

User's internal business purposes. This Agreement does not convey ownership of the Software to End User. Title to the Software shall be and remain with Datalogic or the third party from whom Datalogic has obtained a licensed right. As used in this Agreement, the term "purchase" or its equivalents when applied to the Software shall mean "acquire under license."

2.2 End User shall not copy, modify, decompile, disassemble, reverse engineer, or otherwise reproduce or remanufacture the Software, whether modified or unmodified, nor sell, assign, sublicense, distribute, lend, rent, give, or otherwise transfer the Software to any other person or organization, for purposes other than as expressly provided in this Agreement, or to the extent specifically allowed under foreign law solely for the purposes of interoperability, without Datalogic's prior written consent.

### 3. Transfers, Support.

3.1 Any copying, installing, reproduction, remanufacture, reverse engineering, electronic transfer, or other use of the Software on other than a Datalogic Product will be a material breach of this Agreement.

3.2 End User shall not sell, assign, sublicense, distribute, lend, rent, give, or otherwise transfer a Datalogic Product containing Software to any third party unless such third party agrees with Datalogic in writing to be bound by the terms and conditions of this Agreement. Any such transfer of a Datalogic Product absent such agreement shall be null and void.

3.3 End User may obtain support for Software from Datalogic at Datalogic's standard support fees and under Datalogic's standard support terms and conditions in effect at the time the support is requested.

### 4. Intellectual Property.

End User acknowledges that the Software constitutes valuable trade secrets of Datalogic or Datalogic's third party licensors and that the Software is protected by intellectual property laws and treaties. The license set forth in this Agreement does not transfer to End User any ownership of Datalogic's or its third party licensors' copyrights, patents, trademarks, service marks, trade secrets, or other intellectual property rights and End User shall have no right to commence any legal actions to obtain such rights. End User shall not remove, modify, or take any other action that would obscure any copyright, trademark, patent marking, or other intellectual property notices contained in or on the Datalogic Product.

### 5. Proprietary Information.

5.1 End User acknowledges that Proprietary Information is the confidential, proprietary, and trade secret property of Datalogic and Datalogic's third party licensors and End User acquires no right or interest in any Proprietary Information.

5.2 End User shall not disclose, provide, or otherwise make available the Proprietary Information of Datalogic or its third party licensors to any person other than End User's authorized employees or agents who are under confidentiality agreement, and End User shall not use the Proprietary Information other than in conjunction with use of the Datalogic Product exclusively for End User's internal business purposes. End User shall take steps to protect the Proprietary Information no less securely than if it were End User's own intellectual property.

5.3 The provisions of this Proprietary Information Section shall survive and continue for five (5) years after the termination of this Agreement.

### 6. Limited Warranty.

6.1 Datalogic warrants that, under normal use and operation, the Datalogic Product will conform substantially to the applicable Documentation for the period specified in the Documenta-

---

tion. During this period, for all reproducible nonconformities for which Datalogic has been given written notice, Datalogic will use commercially reasonable efforts to remedy nonconformities verified by Datalogic. End User agrees to supply Datalogic with all reasonably requested information and assistance necessary to help Datalogic in remedying such nonconformities. For all defects reported to Datalogic within the warranty period, Datalogic's liability is limited to providing End User with one copy of corrections or responding to End User's problem reports according to Datalogic's standard assistance practices. Datalogic does not warrant that the product will meet End User's requirements or that use of the product will be uninterrupted or error free, or that Datalogic's remedial efforts will correct any nonconformance. This limited warranty does not cover any product that has been subjected to damage or abuse, whether intentionally, accidentally, or by neglect, or to unauthorized repair or unauthorized installation, and shall be void if End User modifies the product, uses the product in any manner other than as established in the Documentation, or if End User breaches any of the provisions of this Agreement.

6.2 EXCEPT AS PROVIDED IN THIS AGREEMENT, THE DATALOGIC PRODUCT IS PROVIDED "AS IS" AND DATALOGIC MAKES NO WARRANTIES OF ANY KIND, EXPRESS OR IMPLIED, WRITTEN OR ORAL, WITH RESPECT TO THE PRODUCT, AND SPECIFICALLY DISCLAIMS THE IMPLIED WARRANTIES OF MERCHANTABILITY AND FITNESS FOR A PARTICULAR PURPOSE.

## 7. Infringement.

7.1 Datalogic will defend End User against any claim in a lawsuit that the Datalogic Product furnished hereunder infringes a United States patent or copyright of a third party and Datalogic will pay any damages finally awarded against End User by a court of competent jurisdiction that are attributable to such claim or will pay End User's part of any settlement that is attributable to such claim, provided, that 1) End User notifies Datalogic promptly in writing of the claim, 2) Datalogic controls the defense or settlement of the claim, and 3) End User cooperates fully with Datalogic in such defense or settlement. All notices of a claim should be sent to Datalogic Mobile, Inc., 1505 Westec Drive, Eugene, OR 97402.

7.2 In the defense or settlement of any such claim, Datalogic may, at its option, 1) procure for End User the right to continue using the Datalogic Product, 2) modify the Datalogic Product so that it becomes non-infringing, 3) replace the Datalogic Product with an equivalent product not subject to such claim, or 4) provide End User an opportunity to return the Datalogic Product and receive a refund of the purchase price paid, less a reasonable allowance for use.

7.3 Datalogic shall have no liability to End User for claims of infringement based upon 1) the use of any Datalogic Product in combination with any product which Datalogic has not either furnished or authorized for use with such Datalogic Product 2) the use of any Datalogic Product designed, manufactured, or modified to the specifications of End User, or 3) End User's modification of the Datalogic Product without written authorization from Datalogic.

7.4 THE FOREGOING STATES DATALOGIC'S COMPLETE AND ENTIRE OBLIGATION CONCERNING CLAIMS OF PATENT, COPYRIGHT, OR OTHER INTELLECTUAL PROPERTY INFRINGEMENT, CANCELS AND SUPERCEDES ANY PRIOR AGREEMENTS, WHETHER ORAL OR WRITTEN, BETWEEN THE PARTIES CONCERNING SUCH CLAIMS, AND WILL NOT BE MODIFIED OR AMENDED BY ANY PAST, CONTEMPORANEOUS, OR FUTURE AGREEMENTS OR DEALINGS BETWEEN THE PARTIES, WHETHER ORAL OR WRITTEN, EXCEPT AS SET FORTH IN A FUTURE WRITING SIGNED BY BOTH PARTIES.

## 8. Limitation Of Liability.

EXCEPT AS PROVIDED IN SECTION 7, DATALOGIC SHALL NOT BE LIABLE FOR ANY CLAIMS AGAINST END USER BY ANY OTHER PARTY. IN NO EVENT SHALL DATA-

---

LOGIC'S LIABILITY FOR DAMAGES, IF ANY, WHETHER BASED UPON CONTRACT, TORT (INCLUDING NEGLIGENCE), PRODUCT LIABILITY, STRICT LIABILITY, WARRANTY, OR ANY OTHER BASIS, EXCEED THE PRICE OR FEE PAID BY END USER FOR THE DATALOGIC PRODUCT. UNDER NO CIRCUMSTANCES SHALL DATALOGIC BE LIABLE TO END USER OR ANY THIRD PARTY FOR LOST PROFITS, LOST DATA, INTERRUPTION OF BUSINESS OR SERVICE, OR FOR ANY OTHER SPECIAL, CONSEQUENTIAL, CONTINGENT, INDIRECT, INCIDENTAL, PUNITIVE, EXEMPLARY, OR OTHER SIMILAR DAMAGES, EVEN IF DATALOGIC HAS BEEN ADVISED OF THE POSSIBILITY OF SUCH DAMAGES.

## 9. Government Restricted Rights; International Use.

9.1 Use, duplication, or disclosure of the Software by the U.S. Government is subject to the restrictions for computer software developed at private expense as set forth in the U.S. Federal Acquisition Regulations at FAR 52.227-14(g), or 52.227-19 or in the Rights in Technical Data and Computer Software clause at DFARS 252.227-7013(c)(1)(ii), whichever is applicable.

9.2 If End User is using the Datalogic Product outside of the United States, End User must comply with the applicable local laws of the country in which the Datalogic Product is used, with U.S. export control laws, and with the English language version of this Agreement. The provisions of the "United Nations Convention on International Sale of Goods" shall not apply to this Agreement.

## 10. Termination.

10.1 Either party may terminate this Agreement or any license granted under this Agreement at any time upon written notice if the other party breaches any provision of this Agreement.

10.2 Upon termination of this Agreement, End User immediately shall cease using any non-preloaded software and shall return to Datalogic or destroy all non-preloaded software covered by this Agreement, and shall furnish Datalogic with a certificate of compliance with this provision signed by an officer or authorized representative of End User. For preloaded software, End User agrees to sign a waiver prepared by Datalogic concerning further use of the preloaded Software. End User's resumed or continued use of the preloaded Software after termination shall constitute End User's agreement to be bound by the terms and conditions of this Agreement for such use.

## 11. General Provisions.

11.1 Entire Agreement; Amendment. This document contains the entire agreement between the parties relating to the licensing of the Software and supersedes all prior or contemporaneous agreements, written or oral, between the parties concerning the licensing of the Software. This Agreement may not be changed, amended, or modified except by written document signed by Datalogic.

11.2 Notice. All notices required or authorized under this Agreement shall be given in writing, and shall be effective when received, with evidence of receipt. Notices to Datalogic shall be sent to the attention of the Legal Department, General Counsel, Datalogic Mobile, Inc., 1505 Westec Drive, Eugene, OR 97402, or such other address as may be specified by Datalogic in writing.

11.3 Waiver. A party's failure to enforce any of the terms and conditions of this Agreement shall not prevent the party's later enforcement of such terms and conditions.

11.4 Governing Law; Venue: This Agreement and the rights of the parties hereunder shall be governed by and construed in accordance with the laws of the State of Oregon U.S.A, without regard to the rules governing conflicts of law. The state or federal courts of the State of Ore-



---

gon located in either Multnomah or Lane counties shall have exclusive jurisdiction over all matters regarding this Agreement, except that Datalogic shall have the right, at its absolute discretion, to initiate proceedings in the courts of any other state, country, or territory in which End User resides, or in which any of End User's assets are located.

11.5 Attorneys' Fees. In the event an action is brought to enforce the terms and conditions of this Agreement, the prevailing party shall be entitled to reasonable attorneys' fees, both at trial and on appeal.

- END -

# Appendix A: Microsoft® Windows® CE End User License Agreement

Datalogic is contractually obligated by Microsoft® to include the following information as part of our software end user license agreement:

You have acquired a device ("DEVICE") that includes software licensed by Datalogic from Microsoft Licensing Inc. or its affiliates ("MS"). Those installed software products of MS origin, as well as associated media, printed materials, and "online" or electronic documentation ("SOFTWARE") are protected by international intellectual property, laws and treaties. The SOFTWARE is licensed, not sold. All rights reserved.

IF YOU DO NOT AGREE TO THIS END USER LICENSE AGREEMENT ("EULA"), DO NOT USE THE DEVICE OR COPY THE SOFTWARE, INSTEAD, PROMPTLY CONTACT DATALOGIC FOR INSTRUCTIONS ON RETURN OF THE UNUSED DEVICE(S) FOR A REFUND. ANY USE OF THE SOFTWARE, INCLUDING BUT NOT LIMITED TO USE ON THE DEVICE, WILL CONSTITUTE YOUR AGREEMENT TO THIS EULA (OR RATIFICATION OF ANY PREVIOUS CONSENT).

**GRANT OF SOFTWARE LICENSE**, This EULA grants you the following license:

- You may use the SOFTWARE only on the DEVICE.
- **NOT FAULT TOLERANT.** THE SOFTWARE IS NOT FAULT TOLERANT. DATALOGIC HAS INDEPENDENTLY DETERMINED HOW TO USE THE SOFTWARE IN THE DEVICE, AND MS HAS RELIED UPON DATALOGIC TO CONDUCT SUFFICIENT TESTING TO DETERMINE THAT THE SOFTWARE IS SUITABLE FOR SUCH USE.
- **NO WARRANTIES FOR THE SOFTWARE.** THE SOFTWARE is provided "AS IS" and with all faults. THE ENTIRE RISK AS TO SATISFACTORY QUALITY, PERFORMANCE, ACCURACY, AND EFFORT (INCLUDING LACK OF NEGLIGENCE) IS WITH YOU. ALSO, THERE IS NO WARRANTY AGAINST INTERFERENCE WITH YOUR ENJOYMENT OF THE SOFTWARE OR AGAINST INFRINGEMENT, IF YOU HAVE RECEIVED ANY WARRANTIES REGARDING THE DEVICE OR THE SOFTWARE, THOSE WARRANTIES DO NOT ORIGINATE FROM, AND ARE NOT BINDING ON, MS.
- **Note on Java Support.** The SOFTWARE may contain support for programs written in Java. Java technology is not fault tolerant and is not designed, manufactured, or intended for use or resale as online control equipment in hazardous environments requiring fail-safe performance, such as in the operation of nuclear facilities, aircraft navigation or communication systems, air traffic control, direct life support machines, or weapons systems, in which the failure of Java technology could lead directly to death, personal injury, or severe physical or environmental damage. Sun Microsystems, Inc. has contractually obligated MS to make this disclaimer.
- **No Liability for Certain Damages.** EXCEPT AS PROHIBITED BY LAW, MS SHALL HAVE NO LIABILITY FOR ANY INDIRECT, SPECIAL, CONSEQUENTIAL OR INCIDENTAL DAMAGES ARISING FROM OR IN CONNECTION WITH THE USE OR PERFORMANCE OF THE SOFTWARE. THIS LIMITATION SHALL APPLY EVEN IF ANY REMEDY FAILS OF ITS ESSENTIAL PURPOSE. IN NO EVENT SHALL MS BE LIABLE FOR ANY AMOUNT IN EXCESS OF U.S. TWO HUNDRED FIFTY DOLLARS (U.S. \$250.00).

- 
- Limitations on Reverse Engineering, Decompilation, and Disassembly, You may not reverse engineer, decompile, or disassemble the SOFTWARE, except and only to the extent that such activity is expressly permitted by applicable law notwithstanding this limitation.
  - SOFTWARE TRANSFER ALLOWED BUT WITH RESTRICTIONS. You may permanently transfer rights under this EULA only as part of a permanent sale or transfer of the Device, and only if the recipient agrees to this EULA. If the SOFTWARE is an upgrade, any transfer must also include all prior versions of the SOFTWARE.
  - EXPORT RESTRICTIONS, You acknowledge that SOFTWARE is of US-origin. You agree to comply with all applicable international and national laws that apply to the SOFTWARE, including the U.S. Export Administration Regulations, as well as end-user, end-use and country destination restrictions issued by U.S. and other governments. For additional information on exporting the SOFTWARE, see <http://www.microsoft.com/exporting/>.

# **Datalogic Mobile Pegaso™**

## **Windows® CE**

### **Product Warranty**

#### Warranty

Pegaso products are guaranteed against defects in materials and workmanship for the period specified at the time of sale. This warranty shall apply to Pegaso PDAs, Base Stations for the Pegaso and Chargers for the Pegaso. Cables, mounts and other accessory items are specifically warranted for a period of 90-days from product purchase. Customer must notify Datalogic of the claimed defect before the expiration of the Warranty period and obtain from Datalogic a return authorization number for return of the product to designated Datalogic service center. If Datalogic determines Customer's claim is valid, Datalogic will repair or replace product without additional charge for parts and labor. Customer shall be responsible for packaging and shipping the product to the designated Datalogic service center, with shipping charges prepaid. Datalogic shall pay for the return of the product to Customer if the shipment is to a location within the country in which the Datalogic service center is located. Customer shall be responsible for paying all shipping charges, duties, taxes, and any other charges for products returned to any other locations.

Warranty is subject to the limitations and exclusions set forth in the paragraphs that follow.

WARRANTY SET FORTH ABOVE IS IN LIEU OF ANY OTHER WARRANTIES, EXPRESS OR IMPLIED, INCLUDING MERCHANTABILITY AND FITNESS.

#### Exclusions

Warranty coverage shall not apply to any claimed defect, failure or damage which Datalogic determines was caused by: abuse, neglect, improper use of product; failure to provide product maintenance, including but not limited to cleaning of the display in accordance with product reference guide; installation or service of product by other than Datalogic representatives; use of product with any other instrument, equipment or apparatus; modification or alteration of product or units with Warranty Void labels that have been tampered with. External cables and replacement of upper window/cartridge due to scratching, stains or other degradation will not be covered under the Warranty. External power supplies returned for service must be accompanied by the original product for performance of service.

Returned products that Datalogic has determined are not covered by Warranty, will be charged Datalogic standard repair rates then in effect for repair of product. Replacement of display due to scratching, stains or other degradation will not be covered under Warranty. If a product is determined to be not repairable customer will be notified and product may be returned to customer at their request. A minimum repair fee may be charged.

#### Limitation of Liability

DATALOGIC's REPAIR OR REPLACEMENT OF DEFECTIVE PRODUCT AS SET FORTH ABOVE IS THE CUSTOMER'S SOLE AND EXCLUSIVE REMEDY ON ACCOUNT OF CLAIMS OF BREACH OF WARRANTY OR PRODUCT DEFECT. UNDER NO CIRCUMSTANCES WILL DATALOGIC BE LIABLE TO CUSTOMER OR ANY THIRD PARTY FOR ANY LOST PROFITS, OR ANY INCIDENTAL, CONSEQUENTIAL IN-DIRECT, SPECIAL OR

---

CONTINGENT DAMAGES REGARDLESS OF WHETHER DATALOGIC HAD ADVANCE NOTICE OF THE POSSIBILITY OF SUCH DAMAGES.

### Assignment

Customer may not assign or otherwise transfer its rights or obligations under Warranty except to a purchaser or transferee of product. No attempted assignment or transfer in violation of this provision shall be valid or binding upon Datalogic.

### Risk of Loss

Customer shall bear risk of loss or damage for product in transit to Datalogic. Datalogic shall assume risk of loss or damage for product in Datalogic's possession or product being returned to Customer by Datalogic, except such loss or damage as may be caused by the negligence of Customer, its agents or employees. In the absence of specific written instructions for the return of product to Customer, Datalogic will select the carrier, but Datalogic shall not thereby assume any liability in connection with the return shipment.

# Safety Information

## Laser Safety Label

### Laser Safety Label



This figure illustrates an example of a laser safety label, which is located on the scanning pod of laser-based Pegaso units. The label on your unit may appear different or have different information. Please refer to your unit for specific laser safety requirements.

The Advanced Long Range Laser is rated Class 3R per EN60825-1 and Class II per CFR 1040.

Models with the Linear Imager are rated LED Class 1 per IEC 60 825-1:2001, only.

## Advisory Statement



**CAUTION**

**Use of controls, adjustments, or performance of procedures other than those specified herein may result in hazardous visible or invisible laser light exposure.**

## Regulatory Statements

### Federal Communication Commission Interference Statement

This equipment has been tested and found to comply with the limits for a Class B digital device, pursuant to Part 15 of the FCC Rules. These limits are designed to provide reasonable protection against harmful interference in a residential installation. This equipment generates, uses and can radiate radio frequency energy and, if not installed and used in accordance with the instructions, may cause harmful interference to radio communications. However, there is no guarantee that interference will not occur in a particular installation. If this equipment does cause harmful interference to radio or television reception, which can be determined by turning the equipment off and on, the user is encouraged to try to correct the interference by one of the following measures:

- Reorient or relocate the receiving antenna.
- Increase the separation between the equipment and receiver.

- 
- Connect the equipment into an outlet on a circuit different from that to which the receiver is connected.
  - Consult the dealer or an experienced radio/TV technician for help.

FCC Caution: Any changes or modifications not expressly approved by the party responsible for compliance could void the user's authority to operate this equipment.

This device complies with Part 15 of the FCC Rules. Operation is subject to the following two conditions: (1) This device may not cause harmful interference, and (2) this device must accept any interference received, including interference that may cause undesired operation.

The availability of some specific channels and/or operational frequency bands are country dependent and are firmware programmed at the factory to match the intended destination. The firmware setting is not accessible by the end user.

### **IMPORTANT NOTE: Radiation Exposure Statement**

This equipment complies with FCC radiation exposure limits set forth for an uncontrolled environment. End users must follow the specific operating instructions for satisfying RF exposure compliance. To maintain compliance with FCC RF exposure compliance requirements, please follow operation instruction as documented in this manual.

For body worn operation, this device has been tested and meets the FCC RF exposure guidelines when used with Datalogic accessories supplied or designated for this product. Use of other accessories may not ensure compliance with FCC RF exposure guidelines.

This product has been tested and found to comply with the following standards:

- OET BULLETIN 65 SUPPLEMENT C: evaluating compliance with FCC guidelines for human exposure to radio frequency electromagnetic fields.

### **Industry Canada statement:**

This Class B digital apparatus complies with Canadian ICES-003.

*Cet appareil numérique de la classe B est conforme à la norme NMB-003 du Canada.*

This device complies with RSS-210 of the Industry Canada Rules. Operation is subject to the following two conditions: (1) This device may not cause harmful interference, and (2) this device must accept any interference received, including interference that may cause undesired operation.

---

Equipment is certified to the requirements of RSS-210 for 2.4-GHz per IEEE 802.11 (b)(g) standards.

### **IMPORTANT NOTE: Radiation Exposure Statement**

This equipment complies with IC radiation exposure limits set forth for an uncontrolled environment. End users must follow the specific operating instructions for satisfying RF exposure compliance. To maintain with IC RF exposure compliance requirements please follow operation instruction as documented in this manual.



**For information about the disposal of Waste Electrical and Electronic Equipment (WEEE), please refer to the Datalogic Mobile website at [www.mobile.datalogic.com](http://www.mobile.datalogic.com).**



# Laser Safety

## International Caution Statements for CLASS 1<sup>1</sup>, 2<sup>2</sup>, 3R<sup>3</sup> and II<sup>4</sup> Laser Devices

### English

Datalogic scanners are certified in the U.S. to conform to the requirements of DHHS/CDRH 21CFR Subchapter J and to the requirements of IEC/EN 60825-1:1998-2001.

Class 1, 2, 3R and Class II products are not considered to be hazardous. The scanner contains internally a Visible Laser Diode (VLD) whose emissions do not exceed the maximum limits as set forth in the above regulations. The scanner is designed so that there is no human access to harmful laser light during normal operation, user maintenance or during prescribed service operations.

#### *CAUTION*

Do not attempt to open or otherwise service any components in the optics cavity. Opening or servicing any part of the optics cavity by unauthorized personnel may violate laser safety regulations. The optics system is a factory only repair item.

#### *CAUTION*

Use of optical systems with the scanner will increase eye hazard. Optical instruments include binoculars, microscopes and magnifying glasses. This does not include eye glasses worn by the user.

### French

Ces scanneurs du Datalogic sont certifié conforme à la norme DHHS/CDRH 21CFR sous-chapitre J et à la norme IEC/EN 60825-1:1998-2001.

Les produits de class 1, 2, 3R et de class II ne sont pas considérés dangereux. Le scanneur contient une diode laser visible (VLD) dont les émissions ne dépassent pas les limites prescrites dans les normes précitées. Le scanneur est conçu de façon à ce qu'il ne soit pas possible d'accéder à la lumière laser pendant l'utilisation normale, l'entretien par l'utilisateur et les fonctions de maintenance prescrites.

#### *ATTENTION*

Ne pas essayer d'ouvrir ou de réparer les composants de la cavité optique. L'ouverture de la cavité optique ou la réparation de ses composants par une personne non qualifiée peut entraîner le non-respect des règles de sécurité relatives au laser. Le système optique ne peut être réparé qu'en usine.

- 
1. Class 1 applies to IEC/EN STD (Europe).
  2. Class 2 applies to IEC/EN STD (Europe).
  3. Class 3R applies to the Falcon 44xx using ALR (Advanced Long Range) Laser, only.
  4. Class II applies to CDRH STD (US/Canada).

---

## *ATTENTION*

L'utilisation d'instruments optiques avec le scanner augmente le danger pour les yeux. Les instruments optiques comprennent les jumelles, les microscopes et les verres grossissants. Ils ne comprennent pas les lunettes portées par l'utilisateur.

## **German**

Dieser Scanner ist den in den Vereinigten Staaten geltenden Vorschriften des DHHS/CDRH 21 CFR Subchapter J und den Vorschriften der IEC/EN 60825-1:1998-2001 entsprechend bescheinigt.

Produkte der Klasse 1, 2, 3R oder der Klasse II sind als ungefährlich eingestuft. Im Inneren des Scanners befindet sich eine VLD (Visible Laser Diode), deren Ausstrahlung die in den oben genannten Vorschriften angeführten Höchstgrenzen nicht überschreitet. Die Konstruktion des Scanners garantiert, daß bei normalem Betrieb, bei Wartung durch den Benutzer oder im Laufe planmäßiger Wartungsarbeiten kein Zugang zu schädlichem Laserlicht besteht.

### *VORSICHT:*

Unter keinen Umständen darf versucht werden, die Komponenten im Optikhohlraum zu öffnen oder auf irgendwelche andere Weise zu warten. Das Öffnen bzw. Warten der Komponenten im Optikhohlraum durch unbefugtes Personal verstößt gegen die Laser-Sicherheitsbestimmungen. Das Optiksistem darf nur werkseitig repariert werden.

### *VORSICHT:*

Die Verwendung von Optiksystemen mit diesem Scanner erhöht die Gefahr einer Augenbeschädigung. Zu optischen Instrumenten gehören unter anderem Ferngläser, Mikroskope und Vergrößerungsgläser, nicht aber die von Benutzern getragenen Brillen.

## **Italian**

È stato certificato che questo scanner si conforma ai requisiti della sezione J della normativa DHHS/CDRH 21CFR, e anche ai requisiti di IEC/EN 60825-1:1998-2001.

I prodotti di Classe 1, 2, 3R o Classe II non sono considerati pericolosi. Lo scanner contiene al suo interno un Visible Laser Diode (VLD), diodo laser visibile, le cui emissioni non eccedono i limiti stabiliti dalle normative sunnominate. Lo scanner è progettato in modo che non ci sia alcun accesso alla luce dannosa del laser nel corso di uso normale, di manutenzione da parte dell'utente o durante la manutenzione periodica stabilita.

### *ATTENZIONE*

Non tentare di accedere allo scomparto contenete i componenti ottici o di farne la manutenzione. L'apertura dello scomparto, o la manutenzione di qualsiasi parte ottica da parte di personale non autorizzato, potrebbe violare le norme della sicurezza. Il sistema ottico può essere riparato solamente alla fabbrica.

### *ATTENZIONE*

L'uso di strumenti ottici assieme allo scanner può aumentare il pericolo di danno agli occhi. Tali strumenti ottici includono cannocchiali, microscopi e lenti di ingrandimento. Essi non includono gli occhiali indossati dall'utente.

---

## Danish

Denne scanner opfylder de amerikanske krav stillet i "DHHS/CDRH 21CFR Subchapter J" og opfylder også de krav, der stilles i IEC/EN 60825-1:1998-2001.

Klasse 1, 2, 3R eller klasse II produkter anses for at være sikre. Scanneren indeholder en Visible Laser Diode (VLD), der ikke overskrider maksimumgrænserne, som beskrevet i ovenstående reglement. Scanneren er konstrueret, så der ikke er nogen menneskelig kontakt med skadelige niveauer af laserbestråling under normal brug, normal vedligeholdelse eller under foreskrevet servicering.

### *ADVARSEL*

Forsøg ikke at åbne eller reparere komponenter i det optiske hulrum. Uautoriseret åbning eller reparation af komponenter i det optiske hulrum kan være en overtrædelse af lasersikkerhedsregulativer. Det optiske system må udelukkende repareres af Datalogic.

### *ADVARSEL*

Anvendelse af optiske systemer med scanneren øger risikoen for øjenskader. Optiske instruments omfatter kikkerter, mikroskoper og lupper. Det omfatter ikke anvendelse af almindelige briller.

## Dutch

Deze scanner is in de V.S. goedgekeurd en voldoet aan de vereisten van DHHS/CDRH 21CFR Subchapter J een aan de vereisten van IEC/EN 60825-1:1998-2001.

Producten van klasse 1, 2, 3R en klasse II worden niet geacht gevaarlijk te zijn.

De scanner bevat een inwendige Visible Laser Diode (VLD) waarvan de emissies de maximumgrenzen van bovenstaande reglementen niet overschrijden.

De scanner is zo ontworpen dat men bij normaal gebruik, onderhoud of tijdens het uitvoeren van de voorgeschreven onderhoudswerkzaamheden niet aan schadelijke niveaus wordt blootgesteld.

### *WAARSCHUWING*

Probeer niet om onderdelen in de optica-ruimte te openen of er onderhoud aan uit te voeren. Het openen of onderhouden van delen in de optica-ruimte door onbevoegd personeel kan een inbreuk vormen op de laser veiligheidsreglementen. Het optica-systeem mag alleen in de fabriek worden gerepareerd.

### *WAARSCHUWING*

Het gebruik van optische systemen samen met de scanner vergroot het risico voor de ogen. Optische instrumenten zijn onder andere binoculairs, microscopen en vergrootglazen, maar niet de bril die de gebruiker draagt.

## Swedish

Denna scanner uppfyller de amerikanska kraven DHHS/CDRH 21CFR Subchapter J samt kraven i IEC/EN 60825-1:1998-2001.

Produkter i Klass 1, 2, 3R och Klass II anses ej farliga. Scannern är utrustad med en intern, synlig laserdiod (Visible Laser Diode - VLD) vars emission inte överstiger max. värdena i ovanstående säkerhetsföreskrifter. Scannern har konstruerats så att personer vid normal användning, bruksunderhåll och föreskriven service inte utsätts för skadlig laserstrålning.

---

### *VAR FÖRSIKTIG*

Försök inte öppna eller reparera komponenter i den optiska kamaren. Om icke auktoriserad personal öppnar eller reparerar delar i den optiska kammaren, kan detta strida mot säkerhetsföreskrifterna för laserutrustning. Det optiska systemet får endast repareras på fabriken.

### *VAR FÖRSIKTIG*

Användning av optiska system med scannern ökar risken för ögonskada. Optiska instrument inkluderar kikare, mikroskop och förstoringsglas, men inte användarens glasögon.

## **Finnish**

Tämä tutkain on hyväksytty Yhdysvalloissa vastaamaan DHHS/CDRH 21CFR Subchapter J luokka 60825-1:1998-2001 IEC/EN-vaatimuksia.

Luokka 1, 2, 3R tai Luokka II tuotteiden ei katsota olevan vaarallisia. Tutkain sisältää sisäisen näkyvän laserdiodin (Visible Laser Diode (VLD), jonka päästöt eivät ylitä yllä olevien säädösten asettamia maksimirajoja. Tutkain on suunniteltu siten, etteivät ihmiset altistu vaaralliselle lasersäteilylle normaalikäytön, käyttäjän suorittaman huollon tai ohjeiden mukaisten huoltotoimenpiteiden aikana.

### *VAROITUS*

Älä yritä avata tai muuten huoltaa mitään rakenneosia optisessa osassa. Valtuuttamattoman henkilöstön suorittaman optisen osan avauksen tai huoltotoimen voidaan katsoa olevan rikkomus lasersuojajohteja vastaan. Optisen järjestelmän saa korjata ainoastaan tehtaalla.

### *VAROITUS*

Mikäli optisia järjestelmiä käytetään tutkainmen kanssa, silmille aiheutuva vaara lisääntyy. Optiset kojeet käsittävät kiikarit, mikroskoopit ja suurennuslasit. Käyttäjän silmälasit eivät kuulu tähän ryhmään.

## **Norwegian**

Denne skanneren er godkjent i USA i samsvar med retningslinjene for DHHS/CDRH 21CFR, avsnitt J, og til IEC/EN 60825-1:1998-2001.

Produkter i klasse 1 2, 3R eller klasse II ansees ikke som helsefarlige. Skanneren inneholder en innvendig, synlig laserdiode (VLD, Visible Laser Diode), som ikke overskrider maksimalgrensene som er fastsatt i retningslinjene ovenfor. Skanneren er konstruert, slik at personer ikke utsettes for farlige doser med laserstråler ved normal drift, brukers vedlikehold eller ved foreskrevet service.

### *OBS!*

Prøv ikke å åpne eller på noen måte utføre service på noen av delene i det optiske kammeret. Ved å åpne eller utføre service på noen av delene i det optiske kammeret av uautorisert personell, kan krenke forskriftene for lasersikkerhet. Optikkssystemet skal bare repareres på fabrikk.

### *OBS!*

Bruk av optiske systemer med skanneren kan innebære høyere fare for øynene. Optiske instrumenter innbefatter, kikkerter, mikroskop og forstørrelsesglass. Dette omfatter ikke briller som brukeren har på seg.

---

## Portuguese

Este scanner foi certificado nos EUA para atender os requisitos do subcapítulo J do DHHS/CDRH 21 CFR e os requisitos do IEC/EN 60825-1:1998-2001.

Os produtos da Classe 1, 2, 3R ou Classe II não são considerados perigosos. O scanner contém internamente um Diodo de Laser Visível (VLD - Visible Laser Diode) cujas emissões não ultrapassam os limites definidos nos regulamentos mencionados acima. O scanner foi projetado de maneira que não exista acesso humano à luz de laser nociva durante a operação normal, manutenção pelo usuário ou durante as operações recomendadas de serviço.

### *CUIDADO*

Não tente abrir ou consertar qualquer componente da cavidade óptica. A abertura ou manutenção de qualquer peça da cavidade óptica por pessoal não autorizado pode infringir os regulamentos de segurança do laser. O sistema óptico só deve ser reparado na fábrica.

### *CUIDADO*

O uso de instrumentos ópticos com o scanner aumenta o risco para a visão. Incluem-se entre os instrumentos ópticos os binóculos, microscópios e lentes de aumento. Não se incluem os óculos usados pelo usuário.

## Spanish

Este escáner está certificado en los EE.UU. porque reúne los requisitos DHHS/CDRH 21CFR Sección J y los requisitos de IEC/EN 60825-1:1998-2001.

Los productos de Clase 1, 2, 3R o Clase II no se consideran como peligrosos. El escáner tiene en su interior un Diodo Láser Visible (VLD) cuyas emisiones no exceden los límites máximos fijados en los reglamentos mencionados anteriormente. El escáner está diseñado de modo que las personas no tengan acceso a la luz láser peligrosa durante la operación normal, el mantenimiento por parte del usuario o durante las operaciones de servicio prescritas.

### *PRECAUCIÓN*

No intente abrir o de ninguna manera dar servicio a ninguno de los componentes del receptáculo óptico. Abrir o dar servicio a las piezas del receptáculo óptico por parte del personal no autorizado podría ser una violación a los reglamentos de seguridad. El sistema óptico se puede reparar en la fábrica solamente.

### *PRECAUCIÓN*

El uso de sistemas ópticos con el escáner aumentará el riesgo de daños oculares. Los instrumentos ópticos incluyen binoculares, microscopios y lupas. Esto no incluye los lentes recetados usados por el usuario.

本扫描器在美国获得认证，符合 DHHS/CDRH 21CFR J 分章和 IEC 825-1:1998-2001 规定的要求。

I 级和 II 级激光产品均属于对人类无危害的产品。扫描器内有一个可见激光二极管 (VLD)，它发出的辐射低于上述条例规定的最高限度。本扫描器经特别设计，在正常使用情况下，包括用户自行保养或进行规定的维修，人体均不会接触到有害的激光辐射。

注意：

请勿打开激光或检修激光发生器内的任何部件。未经授权的人员打开或修理激光发生器内部件可能违反激光安全条例。光学系统只可送交工厂修理。

注意：

使用扫描器时不得用其他光学仪器，否则会增加对眼睛的危害。这些光学仪器包括望远镜、显微镜和放大镜。但是，操作人员佩戴的眼镜不属于此范围。

本スキャナ は米国においてDHHS/CDRH 21CFR の J項にある製品規格準拠品であり、IEC 825-1:1998-2001の 製品規格に準拠する製品であることが認定されています。

Class I 及び Class II 製品は『危険』とはみなされていません。本 スキャナ内部には上記規格に定める最大値 超えない放射光量を持つ可視光レーザ ダイオード(VLD) が使用されています。本 スキャナ は通常の運用、ユーザによる保守、所定の修理作業において有害なレーザ光が人体に影響を及ぼすことがないように設計されています。

注意:

所定の許可を得た人以外は本スキャナの光学部キャビティを開けたり、その部品に手を触れたりしないで下さい。レーザ安全基準に違反することになります。又工学部は工場でのみしか修理することは出来ません。

注意:

光学機器を使用してスキャナ内部を覗くと、目に悪い影響を与えることがあります。光学機器には双眼鏡、顕微鏡、拡大鏡等が含まれますが、使用者のかけている眼鏡はこれには該当しません。

# Europe – EU Declaration of Conformity

This device complies with the essential requirements of the R&TTE Directive 1999/5/EC. The following test methods have been applied in order to prove presumption of conformity with the essential requirements of the R&TTE Directive 1999/5/EC:

- **EN 60950-1: 2001**  
Safety of Information Technology Equipment
- **EN50361 : (2001-07)**  
Basic standard for the measurement of specific absorption rate related to human exposure to electromagnetic fields from mobile phones (300 MHz-3 GHz)
- **EN50371 : (2002-03)**  
Generic standard to demonstrate the compliance of low power electronic and electrical apparatus with the basic restrictions related to human exposure to electromagnetic fields (10 MHz - 300 GHz) -- General public
- **EN50392 : (2004-01)**  
Generic standard to demonstrate the compliance of electronic and electrical apparatus with the basic restrictions related to human exposure to electromagnetic fields (0 Hz - 300 GHz)
- **EN 300 328 V1.6.1 (2004-11)**  
Electromagnetic compatibility and Radio spectrum Matters (ERM); Wideband transmission systems; Data transmission equipment operating in the 2,4 GHz ISM band and using wide band modulation techniques; Harmonized EN covering essential requirements under article 3.2 of the R&TTE Directive
- **EN 300 328 V1.7.1: (2006-10)**  
Electromagnetic compatibility and Radio spectrum Matters (ERM); Wideband Transmission systems; Data transmission equipment operating in the 2,4 GHz ISM band and using spread spectrum modulation techniques; Harmonized EN covering essential requirements under article 3.2 of the R&TTE Directive



---

— **EN 301 511 V9.0.2: (2003-03)**

Global System for Mobile communications (GSM); Harmonized standard for mobile stations in the GSM 900 and DCS 1800 bands covering essential requirements under article 3.2 of the R&TTE directive (1999/5/EC)

— **EN 301 489-1 V1.6.1: (2005-09)**

Electromagnetic compatibility and Radio Spectrum Matters (ERM); ElectroMagnetic Compatibility (EMC) standard for radio equipment and services; Part 1: Common technical requirements

— **EN 301 489-17 V1.2.1 (2002-08)**

Electromagnetic compatibility and Radio spectrum Matters (ERM); ElectroMagnetic Compatibility (EMC) standard for radio equipment and services; Part 17: Specific conditions for 2,4 GHz wideband transmission systems and 5 GHz high performance RLAN equipment

— **EN 301 489-7 V1.2.1: (2002-08)**

ElectroMagnetic compatibility and Radio spectrum Matters (ERM); ElectroMagnetic Compatibility (EMC) standard for radio equipment and services; Part 7: Specific conditions for mobile and portable radio and ancillary equipment of digital cellular radio telecommunications systems (GSM and DCS)



0560



## DECLARATION OF CONFORMITY-



Datalogic hereby declares that the Equipment specified below has been tested and found compliant to the following Directives and Standards:

EU Directives: 2004/108/EC EMC, 2006/95/EC Low Voltage,  
1999/5/EC R&TTE, 2006/66/EC Battery, 2002/95/EC RoHS,  
2002/96/EC WEEE

Standards: EN 60950-1:2001 - ITE Safety  
EN 50361: 2001-07 - SAR for GSM  
EN 50371: 2002-03 - SAR for Low Voltage Diveces  
EN 50392: 2004-01 - SAR  
EN 300 328: 2004 V1.6.1, V1.7.1 - Radio  
EN 301 511: 2003-03 - GSM 900/1800 MHz radio bands  
EN 55022:2006 - Generic Emission  
EN 55024:2004 - Generic Immunity  
EN 300 489-1 -17: 2002/2005 - Radio Immunity

Equipment Type: Mobile Computer and accessories

Product Name: Pegaso (formerly Pegaso P20 or P40)

Placed into EU Service: July 2007 (for some models)

Responsible Manufacturer: Datalogic Mobile, Inc. 1505 Westec Dr., Eugene, OR USA  
Datalogic Mobile Srl Via S. Vitalino, 13 40012  
Lippo di Calderara di Reno, Bologna Italy

A handwritten signature in black ink, appearing to read "Wes Emmert", followed by a horizontal line.

Wes Emmert  
Quality Manager  
Datalogic Mobile Inc.  
1505 Westec Drive  
Eugene, OR 97402 USA



## Declaration of Conformity with Regard to R&TTE Directive 1999/5/EC

<b>English</b>	Hereby, declares that this <i>Pegaso</i> is in compliance with the essential requirements and other relevant provisions of Directive 1999/5/EC.
<b>Nederlands</b>	Hierbij verklaart dat het toestel <i>Pegaso</i> in overeenstemming is met de essentiële eisen en de andere relevante bepalingen van richtlijn 1999/5/EG.
<b>Suomi</b>	vakuuttaa täten että <i>Pegaso</i> tyyppinen laite on direktiivin 1999/5/EY oleellisten vaatimusten ja sitä koskevien direktiivin muiden ehtojen mukainen.
<b>Français</b>	Par la présente déclare que l'appareil <i>Pegaso</i> est conforme aux exigences essentielles et aux autres dispositions pertinentes de la directive 1999/5/CE.
<b>Deutsch</b>	Hiermit erklärt dass sich das Gerät <i>Pegaso</i> in Übereinstimmung mit den grundlegenden Anforderungen und den übrigen einschlägigen Bestimmungen der Richtlinie 1999/5/EG befindet.
<b>Italiano</b>	Con la presente dichiara che questo <i>Pegaso</i> è conforme ai requisiti essenziali ed alle altre disposizioni pertinenti stabilite dalla direttiva 1999/5/CE.
<b>Dansk</b>	Undertegnede erklærer herved, at følgende udstyr <i>Pegaso</i> overholder de væsentlige krav og øvrige relevante krav i direktiv 1999/5/EF.
<b>Português</b>	Declara que este <i>Pegaso</i> está conforme com os requisitos essenciais e outras disposições da Directiva 1999/5/CE.
<b>Español</b>	Por medio de la presente declara que el <i>Pegaso</i> cumple con los requisitos esenciales y cualesquiera otras disposiciones aplicables o exigibles de la Directiva 1999/5/CE.
<b>Svenska</b>	Härmed intygar att denna <i>Pegaso</i> står i överensstämmelse med de väsentliga egenskapskrav och övriga relevanta bestämmelser som framgår av direktiv 1999/5/EG.
<b>Česky</b>	Tímto prohlašuje, že tento <i>Pegaso</i> je ve shodě se základními požadavky a dalšími příslušnými ustanoveními směrnice 1999/5/ES.
<b>Eesti</b>	Käesolevaga kinnitab seadme <i>Pegaso</i> vastavust direktiivi 1999/5/EÜ põhinõuetele ja nimetatud direktiivist tulenevatele teistele asjakohastele sätetele.
<b>Ελληνική</b>	ΜΕ ΤΗΝ ΠΑΡΟΥΣΑ ΔΗΛΩΝΕΙ ΟΤΙ <i>Pegaso</i> ΣΥΜΜΟΡΦΩΝΕΤΑΙ ΠΡΟΣ ΤΙΣ ΟΥΣΙΩΔΕΙΣ ΑΠΑΙΤΗΣΕΙΣ ΚΑΙ ΤΙΣ ΛΟΙΠΕΣ ΣΧΕΤΙΚΕΣ ΔΙΑΤΑΞΕΙΣ ΤΗΣ ΟΔΗΓΙΑΣ 1999/5/EK.
<b>Latviski</b>	Ar šo deklarē, ka <i>Pegaso</i> atbilst Direktīvas 1999/5/EK būtiskajām prasībām un citiem ar to saistītajiem noteikumiem.
<b>Lietuvių</b>	Šiuo deklaruoju, kad šis <i>Pegaso</i> atitinka esminius reikalavimus ir kitas 1999/5/EB Direktyvos nuostatas.
<b>Malti</b>	Hawnhekk, jiddikjara li dan <i>Pegaso</i> jikkonforma mal-htigijiet essenzjali u ma provvedimenti oħrajn relevanti li hemm fid-Direttiva 1999/5/EC.
<b>Magyar</b>	Alulírott, nyilatkozom, hogy a <i>Pegaso</i> megfelel a vonatkozó alapvető követelményeknek és az 1999/5/EC irányelv egyéb előírásainak.
<b>Polski</b>	Niniejszym oświadczam, że <i>Pegaso</i> jest zgodny z zasadniczymi wymogami oraz pozostałymi stosownymi postanowieniami Dyrektywy 1999/5/EC.
<b>Slovensko</b>	I izjavlja, da je ta <i>Pegaso</i> v skladu z bistvenimi zahtevami in ostalimi relevantnimi določili direktive 1999/5/ES.
<b>Slovensky</b>	Týmto vyhlasuje, že <i>Pegaso</i> spĺňa základné požiadavky a všetky príslušné ustanovenia Smernice 1999/5/ES.

This device is a 2.4 GHz wideband transmission system (transceiver), intended for use in all EU member states and EFTA countries, except in France and Italy where restrictive use applies.

In Italy the end-user should apply for a license at the national spectrum authorities in order to obtain authorization to use the device for setting up outdoor radio links and/or for supplying public access to telecommunications and/or network services.

This device may not be used for setting up outdoor radio links in France and in some areas the RF output power may be limited to 10 mW EIRP in the frequency range of 2454 – 2483.5 MHz. For detailed information the end-user should contact the national spectrum authority in France.

**Corporate Headquarters**

Datalogic S.p.A.

Via Candini, 2

40012 Lippo di Calderara di Reno

Bologna - Italy

Telephone: +39 051 3147011

Fax: +39 051 726562



[www.mobile.datalogic.com](http://www.mobile.datalogic.com)

**Datalogic Mobile, Inc.**

1505 Westec Dr.

Eugene, OR 97402

USA

Telephone: (541) 743-4800

Fax: (541) 743-4900

