

Parts List

- 1- PS6D4400UUSE USB, Ethernet, & Serial Charging Cradle
- 1 - USB Type-A to Type-B Cable (1 meter)
- 1 - Quick Connect Guide (this document)
- 1 - CAT5 Ethernet Cable



Ethernet,  
USB, &  
Serial

Charging  
Cradles

PS6D4400UUSE  
Quick Start Guide

1

Connect 4400

Place the 4400 into the cradle to charge the Datalogic Falcon.

Problems?

Download the User's Guide and Troubleshooting Tips from the Datalogic website at: [www.mobile.datalogic.com](http://www.mobile.datalogic.com). Click on the *SW & Utilities* link.

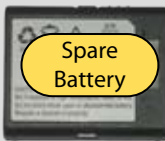
**Still having problems?**  
Contact Technical Support at: [www.mobile.datalogic.com](http://www.mobile.datalogic.com). Click on the *Contact Us* link.



2

Connect Power

Charge your Spare Battery



Plug the Standard 115V Power Cord into the Power Adapter



Power Adapter

Plug the barrel connector into the Cradle's Power Connector

6

Choose

Slide Selector Switch to choose Network or USB communication.



5

Connect Network

For Network Communication:

Connect one end of the standard Ethernet cable to the cradle's RJ45 connector and the other end to your hub, router, switch, or wall data outlet



3

Connect USB

For Local Communication:

Connect the USB Type-A connector to a Type-A connector on the Host Computer.

Connect the USB Type-B connector to the USB connector on the cradle.



4

Install Ethernet Driver

The Ethernet Cradle Driver is required for network communications with a CAT5 Ethernet cable.

For information on installing and configuring the Ethernet Cradle Driver, refer to steps **a** and **b** on the reverse side.

No other software is required if the default DHCP is used to obtain the cradle's IP address. If a static IP address or other special network requirement must be configured, you will also need to download the Cradle Manager software from [www.mobile.datalogic.com](http://www.mobile.datalogic.com). Additional information on both programs is contained in the User Manual, which is also available from the website.

FCC Regulatory Compliancey

FCC Statement

This equipment has been tested and found to comply with the limits for a Class A digital device, pursuant to Part 15 of the FCC Rules. These limits are designed to provide reasonable protection against harmful interference when the equipment is operated in a commercial environment. This equipment generates, uses, and can radiate radio frequency energy and, if not installed and used in accordance with the instruction manual, may cause harmful interference to radio communications. Operation of this equipment in a residential area is likely to cause harmful interference in which case the user will be required to correct the interference at his own expense.

CE Statement:

Warning  
This is a Class A product. In a domestic environment this product may cause radio interference in which case the user may be required to take adequate measures.

## a Install Ethernet Cradle Driver

Download the Ethernet Cradle Driver software from the Datalogic website at [www.mobile.datalogic.com](http://www.mobile.datalogic.com). Click on the *SW & Utilities* link to find the appropriate file.

Use ActiveSync to copy the CradleDrvr CAB file into the Windows directory on the terminal.

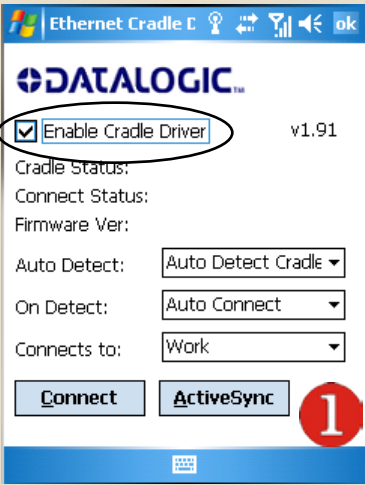
Use the terminal's File Explorer application to locate the CradleDrvr CAB file and tap on it with the Stylus to install it.

Warm boot the terminal. Follow the instructions in the terminal's User Guide if you need guidance.

## b Configure Ethernet Cradle Driver

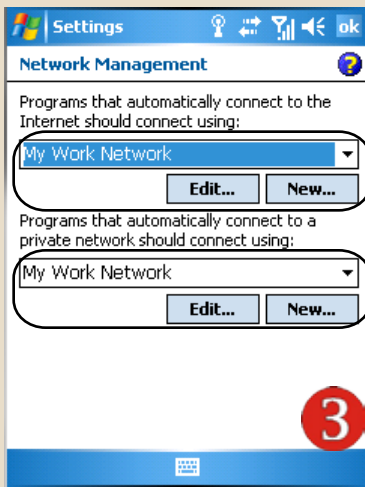
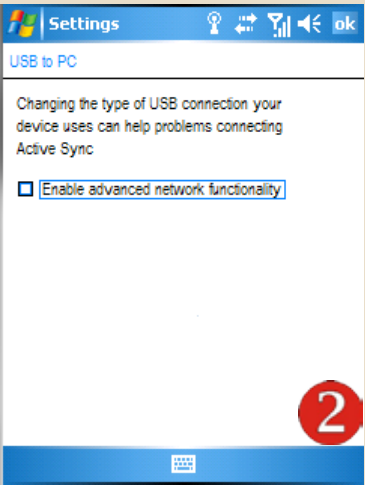
### Windows CE

1. Launch app (Start -> Programs -> Communication -> Ethernet Cradle Driver)
2. Enable connection by clicking the Enable Cradle Driver checkbox. (See image 1)



### Windows Mobile 5.0

1. Launch app (Start -> Programs -> Communication -> Ethernet Cradle Driver)
2. Enable connection by clicking the Enable Cradle Driver checkbox. (See image 1)
3. Disable RNDIS (Start->Settings->Connections->USB to PC-> and deselect "Enable advanced network functionality") (See image 2)
4. Configure network settings (Start-> Settings->Connections-> Connections->Advanced-> Select Network Settings->. Set both dropdowns to "My Work Network") (See image 3)



No other software is required if the default DHCP is used to obtain the cradle's IP address. If a static IP address or other special network requirement must be configured, you will also need to download the Cradle Manager software from [www.mobile.datalogic.com](http://www.mobile.datalogic.com). Additional information on both programs is contained in the User Manual, which is also available from the website.

### Troubleshooting Tips

Ensure you have set up an ActiveSync partnership with Host PC BEFORE you try to setup PS6D4400UUSE.

Confirm connectivity by using Internet Explorer browser on Datalogic Falcon Handheld Computer to visit a website on the internet, or try to ping the router or a network computer.

Ensure PS6D4400UUSE is configured for network visibility - i.e.  
(1) default setup is DHCP, or  
(2) use Cradle Manager to configure for networks requiring a valid static IP address. See the User Guide for more information on configuration issues.

Ensure the PS6D4400UUSE's power adapter is connected, and functioning correctly.

Ensure software is installed correctly.

More Troubleshooting help is available in the User Guide.

### Contact Support

Phone: 1.800.547.5304  
E-mail: [techsupport.mobile@datalogic.com](mailto:techsupport.mobile@datalogic.com)  
Hours: Monday - Friday 6:30 AM - 4:00 PM PST

For additional product inquiries or sales questions, please e-mail [info.mobile.us@datalogic.com](mailto:info.mobile.us@datalogic.com) or call 541.868.3610.