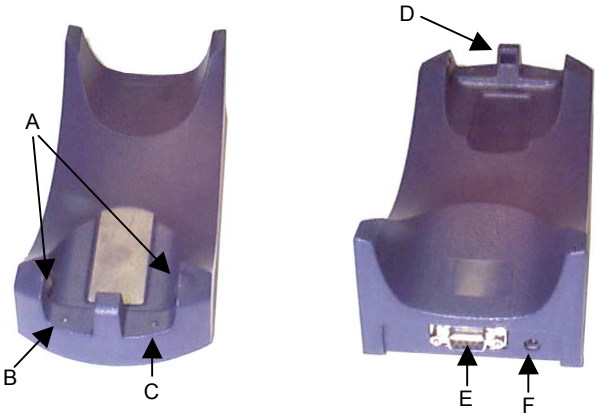




## MINEC 4x CRADLE



- |   |                                |   |                        |
|---|--------------------------------|---|------------------------|
| A | Battery recharge contacts      | D | IrDA window            |
| B | Battery charging indicator LED | E | RS232 serial port      |
| C | Data Transfer LED              | F | Power supply connector |

The Minec 4x Cradle is a battery charger and also functions as a serial communication interface between the host computer and the IrDA optical interface on the Minec 4x terminal.

By correctly inserting the Minec 4x terminal into the cradle, with the battery recharge contacts and the IrDA port as shown in the figure below, its batteries can be charged.



## LED INDICATORS

The cradle has two LEDs: the **left LED** indicates the terminal battery status, the **right LED** indicates the data transfer between the cradle and the Host.

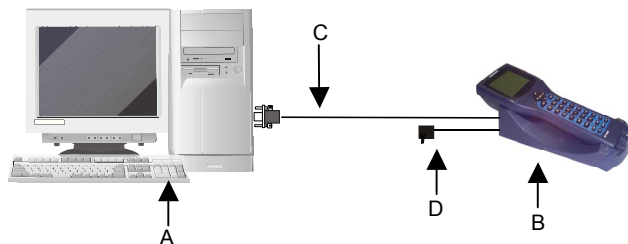
LED	STATUS	
Charging Status	green	terminal battery charged / cradle powered
	amber	terminal battery charging
Data Transfer	blinking	data transfer between terminal and Host

## RS232 CONNECTION

A single Minec 4x cradle can be connected to the Host by means of a RS232 cable included in the package.

Then, it is necessary to insert the power supply plug into the jack on the cradle and attach the power supply to a power outlet.

The terminal communicates to the cradle through the IrDA port and the cradle transmits data to the PC through an RS232 connection.



- |   |                               |   |                        |
|---|-------------------------------|---|------------------------|
| A | Host computer                 | C | RS232 cable (included) |
| B | Minec 4x cradle with terminal | D | Power supply           |

To guarantee a correct communication between the host and the Minec 4x terminal through the Minec 4x cradle, the Microsoft® ActiveSync® program should be used. It is therefore necessary to install the RS232 driver which is either already present in the operating system, or can be installed from the CD-ROM.

In order to install the RS232 driver, it is necessary to have at least the following:

- PC with a Pentium processor;
- Windows 2000 or Windows XP operating systems.



## NOTE

Once the RS232 driver has been installed, the communication between PC and cradle will be performed through a virtual Infrared port.

## Installation Procedure:

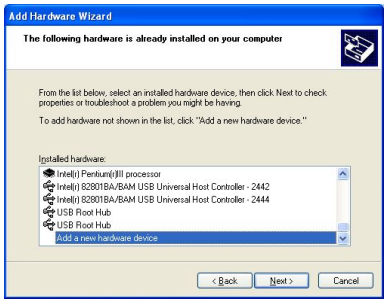
1. Start the “Add/Remove Hardware Wizard” in the PC Control Panel:



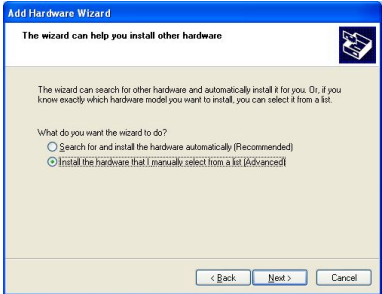
2. Select “Yes, I have already connected the hardware”:



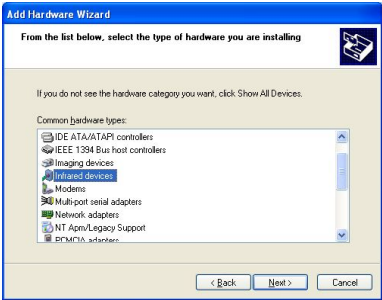
3. Select the “Add a new hardware device” option from the list below to add the new driver:



4. Choose the option allowing to manually select the hardware to be installed:



5. Select “Infrared device” as hardware type:

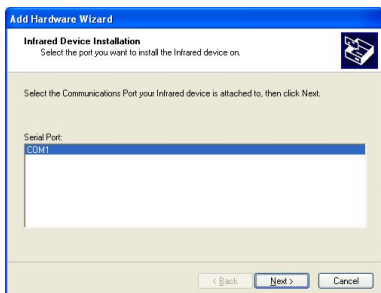


6. Select “Vishay Telefunken” as Infrared device to be installed:

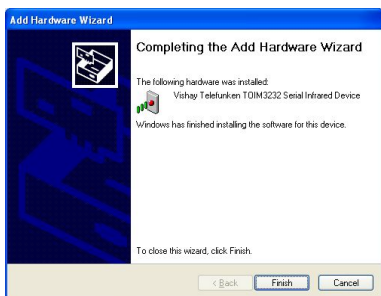


Then, a further window will appear to confirm the selection of the infrared device.

7. Select the COM port to which you are installing the selected infrared device:



8. Click on the “Finish” button to complete the procedure:



#### NOTE

*Only one infrared device at a time must be active. To disable other infrared devices, use the Device Manager available in the Control Panel\System\Hardware folder.*

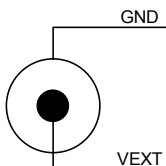
## ACCESSORIES

### Power Supply

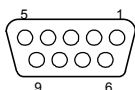
94ACC1275 Minec 4x Power Supply

### POWER SUPPLY POLARITY

The cradle power jack has the following polarity:



## RS232 CONNECTOR PINOUT



**RS232 connector**

RS232 pinout		
Pin	Name	Function
1	CD	Carrier Detect
2	TXD	Transmitted Data
3	RXD	Received Data
4	DTR	Data Terminal Ready
5	GND	Ground
6	DSR	Data Set Ready
7	RTS	Request to Send
8	CTS	Clear to Send
9	RI	Ring Indicator

## TECHNICAL FEATURES

ELECTRICAL	
Power supply*	7-10VDC - 500 - 800 mA
Consumption	9W Max
Charge time	3 hours max.
COMMUNICATION	
Interface to PC	RS232
Interface to Terminal	IrDA
Baudrate	2400 - 115200**
PHYSICAL	
Dimensions	199 x 90 x 59 mm (7.84 x 3.55 x 2.32 in)
Weight (without connection cables)	185 g (6.5 oz)
LED Indicators	Charging Status and Data Transfer
ENVIRONMENTAL	
Working temperature	-20° to +55 °C (-4° to +131 °F)
Storage temperature	-30° to +60 °C (-22° to +140 °F)
Humidity	95% without condensation
Degree of protection EN 60529	IP 40
Electrostatic discharge EN 61000-4-2	up to 8 KV

\* The power supply current must not exceed 1A.

\*\* default