



DT 2

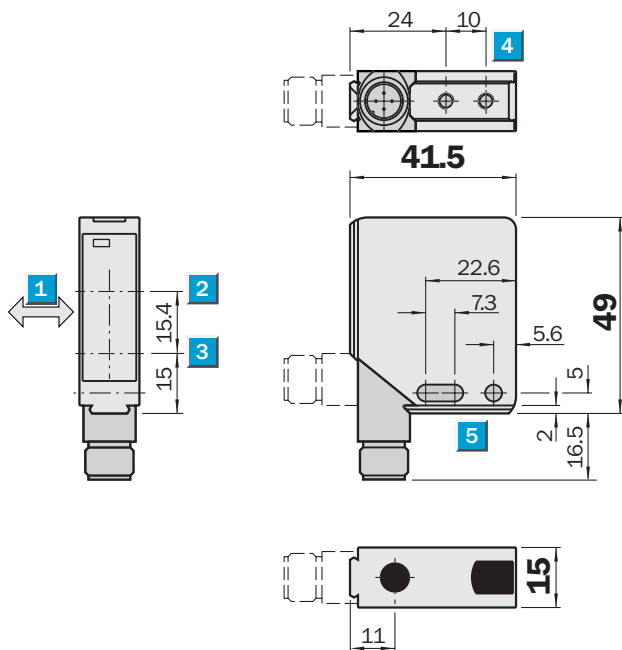
Photoelectric proximity switch with analogue output



	Measurement range 50 ... 300 mm
Photoelectric proximity switch	

- Analogue output
- 90° rotatable M 12 plug
- Infrared light
- 1 mm resolution

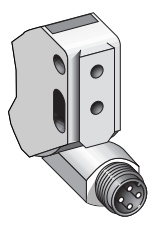
Dimensional drawing



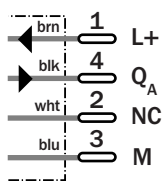
- 1 Standard direction of the material being scanned
- 2 Optical axis, receiver
- 3 Optical axis, sender
- 4 M 4 threaded mounting hole – 4 mm deep
- 5 Through borehole Ø 4.2 mm

Connection type

DT 2-410



4-pin, M 12



DT 2 Photoelectric proximity switch with analogue output

Technical data		DT 2-	410							
Measurement range ⁴⁾	90 % remission: 50 ... 300 mm									
	6 % remission: 50 ... 250 mm									
Accuracy										
Object with 90 % remission	±8 % to current value									
Reproducibility										
Object with 90 % remission	3 % to 200 mm									
	5 % to 300 mm to current value									
Light source ²⁾ , light type										
	Infrared, 880 nm									
Light spot diameter	80 mm at 300 mm									
Supply voltage V_s										
	18 ... 30 V DC ³⁾									
Ripple ⁴⁾	< 5 V_{PP}									
Current consumption ⁵⁾	< 100 mA									
Analogue output										
	4–20 mA									
Response time	200 ms									
Resolution	1 mm									
Connection type										
	Plug, M 12, 4-pin									
VDE protection class ⁶⁾										
	ⓘ									
Enclosure rating										
	IP 67									
Ambient temperature T_A										
	Operation –10 °C ... +45 °C									
	Storage –25 °C ... +75 °C									

⁴⁾ Falling below of the measurement range results in ambiguous values
Exceeding the measurement range results in values = 20.3 mA

²⁾ Average service life 100,000 h at $T_A = +25 °C$

³⁾ Limit values, reverse-polarity protected

⁴⁾ May not exceed or fall short of V_s tolerances

⁵⁾ Without load

⁶⁾ Reference voltage DC 30 V

Order Information	
Type	Part no.
DT 2-410	1 024 093

Great Britain

Erwin Sick Ltd.
Waldkirch House
39 Hedley Road, St. Albans
Hertfordshire AL 1 5BN
☎ +44 17 27-83 11 21
Fax +44 17 27-85 67 67
info@sick.co.uk

USA

SICK, Inc.
6900 West 110th Street
Bloomington, MN 55438
☎ +1 (952) 9 41-67 80
Fax +1 (952) 9 41-92 87
WATS: 1-800-325-7425
info@sickusa.com

Australia

Sick Pty. Ltd. Head Office
P.O. Box 214
899 Heidelberg Road
Ivanhoe, Vic. 3079, Australia
☎ +61 39 49 74 10 0
(0 08) 33 48 02 - toll free
Fax +61 39 49 71 18 7
sales@sick.com.au

