

# 1005TX Industrial Ethernet Switch

N-Tron Networking Series



## ▶▶▶ Unmanaged Gigabit Industrial Ethernet Switch

Red Lion's N-TRON® 1005TX is a low cost unmanaged five port Gigabit Industrial Ethernet Switch.

Housed in a hardened, metal DIN-Rail enclosure, the 1005TX is designed for use in mission critical data acquisition, control, and Ethernet I/O applications where Gigabit capability is required. The 1005TX Gigabit network switch is designed to solve the most demanding industrial communication requirements while providing high throughput and minimum downtime.



### APPLICATIONS

- > Factory Automation
- > Utilities
- > SCADA
- > Security Surveillance
- > Transportation
- > Alternative Energy

### PRODUCT HIGHLIGHTS

- > Compact, Industrial Design
- > Up to 5 port connections
- > High Environmental Specifications
- > Increased Networking Performance
- > Plug-and-Play Operation

### FEATURES & BENEFITS

- > Compact, Space Saving Package
- > Full IEEE 802.3, 802.3u, and 802.3ab Compliance
- > Five 10/100/1000BaseT RJ-45 Ports
- > Unmanaged Operation
- > Extended Environmental Specifications
  - -40°C to 85° Operating Temperature
  - >2M Hours MTBF
- > Supports Full/Half Duplex Operation
- > Up to 10.0 Gb/s Maximum Throughput
- > MDIX Auto Sensing Cable
- > Auto Sensing Speed and Flow Control
- > Full Wire Speed Communications
- > Supports up to 4,000 MAC Addresses
- > Store-and-Forward Technology
- > Jumbo Frame support
- > Redundant Power Inputs (10-30 VDC)
- > LED Link/Activity Status Indication
- > Hardened Metal DIN-Rail Enclosure

industrial  
networking



# ▶▶▶ Unmanaged Gigabit Industrial Ethernet Switch Specifications

## SWITCH PROPERTIES

Operation: Unmanaged  
 Number of Mac Addresses: 4,000  
 Full IEEE Compliant: 802.3, 802.3u, and 802.3ab  
 Switching Method: Store and forward  
 Activity Status Indication: LED link  
 MTBF: >2 million hours  
 Supports Full/Half Duplex Operation  
 Maximum Throughput: Up to 10.0 Gb/s  
 MDIX Auto Sensing Cable  
 Auto Sensing Speed and Flow Control  
 Communications: Full wire speed

## POWER INPUT

Input Voltage: 10-30 VDC  
 Steady Input Current: 230mA@24V  
 Inrush: 13Amp/61us@24V

## CONNECTORS

10/100/1000BaseT: Five (5) RJ-45 TX copper ports

## NETWORK MEDIA

10BaseT: >Cat3 Cable  
 100BaseTX: >Cat5 Cable  
 1000BaseT: >Cat5e Cable

## RECOMMENDED WIRING CLEARANCE

Front: 2" (5.08 cm)  
 Top: 1" (2.54 cm)

## CERTIFICATION

FCC/CE (CFR 47, Part 15, Subpart B, Class A)  
 EN 61000-6-2/4, IEC 61000-4-2/3/4/5/6  
 EN 55011, ICES-003  
 UL Class I, Division 2, Groups A, B, C and D; T4  
 UL 508, ANSI/ISA-12.12.01-2013 Class I and II, Division 2 and  
 Class III, Division 1 and 2  
 cUL: C22.2 No. 14-M05, C22.2 No. 213-M1987 Class I, Division 2  
 Hazardous Locations  
 Rail: EN 50155, EN 50121 and EN 61373  
 ABS Type Approval for Shipboard Applications  
 DNV Type Approval Certification  
 RoHS Compliant

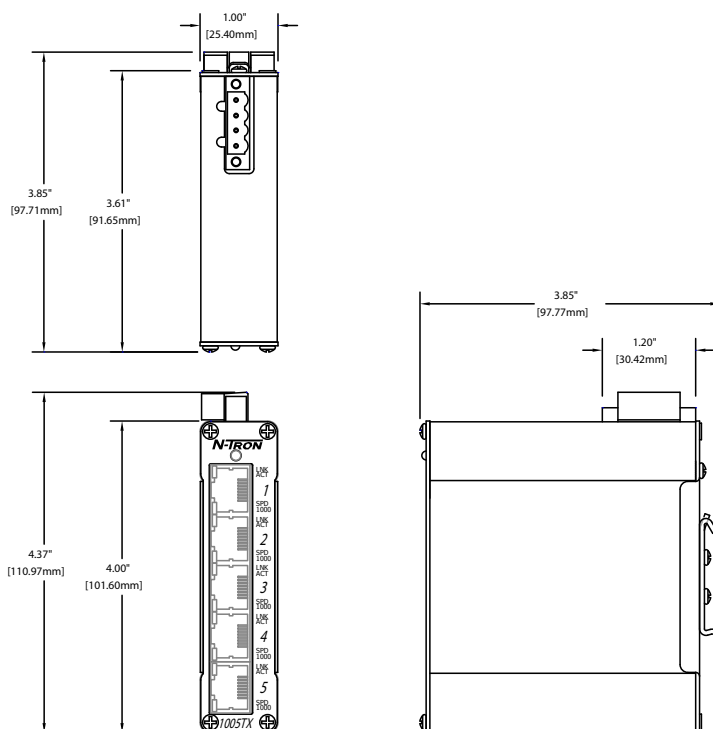
## DESIGNED TO MEET

IEEE 1613 for Electric Utility Substations  
 NEMA TS1/TS2 for Traffic Control

## ENVIRONMENTAL

Operating Temperature: -40°C to 85°C  
 Storage Temperature: -40°C to 85°C  
 Operating Humidity: 10% to 95%(Non Condensing)  
 Operating Altitude: 0 to 10,000 ft.

## DIMENSIONS



## MECHANICAL

### Case Dimensions

Height: 4.0" (10.2 cm)  
 Width: 1.0" (2.6 cm)  
 Depth: 3.7" (9.4 cm)  
 Weight: 0.61 lbs. (0.27 kg)  
 Mount: DIN Rail 35mm

All specifications are subject to change. Consult the company website for more information.

## ORDERING GUIDE

PART NUMBER	DESCRIPTION
1005TX	Five 10/100/1000Base T Ports
1000-PM	Panel Mount Kits
NTPS-24-1.3	DIN-Rail Power Supply 24V@1.3 Amp



[www.redlion.net](http://www.redlion.net)

Connect. Monitor. Control.

**Americas**  
 sales@redlion.net

**Asia-Pacific**  
 asia@redlion.net

**Europe  
 Middle East  
 Africa**  
 europe@redlion.net

+1 (717) 767-6511

As the global experts in communication, monitoring and control for industrial automation and networking, Red Lion has been delivering innovative solutions for over forty years. Our award-winning technology enables companies worldwide to gain real-time data visibility that drives productivity. Product brands include Red Lion, N-Tron and Sixnet. With headquarters in York, Pennsylvania, the company has offices across the Americas, Asia-Pacific and Europe. For more information, please visit [www.redlion.net](http://www.redlion.net). Red Lion is a Spectris company.