



EXOR
INTERNATIONAL

eBIS
Home & Building Automation

BR004120433

EXOR INTERNATIONAL

GERMANY
Exor GmbH
Phone: +49 202 27911 0
Fax: +49 202 27911 44
info@exorde
www.exorde

INDIA
Exor India Private Ltd.
Phone: +91 -022 27810422
Fax: +91 -022 27810424
info@exorindia.com
www.exorindia.com

ITALY
Exor International S.p.A.
Phone: +39 045 8750404
Fax: +39 045 8779023
info@exorint.it
www.exorint.it

SWITZERLAND
Exor Schweiz GmbH
Phone: +41 55 6195807
Fax: +41 55 6195806
info@exorschweiz.ch
www.exorschweiz.ch

USA
Exor Electronic R&D
Phone: +1 513 874 0900
Fax: +1 513 874 2707
info@exor-rd.com
www.exor-rd.com

AUDIN - 8, avenue de la malle - 51370 Saint Brice Courcelles - Tel : 03.26.04.20.21 - Fax : 03.26.04.28.20 - Web : <http://www.audin.fr> - Email : info@audin.fr

EXOR
INTERNATIONAL

DomiOP eBIS500 Series

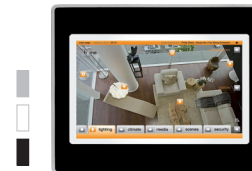
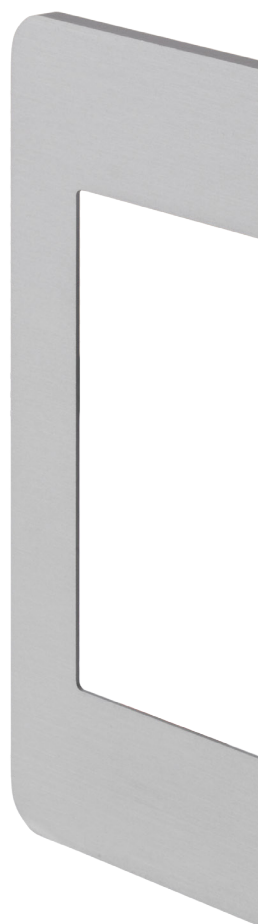
The DomiOP eBIS500 Series HMI products combine state-of-the-art features and top performance with an outstanding design. They are the ideal choice for all demanding HMI applications in building and home automation

- Flexible building control for today and tomorrow
- Switch and Dim Lights, Control blinds, Temperature control, Heating, etc.
- Scene programming for more comfortable living. Define switching states for lighting, venetian blinds, temperature, etc.
- Designed for wall installation
- 4.3", 7", 10" to 13.3" TFT color display with 64K Colors
- Resistive touchscreen
- Integrated 10/100 Ethernet interface
- Optional interface KNX-TP
- Three front foil colors (black/white/silver) plus optional aluminum front covers (some models only)
- USB port for flash drives
- SD memory card
- Residential CE mark
- Low energy consumption
- Five year warranty!

Software Highlights

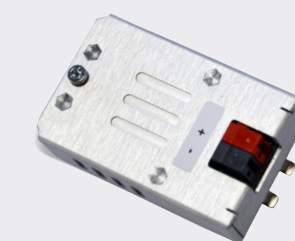
Products have been designed as the ideal platforms for JMobile applications

- Powerful and intuitive programming with JMobile Studio
- Everything under control from anywhere at anytime
- Remote access (client, browser-based and VNC-based)
- Support of a wide range of communication drivers
- Advanced vector graphics with SVG support
- Full support of dynamic object properties
- Data display in numerical, text, bargraph, analog gauges and graphic image formats
- Rich set of classic HMI features
- Data acquisition and trend presentation
- Trend visualization for acquired smart metering data
- Full support of multilanguage applications
- Powerful script language
- Alarm handling
- User and group access control
- Tag Editor and Tag Database
- Advanced HMI objects: e-mail, RSS feeds, Scheduler, Rotating menu, Video input
- Security and surveillance with IP cameras
- Off-line simulation
- Report printing to USB printer
- Optional IEC 61131-3 Soft PLC (CoDeSys)
- Rich symbol library and project templates

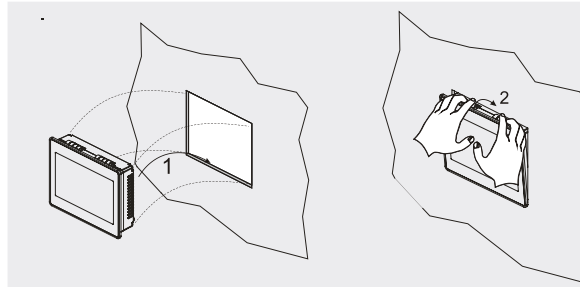


	eBIS504	eBIS507	eBIS510	eBIS513
Display	4.3" TFT 16:9	7" TFT 16:9	10"4 TFT	13"3 TFT 16:9
Resolution	480x272, WQVGA	800x480, WVGA	800x600, SVGA	1280x800, WXGA
Backlight	LED	LED	LED	LED
Brightness	150 cd/m ² typ.	300 Cd/m ² typ.	300 Cd/m ² typ.	300 Cd/m ² typ.
Dimming	Yes	Yes	Yes	Yes
Colors	64K	64K	64K	64K
Touchscreen	Analog resistive	Analog resistive	Analog resistive	Analog resistive
User memory	128 MB Flash	128 MB Flash	128 MB Flash	128 MB Flash
Serial	RS-232, RS-485, RS-422, software configurable	RS-232, RS-485, RS-422, software configurable	RS-232, RS-485, RS-422, software configurable	RS-232, RS-485, RS-422, software configurable
Ethernet	2 10/100 Mbit with integrated Switch	2 10/100 Mbit with integrated Switch	2 10/100 Mbit with integrated Switch	2 10/100 Mbit with integrated Switch
USB	1 Host Interface (v.2.0 and v.1.1)	2 Host Interfaces (1 version 2.0, 1 version 2.0 and 1.1)	2 Host Interfaces (1 version 2.0, 1 version 2.0 and 1.1)	2 Host Interfaces (1 version 2.0, 1 version 2.0 and 1.1)
Vector graphics	Yes, includes SVG support	Yes, includes SVG support	Yes, includes SVG support	Yes, includes SVG support
Object dynamics	Yes. Visibility, opacity, position, size, rotation for most object types.	Yes. Visibility, opacity, position, size, rotation for most object types.	Yes. Visibility, opacity, position, size, rotation for most object types.	Yes. Visibility, opacity, position, size, rotation for most object types.
TrueType fonts	Yes	Yes	Yes	Yes
Alarms	Yes	Yes	Yes	Yes
Historical event list	Yes	Yes	Yes	Yes
Recipes	Yes. Flash memory storage	Yes. Flash memory storage	Yes. Flash memory storage	Yes. Flash memory storage
Password	Yes	Yes	Yes	Yes
Multilanguage	Yes	Yes	Yes	Yes
RTC	Yes, with battery back-up	Yes, with battery back-up	Yes, with battery back-up	Yes, with battery back-up
Battery	Rechargeable Lithium battery	Rechargeable Lithium battery	Rechargeable Lithium battery	Rechargeable Lithium battery
Expansion Slot	1 Optional Plugin	2 Optional Plugin	2 Optional Plugin	2 Optional Plugin
Memory Card	SD Card Slot	SD Card Slot	SD Card Slot	SD Card Slot
Power supply voltage	24 Vdc (18 to 30 Vdc)	24 Vdc (18 to 30 Vdc)	24 Vdc (18 to 30 Vdc)	24 Vdc (18 to 30 Vdc)
Current consumption	0.4A at 24Vdc (max.)	0.7A at 24Vdc (max.)	1A at 24Vdc (max.)	1.2A at 24Vdc (max.)
Operating temperature	5 to 40 °C (vertical installation)	5 to 40 °C (vertical installation)	5 to 40 °C (vertical installation)	5 to 40 °C (vertical installation)
Storage temperature	-20 to +70 °C	-20 to +70 °C	-20 to +70 °C	-20 to +70 °C
Operating and storage humidity	5 – 85 % relative humidity, non-condensing	5 – 85 % relative humidity, non-condensing	5 – 85 % relative humidity, non-condensing	5 – 85 % relative humidity, non-condensing
Weight	Approx 1.0 Kg	Approx 1.0 Kg	Approx 2.1 Kg	Approx 2.8 Kg
Faceplate LxH	147x107 mm (5.78x4.21")	187x147 mm (7.36x5.79")	287x232 mm (11.3x9.13")	336x267 mm (13.22x10.51")
Cutout AxH	136x96 mm (5.35x3.78")	176x136 mm (6.93x5.35")	276x221 mm (10.86x8.70")	326x256 mm (12.83x10.07")
Depth D+T	56 + 4 mm (2.20+0.16")	47+4 mm (1.85+0.16")	56+4 mm (2.20+0.16")	56+4 mm (2.20+0.16")
Protection Class	IP20	IP20	IP20	IP20
Approvals	EN 50090-2-2 + EN 50090-2-2/A1+EN 50090-2-2/A2 Immunity EN 61000-6-1, Emission EN 61000-6-3 for installation in residential environments	EN 50090-2-2 + EN 50090-2-2/A1+EN 50090-2-2/A2 Immunity EN 61000-6-1, Emission EN 61000-6-3 for installation in residential environments	EN 50090-2-2 + EN 50090-2-2/A1+EN 50090-2-2/A2 Immunity EN 61000-6-1, Emission EN 61000-6-3 for installation in residential environments	EN 50090-2-2 + EN 50090-2-2/A1+EN 50090-2-2/A2 Immunity EN 61000-6-1, Emission EN 61000-6-3 for installation in residential environments

PLCM02	Plug-in module for KNX/EIB (TP interface)
PLCM02-CDS	Plug-in module for KNX/EIB (TP interface) +CoDeSys



Mounting into Wall-mount Box - eBIS504-507



Mounting into Wall-mount Box - eBIS510-513

