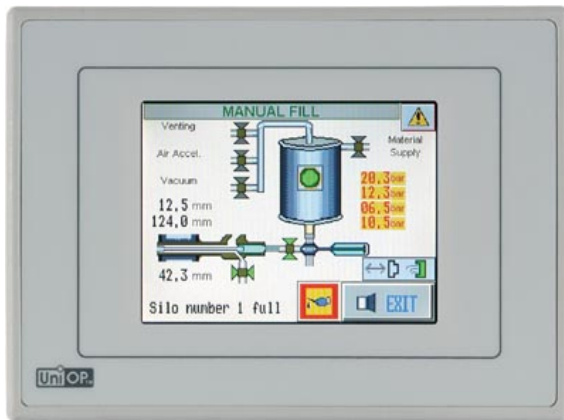


## UniOP eTOP02

The eTOP02 is a compact HMI device with a brilliant TFT display and touchscreen interface. It is the ideal solution for applications where low cost and small size, without compromising performance, are a requirement.



- 3.5" TFT color display
- 256 colors
- 1/4 VGA (320x240 pixel) resolution
- Resistive touchscreen
- 1 MB user memory
- Connection to industrial bus systems and Ethernet (requires optional plug-in modules)

### Highlights

The eTOP02 panel is a compact and low-cost product. It supports the rich common functionalities of the UniOP operator panels:

- Powerful and intuitive programming with the UniOP Designer 6 software
- Support of more than 130 communication drivers for industrial devices
- Optional modules for fieldbus systems (Profibus DP, CANopen, DeviceNet, Interbus) and Ethernet. Ethernet modules allow connection to field devices as well as programming the HMI from Designer.
- Dual-driver communication capability
- Advanced graphic capabilities
- Display dynamic data in numerical, text, bargraph and graphic image formats
- Recipe data storage. Recipe data can be transferred to a host computer using the Ethernet connection.
- Multilanguage applications. The number of runtime languages is limited only by the available memory. All text information in the application can be exported in Unicode format for easier translation.
- Powerful macro editor to configure touchscreen operation
- Alarms and historical alarm list. Alarm and event information can be printed or transferred to a host computer using the Ethernet connection.
- Eight level password protection.
- Report printing to serial printer. Reports are freely configurable using Designer.
- Ethernet-based UniNet network to share data between UniOP HMIs and to serve data using UniNet OPC Server.

**Technical Data**

<b>Display</b>	
Type	TFT
Resolution	¼ VGA, 320x240 pixel
Active display area	3.5" diagonal (71.5x53.6 mm)
Colors	256
Backlight	LED
Brightness	150 cd/m <sup>2</sup> typ.
Dimming	Yes
<b>Memory</b>	
User memory	1 MB internal Flash
User memory expansion	-
<b>Front panel</b>	
Touch screen	Analog resistive
Function keys	-
System keys	-
User LED's	-
System LED's	-
<b>Interfaces</b>	
PC/Printer port	-
PLC port	RS-232, RS-485, RS-422
Aux port (fieldbus and Ethernet)	Yes, with optional modules
DX port (video input)	No
Serial programming speed	9600 – 38400 bps
<b>Functionality</b>	
Vector graphics	No
Dual driver capability	Yes
Video input	No
Data acquisition and trends	No

Recipe memory	32 KB
UniNet network	Client/Server
Alarms	1024
Event list	256
Password	Yes
Hardware RTC	Yes, battery backed
Screen saver	Yes
Buzzer	No
Battery	3 V 270 mA Lithium, non rechargeable, user replaceable, model CR2430. Replace with same component or equivalent compatible with the operating temperature of the product.
<b>Ratings</b>	
Power supply voltage	24 V DC (18 to 30 V DC)
Current rating	0.4 A at 24 VDC
Fuse	Automatic
Weight	Approx 1.0 Kg
<b>Environmental Conditions</b>	
Operating temperature	0 to 50 °C
Storage temperature	-20 to +70 °C
Operating and storage humidity	5 – 85 % RH non-condensing
Protection class	IP65 (front panel)
<b>Dimensions</b>	
Faceplate LxH	149x109 mm (5.86x4.29")
Cutout AxH	136x96 mm (5.35x3.78")
Mounting depth	56 mm (2.40")

The product is designed for installation in industrial environments in compliance with the regulations:

Emitted interference EN 61000-6-4, 2001

Noise immunity EN 61000-6-2, 2001

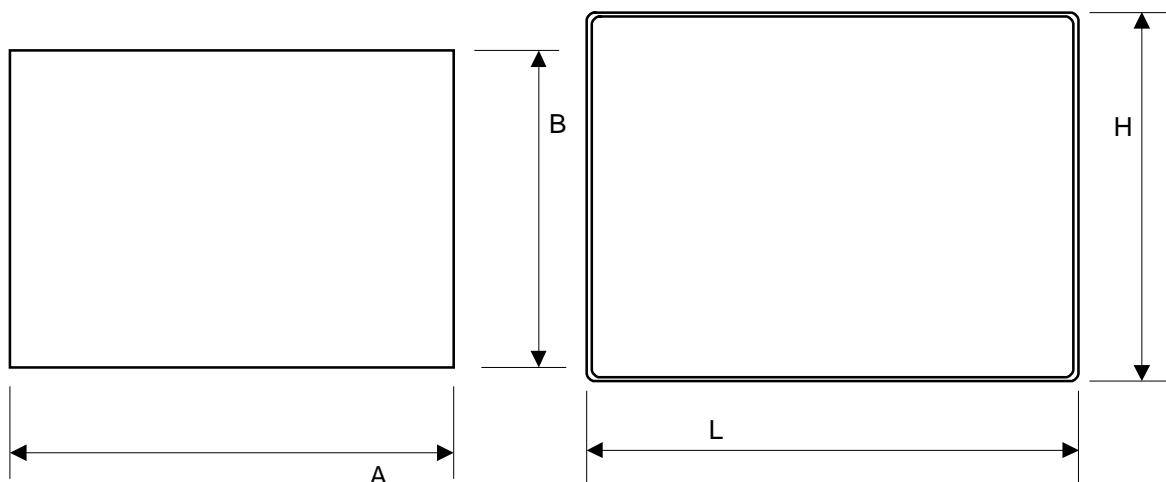


Figure 1 – Cutout and front view

**Ordering Information**

eTOP02-0046  
PROT-07

3.5" 1/4 VGA TFT color panel with touchscreen  
Disposable protection film for 3.5"/3.8" eTOP touch panels (10 pieces)

---

**Tn225**

**Ver. 1.00**

**Copyright © 2006 Sitek S.p.A. – Verona, Italy**

Subject to change without notice

The information contained in this document is provided for informational purposes only. While efforts were made to verify the accuracy of the information contained in this documentation, it is provided "as is" without warranty of any kind.

[www.exor-rd.com](http://www.exor-rd.com)

tn225-0.doc - 3.04.2006  
UniOP eTOP02