

CA88

Date: August 23, 1996

Ref: Ca088-0

Revision: 00

Author:

Cable code	CA88
Description	UniOP PLC Port to Toshiba Prog Port - Current Loop
Type of Communication	Current Loop
Panel Connector	D-sub type 15S
PLC Connector	Fujitsu FCN-361J008
Notes	<i>To be used only with the NEW type of Current Loop interface (-0042). Compatible with M20, M40, EX-100 and EX-250.</i>

table 1. Cable description

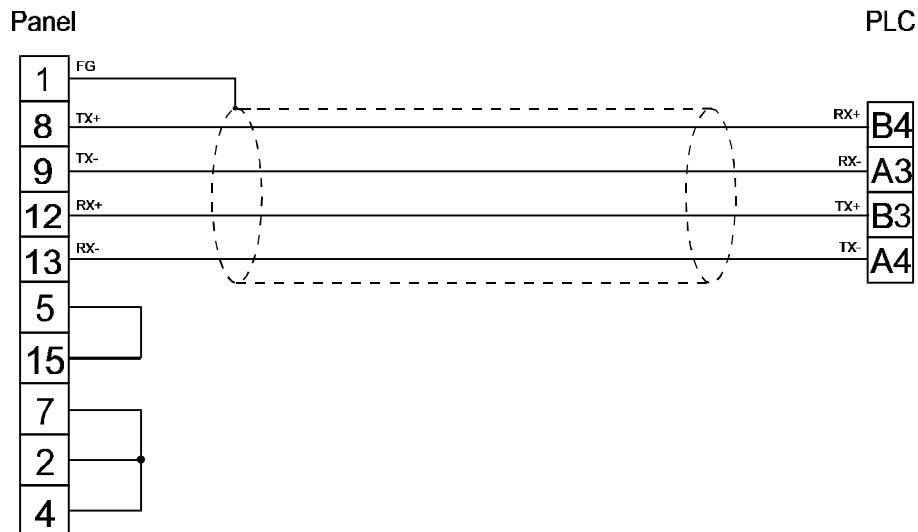


figure 1. Cable diagram