

# ***AGILE***

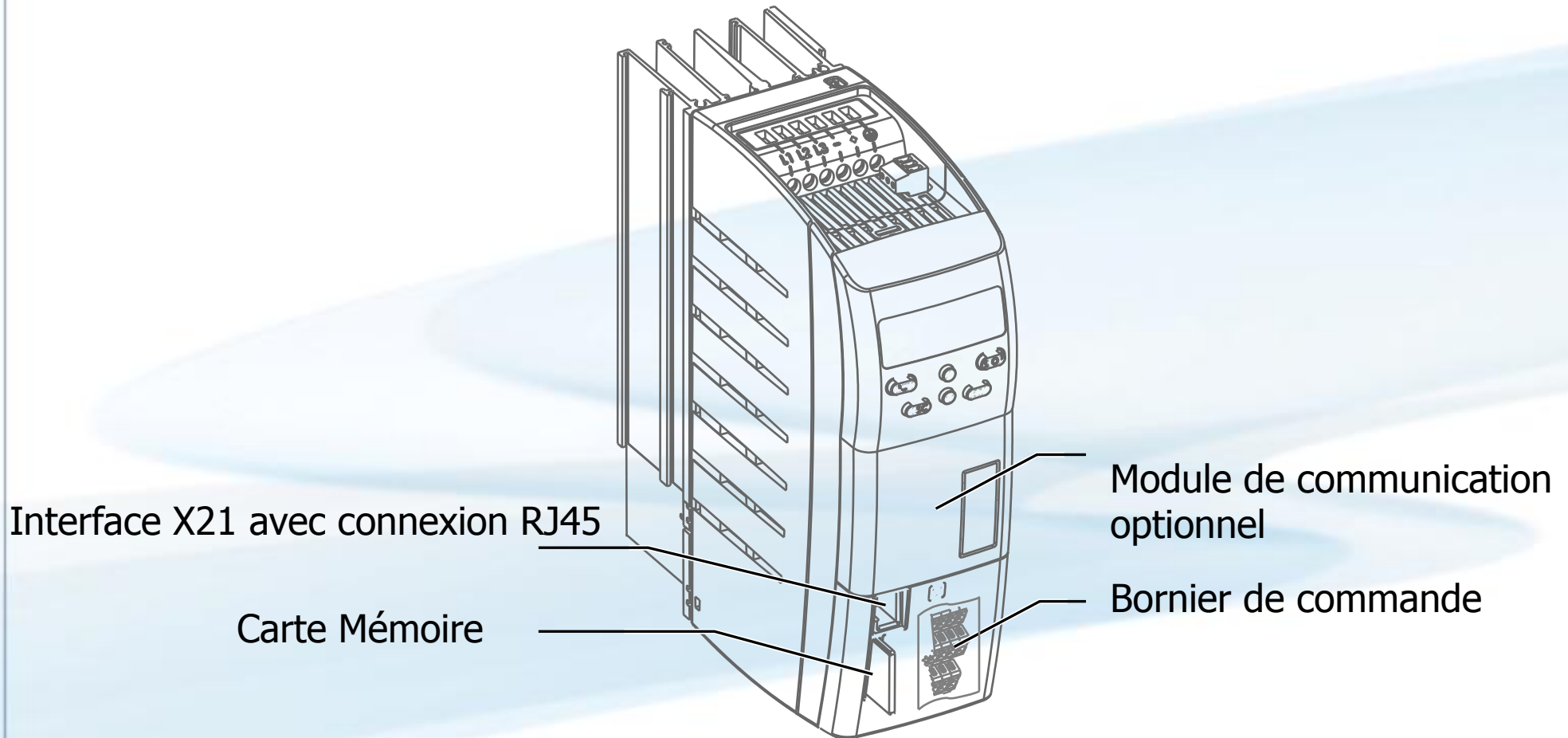
## ***CARACTERISTIQUES MECANIQUES***

- Dimensions
- Possibilités de montage
- Flexibilité
- Options



# Aperçu



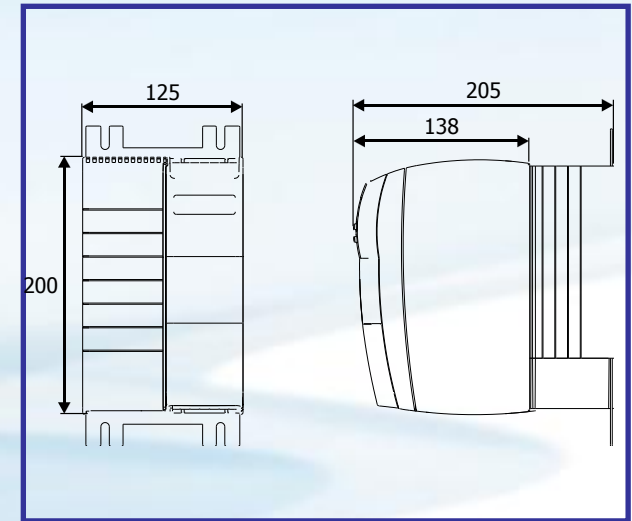
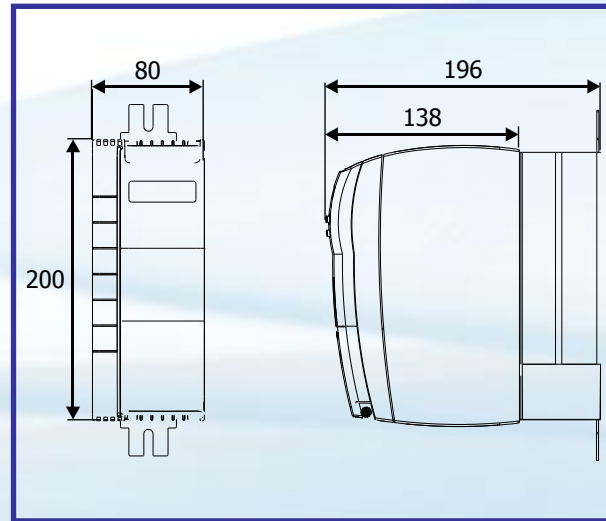
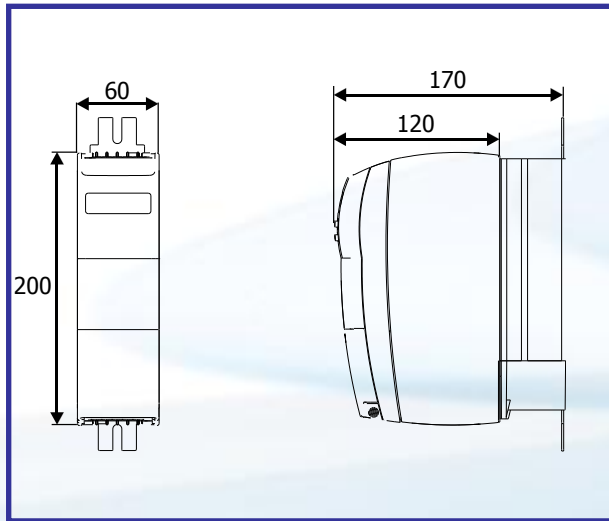


# Dimensions

**Taille 1**

**Taille 2**

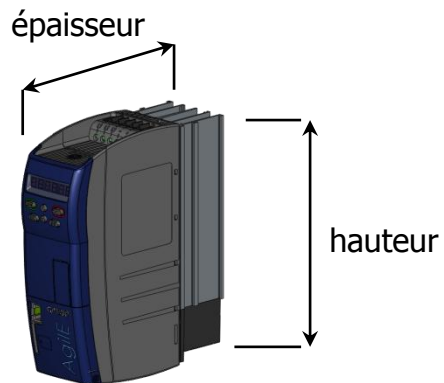
**Taille 3**



**Volume 2,04 l**

**Volume 3,20 l**

**Volume 5,12 l**



# Dimensions

		AGL			ACT		
Taille	Puiss.	dimensions (mm)	volume (l)	semelle (cm <sup>2</sup> )	dimensions (mm)	volume (l)	semelle (cm <sup>2</sup> )
<b>AGL1</b>	<b>0,375 / 2.2kW</b>	L = 60 H = 200 E = 170	<b>2,04</b>	<b>120</b>	L = 60 H = 210 E = 178	<b>2,43</b>	<b>126</b>
<b>AGL2</b>	<b>3,0 / 4,0kW</b>	L = 80 H = 200 E = 200	<b>3,20</b>	<b>160</b>	L = 60 H = 270 E = 178	<b>3,13</b>	<b>162</b>
<b>AGL3</b>	<b>5.5 / 11kW</b>	L = 125 H = 200 E = 205	<b>5,12</b>	<b>250</b>	L = 100 H = 250 E = 200	<b>5,38</b>	<b>250</b>

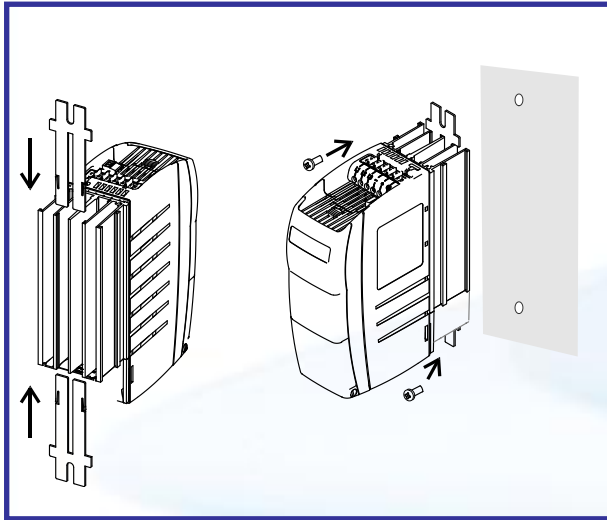


Taille	Standard	Rail DIN	Vibration	Feed-through	ColdPlate
<b>AGL 1</b>	X	<b>X</b>	X	X	X
<b>AGL 2</b>	X		X	X	X
<b>AGL 3</b>	X		X	X	X

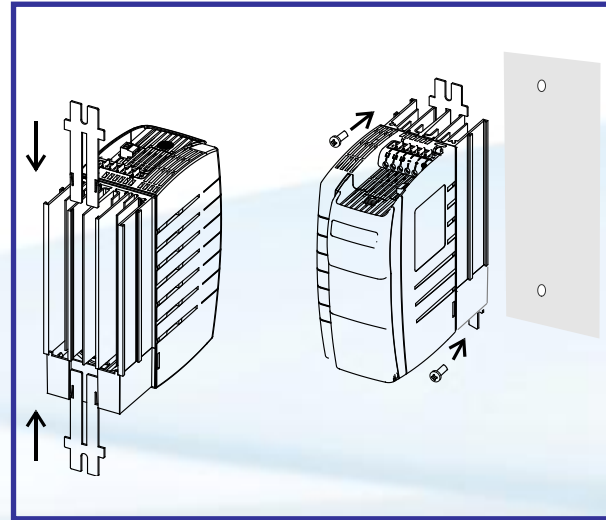


# Montage standard

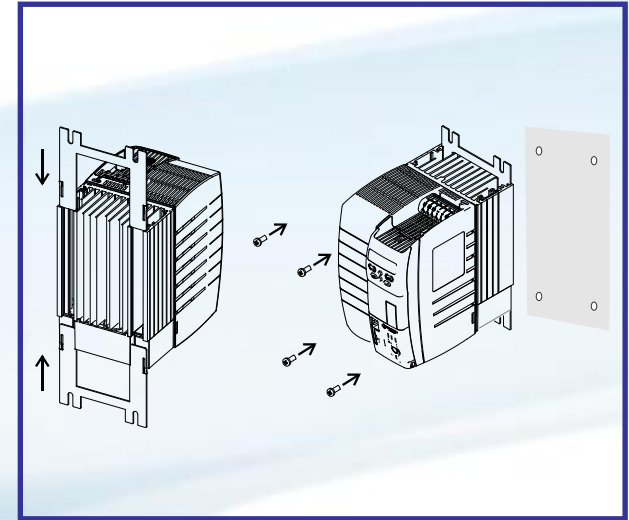
**Taille 1**



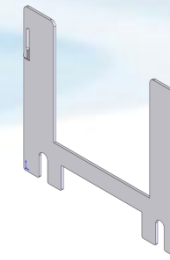
**Taille 2**



**Taille 3**



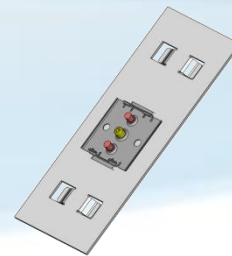
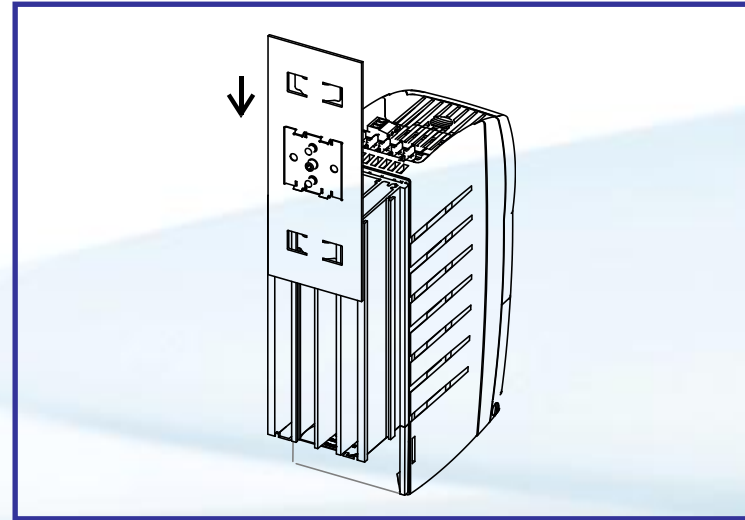
**Similaire à l'ACT1 /2**



**Plus facile que l'ACT 3**

# Montage rail DIN

Taille 1



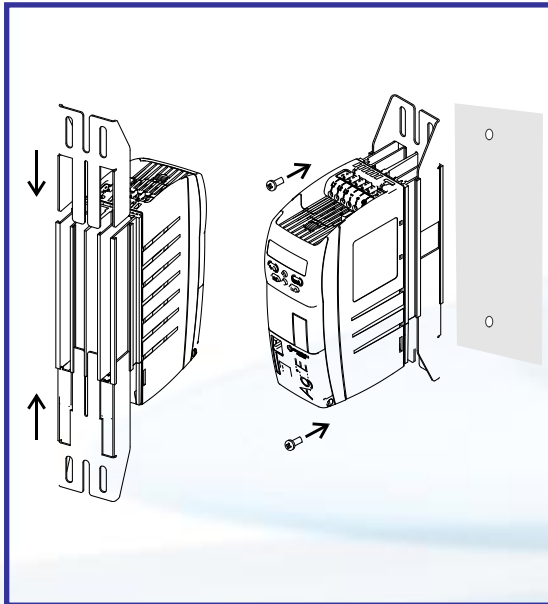
**Plus facile que l'ACT 3**



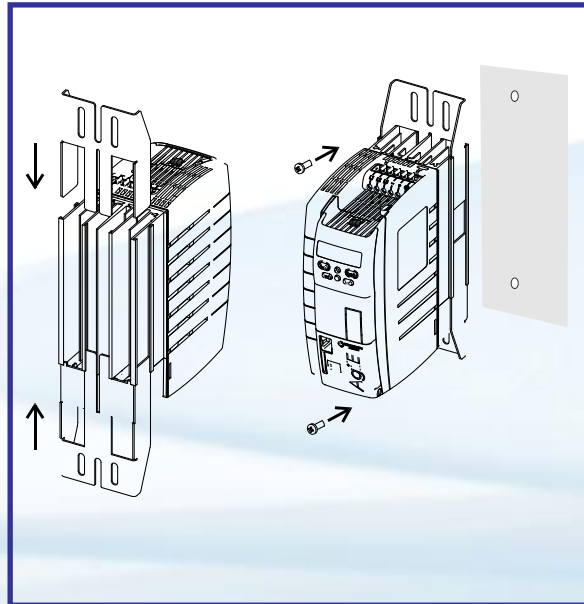


# Montage anti-vibration

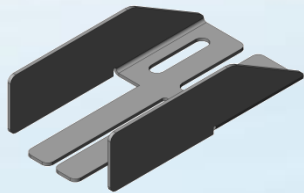
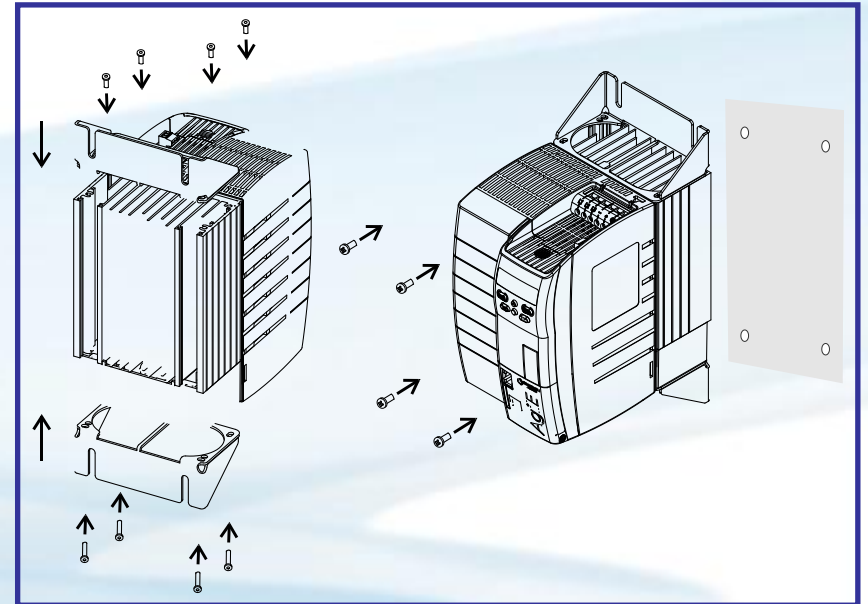
**Taille 1**



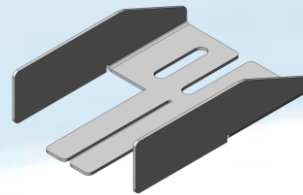
**Taille 2**



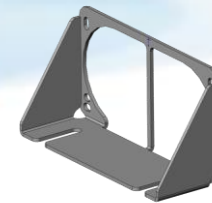
**Taille 3**



**Similaire à l'ACT2**

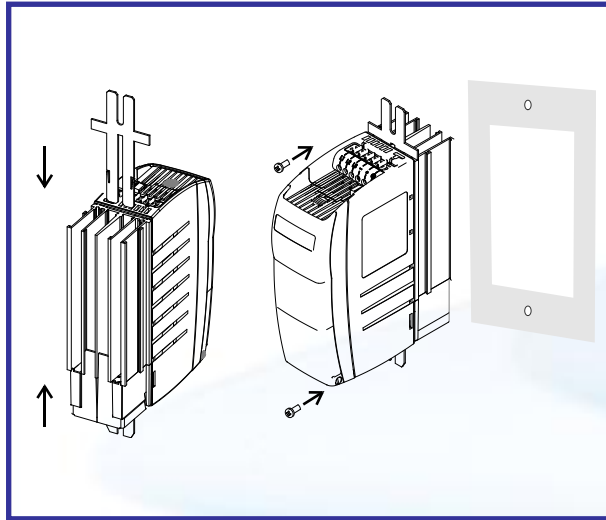


**Similaire à l'ACT3**

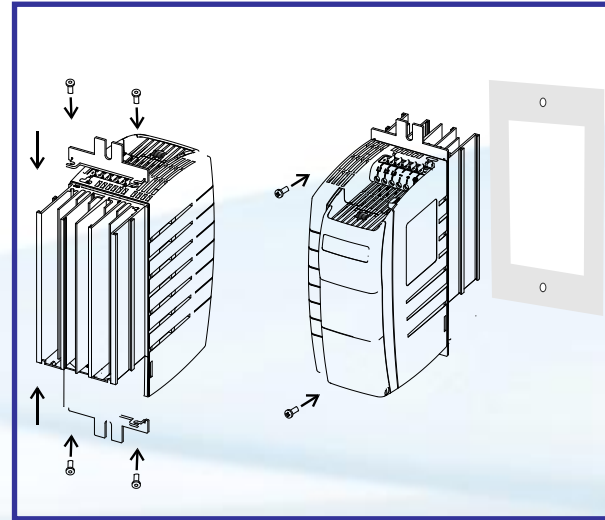


# Montage feed-through

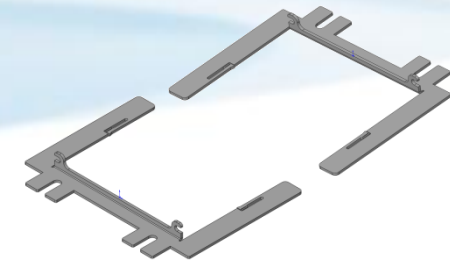
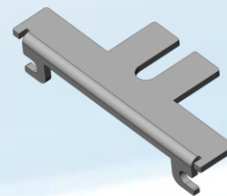
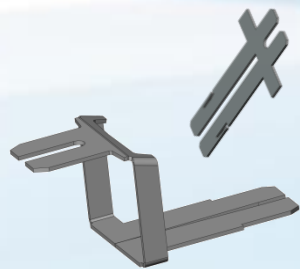
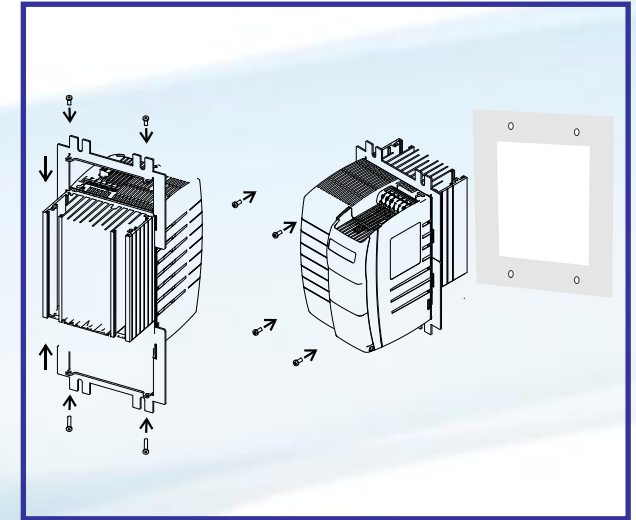
Taille 1



Taille 2

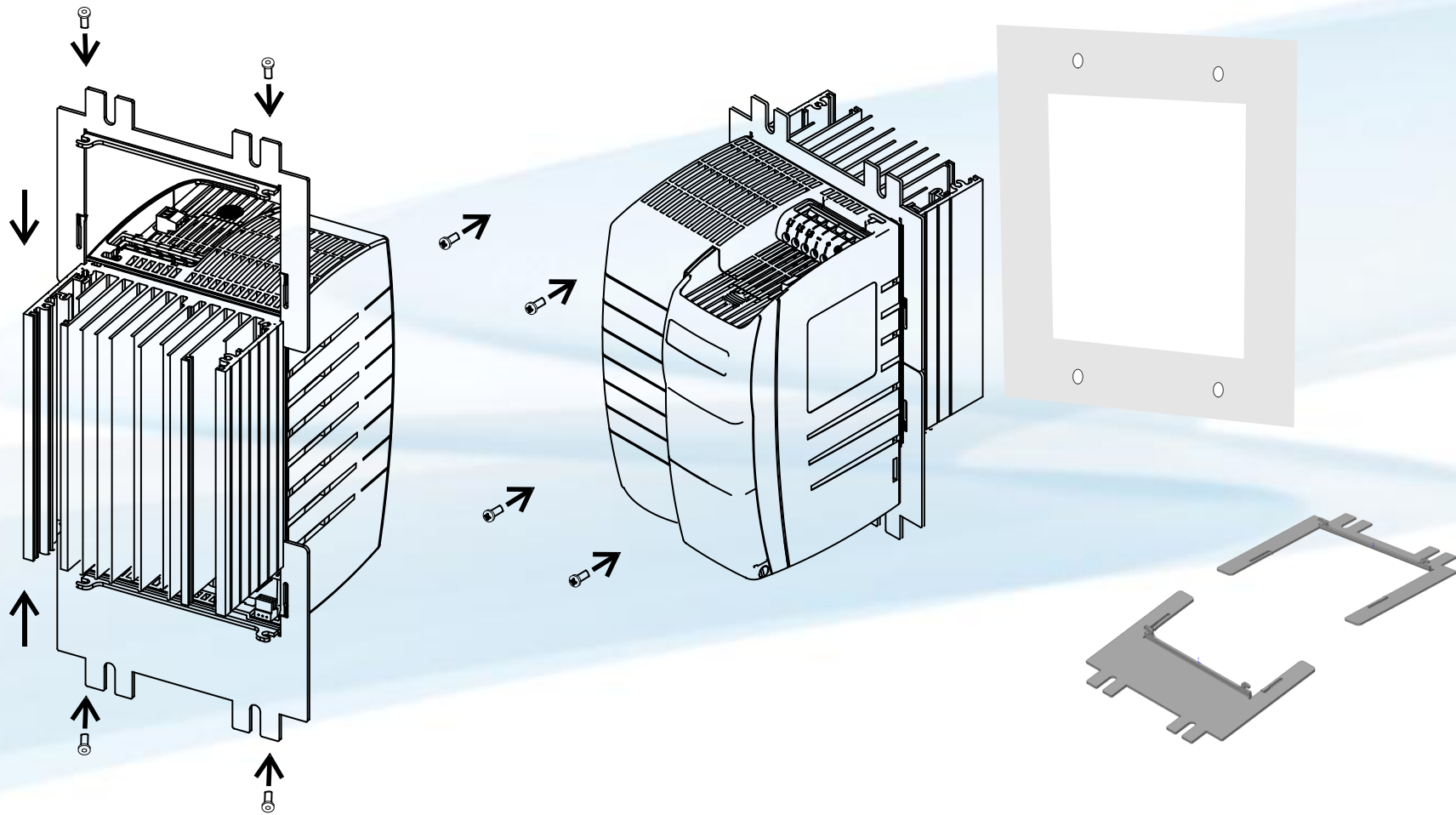


Taille 3



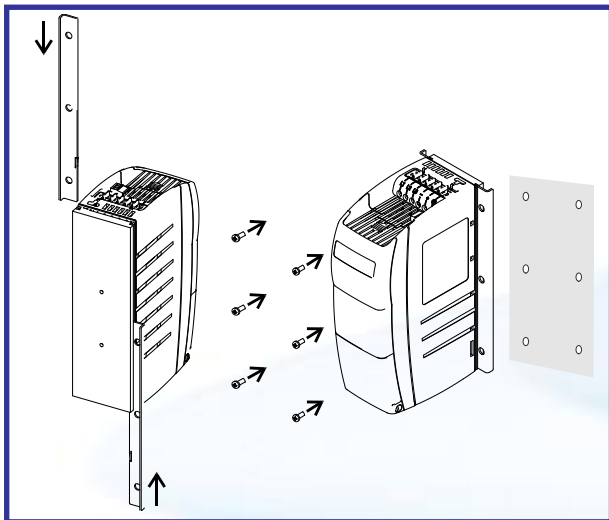
**Similaire à l'ACT2**

## Taille 3 sans ventilateur

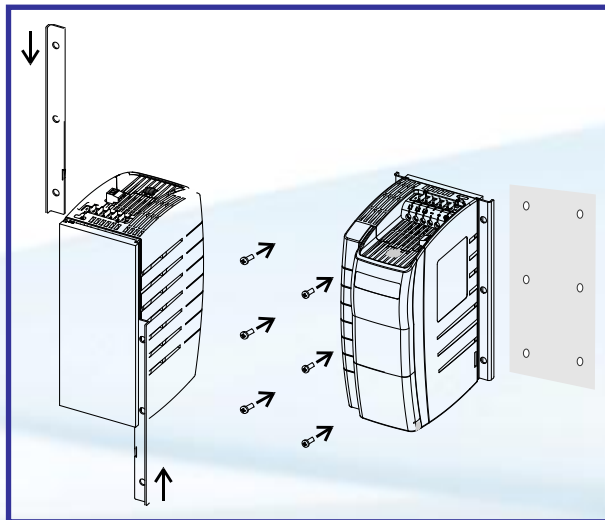


# Montage cold-plate

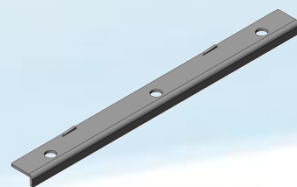
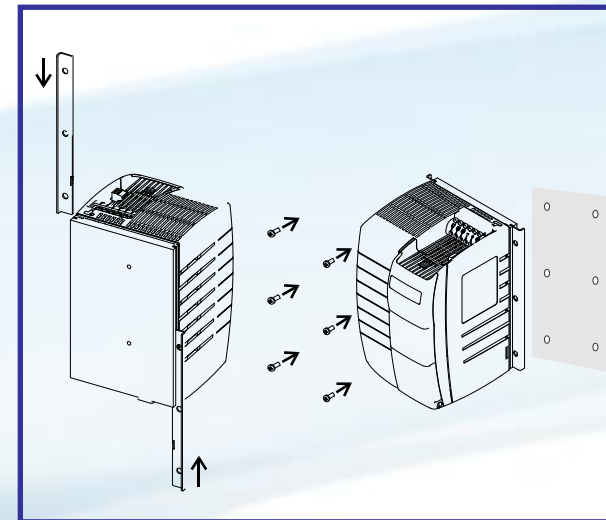
**Taille 1**



**Taille 2**

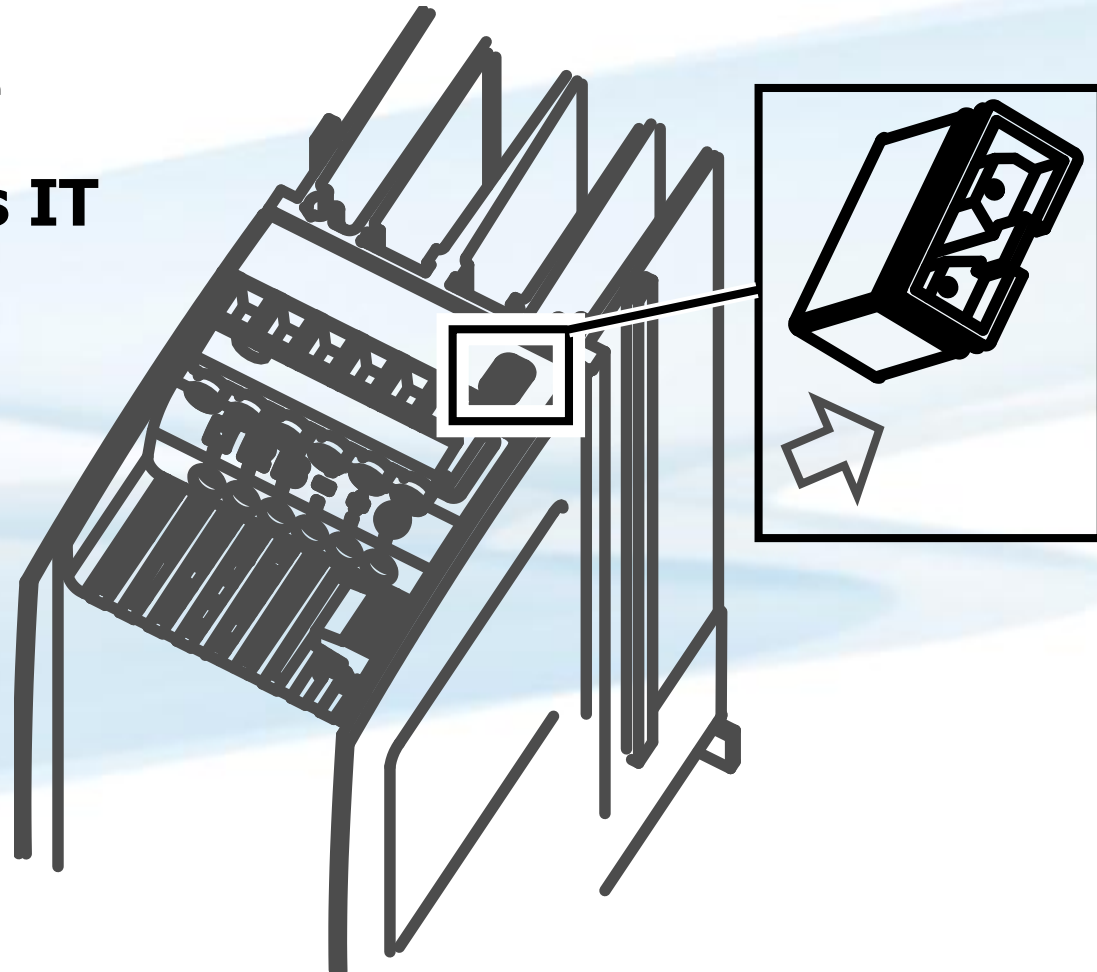


**Taille 3**



**Similaire dans toutes les tailles**

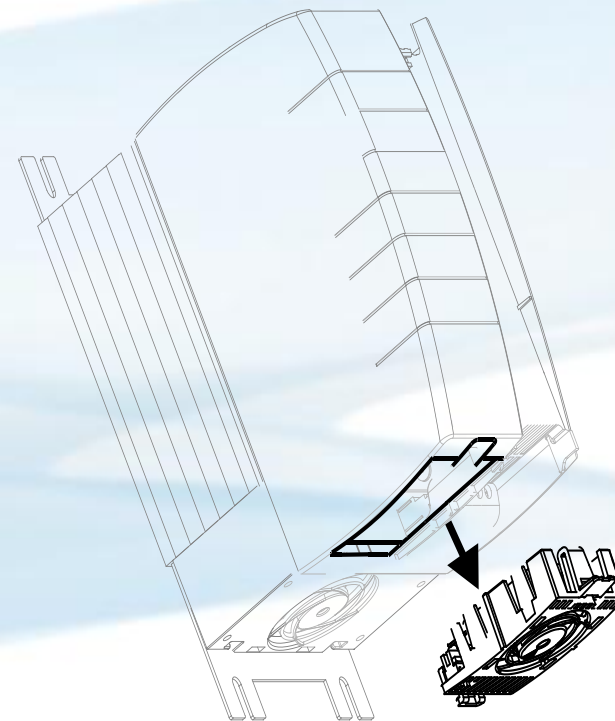
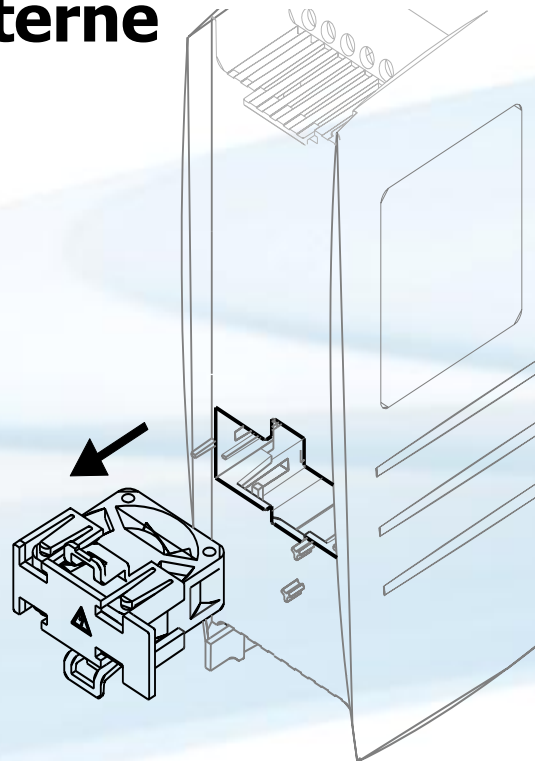
**Cavalier débrochable**  
**Adapté pour les régimes IT**



Taille 2

Taille 3

## Remplacement du ventilateur interne

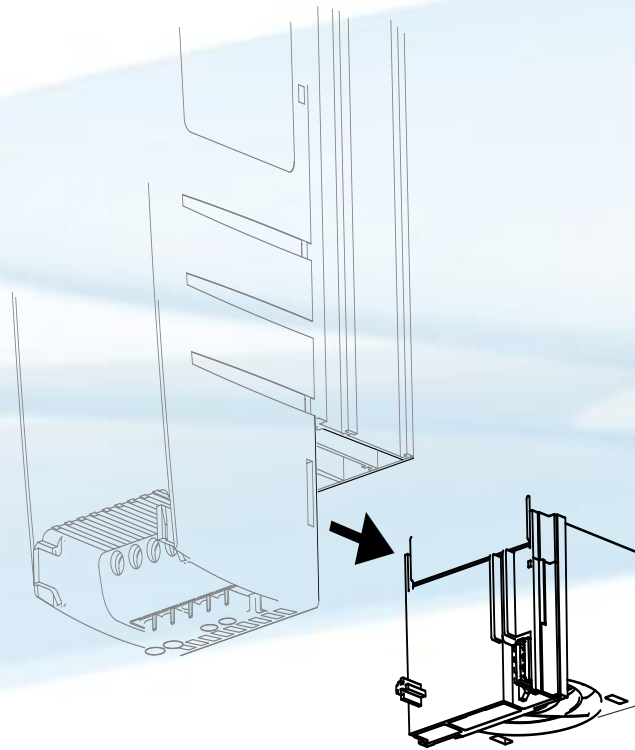


**Note: la taille 1 est sans ventilateur interne.**



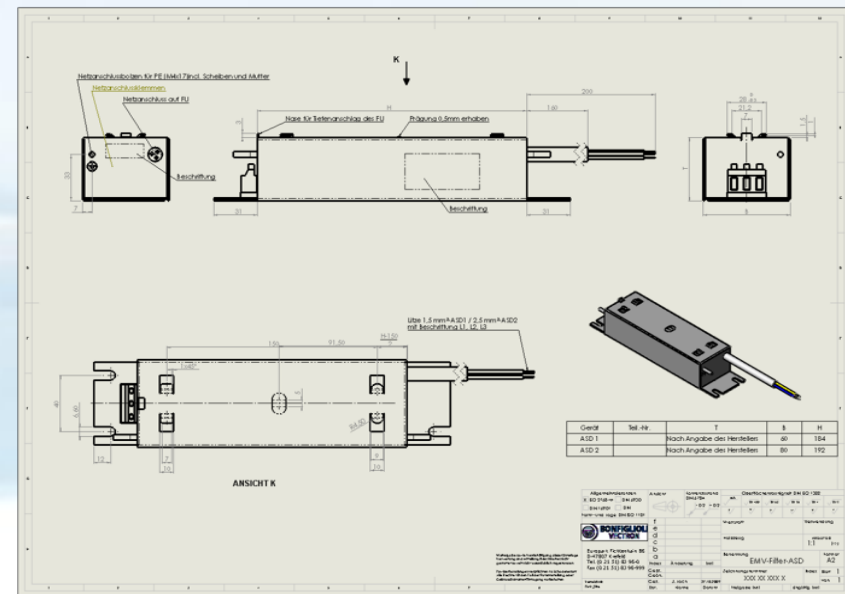
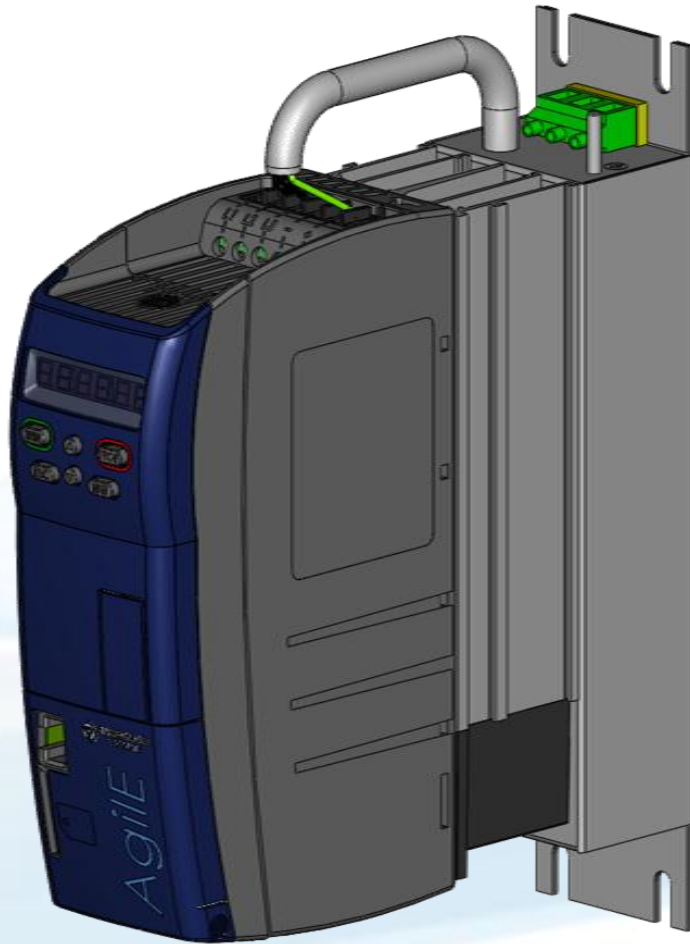
Tailles 1b, 2 et 3

## Remplacement du ventilateur de dissipation de chaleur



**Note: la taille 1a est sans ventilateur d'extraction de chaleur.**





**Filtre arrièrè pour l'Agile tailles 1, 2 et 3**

