

O300.RR-11110444

Reflexions-Lichtschranken

Retro-reflective sensors

Barrières réflex



11110444

Baumer

Baumer Electric AG · CH-8501 Frauenfeld
Phone +41 (0)52 728 1122 · Fax +41 (0)52 728 1144

Canada
Baumer Inc.
CA-Burlington, ON L7M 4B9
Phone +1 (1)905 335-8444

China
Baumer (China) Co., Ltd.
CN-201612 Shanghai
Phone +86 (0)21 6768 7095

Denmark
Baumer A/S
DK-8210 Aarhus V
Phone +45 (0)8931 7611

France
Baumer SAS
FR-74250 Fillinges
Phone +33 (0)450 392 466

Germany
Baumer GmbH
DE-61169 Friedberg
Phone +49 (0)6031 60 07 0

India
Baumer India Private Limited
IN-411038 Pune
Phone +91 20 2528 6833/34

Italy
Baumer Italia S.r.l.
IT-20090 Assago, MI
Phone +39 (0)2 45 70 60 65

Singapore
Baumer (Singapore) Pte. Ltd.
SG-339412 Singapore
Phone +65 6396 4131

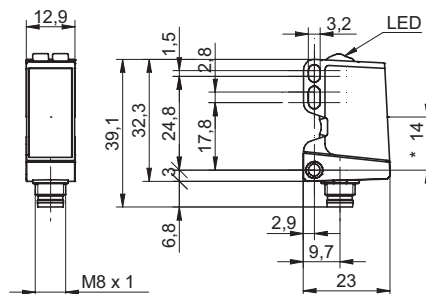
Sweden
Baumer A/S
SE-56133 Huskvara
Phone +46 (0)36 13 94 30

Switzerland
Baumer Electric AG
CH-8501 Frauenfeld
Phone +41 (0)52 728 1313

United Kingdom
Baumer Ltd.
GB-Watchfield, Swindon, SN6 8TZ
Phone +44 (0)1793 783 839

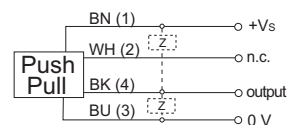
USA
Baumer Ltd.
US-Southington, CT 06489
Phone +1 (1)860 621-2121

Abmessungen Dimensions Dimensions

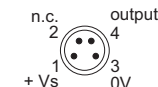


- Alle Masse in mm
- All dimensions in mm
- Toutes les dimensions en mm
- * Senderachse
- * emitter axis
- * axe émetteur

Elektrischer Anschluss Connection diagram Schéma de raccordement



BN = Braun/brown/brun
WH = Weiss/white/blanc
BK = Schwarz/black/noir
BU = Blau/blue/bleu



- Vor dem Anschliessen des Sensors die Anlage spannungsfrei schalten.
- Disconnect power before connecting the sensor.
- Mettre l'installation hors tension avant le raccordement de la cellule optoélectronique.

Technische Daten

Grenzreichweite Sn	5 m
Betriebsreichweite Sb	4 m
Ausrichtung optische Achse	< 2°
Stromaufnahme max. (ohne Last)	30 mA
Betriebsspannungsbereich +Vs	10 ... 30 VDC
Stromaufnahme mittel	30 mA
Spannungsabfall Vd	< 3 VDC
Ansprech- / Abfallzeit	< 0,49 ms
Ausgangsschaltung	Gegentakt
Schaltfunktion	Dunkelschaltung
kurzschlussfest	ja
verpolungsfest	ja
Arbeitstemperatur	-25 ... +60 °C
Schutzart	IP 67

Technical data

nominal range Sn	5 m
actual range Sb	4 m
alignment optical axis	< 2°
current consumption max. (no load)	30 mA
voltage supply range +Vs	10 ... 30 VDC
current consumption typ.	30 mA
voltage drop Vd	< 3 VDC
response time / release time	< 0,49 ms
output circuit	push-pull
output function	dark operate
short circuit protection	yes
reverse polarity protection	yes
operating temperature	-25 ... +60 °C
protection class	IP 67

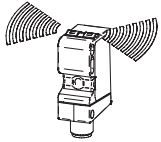
Données techniques

Limite de portée Sn	5 m
Portée de service Sb	4 m
Axe d'alignement optique	< 2°
Consommation max. (sans charge)	30 mA
Plage de tension +Vs	10 ... 30 VDC
Courant absorbé moyen	30 mA
Tension résiduelle Vd	< 3 VDC
Temps d'activation / désactivation	< 0,49 ms
Circuit de sortie	push-pull
Fonction de commutation	sombre
Protégé contre courts-circuits	oui
Protégé contre inversion polarité	oui
Température de fonctionnement	-25 ... +60 °C
Classe de protection	IP 67

O300.RR-11110444

Farben LED Colors LED Couleurs LED

gelb
yellow
jaune



grün
green
vert

LED Anzeigen LED indication Indication LED

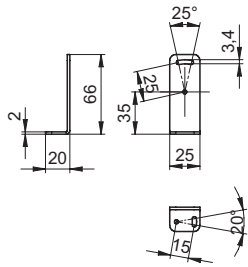
Grün: Betriebsanzeige, Kurzschluss
Gelb: Lichtempfang

Green: Operating indication, short circuit
Yellow: Light reception

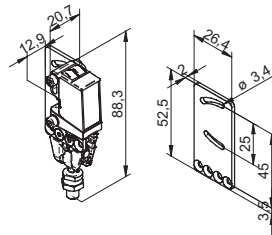
Vert: Signalisation de service, court-circuit
Jaune: Réception de lumière

Zubehör Accessories Accessoires

Montagewinkel
Mounting bracket
Support de montage
Art. No: 11102423



Sensofix O300
Sensofix O300
Sensofix O300
Art. No: 11104963



Montage Mounting Montage

