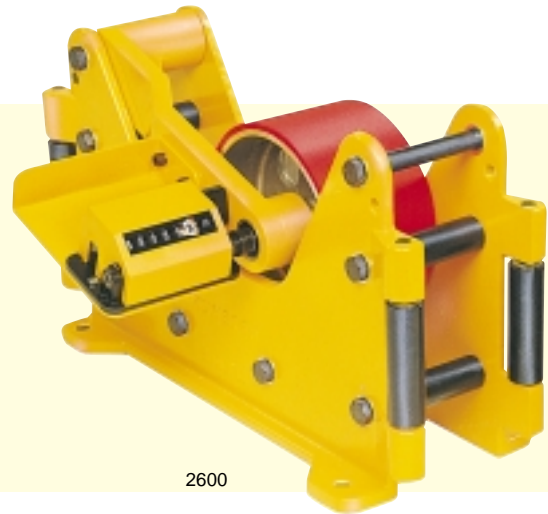


Heavy duty, multi-purpose measuring machine which accepts materials up to 76mm (3.0in) diameter and has a side-opening option



2600

This is a heavy duty machine which measures the length of cable, wire, rope, hose, extrusions, or continuous strip from 6mm (0.24in) to 76mm (3.0in) diameter. Optionally this robust multi-purpose measuring machine is available with one side opening so avoiding the need to have access to the ends of the cable to start and finish measuring.

- **Measures up to 76mm (3.0in) diameter cable.**
- **Heavy duty cast aluminium structure with integral mounting flanges.**
- **Totalising or predetermining counters available or encoder to pulse electronic counters.**
- **Can be interfaced to a data processing system.**
- **Can be supplied with mobile adjustable stand.**
- **Additional counter or encoder can be fitted to keep a total while the main counter is reset.**
- **Side opening model available as an option.**

The pivot arm, also available separately, carries the 500mm circumference precision ground measuring wheel. The shaft that supports the measuring wheel revolves in a double ball race which is mounted in

the pivot arm. A choice of polyurethane covered, knurled or plain aluminium measuring wheels is available.

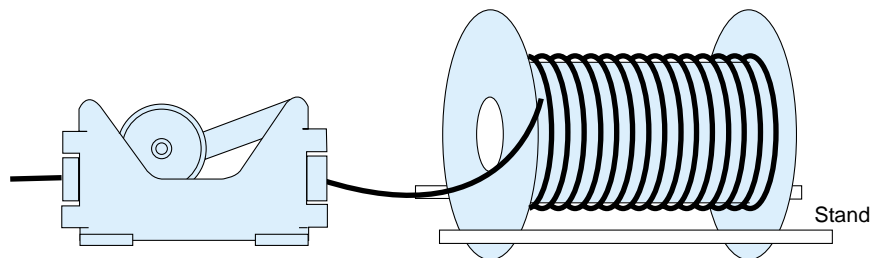
Any of the standard duty 3000 series mechanical revolution counters or shaft encoders described in section 1 of this catalogue can be fitted to this machine (listed specifically in the specification). If a shaft encoder is fitted, the output can be directed to any type of counter with an electronic input.

The optional stand (adjustable from 800 to 1215mm in height) enables the machine to be moved from one measuring station to another quickly and effortlessly. The castors are fitted with quick release brakes.

Typical Applications

- *Cable manufacture
- *Batching of rope for distribution on reels
- *Maritime use in heavy cable laying operations
- **"In-situ" measurement of cable length where access to a free end is not available.

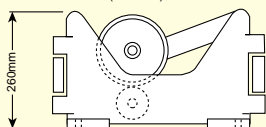
Cable Measurement



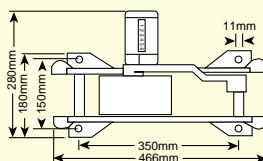
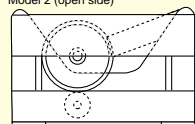
Dimensions

146mm(W) x 195mm(H) x 170mm(D)

Model 1 (standard)



Model 2 (open side)



Specification

Cable Diameter Range

6mm (0.24in) - 76mm (2.99in)

Measuring Wheel Circumference

500mm

Maximum Speed of Travel

1500 metres/min or 3000 counts/min whichever is lower

Units of Measurement Available

Metres and centimetres, yards and eighths, or feet and inches

Counters Available for Direct Connection

3001, 3002 or 8812 shaft encoders. Other counters may be available to special order

Packed Dimensions

53mm (2.09in) x 33mm (1.30in) x 33mm (1.30in)

Gross Weight

20.0kg (44.0lb)

Ordering Information

See page 10.13 for ordering information

Note

Where 3001 or 3002 counters are specified with centimetres this is indicated on the right hand figure wheel as below

