

italian
quality



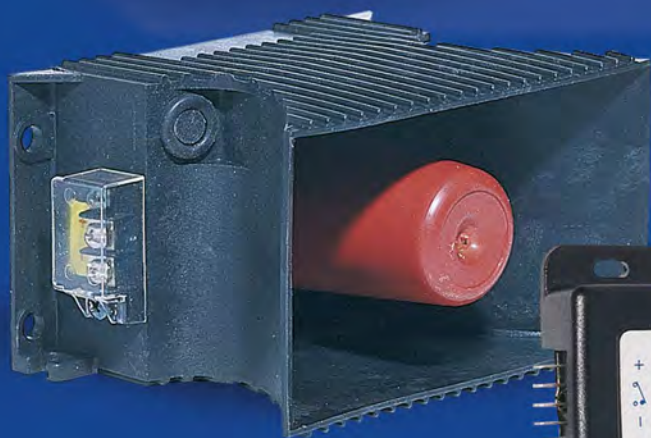
Made in Italy

Industria
Leader

 **SIRENA** S.p.A.

**Prodotti
per carrelli
elevatori**

**Products
for forklift
trucks**



Indice

Index

Prodotti per carrelli elevatori Products for forklift trucks

Luci xeno multitemensione Multi-voltage xenon flashing beacons

310-312



ELEBLITZ 10÷100V 1F FLASH ELEV 10÷100V 1F-2F



FLC 1200 10÷100V 1F FLT ELEV 10÷100V 1F MICROROT ISO B ELEV 10÷100V 1F



MINIFRESNEL ISO B ELEV 10÷100V 1F MINITRUCK 120 10÷100V 1F SFEROFLASH 10÷100V 1F



FLASH ELEV SL 10÷100V 1F-2F MICROROT ISO B ELEV SL 10÷100V 1F



MINIFRESNEL ISO B ELEV SL 10÷100V 1F

Avisatori acustici multitemensione Multi-voltage back-up alarms

313-314



RES 10÷100V RETRO ALLARM 10÷100V



SEN 10÷100V BACK-UP ALARM SLOW
BACK-UP ALARM FAST



BACK-UP ALARM V36L1 SVAR 10÷100V





Prodotti per carrelli elevatori . Products for forklift trucks

Prodotti per carrelli elevatori

Products for forklift trucks

V 10÷100		V 20÷80		Flash/min. 1F: 60÷130	2F: 2x75±10	IP 54
°C -30 +40	On		2	PC	autoestinguente self-extinguishing	

Luce xeno multitensione - monolampo Multi-voltage xenon flashing beacon - single flash

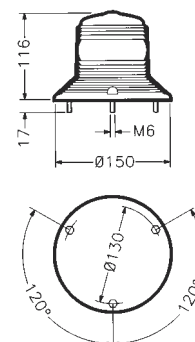


ELEBLITZ 10÷100V 1F
ELEBLITZ1F10100

①

1F	V	10 ÷ 24 ÷ 48 ÷ 80 ÷ 100				
	mA	270	190	110	75	60
	Cd(p)	650	950	830	870	970
	V	20 ÷ 48 ÷ 80				
	mA	240	280	240		
	Cd(p)	800	880	950		

ELEBLITZ1F10100D2 ● 84561



Kg 0,36

Luce xeno multitensione - monolampo o bilampo Multi-voltage xenon flashing beacon - single or double flash

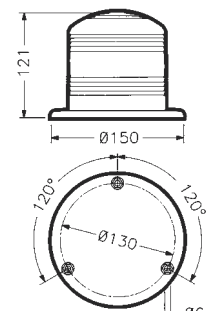


FLASH ELEV 10÷100V 1F-2F
FLELB1F10100

①

1F	V	10 ÷ 24 ÷ 48 ÷ 80 ÷ 100				
	mA	270	190	110	75	60
	Cd(p)	1000	1450	1500	1550	1600
	V	20 ÷ 48 ÷ 80				
	mA	240	280	240		
	Cd(p)	800	1050	1100		
2F	V	10 ÷ 100				
	mA	220 ÷ 50				
	Cd(p)	900 750				

FLELB1F10100D2 ● 84524
FLELB2F10100D2 ● 84583



Kg 0,45

Luce xeno multitensione - monolampo Multi-voltage xenon flashing beacon - single flash

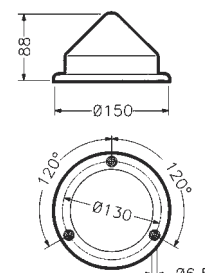


FLC 1200 10÷100V 1F
FLC12001F10100

①

1F	V	10 ÷ 24 ÷ 48 ÷ 80 ÷ 100				
	mA	270	190	110	75	60
	Cd(p)	950	1650	1650	1650	1700
	V	20 ÷ 48 ÷ 80				
	mA	240	280	240		
	Cd(p)	800	910	1000		

FLC12001F10100D2 ● 84567



Kg 0,23

Luce xeno multitensione - monolampo Multi-voltage xenon flashing beacon - single flash

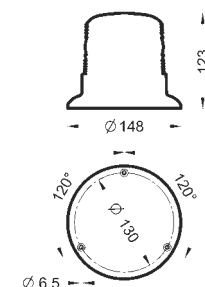


FLT ELEV 10÷100V 1F
FLTELEV1FL10100

①

1F	V	10 ÷ 24 ÷ 48 ÷ 80 ÷ 100				
	mA	270	190	110	75	60
	Cd(p)	1000	1450	1500	1550	1600
	V	20 ÷ 48 ÷ 80				
	mA	240	280	240		
	Cd(p)	1350	1400	1450		

FLTELEV1FL10100V ● 84608



Kg 0,35

Prodotti per carrelli elevatori

Products for forklift trucks

V 10÷100		V 20÷80		Flash/min. 1F: 60÷130	IP 54
°C -30 +40		On		2 PC	autoestinguente self-extinguishing

Luce xeno multitemensione - monolampo Multi-voltage xenon flashing beacon - single flash

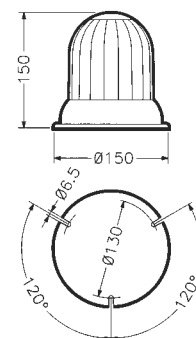


MICRODOT ISO B ELEV
10÷100V 1F
MRTISOBEL10100

ⓑ

1F	V	10 ÷ 24 ÷ 48 ÷ 80 ÷ 100				
	mA	270	190	110	75	60
	Cd(p)	550	920	940	940	960
	V	20 ÷ 48 ÷ 80				
	mA	240	280	240		
	Cd(p)	850	910	1000		

MRTISOBEL10100D2 ● 84547



Kg 0,42

Luce xeno multitemensione - monolampo Multi-voltage xenon flashing beacon - single flash

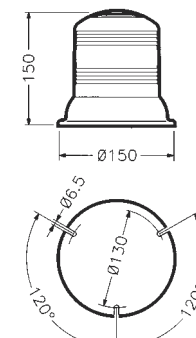


MINIFRESNEL ISO B ELEV
10÷100V 1F
MFRISOBEL1F10100

ⓑ

1F	V	10 ÷ 24 ÷ 48 ÷ 80 ÷ 100				
	mA	270	190	110	75	60
	Cd(p)	650	1130	1130	1130	1130
	V	20 ÷ 48 ÷ 80				
	mA	240	280	240		
	Cd(p)	800	1050	1100		

MFRISOBEL1F10100D2 ● 84582



Kg 0,43

Luce xeno multitemensione - monolampo Multi-voltage xenon flashing beacon - single flash

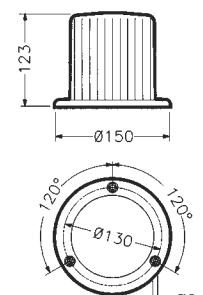


MINITRUCK 120
10÷100V 1F
MTRUCK1201F10100

ⓐ

1F	V	10 ÷ 24 ÷ 48 ÷ 80 ÷ 100				
	mA	270	190	110	75	60
	Cd(p)	650	850	950	970	970
	V	20 ÷ 48 ÷ 80				
	mA	240	280	240		
	Cd(p)	800	960	985		

MTRUCK1201F10100D2 ● 84628



Kg 0,38

Luce xeno multitemensione - monolampo Multi-voltage xenon flashing beacon - single flash

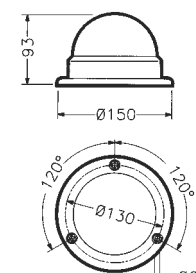


SFEROFLASH
10÷100V 1F
SFERO1F10100

ⓐ

1F	V	10 ÷ 24 ÷ 48 ÷ 80 ÷ 100				
	mA	270	190	110	75	60
	Cd(p)	850	1150	1300	1500	1500
	V	20 ÷ 48 ÷ 80				
	mA	240	280	240		
	Cd(p)	1300	1350	1400		

SFERO1F10100D2 ● 84546



Kg 0,26

Prodotti per carrelli elevatori

Products for forklift trucks

V 10÷100		V 20÷80		Flash/min. 1F: 60÷130	2F: 2x75±10	IP 20
SL:		°C -30 +40	On		2	PC

Luce xeno multitemperatura - monolampo o bilampo - con segnale acustico incorporato

Multi-voltage xenon flashing beacon - single or double flash - with built-in audible signal

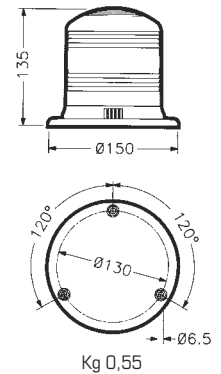


FLASH ELEV SL
10÷100V 1F-2F
FLELSL1F10100

①

1F	V	mA	Cd(p)	dB(A)1m	Hz	2F	V	mA	Cd(p)	dB(A)1m	Hz
	10 ÷ 100	220 ± 50	1800	75 ÷ 85	2500 ± 100		10 ÷ 100	220 ± 50	900 750	75 ÷ 85	2500 ± 100

FLELSL1F10100D2 ● 84514
FLELSL2F10100D2 ● 84584



Luce xeno multitemperatura - monolampo - con segnale acustico incorporato

Multi-voltage xenon flashing beacon - single flash - with built-in audible signal

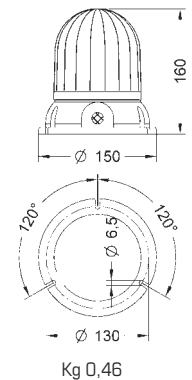


MICROROT ISO B ELEV SL
10÷100V 1F
MRTISOBELSL1F10100

⑧

1F	V	mA	Cd(p)	dB(A)1m	Hz
	10 ÷ 100	220 ± 50	1000	75 ÷ 85	2500 ± 100

MRTISOBELSL1F10100D2 ● 84575



Luce xeno multitemperatura - monolampo con segnale acustico incorporato

Multi-voltage xenon flashing beacon - single flash - with built-in audible signal

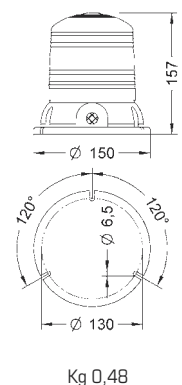


MINIFRESNEL ISO B ELEV SL
10÷100V 1F
MFRISOBELSL1F10100

⑧

1F	V	mA	Cd(p)	dB(A)1m	Hz
	10 ÷ 100	220 ± 50	1800	75 ÷ 85	2500 ± 100

MFRISOBELSL1F10100D2 ● 24841



Prodotti per carrelli elevatori

Products for forklift trucks

V 10÷100	===	On ∞	IP 54	🎵 ---	°C -30 +50	autoestinguente self-extinguishing
----------	-----	------	-------	-------	------------	---------------------------------------

Avvisatore acustico multitemperatura di retromarcia Multi-voltage back-up alarm

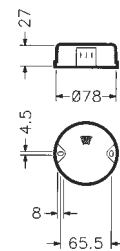


RES 10÷100V*
RES10100

16

V ===	10 ÷ 100
mA	24 ÷ 12
dB(A)1m	92
dB(A)1m	82
Hz	2500

RES10100 52342



Kg 0,17

Avvisatore acustico multitemperatura di retromarcia Multi-voltage back-up alarm

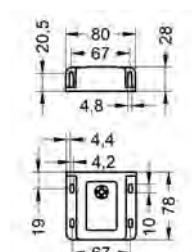


RETO ALLARM
10÷100V* 1F
RTA10100

16

V ===	10 ÷ 100
mA	24 ÷ 12
dB(A)1m	92
dB(A)1m	82
Hz	2500

RTA10100 52331



Kg 0,19

Avvisatore acustico multitemperatura di retromarcia Multi-voltage back-up alarm

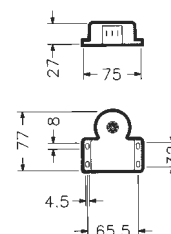


SEN 10÷100V*
SEN10100

16

V ===	10 ÷ 100
mA	24 ÷ 12
dB(A)1m	92
dB(A)1m	82
Hz	2500

SEN10100 52343



Kg 0,13

* I dati in dB sono relativi al prodotto alimentato con 24V CC
* The dB data refers to products supplied in 24V DC

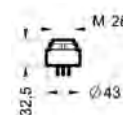
V 6÷28 12÷48	===	On ∞	IP 54 55	🎵 — ---	°C -30 +50
-----------------	-----	------	-------------	---------	------------



BACK-UP ALARM SLOW
BACK-UP ALARM FAST

SLOW		FAST	
V ===	6 ÷ 28	V ===	6 ÷ 28
mA	2,5 ÷ 40	mA	2,5 ÷ 25
dB(A)1m	85 ÷ 99	dB(A)1m	85 ÷ 99
Hz	2900	Hz	2900
🎵 ---	30 p/m	🎵 ---	160 p/m

BACK-UP ALARM SLOW PULSE 6÷28V 52346
BACK-UP ALARM FAST PULSE 6÷28V 52345



Kg 0,04

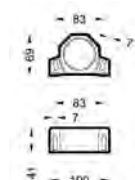
IP 55



BACK-UP ALARM V36L1

V36L1	
V ===	6 ÷ 28
mA	175 ÷ 215
dB(A)1m	93.5
Hz	1300(±100)
🎵 ---	80 p/m

BACK-UP ALARM V36L1 12÷48V BIS 52348



Kg 0,29

Prodotti per carrelli elevatori

Products for forklift trucks

V 10÷100

≡≡≡

On ∞

IP 55

♪ ---

°C -30 +50

autoestinguente
self-extinguishing

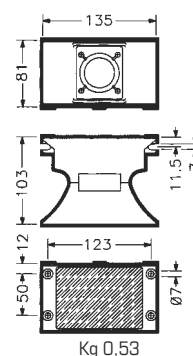
Avvisatore acustico multitemperatura di retromarcia con intensità suono autoregolabile in base alla rumorosità ambientale
Multi-voltage back-up alarm with self-adjustable sound intensity depending on ambient noise



SVAR 10÷100V
SVAR10100
 (16 21)

V ≡≡≡	10 ÷ 100
mA	480 ÷ 50
dB(A)1m	88 ▲ 110
Hz	2500 (±100)

SVAR10100 52335



Prodotti per carrelli elevatori . Products for forklift trucks

