

# New Safety Switches



## New Safety System RE4000



# New Safety Switches

# SICK

**NEW**

## Safety Sensor RE 4000

### Application

- ➔ Non-contact safeguarding of protective devices

### Technical Highlights - Customer Benefits

- ➔ Category 4 according to EN954-1
- ➔ 2-6 Sensors to one evaluation unit ➔ saves additional relays
- ➔ LED status control per channel ➔ visuell door monitoring
- ➔ External Device Monitoring (EDM)
- ➔ 3 safe output contacts and 1 signal contact
- ➔ Delayed safety output\*

\*Only Cat3 with connected delayed output

Magnetical coded

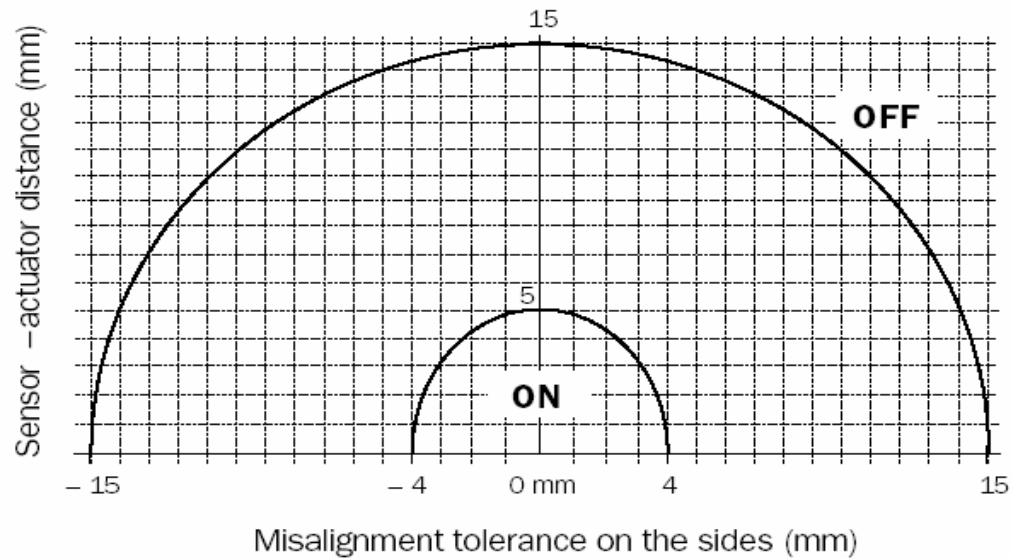
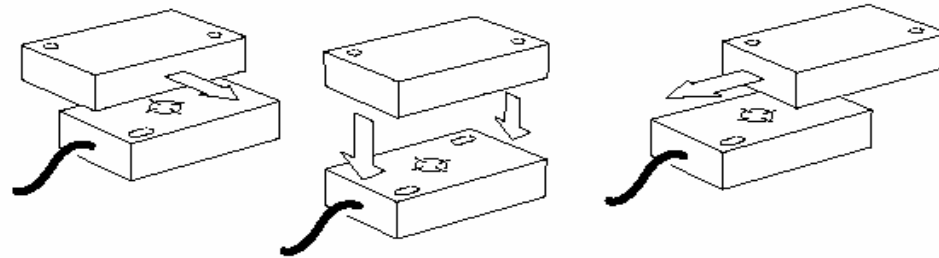


# New Safety Switches



## Safety Sensor RE 4000

### Operating range of sensor

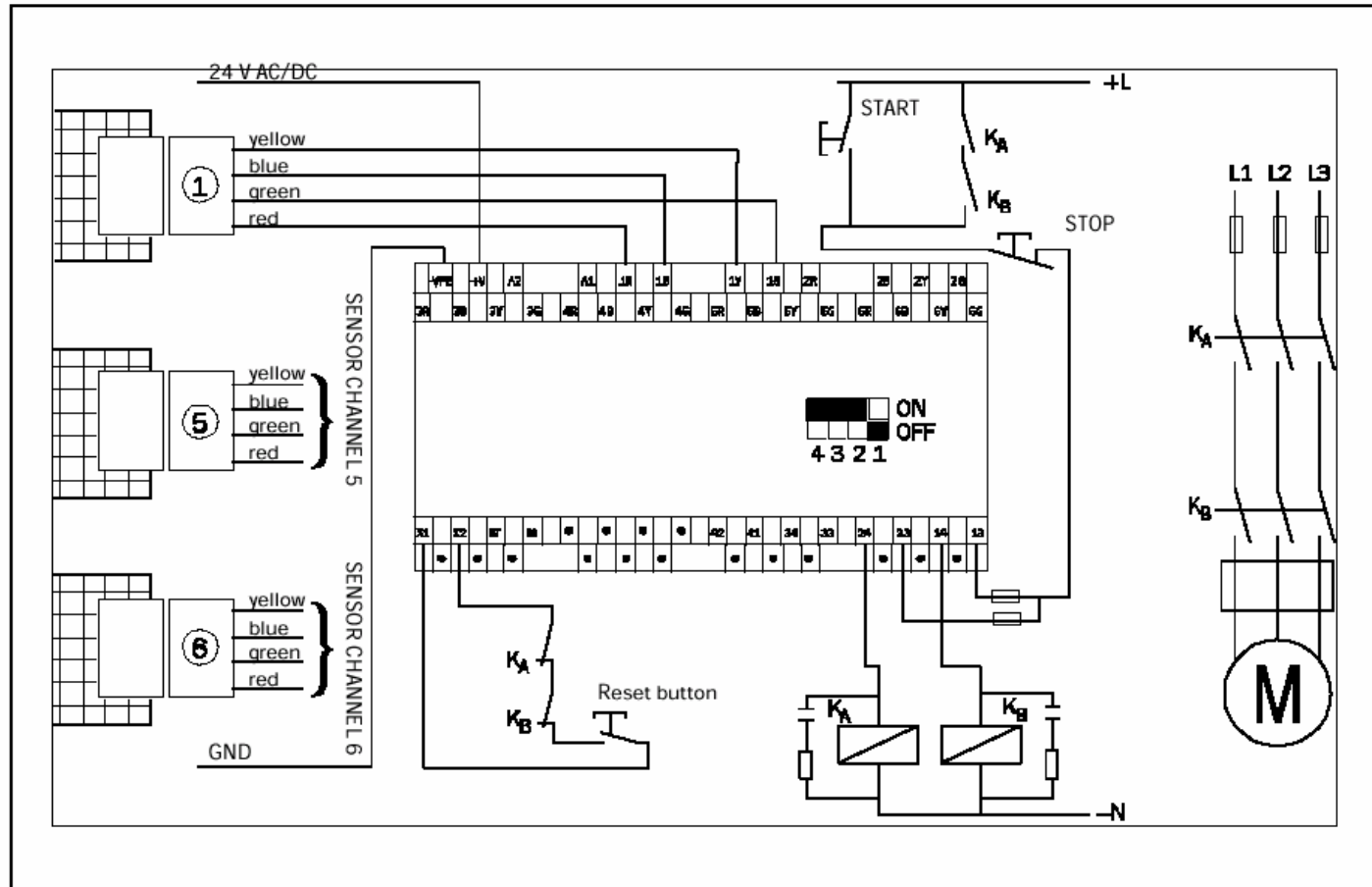


# New Safety Switches



## Safety Sensor RE 4000

### Wiring example



# New Safety Switches



## Safety Sensor RE 4000

### Dimensional drawing

