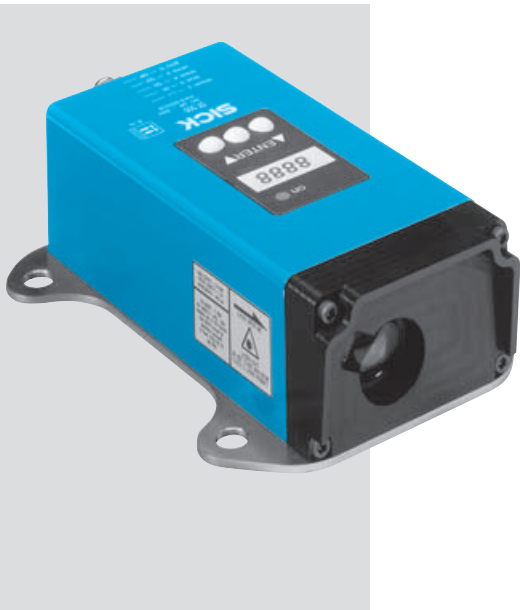
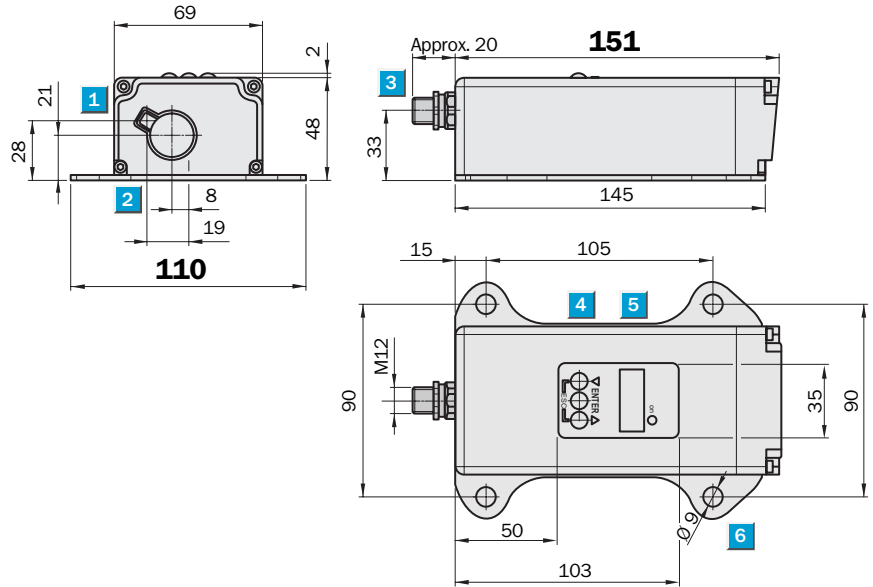


Measurement range
0.2 ... 18 m

Distance sensor

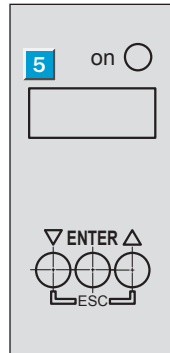
- High measurement accuracy thanks to time of flight measurement
- Simple alignment using red laser light
- Analog current interface
- Serial RS 422 data output
- Heatable metal housing
- Weather protection housing optional
- Alignment bracket optional

Dimensional drawing



Adjustments possible

All types

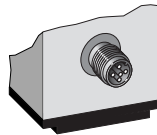
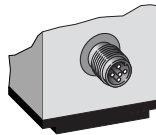


- 1 Optical axis – sender
- 2 Optical axis – receiver
- 3 M12 plug, 5-pin
- 4 Operating components
- 5 Indicator
- 6 Mounting hole

Connection type

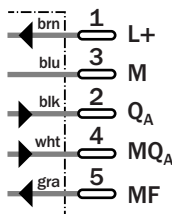
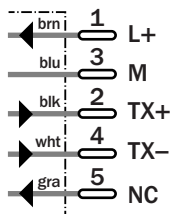
Serial (-A .. 2)

Analogue (-A .. 1)



5-pin, M12

5-pin, M12



Accessories

Cables and connectors

Mounting systems

Special accessories

Technical Data		DT500-	A111	A211	A112	A212						
Measuring range	0.2 ... 18 m (black), 6 % remission											
	0.2 ... 30 m (white), 90 % remission											
Accuracy	±3 mm											
Reproducibility ¹⁾	1 mm											
Measured value output	250 ms											
Temperature drift	Typ. 0.05 mm/K											
Light spot diameter	30 mm at 20 m											
Resolution	1 mm											
Light source ²⁾, light type	Laser diode, red light											
Laser class	2 (EN 60825/21 CFR 1040)											
Supply voltage V_S ³⁾	10 ... 30 V DC											
Ripple ⁴⁾	5 V _{PP}											
Power consumption typ. without heating	2 W											
	with heating	22 W										
Analogue output (adjustable)	0–20 mA/4–20 mA											
Serial interface	RS 422; 19,2 kBd; 8, n, 1											
Measurement value display in mm ⁵⁾	20.000 CR LF											
VDE protection class ⁶⁾	<input type="checkbox"/>											
Enclosure rating	IP 65											
Ambient temperature	without heating	Operation	–10 °C ... +50 °C									
	with heating	Operation	–40 °C ... +50 °C									
		Storage	–25 °C ... +75 °C									
Weight	Approx. 1000 g											
Initialisation period	Typ. 500 ms											
EMC	EN 61000-6-2, EN 55011											
Mechanical load	Shock: EN 600 86-2-27/-2-29											
	Sine: EN 600 68-2-6											
	Noise: EN 600 68-2-64											

¹⁾ Statistical error 1 σ , environmental conditions constant

²⁾ Average service life 50,000 h at $T_A = +25$ °C

³⁾ Reverse-polarity protected

⁴⁾ May not exceed or fall short of V_S tolerances

⁵⁾ Without point, example output 20,000 mm

⁶⁾ Reference voltage 32 V DC

Error performance or no object in visibility field		Order information	
		Type	Part no.
Error:	Measurement value output display: 0.000	DT500-A111	1 026 515
	Analogue interface: 0/3.5 mA	DT500-A211	1 026 516
	Serial interface: 00000 CR LF	DT500-A112	1 026 517
No object in visibility field:	Measurement value output display: 99.99	DT500-A212	1 026 518
	Analogue interface: 20.5 mA		
	Serial interface: 99999 CR LF		