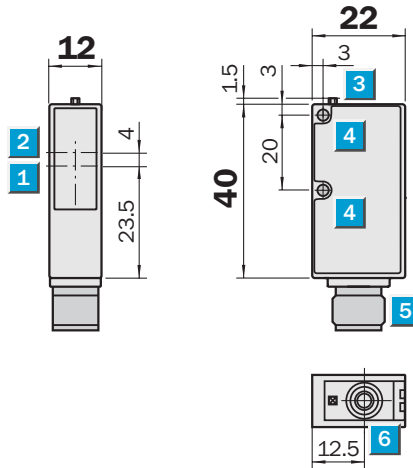


LUT 2

Luminescence scanner

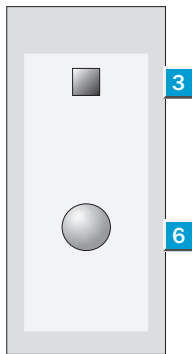
Dimension illustration



Setting options

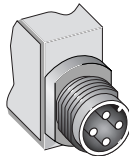
LUT 2-P1116
LUT 2-N1116

- 1 Axis of the sender optics
- 2 Axis of the receiver optics
- 3 LED signal strength indicator
- 4 Mounting hole
- 5 Plug M 12, 4-pin
- 6 Teach-in button

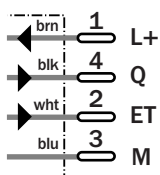


Connection type

LUT 2-P1116
LUT 2-N1116



4-pin, M 12



Scanning distance
12.5 mm

Luminescence scanner

- Switching threshold adjustment for low fluorescence
- Static Teach-in to mark and/or background via control cable or control panel on unit
- Switching frequency 500/s and 2000/s
- M 12 equipment plug



LUT 2 Luminescence scanner

Technical data		LUT 2	P1116	N1116							
Scanning distance	12.5 mm										
from front edge of lens											
Wavelength	370 nm										
Light spot dimensions	2 x 2.5 mm										
Light source¹⁾, light type	UV light source										
Supply voltage V_s	24 VDC ± 20 %										
Ripple ²⁾	< 5 V _{pp}										
Current consumption ³⁾	< 30 mA										
Switching outputs	NPN: HIGH = V _s / LOW = < 2 V										
	PNP: HIGH = V _s - < 2 V / LOW = ca. 0 V										
Output current I _A max.	100 mA										
Response time ⁴⁾	1 ms/500 μs										
Switching frequency ⁵⁾	500/s and 2000/s										
Time delay optional	20 ms										
Teach-in input ET	PNP: Teach > 10 V...< V _s										
	NPN: Teach 0 V										
Connection type	Plug 4-pin, M 12										
VDE protection class⁶⁾	□										
Enclosure rating	IP 67										
Circuit protection⁷⁾	A, B, C										
Ambient temperature	Operation - 10 ... + 55 °C										
	Storage - 20 ... + 75 °C										
Shock load	To IEC 68										
Weight	Approx. 80 g										
Housing material	ABS										

¹⁾ Average service life 100,000 h at T_A = + 25 °C

²⁾ May not exceeded or fall short of V_s tolerances

³⁾ Without load

⁴⁾ Signal transit time with resistive load

⁵⁾ With light/dark ratio 1:1

⁶⁾ Reference voltage 50 V DC

⁷⁾ A = V_s connections reverse-polarity protected

B = Outputs short-circuit protected

C = Interference pulse suppression

Sensitivity adjustment

Standard applications are available with default setting of the LUT 2, no Teach-in procedure is necessary. Sensor with fix switching threshold and switching frequency 2000/s.

For low fluorescence of the mark and in the case of background fluorescence the sensitivity is set automatically with Teach-in via control panel or via control wire.

Teach-in via control panel:

- Place mark in light spot.
- Press the Teach-in button on the sensor for longer than 1 s.
First Teach-in procedure is triggered.
- Place the light spot on the background.
Second Teach-in procedure is triggered.

Confirmation:

- LED and status indicator do not blink = Teach-in procedure completed with low sensitivity (2000/s).
- LED and status indicator blink 2 x shortly = Teach-in procedure completed with high sensitivity (500/s).
- LED and status indicator blink rapidly = Teach-in procedure not completed.

Preselection: high sensitivity, switching frequency 500/s via control panel.

Teach-in via control panel:

- Place mark in light spot.
- Press the Teach-in button on the sensor for longer than 1 s.
First Teach-in procedure is triggered.
- Place the light spot on the background, and then trigger the second Teach-in procedure via the control wire.
- Press the Teach-in button in the next 2 seconds.

Confirmation:

- LED and status indicator blink 2 x shortly = Teach-in procedure completed with high sensitivity (500/s).
- LED and status indicator blink rapidly = Teach-in procedure not completed.

Teach-in via control wire:

- Place mark in light spot.
- Trigger the first Teach-in procedure via the control wire.
- Place the light spot on the background, and then trigger the second Teach-in procedure via the control wire.

Order information

Type	Part no.
LUT 2-P1116	1 023 500
LUT 2-N1116	1 023 501

Great Britain

Erwin Sick Ltd.
Waldkirch House
39 Hedley Road, St. Albans
Hertfordshire AL 1 5BN
☎ +44 17 27-83 11 21
Fax +44 17 27-85 67 67
info@sick.co.uk

USA

SICK, Inc.
6900 West 110th Street
Bloomington, MN 55438
☎ +1 (952) 9 41-67 80
Fax +1 (952) 9 41-92 87
WATS: 1-800-325-7425
info@sickusa.com

Australia

Sick Pty. Ltd. Head Office, P.O. Box 214
899 Heidelberg Road
Ivanhoe, Vic. 3079, Australia
☎ +61 39 49 74 10 0
(0 08) 33 48 02 - toll free
Fax +61 39 49 71 18 7
sales@sick.com.au

