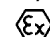


Further international Ex-Approvals on request

### Technical Data

#### Explosion protection:

 II 2 G / 2 D

EEx e II T6 (increased safety)

EEx ia IIC T6 (intrinsic safety)

EEx e(ia) IIC T6 (mixed fitting)

Temperature class T5 on request

#### Certificates:

Empty enclosure: PTB 01 ATEX 1061U

Terminal enclosure: PTB 00 ATEX 1002

#### Material:

Glassfibre-reinforced duroplastic polyester, graphite added

#### Colour:

similar to RAL 9011, black

#### Ingress protection:

IP 66, EN 60529

#### Impact resistance:

>7 Joule, EN 50014

#### Flammability:

self-extinguishing, UL 94/V0

#### Surface resistance:

<10<sup>9</sup> Ohm, EN 50014

#### Water absorption:

max. 0.7 %, ASTM D570

#### Toxicity:

halogenfree

#### Weather resistance:

UV-stabilized

#### Temperature range of application acc. EN:

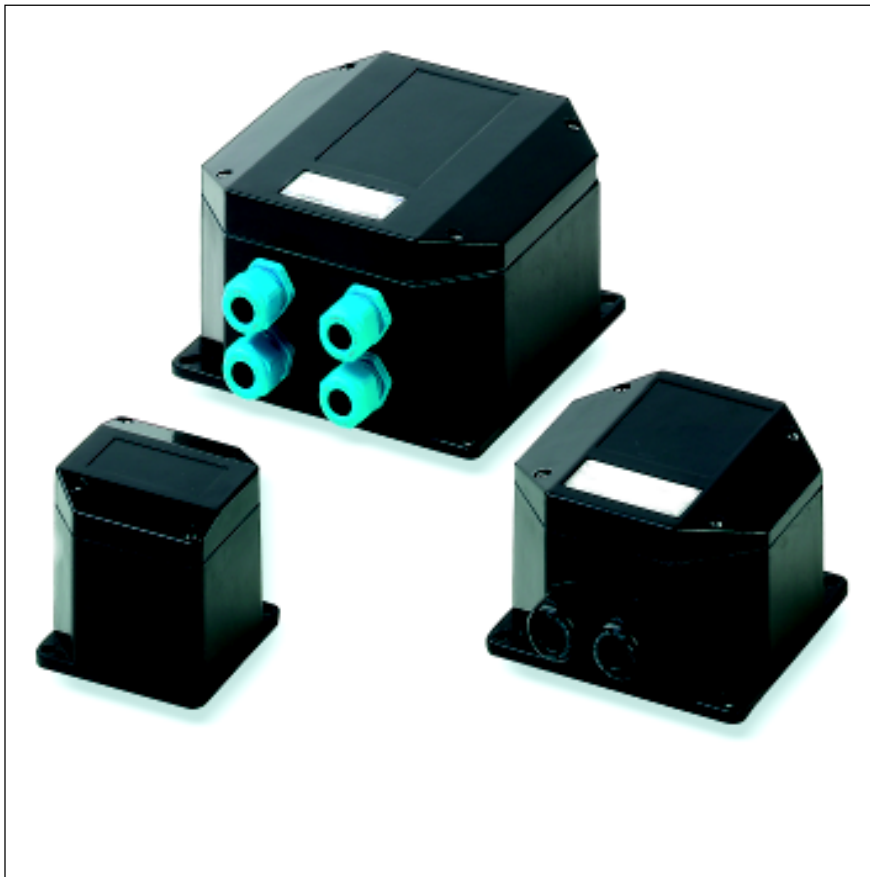
-20° to +40°C

(corresponds T6 = 85°C surface temperature)

-20° to +55°C

(corresponds T5 = 100°C surface temperature)

-55°C with special marking on request



- Empty enclosure with certification for individual fittings
- Terminal enclosure for increased safeguards intrinsic safety
- Robust polyester version
- Optional: Lid with window

### Including in delivery

Empty enclosure:  
Enclosure with silicone seal

Terminal enclosure:  
Enclosure system - depending on version  
either with silicone seal, continuity plate,  
DIN rails, internal earthing connection,  
terminals, manufacturing, cable glands

# Okta Box Ex ATEX

## Programme range

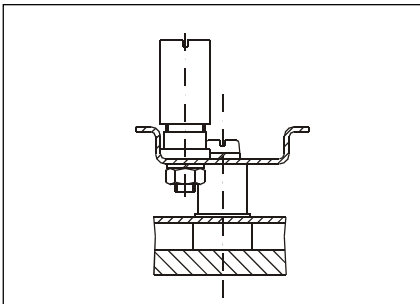
Type			Dimensions
Ex-e	Ex-ia	empty enclosure	W x L x H (mm)
06.88 01 00	16.88 01 00	26.88 01 00	80 x 80 x 70
06.88 02 00	16.88 02 00	26.88 02 00	120 x 120 x 75
06.88 03 00	16.88 03 00	26.88 03 00	160 x 160 x 93

## Accessories

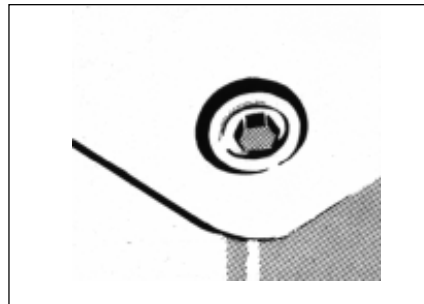
Type	DIN rail*		Sheath clamp terminal	PE busbar	Allen lid screws	Sealable lid screws	Continuity plate
	TS 15	TS35					
06/16/26.88 01 00			•		•		•
06/16/26.88 02 00	•		•		•	•	•
06/16/26.88 03 00	•	•		•	•	•	•

\* TS 32 on request

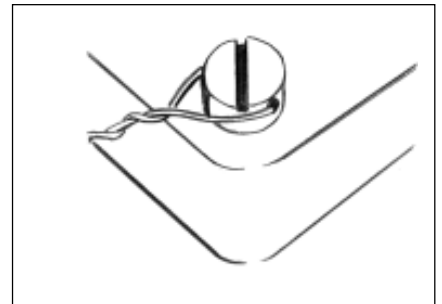
## Accessories



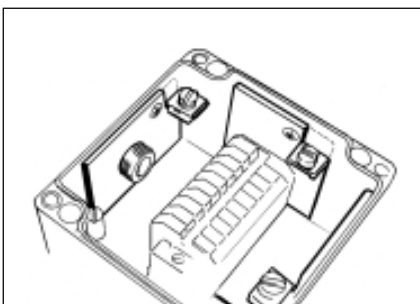
PE connection on DIN rail



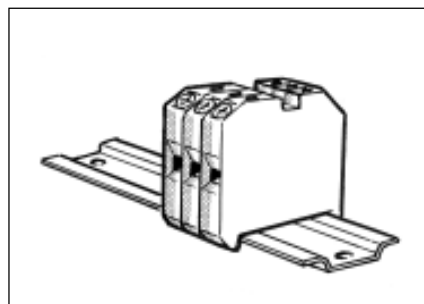
Allen lid screw in stainless steel



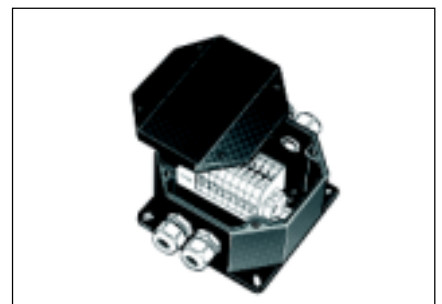
Sealable lid screw, corrosion-proof



Continuity plate standard brass



PE terminal blocks



Terminals, cable entries

*Terminal mounting*

Make	Phoenix																Bartec				Earthing connection									
DIN rail TS 15				X																										
DIN rail TS 32																														
DIN rail TS 35	X	X	X		X	X	X	X	X	X	X	X	X	X					X	X	X	X	X	X	X	X	X			
Voltage (V)	500	550	750	420	750	750	750	750	750	750	750	726	726					380	380											
Current (A)	17	22	23	27	30	38	57	72	112	135	210	265	350																	
Nominal cross-section (mm <sup>2</sup> )	1,5	2,5	2,5	4	4	6	10	16	35	50	95	150	240					2,5	2,5											
Terminal width (mm)	4,2	5,2	5,2	6,2	6,2	8,2	10,2	12,2	15,2	20	25	31	36					30	30											
Terminal type																		Ex-mini terminal	Ex-mini terminal blue											
Enclosure type	UK 1.5 N	UK 2.5 N	UK 3 N	MXK 4	UK 5 N	UK 6 N	UK 10 N	UK 16 N	UK 35	UKH 50	UKH 95	UKH 150	UKH 240																	
<b>06/16.88 01 00</b>	10	8	8																											
<b>06/16.88 02 00</b>	14	12	12			11	8	7												as required										
<b>06/16.88 03 00</b>	24	20	20			16	12	10	8																					

*Terminal mounting*

Make	Weidmüller																	Earthing connections												
DIN rail TS 15	X																													
DIN rail TS 32				X	X		X		X					X																
DIN rail TS 35		X			X		X		X		X	X		X	X					X	X	X	X	X	X					
Voltage (V)	275	550	550	550	750	550	550	550	550	750	750	750	550	750	750															
Current (A)	15	21	21	28	28	36	36	50	50	66	66	109	99	167	202															
Nominal cross-section (mm <sup>2</sup> )	1,5	2,5	2,5	4	4	6	6	10	10	16	16	35	35	70	95															
Terminal width (mm)	3,5	5	6	6	6	8	8	10	10	12	12	16	18	20,5	27															
Terminal type																														
Enclosure type	WDU 1.5 / R 3.5 / E	WDU 2.5 / E	SAK 2.5 / E	SAK 4 / E	WDU 4 / E	SAK 6 N / E	WDU 6 / E	SAK 10 / E	WDU 10 / E	SAK 16 / E	WDU 16 / E	WDU 35 / E	SAK 35 / E	WDU 70 N / E	WDU 70 / 95 / E															
<b>06/16.88 01 00</b>	12																													
<b>06/16.88 02 00</b>	14	12	12	12	12	9	9	7	7																					
<b>06/16.88 03 00</b>	21	18	18	18	18	13	13	11	11	9	9																			

Type: **EEx e 06.88 01 00**

**EEx ia 16.88 01 00**

Ex empty enclosure **26.88 01 00**

Certification **ATEX**

External dimensions **80 x 80 x 75,5 mm**

Weight **320 g**

DIN rail length in mm	max. fitting length in mm	PE bar max. number	PE busbar max. number	Sheath clamp terminal	Allen lid screws	Sealable lid screws	External mounting brackets	External hinges pair	Continuity plate	Silicone lid
TS 15										
82				•	•				•	•

max. number of **cable glands** acc. to **DIN 50262\***

Diameter of connection (mm²)	1,5	2,5	4	6	10	16	25	35	50	70	95
max. number of terminals**	10	8									
max. number of DIN rails											
Number of internal cables in dependence to current/A	6										
	10	32									
	16	11	21								
	20	4	12								
	25		5								
	35										
	50										
	63										
	80										
	100										
	125										
	160										
	200										
	225										
	250										
	315										
400											
500											

M	Cross-corner dim.	Side		PG	Cross-corner dim.	Side	
		A/B	C/D			A/B	C/D
12	17,25	3	3	7	17,25	3	3
16	25,30	1	1	9	21,85	2	2
20	27,60	1	1	11	25,30	1	1
25	37,95			13,5	27,60	1	1
32	48,30			16	31,05	1	1
40	60,95			21	37,95		
50	69,00			29	48,30		
63	74,75			36	60,95		
				42	69,00		
				48	74,75		

Number or internal cables/2 = number of terminals  
 \* not for armoured cables  
 \*\* Base: Terminal block Phoenix Contact, further see page 73

Type: **EEx e 06.88 02 00**

**EEx ia 16.88 02 00**

Ex empty enclosure **26.88 02 00**

Certification **ATEX**

External dimensions **120 x 120 x 75,5 mm**

Weight **500 g**

DIN rail length in mm	max. fitting length in mm	PE bar max. number	PE busbar max. number	Sheath clamp terminal	Allen lid screws	Sealable lid screws	External mounting brackets	External hinges pair	Continuity plate	Silicone lid
TS 15/35										
101	72									

max. number of **cable glands** acc. to **DIN 50262\***

Diameter of connection (mm²)	1,5	2,5	4	6	10	16	25	35	50	70	95
max. number of terminals**	14	12	11	8	7						
max. number of DIN rails	1	1	1	1	1						
Number of internal cables in dependence to current/A	6										
	10	36									
	16	12	24	93							
	20	5	14	27							
	25		6	15							
	35			4	16	16					
	50										
	63										
	80										
	100										
	125										
	160										
	200										
	225										
	250										
	315										
400											
500											

M	Cross-corner dim.	Side		PG	Cross-corner dim.	Side	
		A/B	C/D			A/B	C/D
12	17,25	8	8	7	17,25	8	8
16	25,30	3	3	9	21,85	5	5
20	27,60	2	2	11	25,30	3	3
25	37,95	1	1	13,5	27,60	2	2
32	48,30			16	31,05	2	2
40	60,95			21	37,95	1	1
50	69,00			29	48,30		
63	74,75			36	60,95		
				42	69,00		
				48	74,75		

Number or internal cables/2 = number of terminals  
 \* not for armoured cables  
 \*\* Base: Terminal block Phoenix Contact, further see page 73

Type: **EEx e 06.88 03 00**

**EEx ia 16.88 03 00**

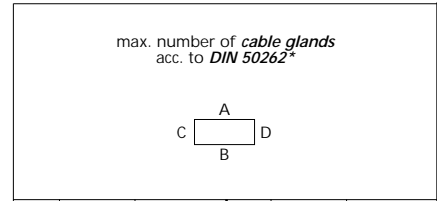
Ex empty enclosure **26.88 03 00**

Certification **ATEX**

External dimensions **160 x 160 x 93 mm**

Weight **320 g**

DIN rail length in mm	max. fitting length in mm	PE bar max. number	PE busbar max. number	Sheath clamp terminal	Allen lid screws	Sealable lid screws	External mounting brackets	External hinges pair	Continuity plate	Silicone lid
TS 15/35										
141	107,5			•	•				•	•



Diameter of connection (mm <sup>2</sup> )	1,5	2,5	4	6	10	16	25	35	50	70	95
max. number of terminals**	24	20	16	12	10	8					
max. number of DIN rails	1	1	1	1	1	1					
Number of internal cables in dependence to current/A	6										
	10	47									
	16	16	31	121							
	20	6	18	35							
	25		8	20	38						
	35			5	15	37					
	50					12					
	63					4					
	80						16				
	100										
	125										
	160										
	200										
	225										
	250										
315											
400											
500											

M	Cross-corner dim.	Side		PG	Cross-corner dim.	Side	
		A/B	C/D			A/B	C/D
12	17,25	15	15	7	17,25	15	15
16	25,30	8	8	9	21,85	9	9
20	27,60	5	5	11	25,30	8	8
25	37,95	2	2	13,5	27,60	5	5
32	48,30	2	2	16	31,05	4	4
40	60,95			21	37,95	2	2
50	69,00			29	48,30	2	2
63	74,75			36	60,95		
				42	69,00		
				48	74,75		

Number of internal cables/2 = number of terminals

\* not for armoured cables

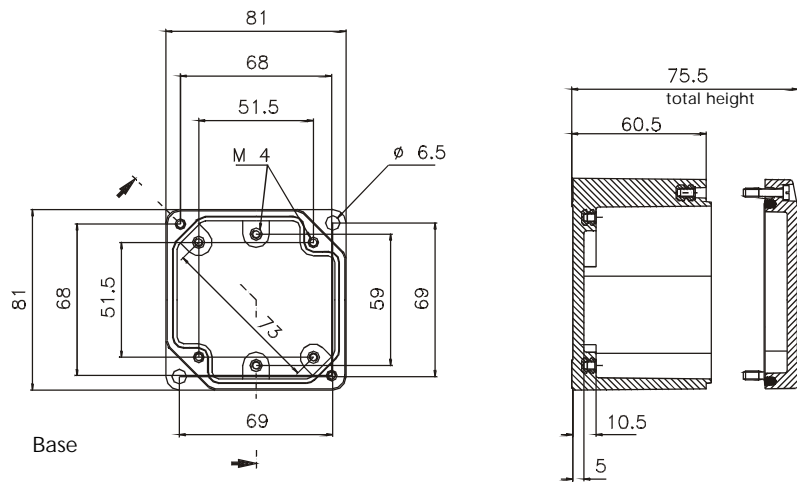
\*\* Base: Terminal block Phoenix Contact, further see page 73

max. number of internal cables

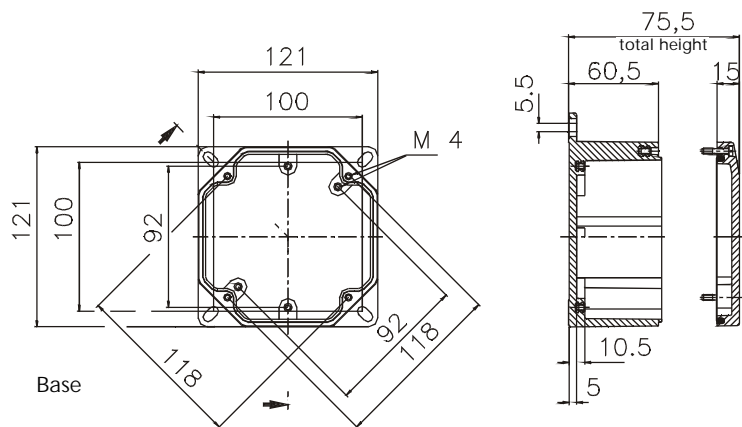
# Okta Box Ex ATEX

## Dimensions

Type  
06/16/26.88 01 00



Type  
06/16/26.88 02 00



Type  
06/16/26.88 03 00

