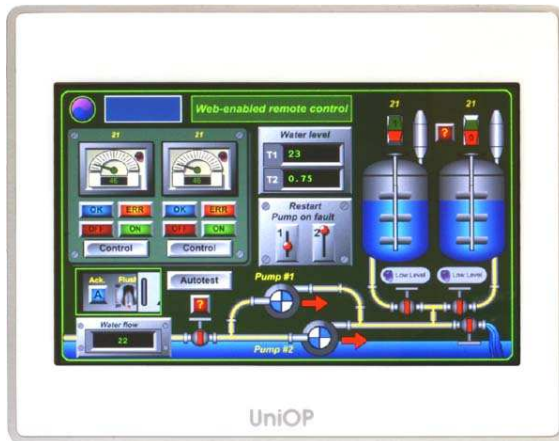


UniOP eTOP307

The UniOP eTOP Series 300 combines state-of-the-art features and performance with an outstanding design. They are the ideal choice for HMI applications including factory and building automation. The eTOP307 features a bright 7" TFT widescreen (16:9) display with LED backlight and full vector graphic capabilities. A great high-resolution display with the appealing 16:9 look comes in the most compact device. Connections include Ethernet and USB.



- 7" TFT color display, LED backlight
- 800x480 pixel (WVGA) resolution, 64K colors
- Advanced vector graphics
- Resistive touchscreen
- 64 MB user memory
- 10/100 Ethernet interface
- USB interface
- Connection to bus systems using optional plug-in modules
- Slim design. Mounting depth less than 50mm

Highlights

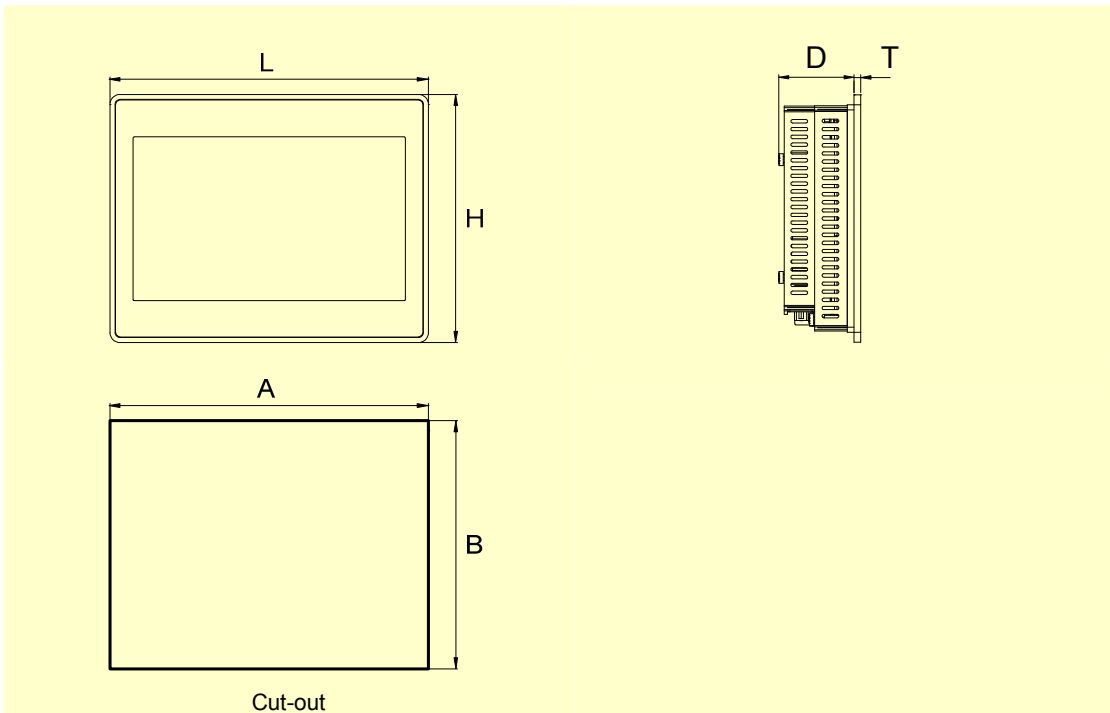
The eTOP Series 300 HMI panels are fully compatible with UniOP Designer 6 software.

- Powerful and intuitive programming with the UniOP Designer 6 software.
- Supports more than 150 communication drivers.
- Built-in Ethernet port for communication with devices, programming the HMI from Designer and retrieving data from computers.
- USB host port for the connection of flash drives. Flash drives can be used for upgrading applications and firmware.
- Optional plug-in modules for fieldbus systems and networks. Compatible with TCM and SCM modules.
- Dual-driver communication capability.
- Vector graphic capabilities including the support of multiple layers and object transparency.
- Data display in numerical, text, bargraph, analog gauges and graphic image formats. Dynamic object properties supported.
- Data acquisition and trend presentation. Trend data can be transferred to a host computer using the Ethernet connection.
- Recipe data storage. Recipe data can be transferred to a host computer using the Ethernet connection or copied to flash drives via USB connection.
- Multilanguage applications. Far East languages are supported. The number of runtime languages is limited only by the available memory. All text information in the application can be exported to files in Unicode format for easier translation.
- Powerful macro editor to configure touchscreen operation
- Alarms and historical alarm list. Alarm and event information can be printed or transferred to a host computer.
- Eight level password protection.
- Report printing to serial printer. Reports are freely configurable using Designer.
- Ethernet-based UniNet network to share data between UniOP HMIs and to serve data using UniNet OPC Server.

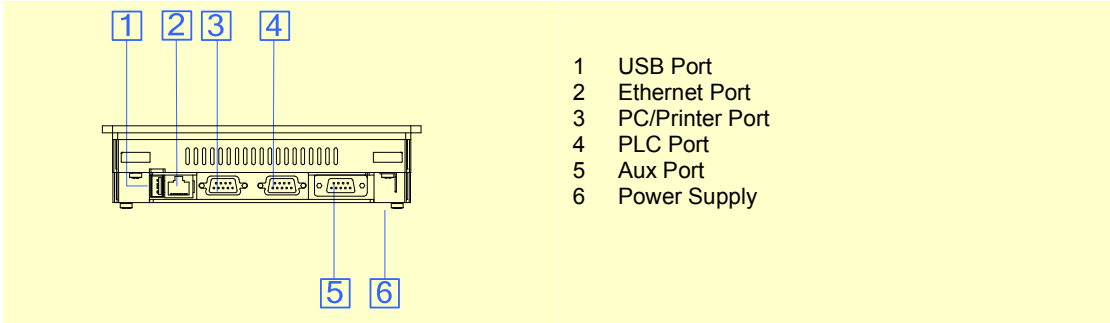
Technical Data

Display		Alarms	1024
Type	TFT	Event list	1024
Resolution	800x480, WVGA	Password	Yes
Active display area	7" diagonal	Hardware Real Time Clock	Yes, with battery back-up
Colors	64K	Screen saver	Yes
Backlight	LED	Buzzer	Yes, audible feedback for touchscreen
Brightness	160 Cd/m ² typ.		
Dimming	Yes		
Memory		Ratings	
User memory	64 MB internal Flash	Power supply voltage	24 V DC (18 to 30 Vdc)
		Current consumption	0.6A at 24Vdc(max.)
Front panel		Fuse	Automatic
Touchscreen	Analog resistive	Weight	Approx 1.0 Kg
User LED indicators	1	Battery	Rechargeable Lithium battery, not user-replaceable
System LED indicators	4		
Interfaces		Environmental Conditions	
Ethernet port	10/100 Mbit	Operating temperature	0 to 50 °C
USB port	Host interface, version 1.1	Storage temperature	-20 to +70 °C
PC/Printer port	RS-232, RS-485, RS-422, software configurable	Operating and storage humidity	5 – 85 % relative humidity, non-condensing
PLC port	RS-232, RS-485, RS-422, software configurable	Protection class	IP65 (front panel) IP20 (rear)
Aux port	Yes, fieldbus and controller modules		
Functionality		Dimensions	
Vector graphics	Yes	Faceplate LxH	187x147 mm (7.36x5.79")
Object dynamics (hide/show)	Yes	Cutout AxB	176x136 mm (6.93x5.35")
TrueType fonts	Yes	Depth D+T	45+4 mm (1.77+0.16")
Dual driver capability	Yes		
Video input	No	Approvals	
Data acquisition and trends	Yes	CE	Emission EN 61000-6-4 Immunity EN 61000-6-2 for installation in industrial environments
Multilanguage	Yes, number of run-time languages limited only by available memory		
Recipe memory	Yes. Flash memory storage limited only by available memory		
UniNet network	Client/Server		

Dimensions



Connections



Ordering Information

eTOP307	7" widescreen TFT color touchscreen with Ethernet and USB interfaces.
PROT-03	Disposable protection foil for 5.7" eTOP touch panels (10 pieces)

ptn0301

Ver. 1.1

Copyright © 2009 Sitek S.p.A. – Verona, Italy

Subject to change without notice

The information contained in this document is provided for informational purposes only. While efforts were made to verify the accuracy of the information contained in this documentation, it is provided "as is" without warranty of any kind.

www.uniop.com

ptn0301-1.doc - 4.03.2009

UniOP eTOP307