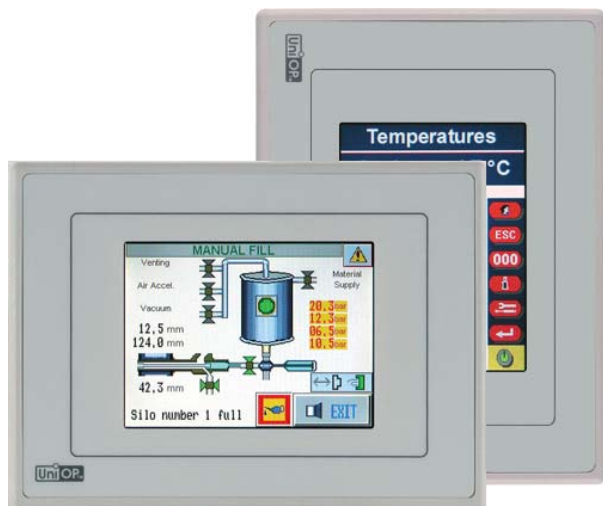


## UniOP eTOP02C

The eTOP02C is a compact HMI device with a brilliant TFT display and touchscreen interface. The built-in 100Mb Ethernet interface enhances its communication capability. It is the ideal solution for applications where low cost and small size, without compromising performance, are a requirement.



- 3.5" TFT color display
- 256 colors
- 1/4 VGA (320x240 pixel) resolution
- Portrait mode operation
- Resistive touchscreen
- 2 MB user memory
- Ethernet interface
- Connection to industrial bus systems (requires optional plug-in modules)

### Highlights

The eTOP02C panel is a compact and low-cost product. It is an enhanced version of the standard eTOP02 with the addition of an Ethernet interface. It supports the rich common functionality of the UniOP operator panels:

- Powerful and intuitive programming with the UniOP Designer 6 software
- Support of more than 130 communication drivers for industrial devices
- Integrated Ethernet port for connection to field devices as well as programming the HMI from Designer.
- Optional modules for fieldbus systems (Profibus DP, CANopen, DeviceNet, Interbus).
- Dual-driver communication capability; dual serial communication configurations are possible with the use of the optional TCM15/TCM16 modules.
- Advanced graphic capabilities
- Optimize mounting space and options with the portrait mode capability.
- Display dynamic data in numerical, text, bargraph and graphic image formats
- Recipe data storage. Recipe data can be transferred to a host computer using the Ethernet connection.
- Multilanguage applications. The number of runtime languages is limited only by the available memory. All text information in the application can be exported in Unicode format for easier translation.
- Powerful macro editor to configure touchscreen operation
- Alarms and historical alarm list. Alarm and event information can be printed or transferred to a host computer using the Ethernet connection.
- Eight level password protection.
- Report printing to serial printer. Reports are freely configurable using Designer.
- Ethernet-based UniNet network to share data between UniOP HMIs and to serve data using UniNet OPC Server.

## Technical Data

### Display

|                     |                              |
|---------------------|------------------------------|
| Type                | TFT                          |
| Resolution          | ¼ VGA, 320x240 pixel         |
| Active display area | 3.5" diagonal (71.5x53.6 mm) |
| Colors              | 256                          |
| Backlight           | LED                          |
| Brightness          | 150 cd/m <sup>2</sup> typ.   |
| Dimming             | Yes                          |

### Memory

|                       |                     |
|-----------------------|---------------------|
| User memory           | 2 MB internal Flash |
| Alternate User memory | -                   |

### Front panel

|               |                  |
|---------------|------------------|
| Touch screen  | Analog resistive |
| Function keys | -                |
| System keys   | -                |
| User LED's    | -                |
| System LED's  | -                |

### Interfaces

|                          |                            |
|--------------------------|----------------------------|
| PC/Printer port          | -                          |
| PLC port                 | RS-232, RS-485, RS-422     |
| Ethernet port            | 100 Mbit                   |
| Aux port (fieldbus)      | Yes, with optional modules |
| DX port (video input)    | No                         |
| Serial programming speed | 9600 – 38400 bps           |

### Functionality

|                             |               |
|-----------------------------|---------------|
| Vector graphics             | No            |
| Dual driver capability      | Yes           |
| Video input                 | No            |
| Data acquisition and trends | No            |
| Recipe memory               | 32 KB         |
| UniNet network              | Client/Server |
| Alarms                      | 1024          |
| Event list                  | 256           |

|              |   |
|--------------|---|
| Password     | Yes   |
| Hardware RTC | Yes, battery backed   |
| Screen saver | Yes   |
| Buzzer       | No  |
| Battery      | 3 V 270 mA Lithium, non rechargeable, user replaceable, model CR2430. Replace with same component or equivalent compatible with the operating temperature of the product. |

### Ratings

|                      |                         |
|----------------------|-------------------------|
| Power supply voltage | 24 V DC (18 to 30 V DC) |
| Current rating       | 0.4 A at 24 VDC         |
| Fuse                 | Automatic               |
| Weight               | Approx 1.0 Kg           |

### Environmental Conditions

|                                |                                |
|--------------------------------|--------------------------------|
| Operating temperature          | 0 to 50 °C (vertical mounting) |
| Storage temperature            | -20 to +70 °C                  |
| Operating and storage humidity | 5 – 85 % RH non-condensing     |
| Protection class               | IP65 (front panel)             |

### Dimensions

|                |                         |
|----------------|-------------------------|
| Faceplate LxH  | 149x109 mm (5.86x4.29") |
| Cutout AxB     | 136x96 mm (5.35x3.78")  |
| Mounting depth | 56 mm (2.40")           |

### Approvals

|    |   |
|----|---|
| CE | Emission<br>EN 61000-6-4<br>Immunity<br>EN 61000-6-2<br>for installation in industrial environments |
|----|---|

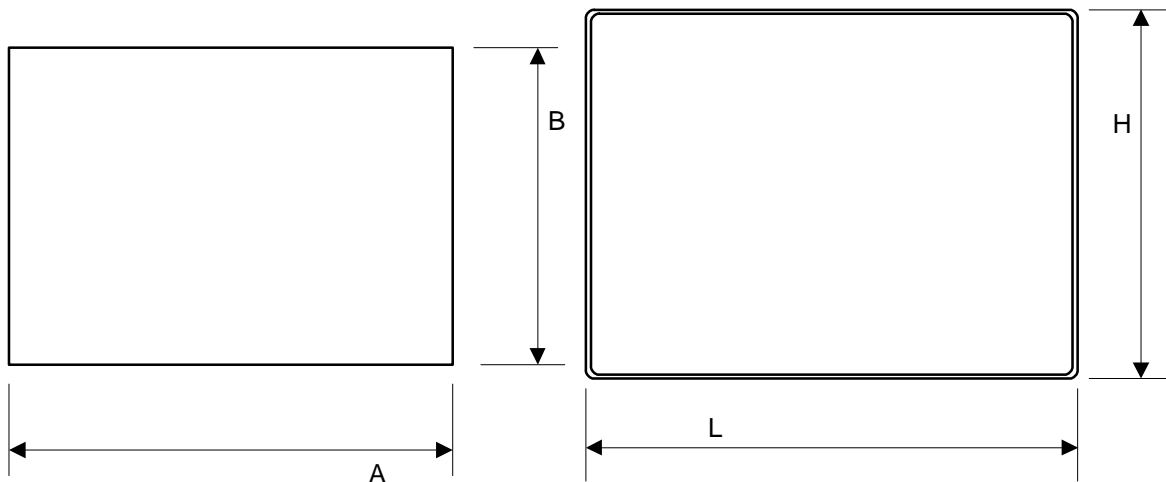


Figure 1 – Cutout and front view

### Ordering Information

eTOP02C-0046  
PROT-07  
TCM15  
TCM16

3.5" 1/4 VGA TFT color touchscreen panel with Ethernet interface  
Disposable protection film for 3.5"/3.8" eTOP touch panels (10 pieces)  
Add-on module for serial expansion RS-232  
Add-on module for serial expansion RS-485

**Tn261**  
**Ver. 1.1**

**Copyright © 2007, 2008 Sitek S.p.A. – Verona, Italy**

Subject to change without notice

The information contained in this document is provided for informational purposes only. While efforts were made to verify the accuracy of the information contained in this documentation, it is provided "as is" without warranty of any kind.

[www.uniop.com](http://www.uniop.com)

tn261-1.doc - 5.08.2008  
UniOP eTOP02C