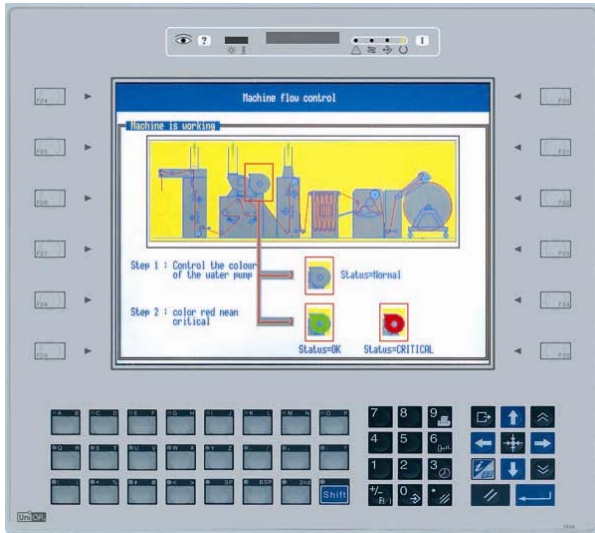


## UniOP ePAD33C

The ePAD33C is a state-of-the-art HMI device with a VGA graphic display and a complete keypad. The aluminum bezel offers an appealing look in a rugged and convenient flat design.



- 10.4" TFT color display
- 640x480 pixel resolution
- 64K colors
- 10/100 Ethernet interface
- USB port
- Connection to industrial bus systems using optional plug-in modules
- Compatible with video input module
- 64 MB user memory

### Highlights

The ePAD33C HMI panel is a member of the UniOP family of HMI products. The ePAD33C offers the rich functionality of the UniOP operator panels:

- Powerful and intuitive programming with the UniOP Designer 6 software
- Support of more than 150 communication drivers for industrial devices
- Built-in Ethernet port for connection to field devices as well as programming the HMI from Designer.
- USB host port for the connection of flash drives. Flash drives can be used for application upgrade as well as firmware upgrade of the device
- Optional plug-in modules for fieldbus systems and networks (Profibus DP, CANopen, DeviceNet, Interbus, KNX)
- Dual-driver communication capability
- Vector graphic capabilities including the support of multiple layers and object transparency.
- Video input option
- Display dynamic data in numerical, text, bargraph, analog gauges and graphic image formats
- Data acquisition and trend presentation. Trend data can be transferred to a host computer using the Ethernet connection.
- Recipe data storage. Recipe data can be transferred to a host computer using the Ethernet connection or copied to flash drives via USB connection.
- Multilanguage applications. The number of runtime languages is limited only by the available memory. All text information in the application can be exported in Unicode format for easier translation.
- Powerful macro editor to configure keypad operation
- Alarms and historical alarm list. Alarm and event information can be printed or transferred to a host computer.
- Eight level password protection.
- Report printing to serial printer. Reports are freely configurable using Designer.
- Ethernet-based UniNet network to share data between UniOP HMIs and to serve data using UniNet OPC Server.

## Technical Data

<b>Display</b>		UniNet network	Client/Server
Type	TFT	Alarms	1024
Resolution	640x480 pixel	Event list	1024
Active display area	218x159 mm (10.4" diagonal)	Password	Yes
Colors	64K	Hardware RTC	Yes, battery back-up
Backlight	CCFL, 50 Kh <sup>(1)</sup>	Screen saver	Yes
Brightness	300 cd/m <sup>2</sup> typ.	Buzzer	Yes, audible feedback for keyboard
Dimming	Yes		
<b>Memory</b>		<b>Ratings</b>	
User memory	64 MB internal Flash	Power supply voltage	24 V DC (18 to 30 Vdc)
Alternate User memory	Optional removable 32/64 MB SSFDC memory card	Current consumption	Max 1.2 A at 24 Vdc
		Fuse	Automatic
		Weight	Approx 2.7 Kg
		Battery	3 V 285 mA Lithium, non rechargeable, user replaceable, RENATA model CR2430. Replace with same component or equivalent.
<b>Front panel</b>		<b>Environmental Conditions</b>	
Touch screen	No	Operating temperature	0 to 45 °C
Function keys	35	Storage temperature	-20 to +70 °C
System keys	24	Operating and storage humidity	5 – 85 % RH non-condensing
User LED's	24	Protection class	IP65 (front panel) IP20 (rear)
System LED's	4		
<b>Interfaces</b>		<b>Dimensions</b>	
PC/Printer port	Yes, RS-232	Faceplate LxH	311x276 mm (12.24x10.87")
PLC port	RS-232, RS-485, RS-422, 20 mA Current Loop	Cutout AxB	292x257 mm (11.50x10.12")
Ethernet port	10/100 Mbit	Mounting depth	91 mm (3.58")
USB port	Host version 1.1 <sup>(2)</sup>		
Aux port (fieldbus)	Yes, with optional modules	<b>Approvals</b>	
DX port (video input)	Yes	CE	Emission EN 61000-6-4 Immunity EN 61000-6-2 for installation in industrial environments
Serial programming speed	9600 – 38400 bps		
<b>Functionality</b>			
Vector graphics	Yes		
Dual driver capability	Yes		
Video input	Yes		
Data acquisition and trends	Yes		
Recipe memory	Yes. Flash memory storage limited only by available memory <sup>(2)</sup>		

Note 1: the lamp lifetime is the typical value for continuous operation at 25°C.

Note 2: operation of the built-in USB interface and recipe storage to flash memory require an appropriate firmware version and use of Designer 6.07 or higher.

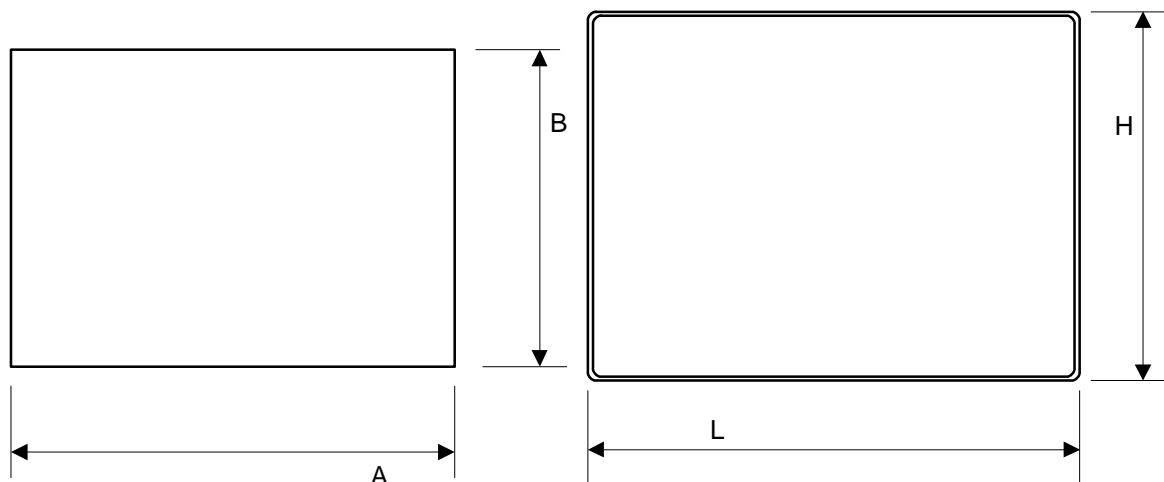


Figure 1 – Cutout and front view

### Ordering Information

ePAD33C-0050

10.4" VGA TFT color panel with keypad. Ethernet and USB interfaces.

---

**Tn293**

**Ver. 1.0**

**Copyright © 2008 Sitek S.p.A. – Verona, Italy**

Subject to change without notice

The information contained in this document is provided for informational purposes only. While efforts were made to verify the accuracy of the information contained in this documentation, it is provided "as is" without warranty of any kind.

[www.uniop.com](http://www.uniop.com)

tn293-0.doc - 7.08.2008

UniOP ePAD33C