



product  
design  
award



powered by **EXOR**

# H3 MOBILE HANDHELDS |

WITH INTEGRATED JMOBILE HMI SOFTWARE

# TABLE OF CONTENTS

- H3 HANDHELDS **THE BEST MOBILE HMI CHOICE**
- HANDHELD DEVICES **AND ERGONOMICS**
- OPTIONAL COMPONENTS
- HARDWARE AND SOFTWARE **SPECS**
- STANDARDS AND **DIRECTIVES**
- HOW TO ORDER
- CONCLUSIONS AND **CONTACTS**



# ONE H3 HANDHELD SERIES + INTEGRATED JMOBILE SOFTWARE



- ✓ STUNNING DESIGN/ERGONOMICS
- ✓ MULTIPLE INTEGRATED DEVICES (KEYS/POTENTIOMETERS/HANDWHEEL/STATE SELECTOR)
- ✓ EASY TO PROGRAM
- ✓ EASY TO CONNECT
- ✓ 30 YEARS MANUFACTURING EXPERIENCE
- ✓ A-LEVEL SERVICE



powered by **EXOR**



THE PERFECT HMI CHOICE FOR YOUR MACHINE

INTEGRATED HW/SW FOR LOW DEVELOPMENT COSTS



THE MOBILE HMI FOR AUTOMATION & MACHINERY

UP TO 20 METERS CABLE

# HANDHELD DEVICES **AND** ERGONOMICS

16 positions state selector (hardwired)

2 programmable potentiometers

Emergency stop button

Optional integrated handwheel

19 programmable physical keys

Touchscreen



**IF Design Award** for  
design and  
ergonomics



**EVERYTHING YOU NEED AT YOUR FINGER TIPS**

**FULL CONTROL IN 700 GRAMS**



**kg**  

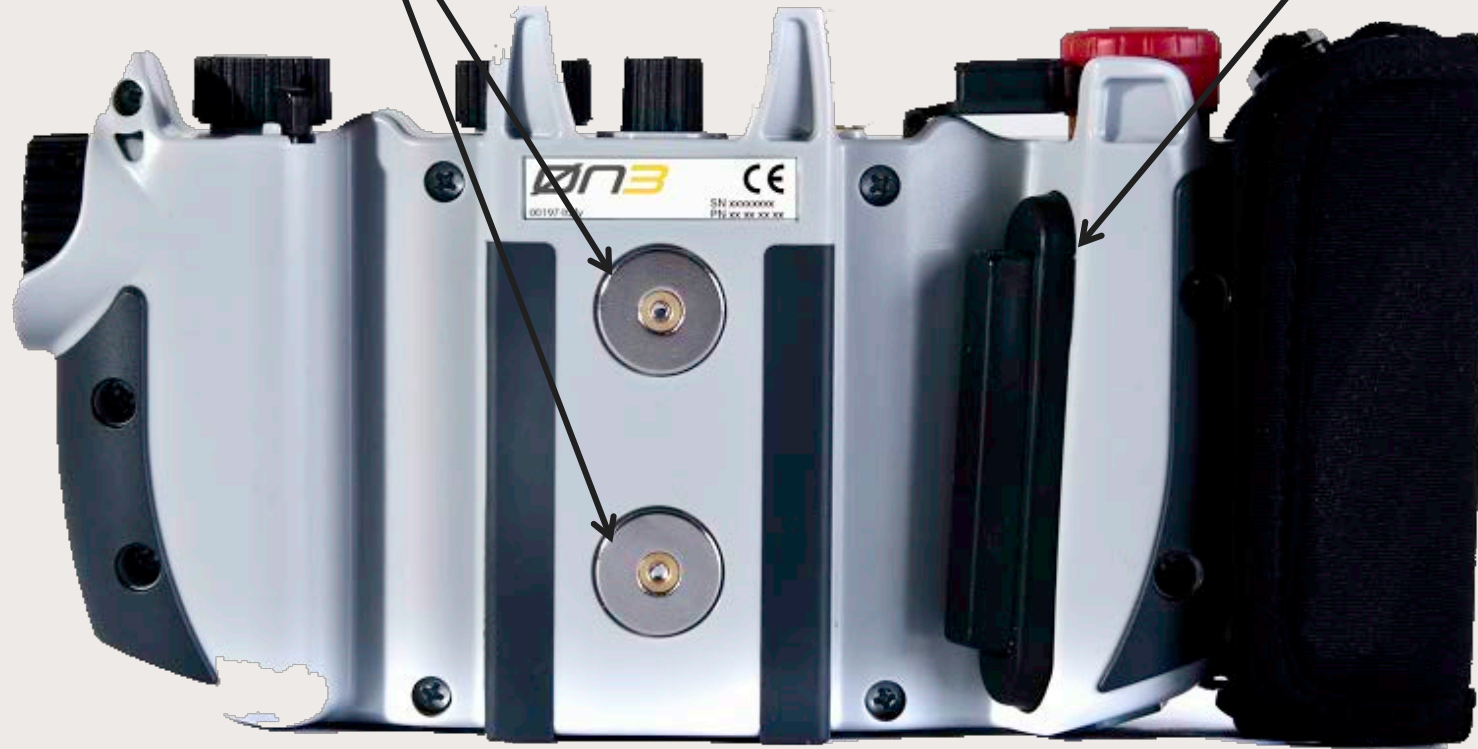
700 grams      22 x 13 x 5 cm

Light and Compact

Hanging magnets

Safety enabling device

Hand strap



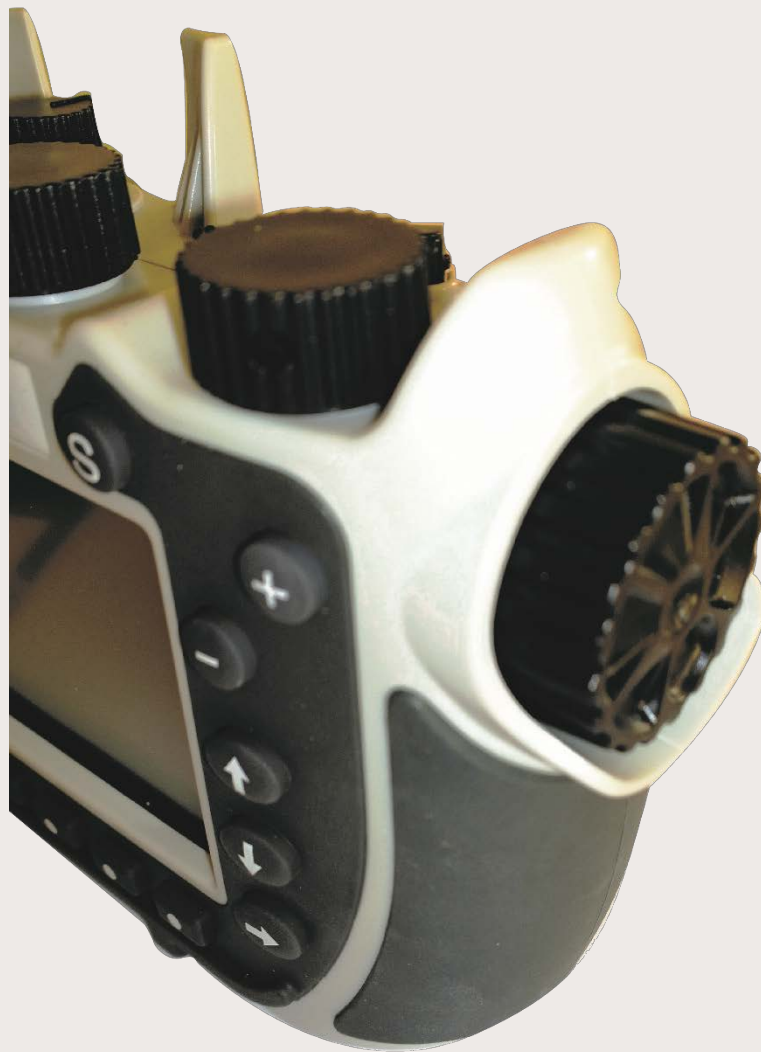
**IP 64**

**REAR HANGING MAGNETS** |

**HANG IT WHEREVER YOU NEED**

# OPTIONAL COMPONENTS





**INTEGRATED HANDWHEEL** |

**40 PULSE/ROTATION**



**HANDHELD HOLDER**

**EASILY HOLD YOUR HANDHELD**



**CONNECTION BOX** |

**EASILY CONNECT YOUR HANDHELD**



Standard cable comes with free termination. Connection Box organizes wires inside the electrical cabinet using a fast-snap circular connector.

19 wires enter the connection box and are divided into safety (emergency stop button, enabling device, state selector) and data (RJ45 for Ethernet)



**CONNECTION BOX** |

**CONNECTION SCHEME**

# HARDWARE AND SOFTWARE **SPECS**

## Hardware specifications

- 600MHz ARM Cortex-A8
- Embedded Graphic engine
- Flash Memory: 128MB Flash
- RAM Memory: 256MB DDR
- Display Dimensions: 5"
- Colors: 64K
- Resolution: RGB 480 x 272
- USB interface: USB A (Host)

## Cable connection

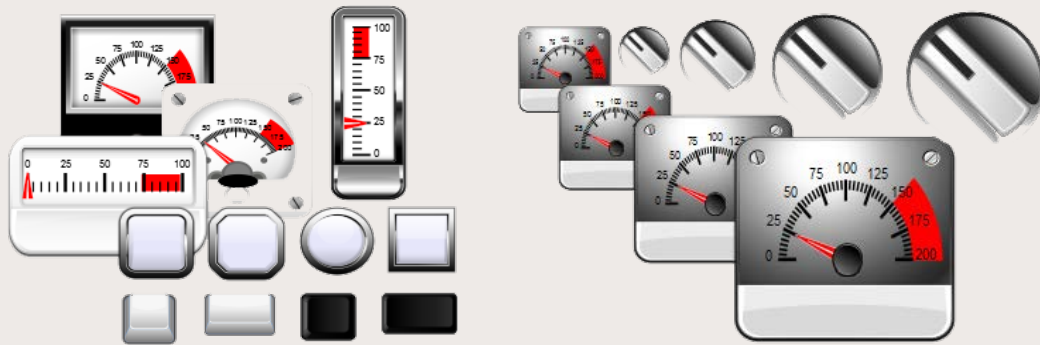
- SERIAL: RS-232/RS-422/RS-485 software configurable
- ETHERNET: 10/100 Mbit
- Cable length (serial/ethernet): 10, 20 mt

**EXOR STANDARD HARDWARE** |

**GREAT RELIABILITY AND SERVICE**

## ONE Power Jmobile run time\*

To run your powerful HMI and connect to the main controller by means of more than 35 built in automation protocols.



## More than 35 built in protocols

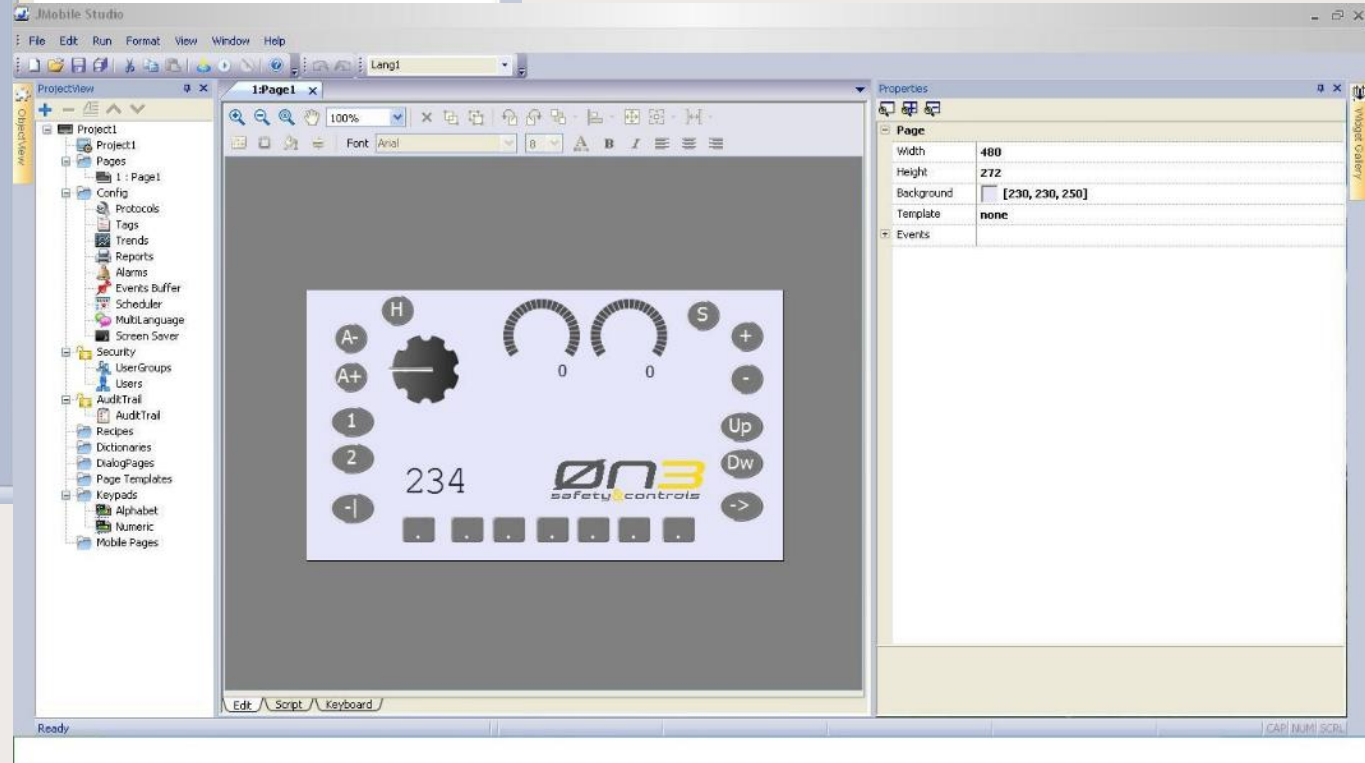
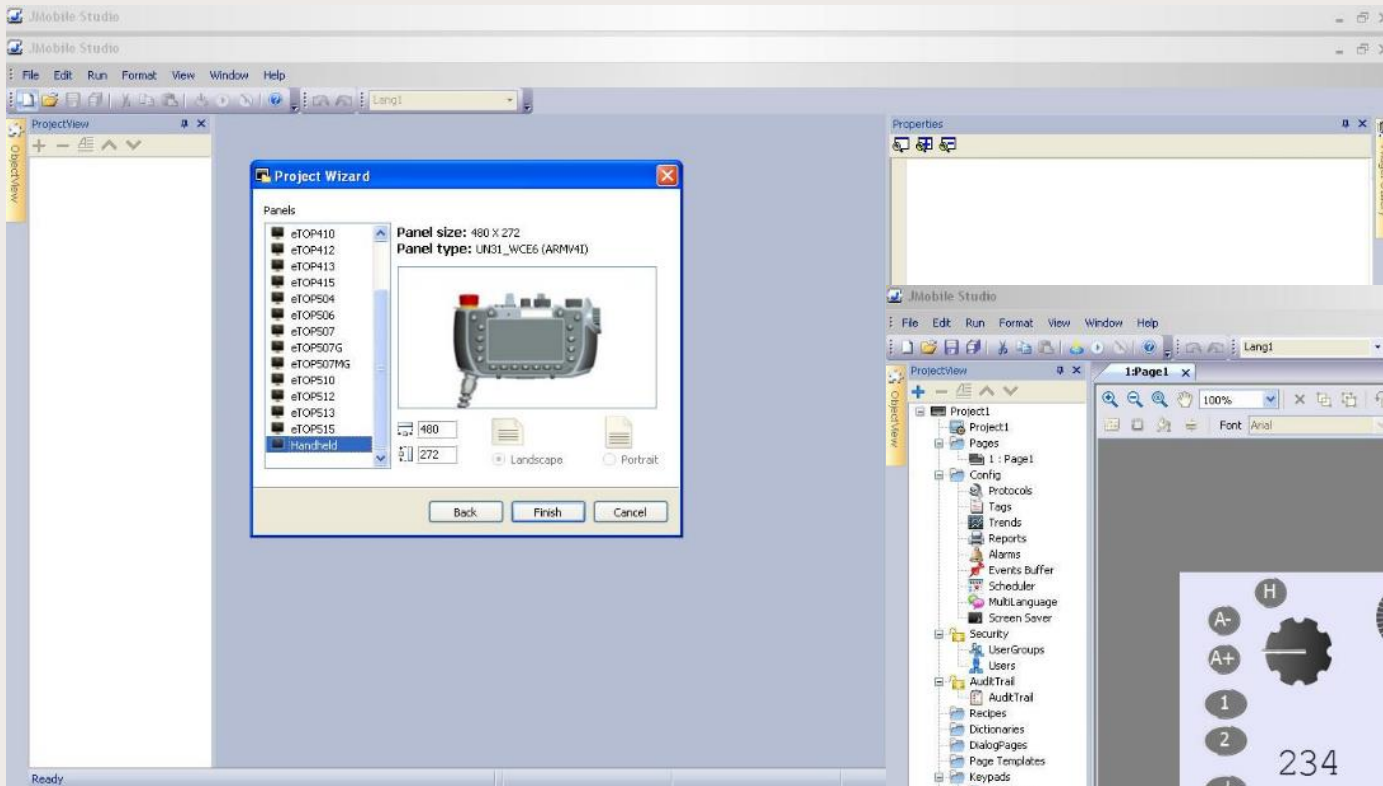
A-B DF1, A-B DH-485, A-B ENET, Baldor NextMove, Beckhoff ADS, CODESYS V2 SER, CODESYS V2 ETH, CoDeSys V3 ETH, Panasonic FP, EIA Modbus TCP, EtherNet/IP CIP, Fatek FACON ETH, Fatek FACON SER, GE Intelligent Platforms SNP, GE Intelligent Platforms SRTP, Hitachi ETH, Hitachi SER, Jetter Ext ETH, Keyence KV, Koyo DL, Mitsubishi FX ETH, Mitsubishi FX SER, Mitsubishi Q/L ETH, Modbus TCP Server, CT Modbus CMP EHT, RTU Server, Modbus TCP, Modbus RTU, NMEA 0183, Omron FINS ETH, Omron FINS SER, ProConOS ETH, Simatic S7 Ethernet, Simatic S7 PPI.

\* Also available with WIN CE OS to install third party HMI SW



INTEGRATED JMOBILE RUNTIME

YOUR POWERFUL HMI



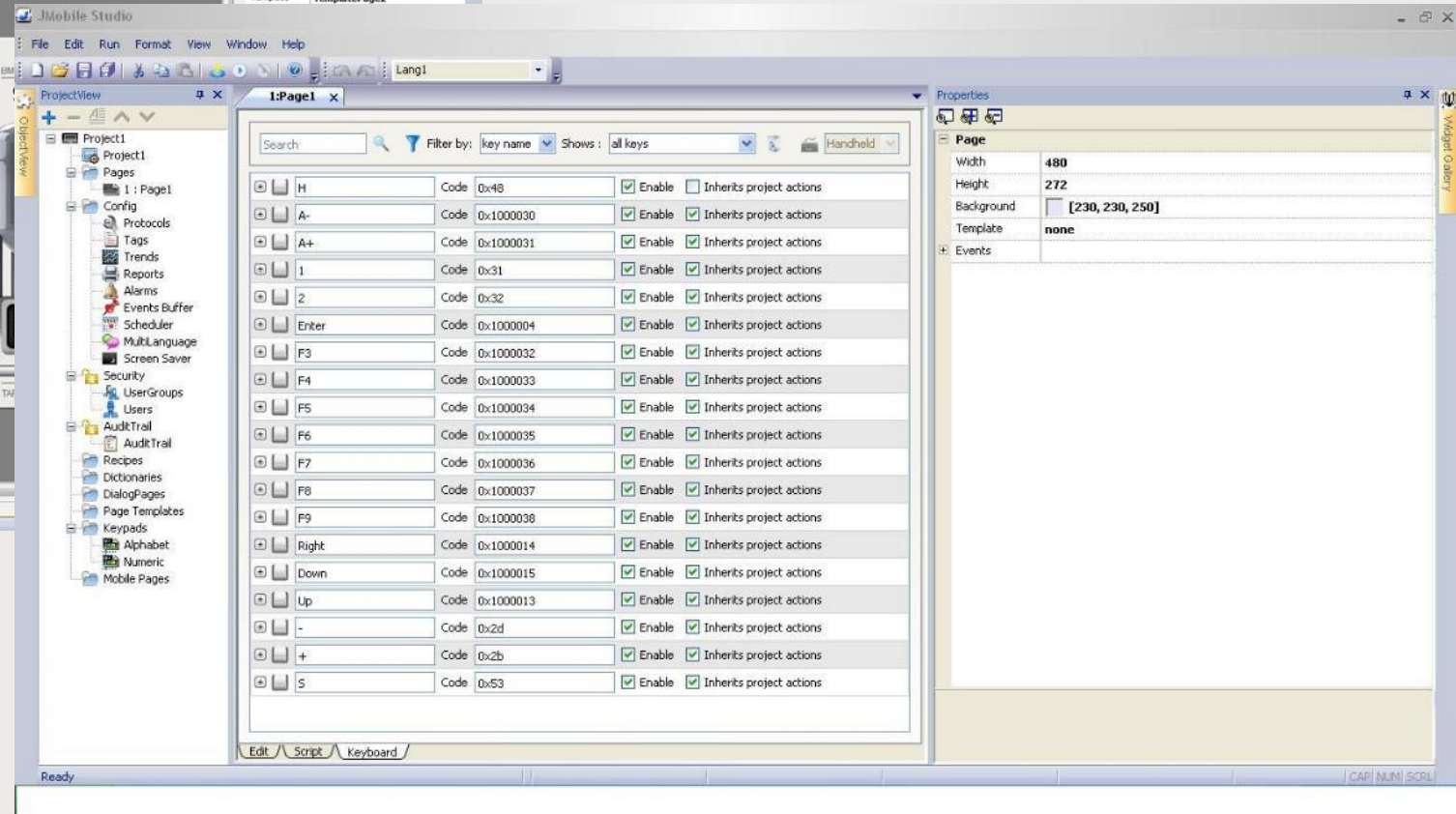
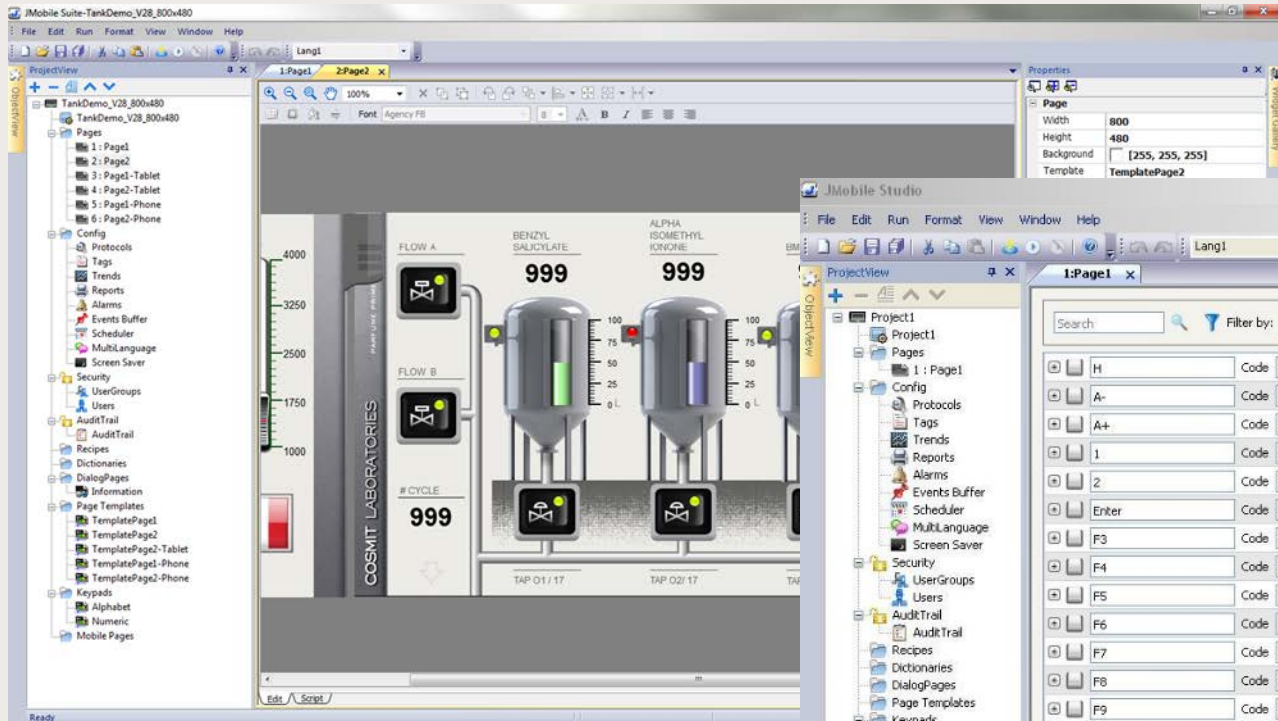
Chose your model and start defining the graphical lay out with **DRAG&DROP EDITING**



ONE POWER JMOBILE STUDIO

THE DRAG&DROP HMI EDITOR



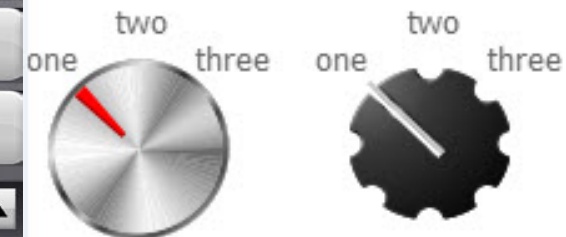
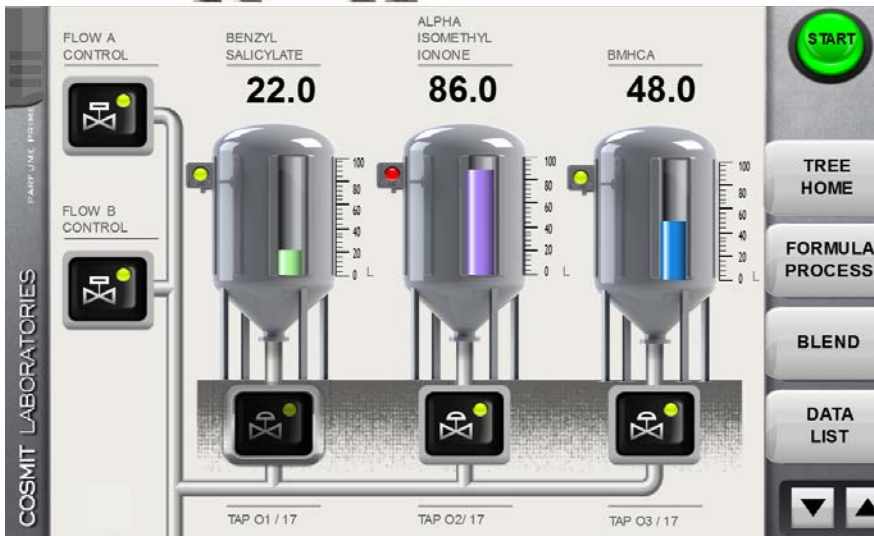
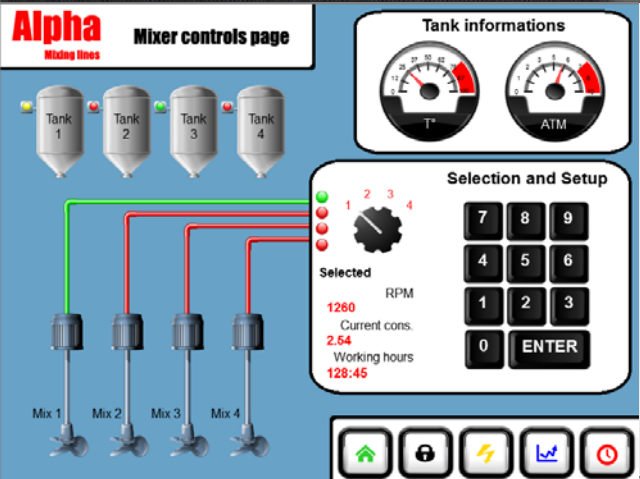
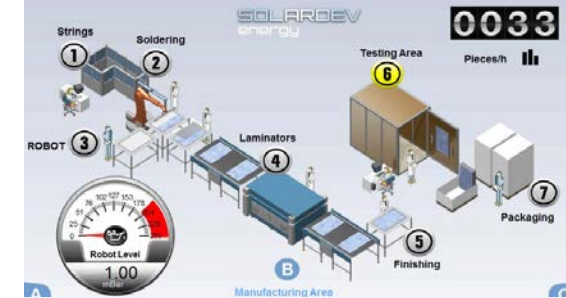
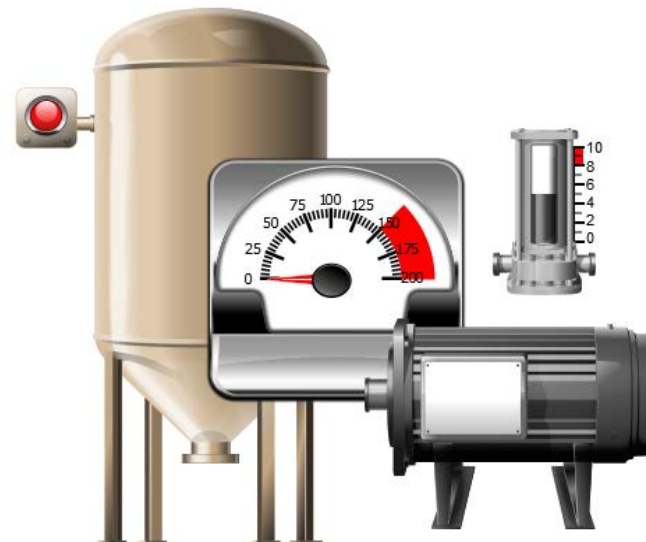


Assign variables, keys,  
potentiometers, handwheel,  
and everything else **WITHIN**  
**THE EDITOR**

ONE POWER JMOBILE STUDIO

FULLY AUTOMATED EDITING





SOME HMI EXAMPLES

COMPLETELY CUSTOMIZABLE

Axes quotes, distance to go, following error

Spindle feed %

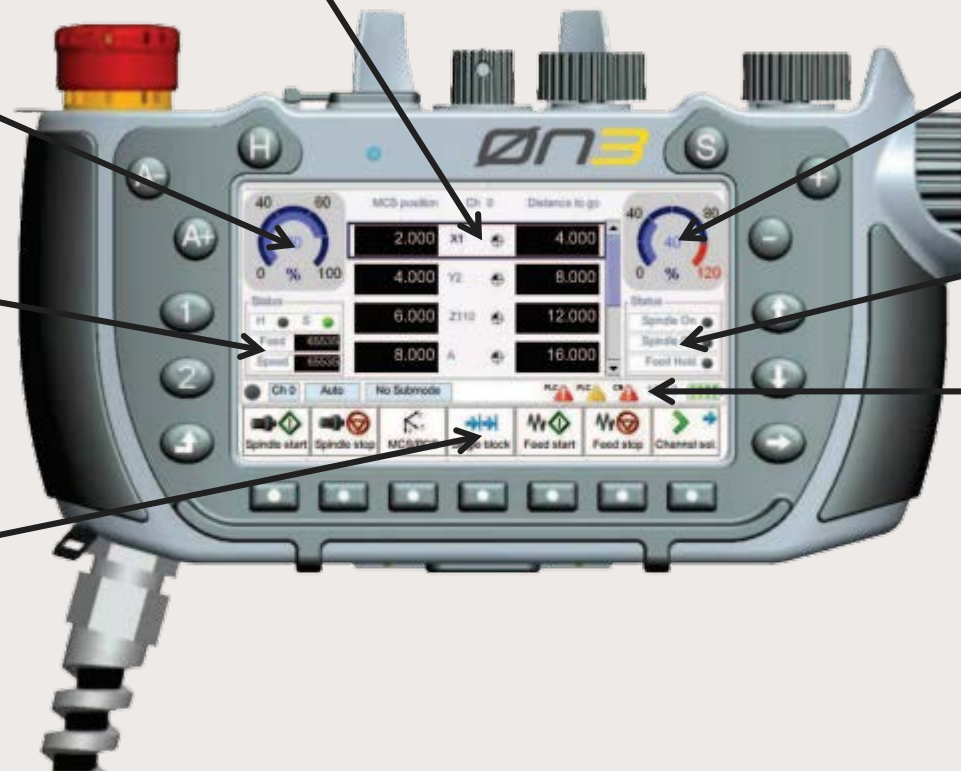
Axes speed %

Spindle state

Axes speed

PLC error messages

CNC specific commands



**MACHINE TOOL HMI EXAMPLE**

**COMPLETELY CUSTOMIZABLE**

# STANDARDS AND DIRECTIVES

## **DIRECTIVE**

2004/108/EC Electromagnetic Compatibility Directive (EMC)

## **STANDARDS (EMC)**

EN 61000-6-2 Electromagnetic Compatibility (EMC) Part 6-2:  
Generic Standards - Immunity for Industrial Environments

EN 61000-6-4 Electromagnetic Compatibility (EMC) Part 6-4:  
Generic Standards - Emission for Industrial Environments

## **Degrees of protection and environmental tests**

EN 60529 + A1 Degrees of protection provided by enclosures  
(IP code: 64)

## **Emergency Stop Push-button conforming to:**

IEC 60947-5-5, 6.2 Safety Lock Mechanism

IEC 60947-5-5, 5.2

IEC 60947-5-1, Annex K Direct opening action mechanism

EN ISO13850, 4.2, 4.3, 4.4

## **Enabling Device conforming to:**

IEC 60947-5-1

EN 60947-5-1

JIS C8201-5-1

IEC 60947-5-8 Low-voltage switchgear and controlgear

**EUROPEAN DIRECTIVES AND RELEVANT STANDARDS**

**COMPLIANT WITH RELEVANT DIRECTIVES/STANDARDS**

# HOW TO ORDER

# H3 COMMON ORDERING CODES

10 MT ETHERNET CABLE + JMOBILE=

20 MT ETHERNET CABLE + JMOBILE =

10 MT ETHERNET CABLE + JMOBILE + HANDWHEEL =

20 MT ETHERNET CABLE + JMOBILE + HANDWHEEL =

10 MT SERIAL CABLE + JMOBILE =

10 MT SERIAL CABLE + JMOBILE + HANDWHEEL =

10 MT ETH.+JMOBILE+HANDWHEEL+CIRC.CONNECTOR=

20 MT ETH.+JMOBILE+HANDWHEEL+CIRC.CONNECTOR=

CONNECTION BOX H3 + CIRCULAR CONNECTOR=

STANDBY STATION H3 – HOLDER =

+EP3H3REJ200YE1

+EP3H3REJ400YE1

+EP3H3REJ2H0YE1

+EP3H3REJ4H0YE1

+EP3H3RSJ200YE1

+EP3H3RSJ2H0YE1

+EP3H3REJ2H0YE2

+EP3H2REJ4H0YE2

+EP3H00000X0YA2

+EP3H00000B0YA0



CONNECTION BOX= +EP3H00000X0YA2



HOLDER = +EP3H00000B0YA0

COMMON ORDERING CODES

ETHERNET BEST FOR NEW APPLICATIONS

# CONCLUSIONS



# ONE H3 HANDHELDS SERIE + INTEGRATED JMOBILE SOFTWARE



- ✓ STUNNING DESIGN/ERGONOMICS
- ✓ MULTIPLE INTEGRATED DEVICES (KEYS/POTENTIOMETERS/HANDWHEEL/STATE SELECTOR)
- ✓ EASY TO PROGRAM
- ✓ EASY TO CONNECT
- ✓ 30 YEARS MANUFACTURING EXPERIENCE
- ✓ A-LEVEL SERVICE



powered by **EXOR**



THE PERFECT HMI CHOICE FOR YOUR MACHINE

INTEGRATED HW/SW FOR LOW DEVELOPMENT COSTS

# THANK YOU

(FOR FURTHER INFO SEE CONTACTS BELOW)

powered by **EXOR**



ON3 SRL VIA MONTE FIORINO, 9 - SAN GIOVANNI LUPATOTO (VR)  
ITALY - TEL +39 045 8774849

[info@0n3.eu](mailto:info@0n3.eu) / [0n3.eu](http://0n3.eu) / [jmobile.net](http://jmobile.net)