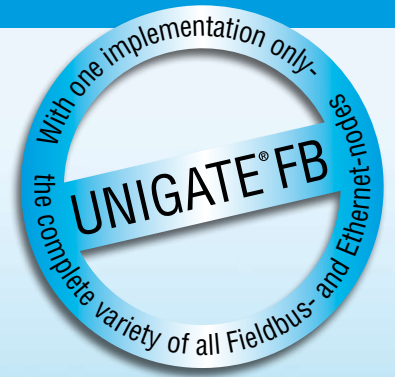


THE RESULT MUST AGREE –

BUS-TECHNOLOGY MADE BY DEUTSCHMANN!

# UNIGATE® FB

The flexible solution to  
connect incompatible networks



*The intelligent gateway for:*

CANopen

ETHERNET TCP/IP

PROFIBUS

PROFINET

LONWorks

INTERBUS

EtherCAT  
Technology Group

EtherNet/IP

MPI

DeviceNet

MODBUS TCP

ETHERNET  
POWERLINK  
STANDARDIZATION GROUP



Deutschmann Automation

AUDIN - 8, avenue de la malle - 51370 Saint Brice Courcelles - Tel : 03.26.04.20.21 - Fax : 03.26.04.28.20 - Web : <http://www.audin.fr> - Email : [info@audin.fr](mailto:info@audin.fr)

Cam Controls | Fieldbus Gateways | Industrial Ethernet Products

CANopen

DeviceNet

EtherCAT  
Technology Group

EtherNet/IP

ETHERNET  
POWERLINK  
STANDARDIZATION GROUP

ETHERNET TCP/IP



LONWorks

MODBUS TCP

MPI

PROFI  
BUS

PROFI  
NET

## The intelligent Gateway for the connection of industrial networks - UNIGATE® FB

### Connecting incompatible networks

In the field of automatic control many different Fieldbuses and Industrial Ethernet became established worldwide. Again and again the task of interconnecting these incompatible networks comes up. The UNIGATE® FB-series was created exactly for that task. The series contains Fieldbus-Slave as well as Industrial Ethernet versions.

The UNIGATE® FB is designed as DIN-rail module and contains the selected Fieldbuses or Ethernet in the mechanical variant carried out in the respective standard. Internally the product is realized by using two UNIGATE® IC-modules that are mounted on a carrier motherboard. By this modular structure all Fieldbus- and Ethernet-versions can be supplied, provided that the respective IC-modules are available. The number of available versions is growing steadily by the continuous development of new IC-modules e. g. in the Industrial Ethernet field.

In case of the series UNIGATE® FB, the data exchange between the Fieldbuses or Ethernet is realized through a Script. With the free PC-tool "Protocol Developer" this Script is generated and optimally adjusted to the final product and the requirements.

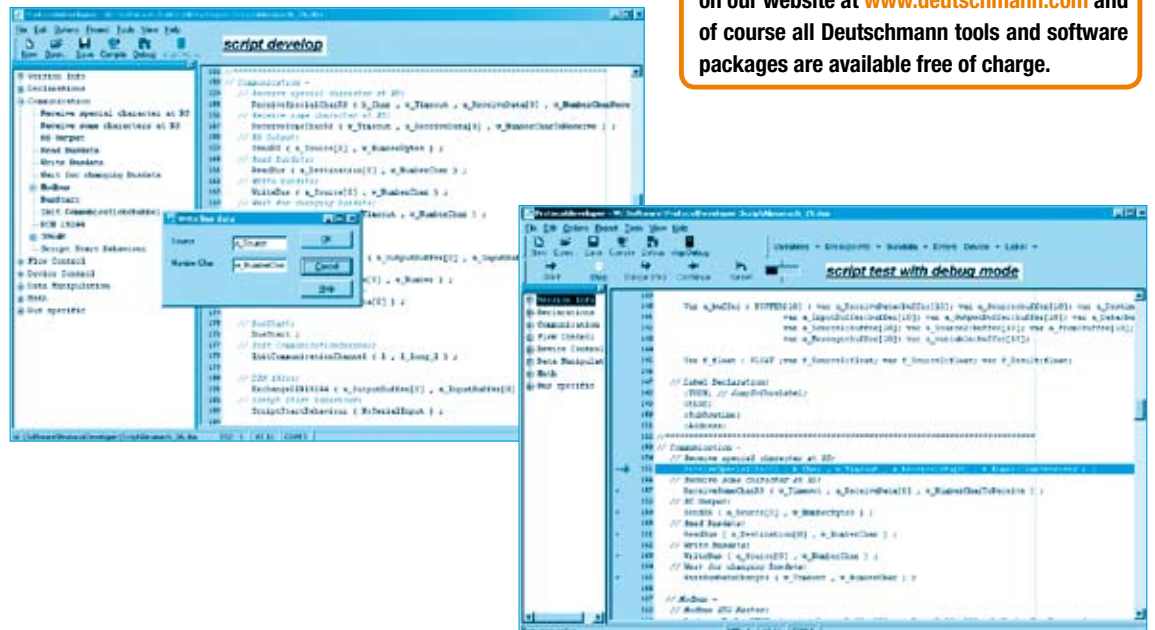
The Protocol Developer offers the opportunity to generate a protocol for the connection of the different networks with simple understandable commands in no time. It supports a great number of functions in order to bring the data that is to be received or sent into the correct "form". Mathematical or memory processing commands are known as from other programming languages and they are implemented in an understandable way for the layman. As a result, the different data structure and data length of the various Fieldbuses and Ethernet can be adapted very easily.

The chief attraction of this environment is, that the Protocol Developer contains a Debug-window, so that in case of connected Debug-hardware a real debugging, which is real operation, is possible. Here the usual functions, such as single step, operation and stop on a breakpoint are available. We attach great importance to data protection, for that special recognition routines can be activated on request.



### By the way

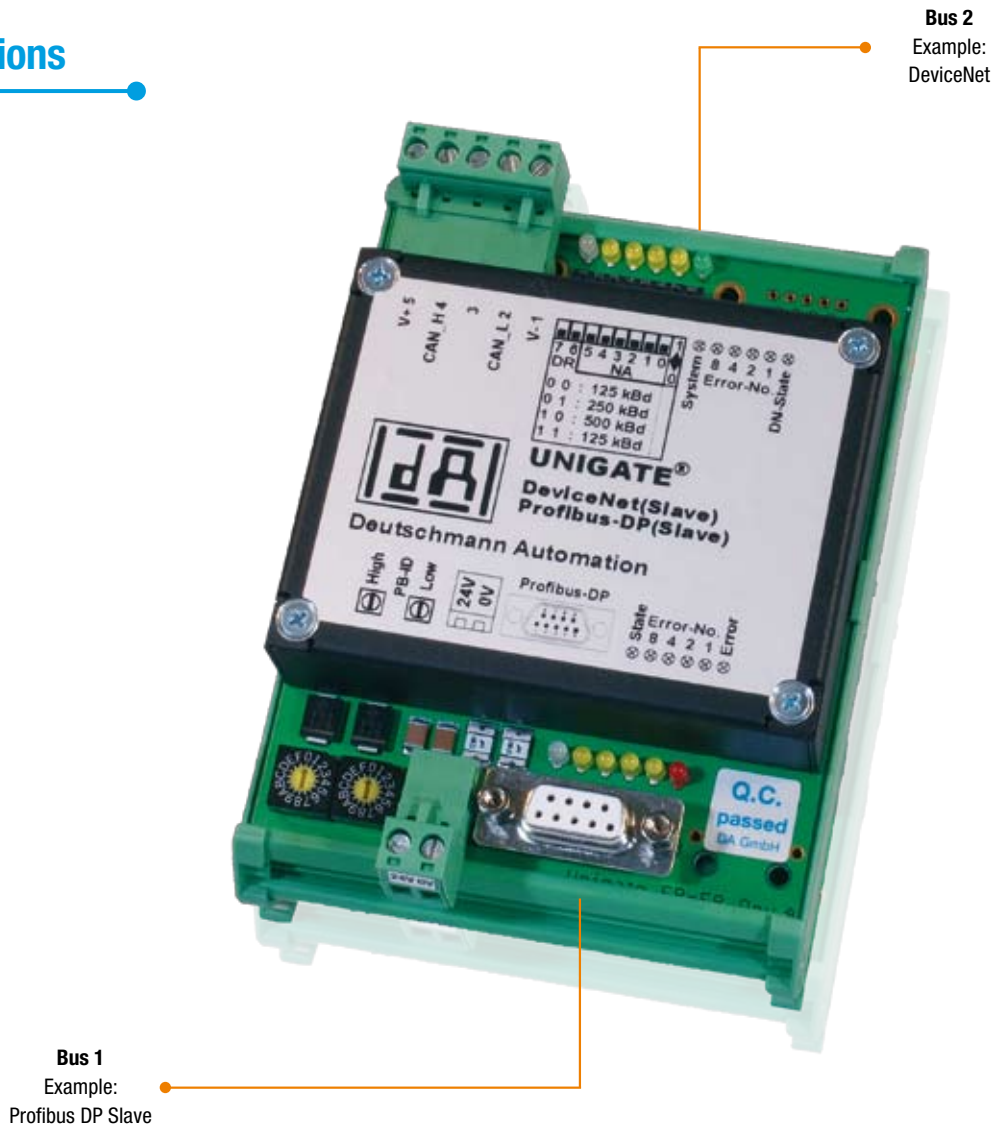
You can find examples for all Script commands on our website at [www.deutschmann.com](http://www.deutschmann.com) and of course all Deutschmann tools and software packages are available free of charge.



## General description

- All UNIGATE® FB-products have identical mechanical dimensions and the same structure, where the Fieldbus- or Ethernet-side corresponds to the standards or the commercially available versions.
- UNIGATE® FB-products offer you the full flexibility by free programming of a Script through the PC-tool „Protocol Developer”. This way also complex tasks can be realized.

## Applications



You receive the configuration tool WINGATE, the Protocol Developer for Script generation as well as extensive Script examples, device description files and much more free of charge.

For further information and the mentioned tools please log on to our website

[www.deutschmann.com](http://www.deutschmann.com)

## General technical data for all versions

■ Fixing	Standard device: DIN-rail module with integrated grounding Optional pure circuit board for installation on own mechanics Optional different housings in plastic, high-grade steel, aluminum pressur die casting to protection type IP67
■ Supply voltage	Through 2pol. screw-plug connector
■ Operating voltage	10.8 to 30 Volt
■ Protection type	DIN-rail module IP24, with additional housing to IP67
■ Dimensions	90 x 125 x 55 mm (B x H x D) for DIN-rail module
■ Temperature range	0°C – 55°C

Choose your product from currently 120 possible combinations

## Bus-specific technical data

Bus 1		
Bus	Bus data	Bus baud rate
CANopen	255 bytes I/O	1MBit/s, 500kBit/s, 250kBit/s, 125kBit/s,
DeviceNet	255 bytes I/O	500kBit/s, 250kBit/s, 125kBit/s,
EtherCAT	1486 bytes I/O	100MBit/s
Ethernet 10Mbit	1024 bytes I/O	10MBit/s
Fast Ethernet 10/100Mbit	1024 bytes I/O	10/100MBit/s
Ethernet/IP	500 bytes I/O	100MBit/s
Ethernet Powerlink	1541 bytes I/O	100MBit/s
MPI	240 bytes I/O	Adjustable via a script
Profibus	96 bytes I/O 244 bytes I/O	Automatic up to 12 MBaud
Profinet I/O-RT	1500 bytes I/O	100MBit/s

Accessory:  
We supply starterkits for the fast laboratory set-up,  
configuration cables etc.

Bus 2		
Bus	Bus data	Bus baud rate
CANopen	255 bytes I/O	1MBit/s, 500kBit/s, 250kBit/s, 125kBit/s,
DeviceNet	255 bytes I/O	500kBit/s, 250kBit/s, 125kBit/s,
EtherCAT	1486 bytes I/O	100MBit/s
Ethernet 10Mbit	1024 bytes I/O	10MBit/s
Fast Ethernet 10/100Mbit	1024 bytes I/O	10/100MBit/s
Ethernet/IP	500 bytes I/O	100MBit/s
Ethernet Powerlink	1541 bytes I/O	100MBit/s
Interbus	8 bytes I/O 32 bytes I/O	500kBit/s, 2MBit/s
LonWorks	62 NVT/s	78,1kBit/s
MPI	240 bytes I/O	Adjustable via a script
Profibus	96 bytes I/O 244 bytes I/O	Automatic up to 12 MBaud
Profinet I/O-RT	1500 bytes I/O	100MBit/s

Subject to technical change. We do not accept liability for any misprints or errors.