



DP1000

Industrial Decoder

Features

- Dual processor architecture
- 4 operating modes
- 2 standard serial interfaces
- All industrial communication protocols
- Easy set-up with **WINHOST™**
- Easy installation
- Removable electronic module
- Cabling system through terminal strip
- Cost effective

Applications

- Automatic identification on conveyors
- Quality control
- Work-in-Progress control
- Automatic document handling
- Packaging machines
- Chemical and biomedical analysis machines
- Automatic machines

General Description

The **DP1000** industrial bar code decoder combines decoder functions and easy installation in an economic solution.

The **DP1000** has a sophisticated electronic architecture, based on a Digital PreProcessor to elaborate input signals from the reader and high speed computing microprocessor for the management of all decoding and communication operations.

The **DP1000** identifies up to 6 different codes in the same reading phase, offers 4 operating modes and allows the use of 2 serial interfaces with all the most common industrial protocols. Configuring the decoder parameters is very simple and quick thanks to the set-up procedures completely controlled by **WINHOST™**, a user-friendly Windows based configuration program.

DP1000's characteristics adapt to any application need in minutes, selecting the codes to be read, the data output formatting and the driving I/O signals.

The cabling system through the terminal strip makes connection faster and easier, allowing considerable savings during installation operations.

The **DP1000** industrial decoder provides an innovative and economic solution in many application areas, guaranteed by Datalogic's high quality standards.

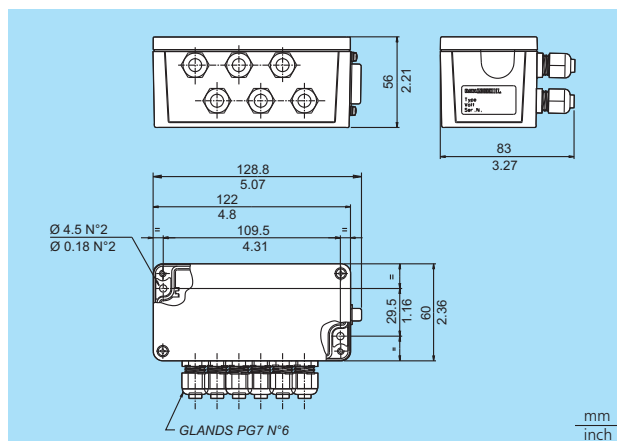
Models and Accessories

MODEL	COMMUNICATION INTERFACES			ORDER NO.
	RS232+RS232	RS232+RS485	RS232+20 mA C.L.	
DP1000-1000	•			911551000
DP1000-1100		•		911551010
DP1000-1200			•	911551020
ACCESSORIES				
PG110/DVE-1212A	Power block (110 Vac)			B9751057
PG220/DVE-1212A	Power block (220 Vac)			B9751027
CAB-318	LS50/LS6100 - DP1000/DP1100 connection cable			91A001000
ECK-1000	DP1000 easy configuration connector kit			91A001010

Specifications

POWER SUPPLY	10 to 30 Vdc
MAX. CONSUMPTION	2 W
MAIN INTERFACE	RS232 / RS485 Multidrop / 20 mA C.L.
AUXILIARY INTERFACE	RS232
BAUD RATE	150 to 19,200 bauds
INPUT SIGNALS	'Presence Sensor' (Transistor, NPN/PNP, Optocoupled)
OUTPUT SIGNALS	'No Read', 'Right', 'Wrong', (transistor NPN, open collector and emitter)
LED INDICATORS	Presence Sensor, Good Read, Tx/Rx, Power On
CONFIGURATION METHOD	Through the serial interface (WINHOST™)
BAR CODES	22 types including 2/5, Code 39, Code 93, Code 128, EAN/UPC, Codabar, EAN 128, Code 49
MULTI-LABEL READING	Up to 6 different codes in the same presence sensor phase
OPERATING MODES	'On Line', 'Serial On Line', 'Automatic', 'Test'
DIMENSIONS	129 x 83 x 56 mm (5.07 x 3.27 x 2.21 in)
WEIGHT	300 g ca. (10.6 oz)
CASE MATERIAL	ABS
OPERATING TEMPERATURE	0 to 50 °C (32 to 122 °F)
STORAGE TEMPERATURE	-20 to 70 °C (-4 to 158 °F)
HUMIDITY	90% non condensing
VIBRATION RESISTANCE	IEC 68-2-6 test FC 1.5 mm; 10 to 55 Hz; 2 hours on each axis
SHOCK RESISTANCE	IEC 68-2-27 test EA 30 G; 11 ms; 3 shocks on each axis

Dimensions



Compatible Datalogic Readers

MODEL	LS2100	LS4100	LS50	LS6100
DIMENSIONS (mm)	84 x 68 x 28	84 x 68 x 28	101 x 83.5 x 66	101 x 83.5 x 66
SCANNING SPEED (scans/s)	350	800 (1300)	500	800 (1000)
MAX. READING DISTANCE (mm)	300	400	1050	1800
MAX. DEPTH OF FIELD (mm)	250	360	900	1600
MAX. RESOLUTION (mm)	0.15	0.10	0.15	0.20

DATA LOGIC DL
Bar Code & More

We reserve the right to make modifications and improvements

Australia
Datalogic PTY. LTD.
Tel. +61 3/95589299
Fax +61 3/95589233
sales@datalogic.com.au

Austria
Datalogic Handelsges. MBH
Tel. +43 2236/25882
Fax +43 2236/258825
datalogic@ins.at

Denmark
Datalogic AB
Tel. +45 44/209970
Fax +45 44/209972
info@datalogic.se

France
Datalogic France S.A.
Tel. +33 1/60921111
Fax +33 1/69072631
dfrance@worldnet.fr

Germany
Datalogic GmbH
Tel. +49 7026/6080
Fax +49 7026/5746
info@datalogic.de

India
Datalogic (India) Private Ltd.
Tel. +91 80/5584440
Fax +91 80/5582896
datalogic@vsnl.com

Italy
Datalogic Trading S.r.l.
Tel. +39 02/2532542
Fax +39 02/2544007
headquarters@datalogic.it

Japan
Izumi Datalogic Co., Ltd.
Tel. +81 78/2723400
Fax +81 78/2722003
idlmrke@izumi-datalogic.co.jp

Netherlands
Datalogic Optic Electronics BV
Tel. +31 346/572888
Fax +31 346/568736
info@datalogic.nl

Spain
Datalogic France S.A.
Tel. +34 93/3221227
Fax +34 93/4394136
datalogic@sei.es

Sweden
Datalogic AB
Tel. +46 40/385000
Fax +46 40/181849
info@datalogic.se

United Kingdom
Datalogic UK Ltd.
Tel. +44 1582/464900
Fax +44 1582/464999
enquiries@datalogic.demon.co.uk

U.S.A.
Datalogic Inc.
Tel. +1 606/6897000
Fax +1 606/3344970
info@datalogic.com



Datalogic Quality Partner



These products are available through the European network of Datalogic Quality Partners.



A UDIN Composants & systèmes d'automatisme

Siège : 7 bis rue de Tinqueux - 51100 Reims - France - Tel : 03.26.04.20.21 - Fax : 03.26.04.28.20
Agence Nord : 66 rue J.Baptiste Lebas - 59910 Bondues - France Tel : 03.20.27.99.84 - Fax : 03.20.27.99.85

Web : <http://www.audin.fr> - Email : info@audin.fr