



Bonfiglioli

Vectron

BMI series

Bonfiglioli Human Machine Interfaces for complete Machine Solutions



Bonfiglioli

power, control and green solutions

Power, control and green solutions



BMI series

Bonfiglioli Human Machine Interfaces for complete Machine Solutions

Bonfiglioli - well known as specialist for motors, gears and drives follows the requirements of many machine builder requesting to buy consistent motor, drives and automation solutions out of one hand. Thanks to a thorough knowledge of all areas of industry, Bonfiglioli can offer customers the products they need to meet all possible requirements. Our group's range of gear motors, drives and planetary gearboxes is the widest on the market today. Our top quality, integrated products can be tailored to meet individual customer needs and to provide the perfect solution for even the most complex projects. This makes Bonfiglioli a perfect partner for all automation solutions for basic applications. The BMI is a cost efficient visualization and in combination with the control function of the inverter the BMI represents an effective automation solution. Bonfiglioli provides with the BMI a complete solution which includes the scalable drive technology, synchronous and asynchronous motors and a wide range of gear technology from simple helical gear motors to precise planetary drives.

Main features

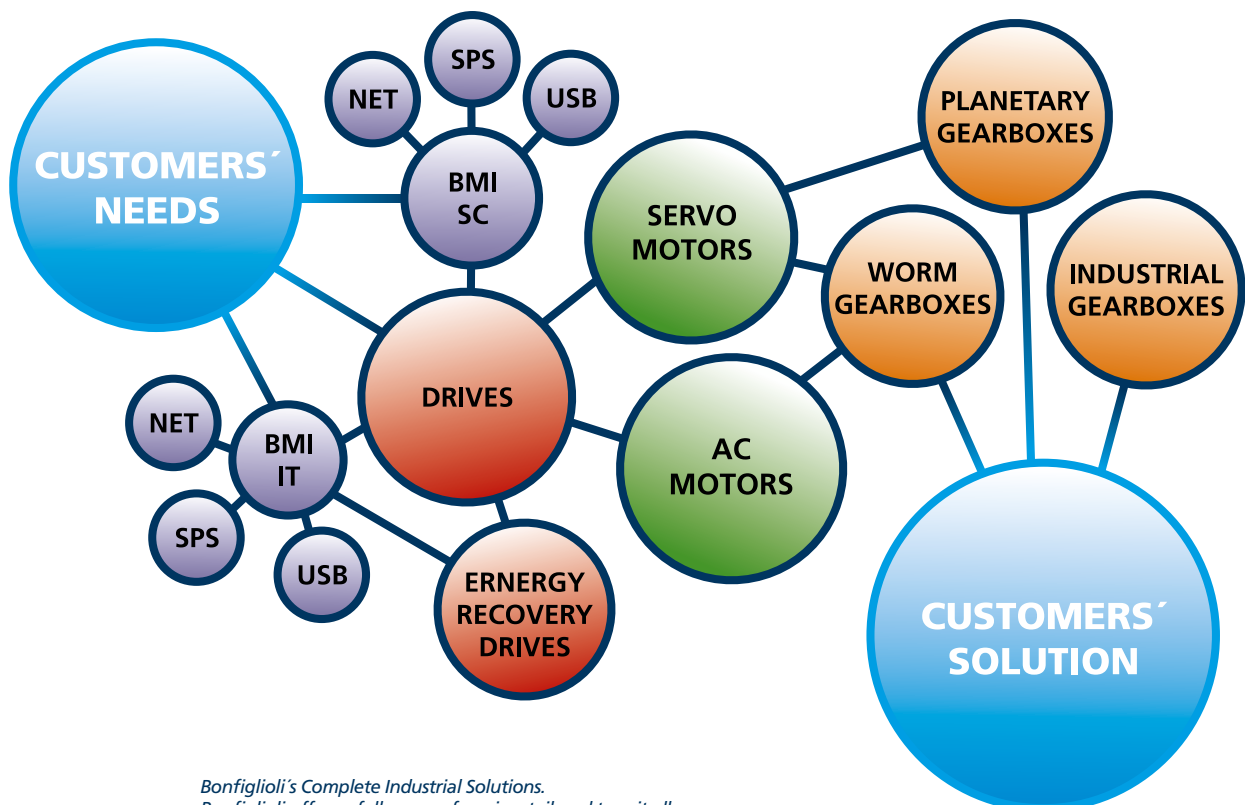
- Cost effective Human Machine Interface solution
- 3 frame sizes of 3,5, 7 and 10 available
- BMI direct drive connection
- Ethernet - RS232/485 communication port as standard
- CAN Network communication for BMI-IT
- IP66 Front plate



BMI IT series



BMI SC series

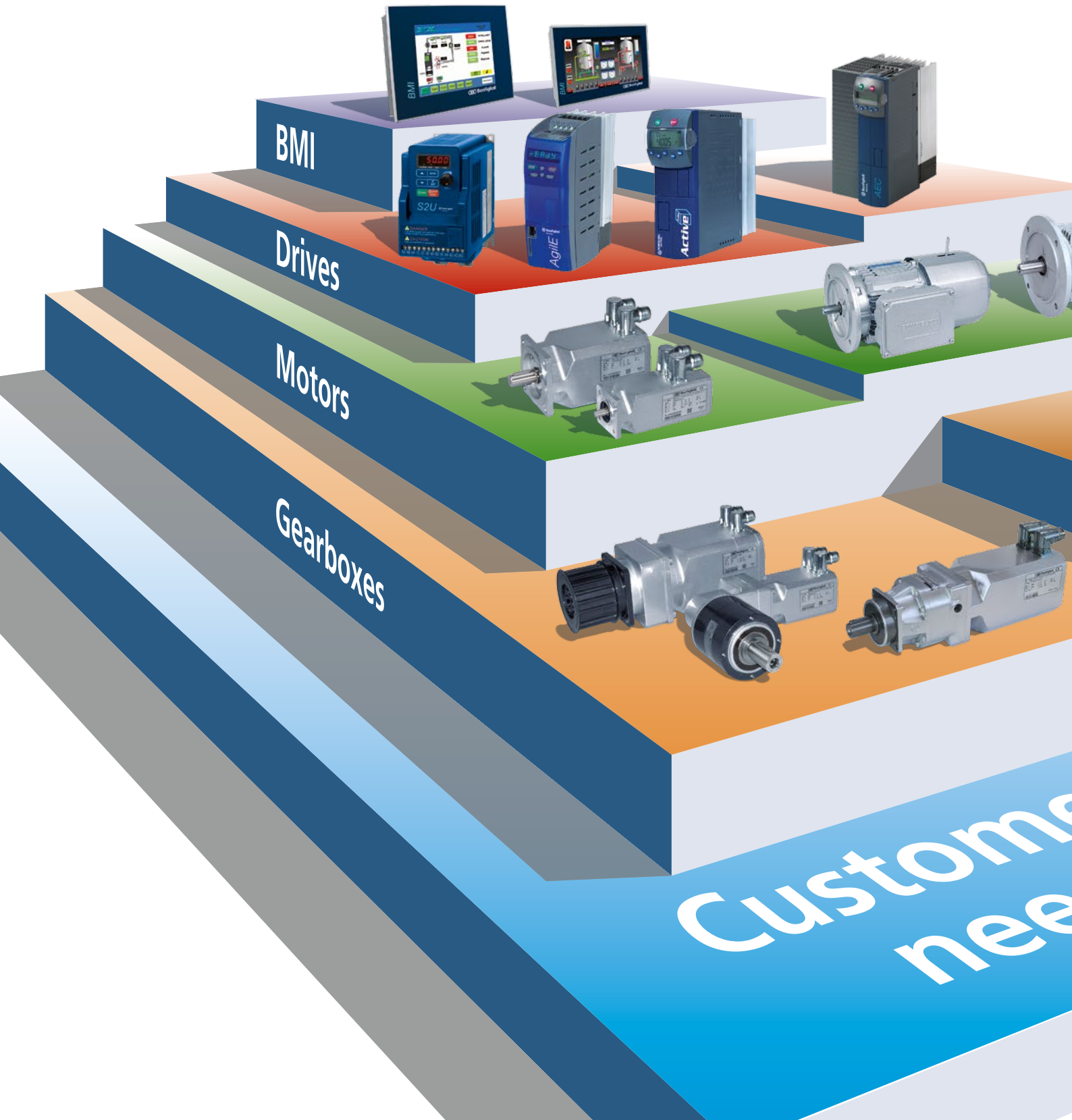


*Bonfiglioli's Complete Industrial Solutions.
Bonfiglioli offers a full range of services tailored to suit all customers wishes. Bonfiglioli, One-Stop Shop for your application!*

Complete Machine Solutions

Bonfiglioli is a global player in the field of industrial automation by providing customer with complete machine solutions rather than simply components. Complete machine solutions consisting of new BMI Human machine interface series in combination with the drive solution that fits to the application requirements serve a perfect solution for customers where machine motion is the focus of the application.

BMI is the simple and cost effective solution where the machine can be easily controlled by the integrated PLC functionalities in the Active Cube and AgilE drives and the complete visualization and operation is handled via the BMI. With integrated CAN communication interface BMI-IT is also able to be integrated into more complex machine architectures and communication requests.



The wide product range covers all gearbox technologies starting from cost effective worm and helical gearboxes up to planetary gearboxes with highest efficiency and effectivity. For motors Bonfiglioli offers the right technologies, high dynamic & efficient Synchronous motors as well as energy efficient asynchronous motors for standard applications.

The possibilities of full customization of all products, application expertise in many many applications in combination with global services and support make Bonfiglioli your perfect partner for global machine solutions.

BMI

The BMI SC and IT series represent the new series of operator terminals by Bonfiglioli, able to offer high performance and maximum functions

Drives

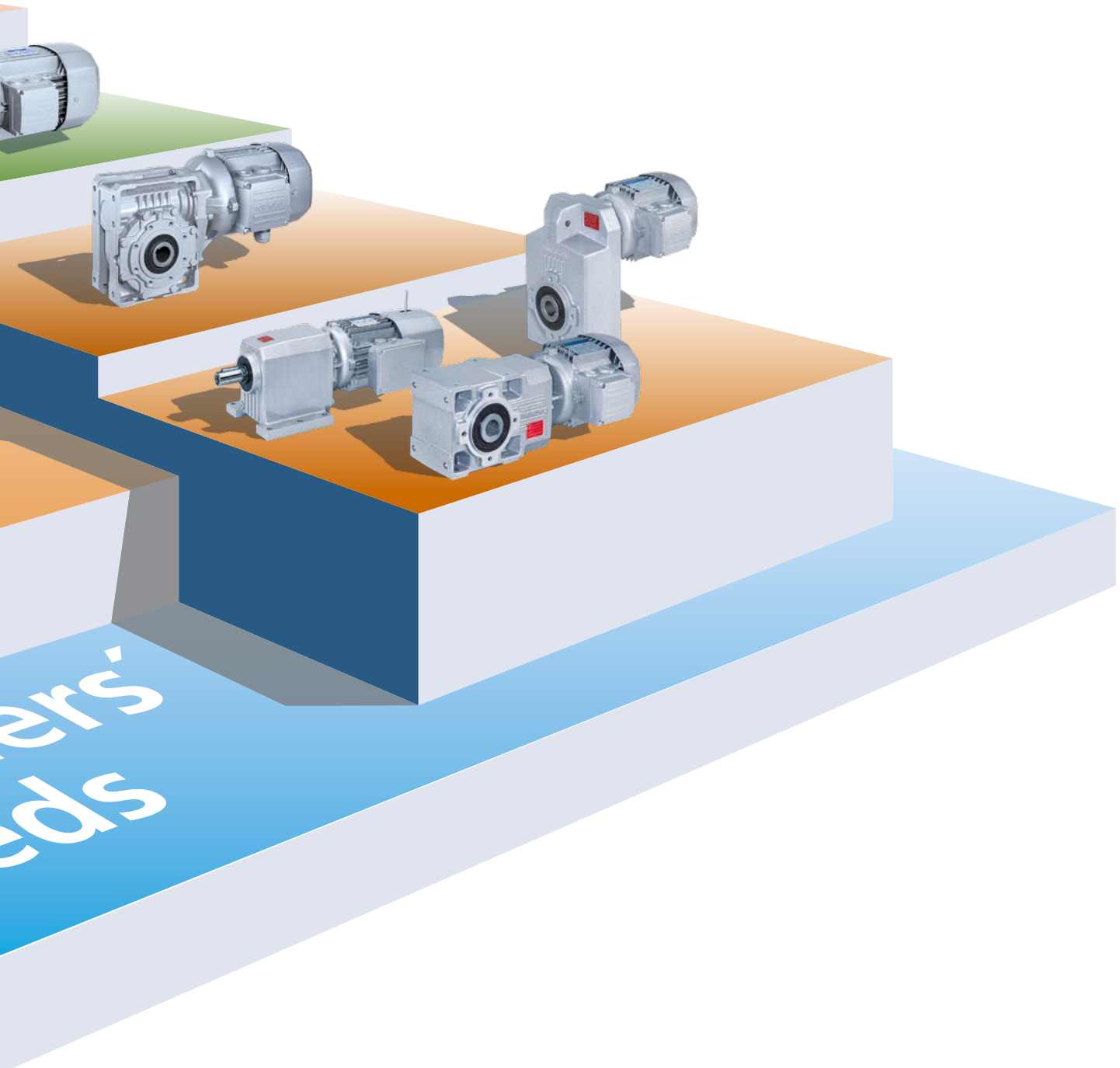
A complete range of drives for any industrial, automation, servo and energy recovery applications.

Motors

A comprehensive range of AC and DC motors for industrial and servo applications.

Gearboxes

A complete range of gearmotors, gearboxes and mechanical speed variators for light duty industrial automation applications.



BMI SC - Simple Control

The BMI SC range (Simple Control) represents the new series of entry level operator terminals by Bonfiglioli, able to offer high performance and maximum functions at highly competitive prices. The SC product range is made entirely of a chassis in ABS plastic, a highly resistant material that

gives the terminal extreme sturdiness, guarantee durability and high resistance to scratches and impacts.

The high resolution colour display is unique in cost / value parameters. RS 232/485 as well as Ethernet communication are integrated.



Key Features

- 3 Display sizes – 3.5", 7" and 10.1"
- Robust ABS plastic chassis
- Front panel in IP65
- High resolution 480 x 272 up to 1024 x 600 Pixels
- 65.536 Colours
- Ethernet - RS232/485 communication port as standard
- CE certification

Simple & Cost effective Drive solution



BMI - SC



Serial point to point communication
Simplest and cost effective



Inverter

BMI IT - Integrated Solutions

Bonfiglioli BMI devices with performances ever seen anymore? IT product series is the solution. The high performance levels, the greater connectivity with the field and external devices as well as the excellent quality-to-price ratio, make the IT series the best solution available on the market. "Product designed for your business.." The IT family offers a range of products

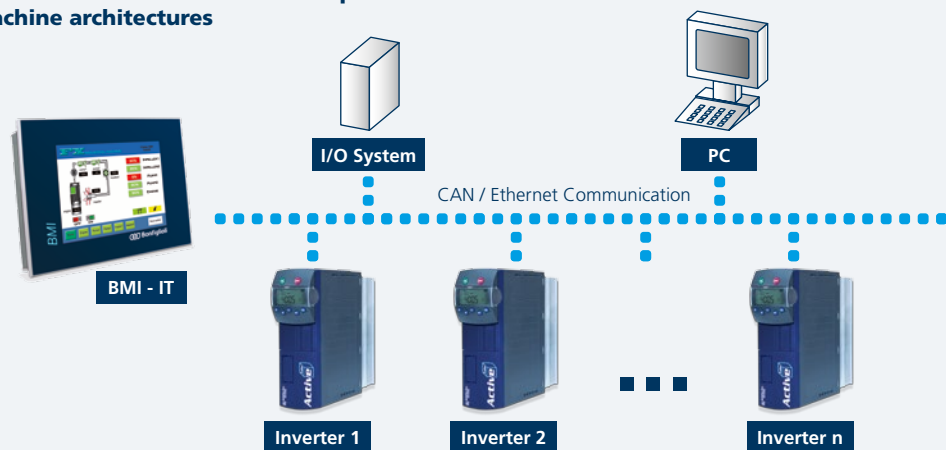
responding to all needs, from the economical 4.3" screens with tones of grey or colors to the powerful TFT screens, up to 15" in size. IT operator terminals with STAINLESS steel front panel designed especially to guarantee perfect operation and maximum durability of the terminal in extreme and difficult work



Key Features

- 3 Display sizes – 4.3", 7" and 10.4"
- Cast aluminium chassis, backside stainless steel
- Front panel in IP66
- High resolution 480 x 272 up to 800 x 480 Pixels
- 65.536 Colours
- Ethernet - RS232/485 - CAN as standard
- DNV, cULus , Atex certification

Network Communication for complex machine architectures



BMI SC series features

No moving mechanical parts,
(ie: fans and Hard disks)

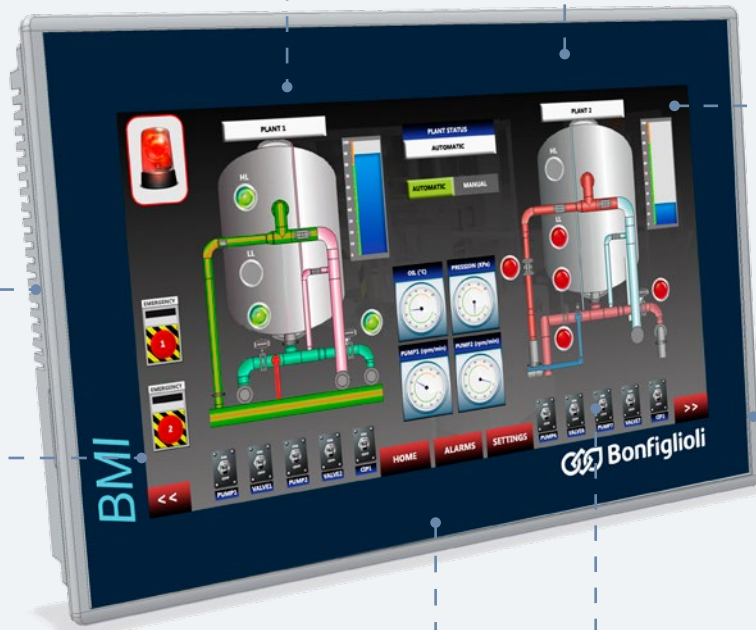


IP65 protection of
the entire front part

IP65

10/100 Mbit
Ethernet port
(RJ-45) for
communicating
with the field and
for programming

State of the
art industrial
displays with
strong backlight
and White-LED
technology



ABS plastic chassis

Slot for Secure Digital
and MultiMedia
Card (MMC) memory
connection



USB port (host) to connect
other devices (keyboard and
mouse) and USB pen drives to
import/export data

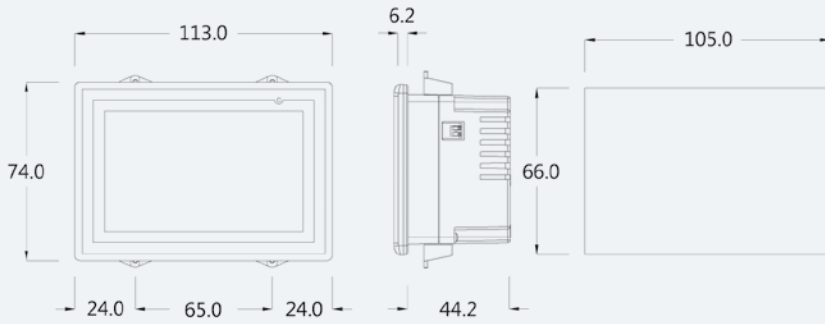
Front panel touch
screen

Certifications

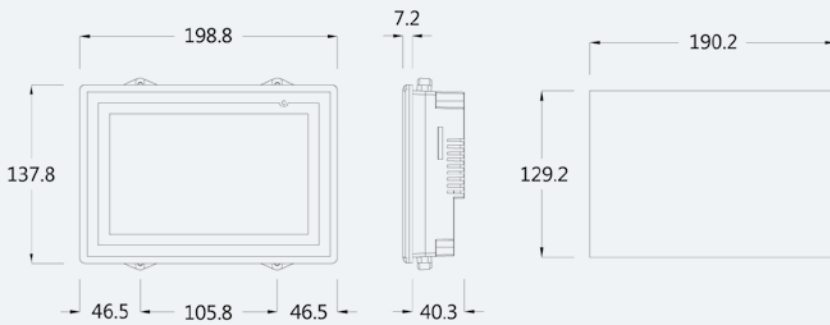
All Bonfiglioli products in the SC
family comply with CE standards.



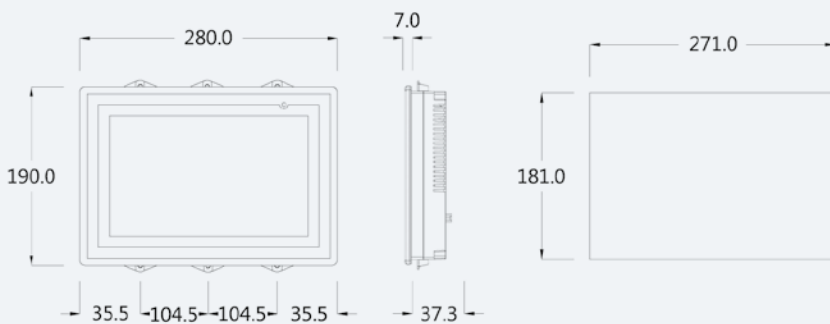
Dimensions BMI-SC103A



Dimensions BMI-SC107A

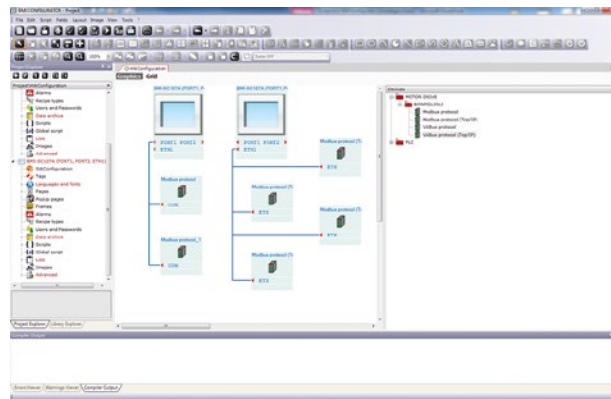


Dimensions BMI-SC110A



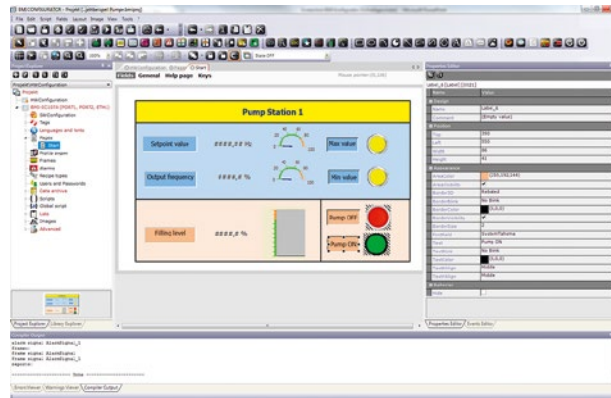
BMI SC series	BMI-SC103A	BMI-SC107A	BMI-SC110A
Display			
Size	3,5" Wide	7" Wide	10,1" Wide
Technology	Graphic LCD TFT 65.536 colors		
Touch screen	Analog		
Backlight	White LED		
Resolution	480 x 272 pixel	800 x 480 pixel	1024 x 600 pixel
Life (min a 25°C)	30.000 hours		
CPU and memory			
Processor	ARM		
RAM	64 MB		
Flash	64 MB		
Interfaces			
First port	Port 1 (RS232/RS485/COM0)	Port 1 (RS232/RS485/COM0)	Port 1 (RS232/RS485/COM0)
Second port	-	Port 2 (RS232/RS485/COM0)	Port 2 (RS232/RS485/COM0)
USB Host port	1 x v 1.1		
USB Device port	-	1 x v 1.1	1 x v 1.1
Card Bus slot	-	1 x Secure Digital/MMC	1 x Secure Digital/MMC
Network	1 x Ethernet 10/100 Mbit - Rj45		
Dimensions			
External (W/D/H)	113,0 x 74,0 x 50,4 (mm)	198,8 x 137,8 x 47,5 (mm)	280,0 x 190,0 x 40,3 (mm)
Cut-out (W/H)	105,0 x 66,0 (mm)	190,2 x 129,2 (mm)	271,0 x 181,0 (mm)
Technical specifications			
Chassis	ABS Plastic		
Power supply	20...28 Vdc		
Power consumption	~ 3 W (24 Vdc) DC	~ 5 W (24 Vdc) DC	~ 8 W (24 Vdc) DC
Hardware Clock	Battery (minimum durability 5 years)		
Operating temperature	-10...+50 °C		
Storage temperature	-20...+60 °C		
Humidity	10...90% (non condensing)		
Weight	~ 0,3 kg	~ 0,8 kg	~ 1,4 kg
Protection level	IP 65 frontal		
Certifications	CE		

BMI Configurator software



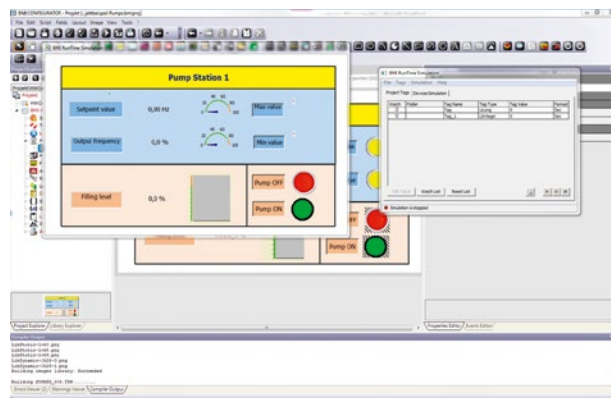
Hardware configuration

Creating a hardware configuration. The BMI's to be used are defined as well as the transmission protocol for the data transfer between BMI and inverters.



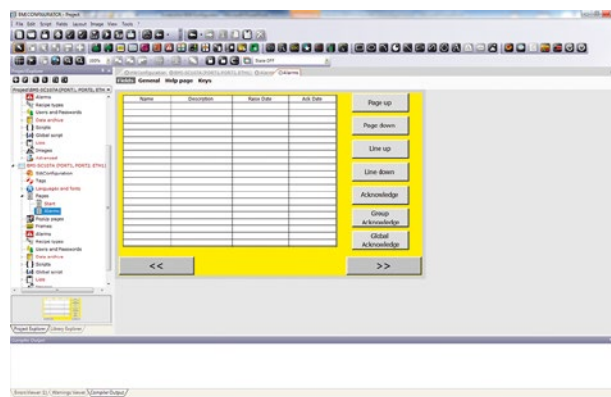
Wide range of tools

For creating of an application page a wide range of tools is available.



Test function

An integrated off-line test function provides a quick functionality check and visual impression of application pages.



Alert messages

For alerts own pages can be defined.

BMI IT series features

Option to use any terminal in the IT range both horizontally and vertically



IP66 protection of the entire front part

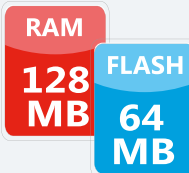
IP66

No moving mechanical parts, (ie: fans and Hard disks)



State of the art industrial displays with strong backlight and White-LED or CCFL technology

RAM memory up to 128 MB and internal Flash memory up to 64 MB



4 or 5-wire resistive touchscreen that ensures proper function even with superficial damage to the surface

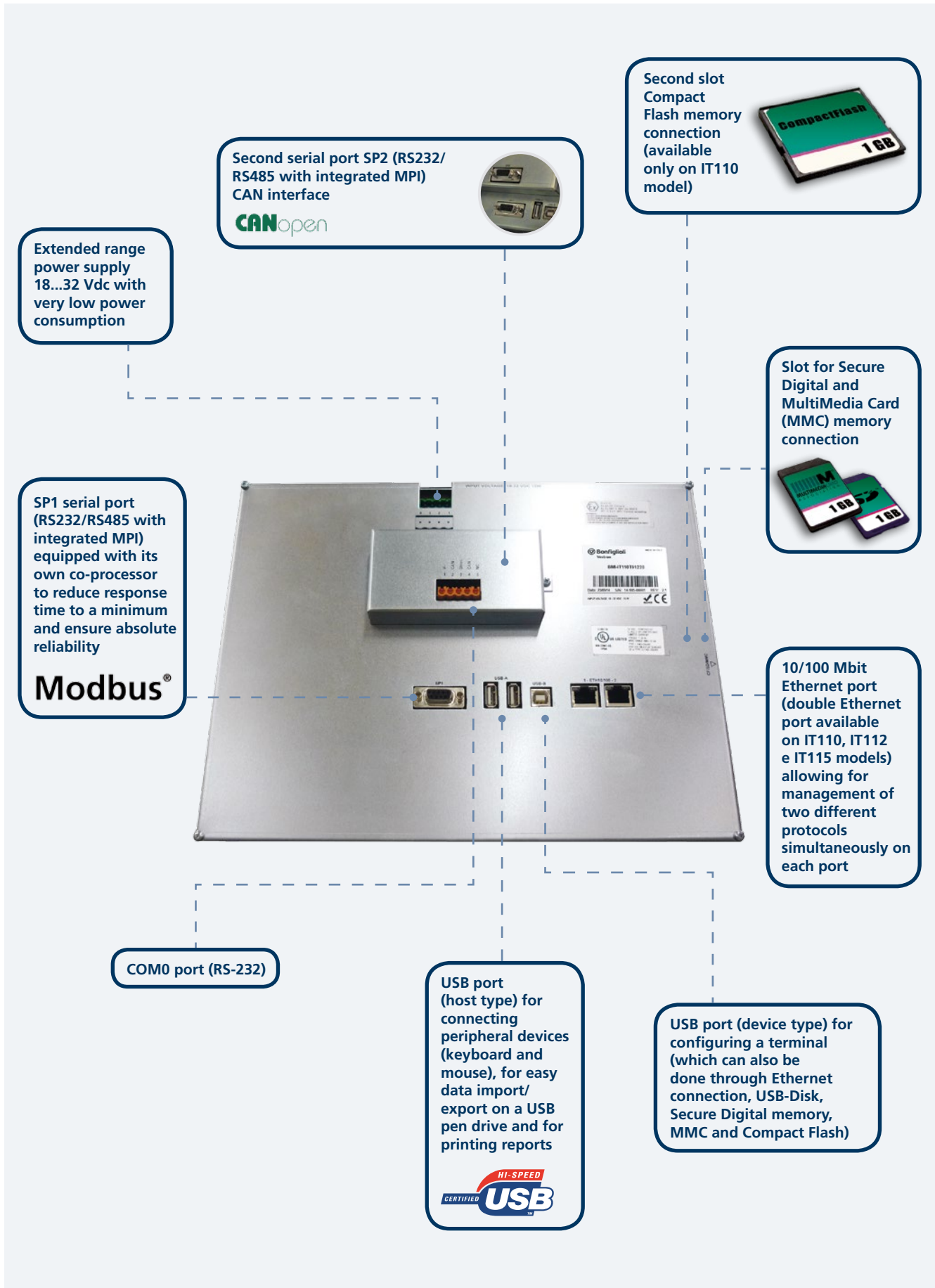
Wide Viewing Angle Technology allowing perfect view of the display from any angle



Certifications

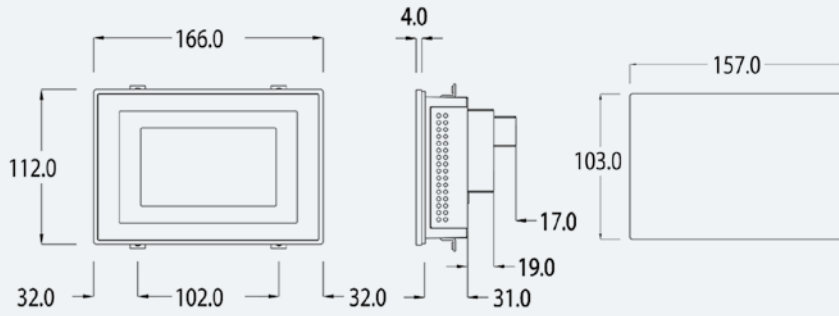
All Bonfiglioli products in the IT family comply with CE standards and are c-UL and UL-us (UL508 CSA C22.2 No. 14-M95), ATEX (Zone 2/22, category 3 G/D) and DNV certified, thereby ensuring total system safety and protection.



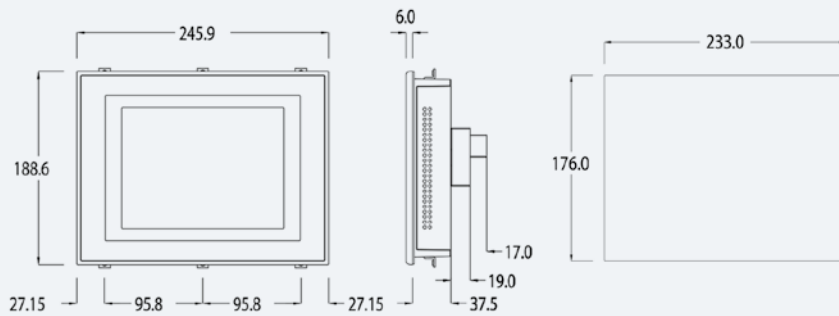


BMI IT series

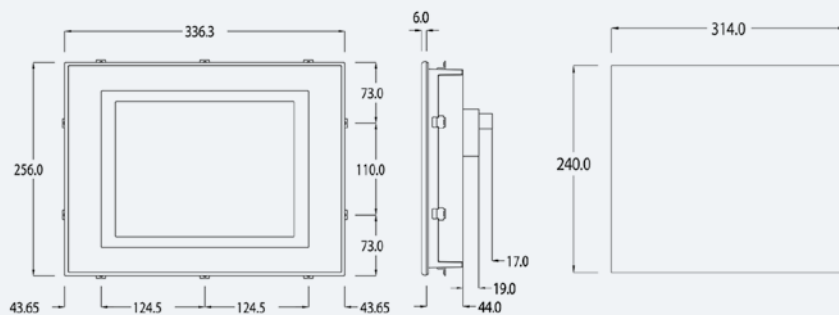
Dimensions BMI-IT104 CAN



Dimensions BMI-IT107W CAN



Dimensions BMI-IT110 CAN



BMI IT series	BMI-IT104 CAN	BMI-IT107W CAN	BMI-IT110 CAN
Display			
Size	4,3" Wide	7"	10,4"
Technology	Graphic LCD 65.536 colors	TFT Graphic LCD 65.536 colors	
Touch screen	Analogic Touch Screen TFT	Analog touch screen	
Backlight	White LED	CCFL	
Resolution	480 x 272 pixel	800 x 480 pixel	640 x 480 pixel
Life (min a 25°C)	50.000 hours	40.000 hours	30.000 hours
CPU and memory			
Processor	Intel PXA270 312MHz	Intel PXA270 520MHz	Intel PXA270 520MHz
RAM	64 MB		128 MB
Flash	32 MB		64 MB
Interfaces			
First port	Port 1 SP1 (RS232/485)	Port 1 SP1 (RS232/485), COM0	Port 1 SP1(RS232/485)
Second port	Port 2: SP2 (RS232/485)	Port 2: SP2 (RS232/485)	Port 2: SP2 (RS232/485)
CAN port	1	1	1
USB Host port	1 x v 1.1	1 x v 1.1	2 x v 1.1
USB Device port	-	1 x v 1.1	1 x v 1.1
Card Bus slot	-	1 x Secure Digital	1 x Secure Digital
Compact Flash slot	-	-	1 x Compact Flash
Network	Ethernet 10/100 Mbit - Rj45	Ethernet 10/100 Mbit - Rj45	2 x Ethernet 10/100 Mbit - Rj45
Dimensions			
External (W/D/H)	166 x 112 x 31 (mm) (50 with 2 serial ports)	245,9 x 188,6 x 37,6 (mm) (56,6)	336,3 x 256 x 43,8 (mm) (62,9 with 2 serial ports)
Cut-out (W/H)	157 x 103 (mm)	233x176 (mm)	314x240 (mm)
Technical specifications			
Chassis	Cast aluminium chassis, backside stainless steel		
Power supply	18...32 Vdc		
Power consumption	~ 7 W (24 Vdc)	~ 10 W (24 Vdc)	~ 15 W (24 Vdc)
Hardware Clock	Supercapacitor 72h		
Operating temperature	0...+50 °C		
Storage temperature	-20...+60 °C		
Humidity	85% (non condensing)		
Weight	~ 0,6 kg	~ 2,0 kg	~ 2,8 kg
Protection level	IP 66 front		
Certifications	CE, cULus , Atex (Group II - cat.3 G D - zone 2/22)		

Bonfiglioli Drives Solutions

Active Cube Solution & Servo Drive

Versatility, promptness, accuracy.

A full series of solution & servo drives, compact and flexible, dedicated both to high demanding industrial automation systems and to motion control architectures, in match with Bonfiglioli servomotors.

Power Range (ACU201)

0.25 - 9.2 kW / single or three-phase 200 V - 240 V / 50 Hz - 60 Hz ($\pm 10\%$)

Power Range (ACU401)

0.25 - 400 kW */ three-phase 360 V - 480 V / 50 Hz - 60 Hz ($\pm 10\%$). *1200 kW in parallel connection

Power Range (ACU601)

160 - 400 kW */ three-phase 690 V / 50 Hz - 60 Hz ($\pm 10\%$). *1200 kW in parallel connection

Type of Control

Selectable Vector control function: sensor-less control, sensor-less fieldoriented control, field oriented control with speed sensor, field oriented control of synchronous servomotors with speed/position sensor

Overload Capacity

200% for 1min (size 01 and 03) / 150% for 1min (other ratings), Shorter overload: 200% for 1sec all ratings

Switching Frequency

2, 4, 8, 12, 16 kHz

EMC Filter

Integrated up to 9.2 kW (EN 61800-3)

Main Standard Hardware features

Integrated safe torque off function, External 24Vdc supply for control board and electronics, Integrated dynamic braking module, DC link connection Standard



encoders interface, Resolver module for feedback acquisition from Bonfiglioli servomotors, Motor temperature monitoring, Plug-in power terminals (up to 3kW), Plug-in and programmable control terminals, 6 digital input, 1 multifunction input, 1 digital output, 1 multifunction Output, 1 relay output (changeover contact)

Optional Expansion Modules

Expansion of analog, digital inputs and outputs, additional encoder or resolver input, repetition frequency output, System bus

Optional Communication Modules

Profibus-DPV1, CANopen, RS232, RS485, DeviceNet, EtherCAT®, Profinet, VABus/TCP (*), Modbus TCP (*), EtherNet IP. (*) optional 2 ports

Optional Keypad

Removable keypad KP500 with copy function, Cabinet mounting kit and handheld for keypad

S2U

Plug & Play frequency inverter

The Ideal drive for your lean application projects.

Intuitive and simple, but powerful and effective. S2U - Plug & Play frequency inverter is the Bonfiglioli Vectron compact Inverter for efficient speed and torque vector control of electric motors, up to 2.2kW. The simple installation and use, together with connectivity and outstanding range of functions, make it the the perfect drive for the control of those applications where productivity and short time to market are critical.

Power range (S2U 230)

0.25 - 3.0 kW 1-Phase 200 - 240V / 50 - 60Hz (+10, -15%)

Type of control

V/F control with automatic torque compensation function

Overload capacity

150% for 60s



Switching frequency

1-16 kHz

Enclosure

IP20

Agile

Standarddrive

Innovative, eco-friendly, user-friendly.

Agile series provide in a sensorless vector inverter innovations able to boost plant efficiency through open loop vector control of brushless motors, MMC memory cards and web control. Agile smart sensorless frequency inverters are easy to install, program and quick to start-up without the needs of specialized resources.

Power range (AGL402)

0.25 - 11 kW / three-phase 320 V ... 530 V
50 - 60 Hz ($\pm 10\%$)

Power range (AGL202)

0.12 - 3 kW / single-phase 200 V ... 240 V
50 - 60 Hz ($\pm 10\%$)
0.25 - 7.5 kW / three-phase 200 V ... 240 V
50 - 60 Hz ($\pm 10\%$)

Motor compatibility

Two types of motor:
Asynchronous AC motors
Permanent magnet synchronous (brushless) motors

Type of control

Selectable control function:
V/f control for asynchronous motors
Sensor-less vector control for asynchronous motors
Sensor-less vector control for brushless motors

Degree of protection

IP20 (EN 60529)

Main hardware features

Power supply from common DC bus, Integrated braking module, Short circuit / ground fault



protection, Integrated Safe Torque Off safety system, Plug-in and programmable control terminals, 6 digital inputs, 2 multifunctional A/D inputs, 1 multifunctional I/O, 1 digital output, 1 multifunctional A/D/pulse output, 1 relay output (alarm), available power outputs: +24 V DC, +10 V DC, optional separate 24 V DC electronic power supply, standard serial interfaces: RS-232, RS485, Systembus, Integrated Modbus

Optional expansion modules

Resource Pack memory card

Optional communication modules

Profibus-DPV1, CANopen, RS232, RS485, DeviceNet, EtherCAT®, ProfiNet, Ethernet VA BUS TCP (*), Modbus TCP (*), EtherNet IP. (*) optional 2 ports

AEC

Active Regenerative Power Supply System.

The innovation that regenerates energy.

Decades of experience in electronic industrial drives and renewable energy have enabled Bonfiglioli Vectron to offer an effective solution for recovering braking energy. This solution comes in the form of the new Active Regenerative System inverters (AEC). In a large number of electrically.

Power Range

9.7kVA to 173.2kVA, 3-phase 320V ... 440V
45Hz... 66Hz

Operating Mode

Control mode selection:
Input and regenerative power with sinusoidal current
Regenerative power with square-wave current

Enclosure

IP20 (EN 60529)

Main Hardware Features

DC link connection, Adjustable input and regenerative power control, Short-circuit and earth-fault resistance, Configurable control terminals



Bus Communication

RS232, RS485, Profibus-DP, CANopen

Operating Panel

Removable KP500 keypad

BMD series

Permanent Magnet AC servomotors

Permanent magnet high performance servo motor

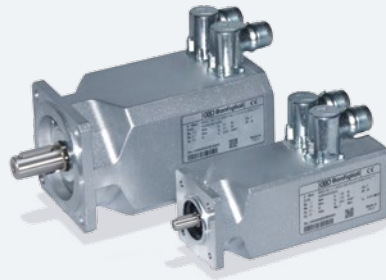
They are manufactured using the "salient pole" technology. The dimensions of the motor are drastically reduced, with considerable advantages in terms of torque density, overall dimensions and dynamic performance. Thanks to the high quality and performance of the Neodymium iron boron rare-earth magnets maximize performance in terms of very high accelerations and withstand high overloads without risk of demagnetization of the magnets.

Stall torque

0.85 - 45 Nm

Rated speed

1600, 3000, 4500, 5500, 6000 rpm



Power supply

230, 400 Vac

Inertia

0.02 ... 4.47 (Kgm² x 10⁻³)

Conformity

2006/95/EC (LVD) and 2004/108/EC (EMC)

BE series

High efficiency IE2 AC motors

New range of high efficiency AC motors IE2 class

The IEC-normalized BE motors comply with IEC 60034-30:2008 (efficiency classes) and all the applicable international standards, including the EMC and LV Directives.

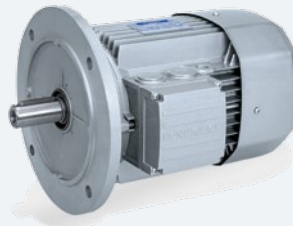
They are available in the 0.75 - 22 kW range in the foot and the flange mounting version, the latter in both the IM B5 and the IM B14 configuration. Single pole version available with generally, two brake options offered, one DC and one AC supply, lending further flexibility to the system. Finally, all motors are inverter duty.

Power Range (4 pole)

0.75 kW ... 22 kW

Frame Sizes

80B ... 180L



Pole Numbers

2, 4, 6

Mounting Options

Foot IM B3, Flange IM B5 and IM B14

Operation

50 Hz and 60 Hz

Compliance

IEC 60034-30:2008 (IE),
2006/95/EC (LVD) and 2004/108/EC (EMC)

BN series

AC motors

A complete range of AC motors developed for gearmotor duty that will exceed expectations.

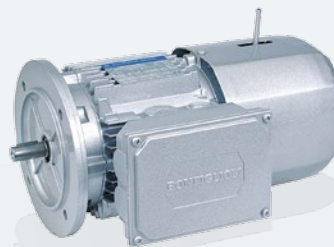
The IEC-normalized BN motors comply with all the applicable international standards, including the EMC and LV Directives. They are available in the 0.06 - 30 kW range in the foot and the flange mounting version, the latter in both the IM B5 and the IM B14 configuration. Single and dual pole versions available with generally, three brake options offered, one DC and two AC supply, lending further flexibility to the system. Finally, all motors are inverter duty.

kW rating (4 pole)

0.06 kW ... 30 kW

Frame Sizes

56A ... 200L



Pole Numbers

2, 4, 6, 8, 2/4, 2/6, 2/8, 2/12, 4/6, 4/8

Mounting Options

Foot IM B3, Flange IM B5 and IM B14

Operation

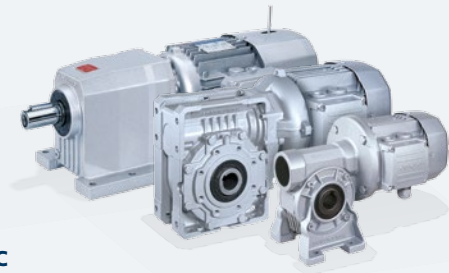
50 Hz and 60 Hz

Compliance

2006/95/EC (LVD) and 2004/108/EC (EMC)

Industrial gearboxes

A complete range of gearmotors, gearboxes and mechanical speed variators for light duty industrial automation applications.



A

Helical-bevel gearmotors

Torque Range	100 ... 14000 Nm
Mechanical Rating (n1= 1400 min-1)	0.22 ... 150 kW
Gear ratios	5.4 ... 1715

C

Helical gearmotors

Torque Range	45 ... 12000 Nm
Mechanical Rating (n1= 1400 min-1)	0.08 ... 213 kW
Gear ratios	2.6 ... 1481

F

Shaft mounted gearmotors

Torque Range	140 ... 14000 Nm
Mechanical Rating (n1= 1400 min-1)	0.17 ... 125 kW
Gear ratios	6.4 ... 2099

VF/W

Universal worm-gearmotors

Torque Range	13 ... 7100 Nm
Mechanical Rating (n1= 1400 min-1)	0.04 ... 75 kW
Gear ratios	7 ... 10000

Planetary gear motors

Compact, and yet extremely powerful, are the units of the 300 Planetary gear motor series. Their planetary drive train makes them the ideal choice for all the severe duty applications where shock loadings and impacts are more the rule than the exception. The product configuration is highly versatile, due to several options as far as the mounting, the gear layout, the output shaft and the motor interface. All the features are available for each of the 18 finely spaced frame sizes, spanning over the 1.000 - 1.400.000 Nm torque range. Finding the perfect match to any drive problem is therefore more than a wish, it is something users can safely rely on - always.



300

Torque Range	1000 ... 1287000 Nm
Mechanical Rating (n1 = 1500 min-1)	up to 450 kW
Gear ratios	3.4 ... 5234

Planetary precision gearboxes

A complete series of in-line and right angle, high precision, high dynamic, low backlash planetary precision gearboxes, including pulley models.



TQ Series

Nominal torque range:	30 ... 800 Nm
Acceleration torque:	45 ... 1200 Nm
Transmission ratios:	3 ... 100

LC Series

Nominal torque range:	12 ... 300 Nm
Acceleration torque:	20 ... 450 Nm
Transmission ratios:	3 ... 100

TQK Series

Nominal torque range:	30 ... 800 Nm
Acceleration torque:	45 ... 1200 Nm
Transmission ratios:	3 ... 100

LCK Series

Nominal torque range:	12 ... 300 Nm
Acceleration torque:	20 ... 450 Nm
Transmission ratios:	6 ... 100

Bonfiglioli's machine solutions

Textile spinning, winding and flyers

Bonfiglioli boasts many years of experience in the textile sector through its centre of excellence, Bonfiglioli Vectron.

Our strengths include:

- Customisation according to client specifications
- Precise and reliable control
- Sector-specific safety systems to avoid problems like yarn breakage, etc.
- Smooth winding speeds and precisely controlled yarn tension at all times
- Controlled shut-down functions
- Highly energy-efficient solutions

Packaging

Bonfiglioli's wide product offering offers perfect solutions for packaging applications. Active Cube Solution drive in combination with high dynamic BMD Servomotors with high resolution feedback systems and precision gearboxes in in line or right angled versions give users the perfect solution whatever the application needs.

Cost effective BMI Human machine solution in combination with various communication options can be used to create stand alone machine solutions as well as highly integrated drives in automation environments.



Crane

Crane applications require high resistant and reliable solutions for drives & motors. Also cost effectiveness is a key factor for crane applications.

Agile inverters in combination with asynchronous motors and several gearbox options supplied by a regenerative power supply unit AEC offer cost effective and energy efficient solutions. BMI here is the way for a simple and cost effective visualization and control solution.

Wood working tooling machinery

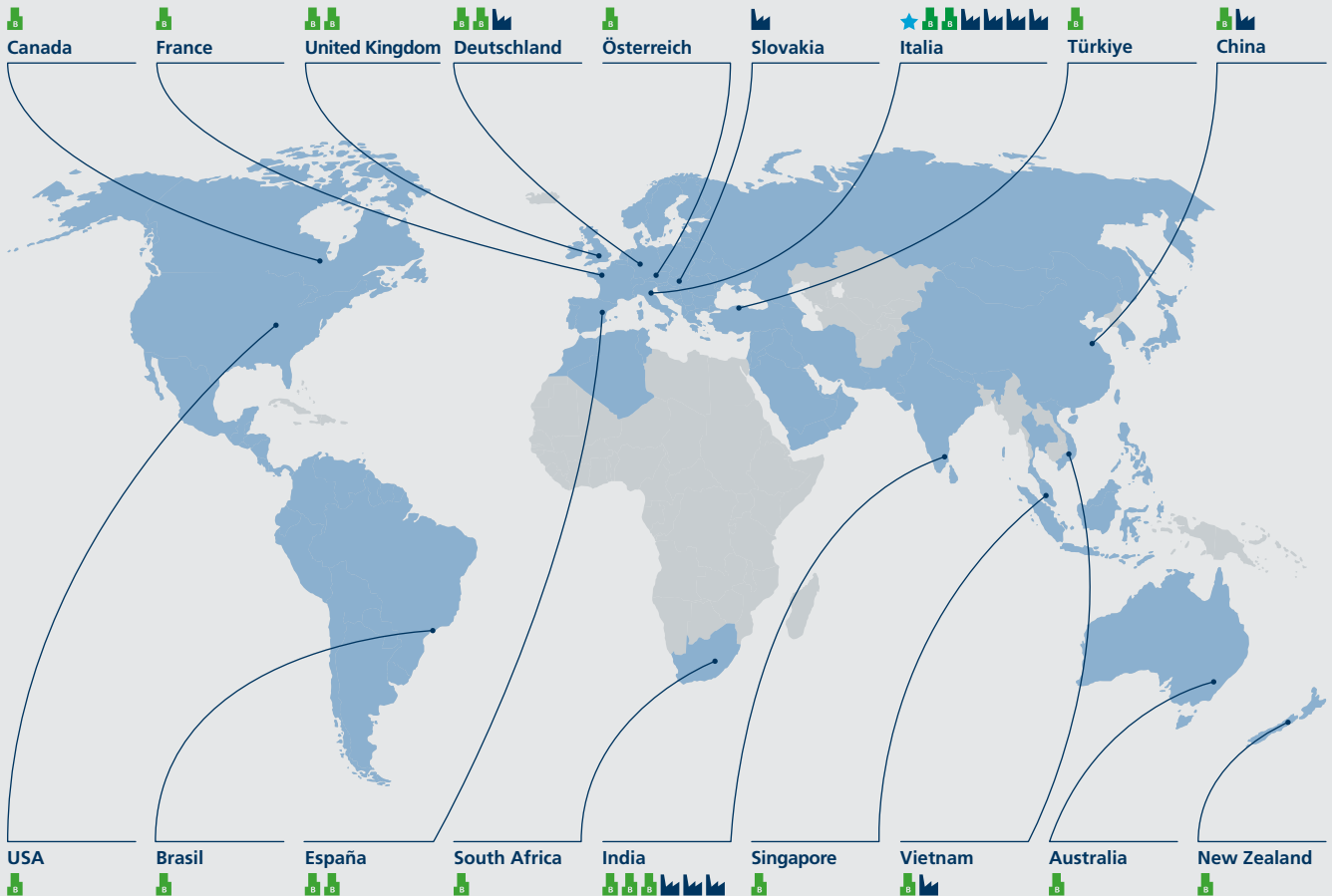
Bonfiglioli's experience in the field of woodworking machines is especially extensive in high-speed and spindle applications. Woodworking machine spindles (asynchronous and synchronous) require perfect control of supply currents as well as torque and rotation speed (with or without feedback control). Active Cube drive specialized for spindle applications offer wide speed and control performance range ideal for woodworking applications.

Benefits:

- Energy saving and efficiency
- Possibility of energy recovery during braking phases
- Reduced heat generation thanks to accurate speed and movement control
- Possibility of custom solutions



Bonfiglioli Worldwide



Headquarters

ITALY • Lippo di Calderara, Bologna



Branches

AUSTRALIA • Sidney
AUSTRIA • Wiener Neustadt
BRAZIL • São Paulo
CANADA • Toronto
CHINA • Shanghai
FRANCE • Paris
GERMANY • Neuss
GERMANY • Krefeld
INDIA • Chennai
INDIA • Mannur
INDIA • Bangalore
ITALY • Milano
ITALY • Rovereto
NEW ZEALAND • Auckland
SOUTH AFRICA • Johannesburg
SINGAPORE • Singapore
SPAIN • Barcelona
SPAIN • Madrid
TURKEY • Izmir
UNITED KINGDOM • Redditch
UNITED KINGDOM • Warrington
USA • Cincinnati
VIETNAM • Ho Chi Minh



Production facilities

ITALY • Calderara di Reno, Bologna
 Casting and gearcutting plant
 Assembly HDP, HDO, 300 series

ITALY • Vignola, Modena
 Gearmotor assembly plant
 Precision gearbox manufacturing and assembly plant

ITALY • Forli
 Planetary gearboxes manufacturing and assembly plant

ITALY • Rovereto, Trento
 Brushless motor production

GERMANY • Krefeld
 Inverter plant

SLOVAKIA • Považská Bystrica
 Large gearboxes manufacturing plant

INDIA • Chennai
 Planetary gearbox manufacturing and assembly plant

INDIA • Mannur
 Gearmotors manufacturing and assembly plant

INDIA • Bangalore
 Photovoltaic Inverter assembly

VIETNAM • Ho Chi Minh
 Electric motor plant

CHINA • Shanghai
 Photovoltaic Inverter assembly



Resellers

AFRICA • Algeria, Egypt, Kenya, Morocco, South Africa, Tunisia

ASIA • Bahrain, China, Emirates, Japan, Jordan, Hong Kong, India, Indonesia, Iran, Israel, Kuwait, Malaysia, Oman, Pakistan, Philippine, Qatar, Saudi Arabia, Singapore, South Korea, Syria, Thailand, Taiwan, Vietnam

EUROPE • Albania, Austria, Belgium, Bielorusia, Bulgaria, Cyprus, Croatia, Czech Republic, Denmark, Estonia, Finland, France, Holland, Hungary, Germany, Great Britain, Greece, Ireland, Italy, Lettonia, Lituania, Luxemburg, Malta, Montenegro, Norway, Poland, Portugal, Romania, Russia, Slovakian Republic, Serbia, Slovenia, Spain, Sweden, Switzerland, Turkey, Ucraina

LATIN AMERICA • Argentine, Bolivia, Brasil, Chile, Colombia, Costa Rica, Ecuador, Guatemala, Honduras, Mexico, Peru, Uruguay, Venezuela

NORTH AMERICA • Canada, United States

OCEANIA • Australia, New Zealand

Bonfiglioli worldwide network

Bonfiglioli Australia

2, Cox Place Glendenning NSW 2761
Locked Bag 1000 Plumpton NSW 2761
Tel. (+ 61) 2 8811 8000 - Fax (+ 61) 2 9675 6605
www.bonfiglioli.com.au

Bonfiglioli Brasil

Travessa Cláudio Armando 171
Bloco 3 - CEP 09861-730 - Bairro Assunção
São Bernardo do Campo - São Paulo
Tel. (+55) 11 4344 2323 - Fax (+55) 11 4344 2322
www.bonfigliolidobrasil.com.br

Bonfiglioli Canada

2-7941 Jane Street - Concord, Ontario L4K 4L6
Tel. (+1) 905 7384466 - Fax (+1) 905 7389833
www.bonfigliolicanada.com

Bonfiglioli China

Unit D, 8th Floor, Building D, BenQ Plaza, No.207
Songhong Road, Shanghai 200335
Tel. (+86) 21 60391118 - Fax (+86) 59702957
www.bonfiglioli.cn

Bonfiglioli Deutschland

Industrial, Mobile, Wind
Sperberweg 12 - 41468 Neuss
Tel. +49 (0) 2131 2988 0 - Fax +49 (0) 2131 2988 100
www.bonfiglioli.de

Industrial, Photovoltaic

Europark Fichtenhain B6 - 47807 Krefeld
Tel. +49 (0) 2151 8396 0 - Fax +49 (0) 2151 8396 999
www.vectron.net

Bonfiglioli España

Industrial, Mobile, Wind
Tecnotrans Bonfiglioli S.A.
Pol. Ind. Zona Franca sector C, calle F, n°6
08040 Barcelona
Tel. (+34) 93 4478400 - Fax (+34) 93 3360402
www.tecnotrans.com

Photovoltaic

Bonfiglioli Renewable Power Conversion Spain, SL
Ribera del Loira, 46 - Edificio 2 - 28042 Madrid
Tel. (+34) 91 5030125 - Fax (+34) 91 5030099
www.tecnotrans.com

Bonfiglioli France

14 Rue Eugène Pottier
Zone Industrielle de Moimont II - 95670 Marly la Ville
Tel. (+33) 1 34474510 - Fax (+33) 1 34688800
www.bonfiglioli.fr

Bonfiglioli India

Industrial
Bonfiglioli Transmission PVT Ltd.
Survey No. 528, Perambakkam High Road
Mannur Village - Sriperumbudur Taluk 602105
www.bonfiglioli.in

Mobile, Wind

Bonfiglioli Transmission PVT Ltd.
PLOT AC7-AC11 Sidco Industrial Estate
Thirumudivakkam - Chennai 600 044
Tel. +91(0) 44 24781035 - 24781036 - 24781037
Fax +91(0) 44 24780091 - 24781904
www.bonfiglioli.in

Photovoltaic

Bonfiglioli Renewable Power Conversion India (P) Ltd
No. 543, 14th Cross, 4th Phase,
Peenya Industrial Area, Bangalore - 560 058
Tel. +91 80 2836 1014/15 - Fax +91 80 2836 1016
www.bonfiglioli.in

Bonfiglioli Italia

Industrial, Photovoltaic

Via Sandro Pertini lotto 7b - 20080 Carpiano (Milano)
Tel. (+39) 02 985081 - Fax (+39) 02 985085817
www.bonfiglioli.it

Bonfiglioli Mechatronic Research

Via F. Zeni 8 - 38068 Rovereto (Trento)
Tel. (+39) 0464 443435/36 - Fax (+39) 0464 443439
www.bonfiglioli.it

Bonfiglioli New Zealand

88 Hastie Avenue, Mangere Bridge, Auckland
2022, New Zealand - PO Box 11795, Ellerslie
Tel. (+64) 09 634 6441 - Fax (+64) 09 634 6445
www.bonfiglioli.co.nz

Bonfiglioli Österreich

Molkereistr 4 - A-2700 Wiener Neustadt
Tel. (+43) 02622 22400 - Fax (+43) 02622 22386
www.bonfiglioli.at

Bonfiglioli South East Asia

24 Pioneer Crescent #02-08
West Park Bizcentral - Singapore, 628557
Tel. (+65) 6268 9869 - Fax. (+65) 6268 9179
www.bonfiglioli.com

Bonfiglioli South Africa

55 Galaxy Avenue,
Linbro Business Park - Sandton
Tel. (+27) 11 608 2030 OR - Fax (+27) 11 608 2631
www.bonfiglioli.co.za

Bonfiglioli Türkiye

Atatürk Organize Sanayi Bölgesi,
10044 Sk. No. 9, 35620 Çiğli - Izmir
Tel. +90 (0) 232 328 22 77 (pbx)
Fax +90 (0) 232 328 04 14
www.bonfiglioli.com.tr

Bonfiglioli United Kingdom

Industrial, Photovoltaic

Unit 7, Colemeadow Road
North Moons Moat - Redditch,
Worcestershire B98 9PB
Tel. (+44) 1527 65022 - Fax (+44) 1527 61995
www.bonfiglioli.co.uk

Mobile, Wind

3 - 7 Grosvenor Grange, Woolston
Warrington - Cheshire WA1 4SF
Tel. (+44) 1925 852667 - Fax (+44) 1925 852668
www.bonfiglioli.co.uk

Bonfiglioli USA

3541 Hargrave Drive Hebron, Kentucky 41048
Tel. (+1) 859 334 3333 - Fax (+1) 859 334 8888
www.bonfiglioliusa.com

Bonfiglioli Vietnam

Lot C-9D-CN My Phuoc Industrial Park 3
Ben Cat - Binh Duong Province
Tel. (+84) 650 3577411 - Fax (+84) 650 3577422
www.bonfiglioli.vn



Bonfiglioli has been designing and developing innovative and reliable power transmission and control solutions for industry, mobile machinery and renewable energy applications since 1956.

HEADQUARTERS

Bonfiglioli Riduttori S.p.A.
Via Giovanni XXIII, 7/A
40012 Lippo di Calderara di Reno
Bologna (Italy)

tel: +39 051 647 3111
fax: +39 051 647 3126
bonfiglioli@bonfiglioli.com
www.bonfiglioli.com



VE_CAT_BMI_STD_ENG_R00_0