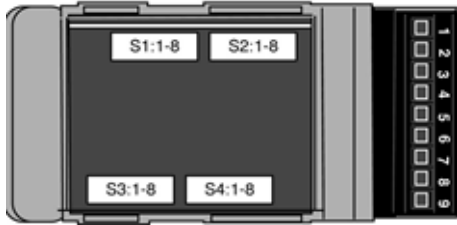


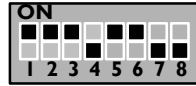
Switch Settings



SW1



SW2



SW3



SW4



Notes

This application details the DIP switches, connections and port setup details to allow a SLC-5XX PLC to be accessed remotely via a TD-35 modem.

The SLC-5XX DF-I Port speed has been set to maximum (19200 bps) to make the best use of the bandwidth available from the TD-35. Some newer processors can support 38400, refer to the TD-35 installation guide for the relevant switch settings.

Page 2 details the port parameters for SLC-5XX DF-I port.

Details on how to configure RSLinx can be found on a separate PDF available from the Westermo UK WEB site.

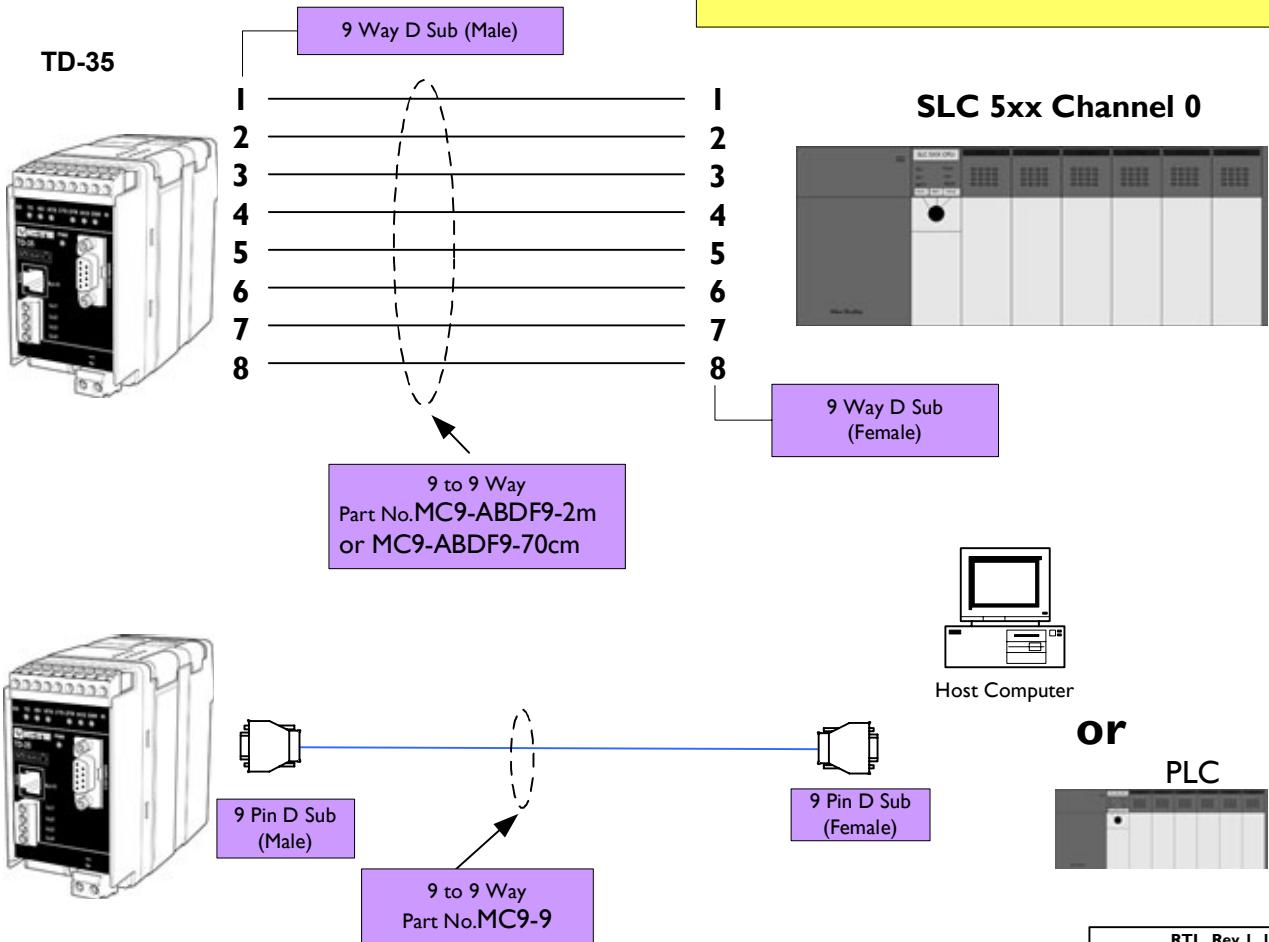
Compatibility

The TD-35 modem is compatible with all Westermo PSTN dial-up, ISDN and GSM modems.

*The data throughput via the GSM network is noticeable slower than a normal Dial-up connection.

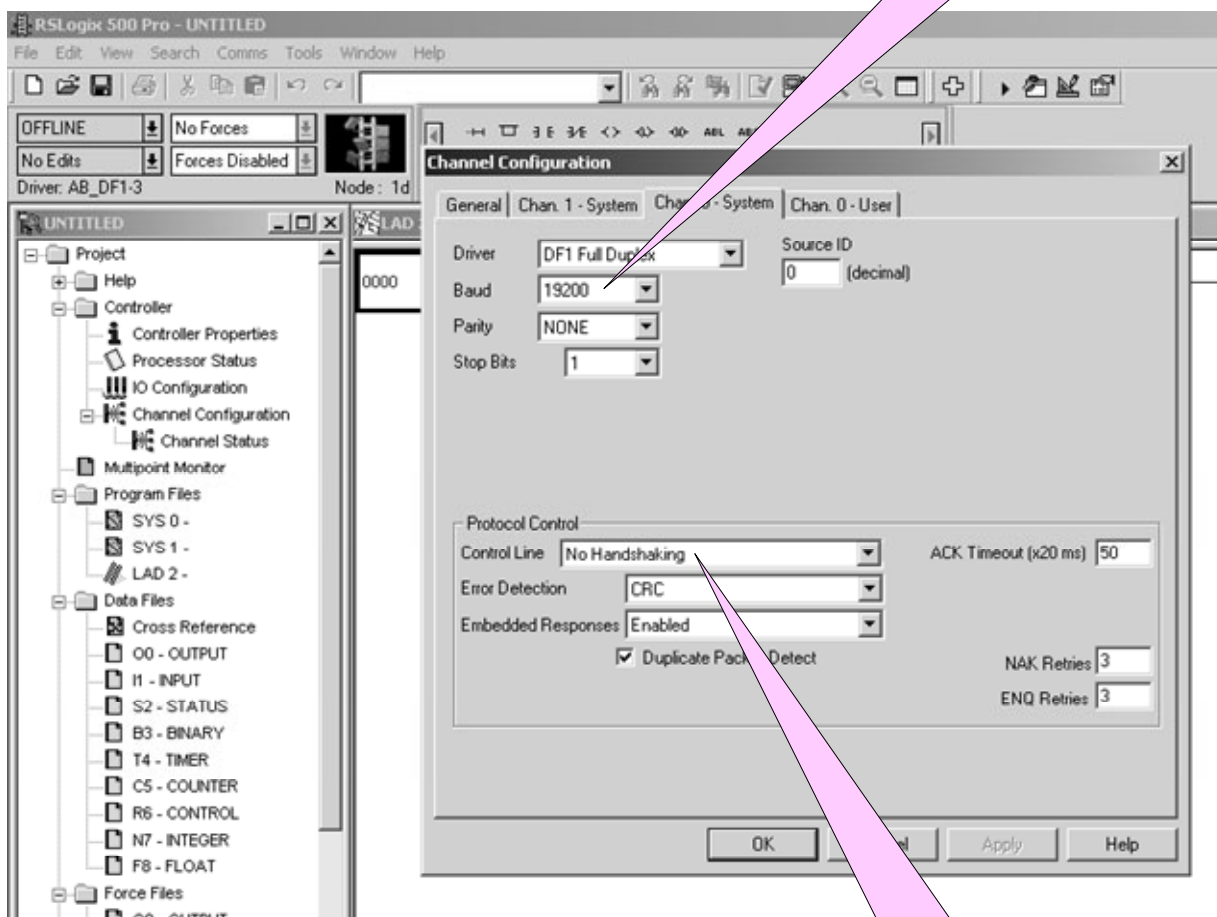
Connections

IMPORTANT
Set the SLC's PORT 0 to "full duplex"
not "full duplex modem"



SLC-5XX Channel 0 Configuration

Change Change Baud rate to 19200



Ensure that Control Line is set to "No Handshaking"