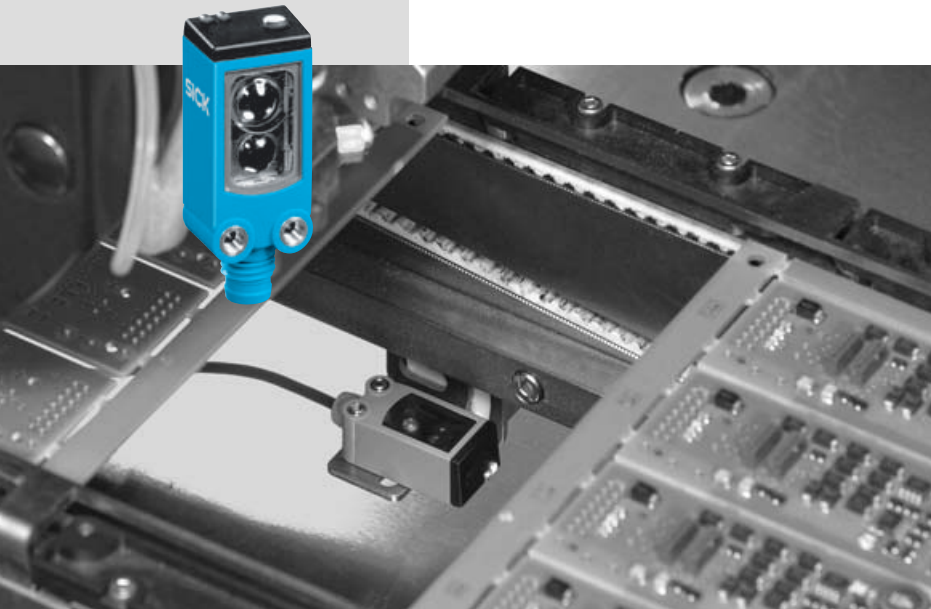
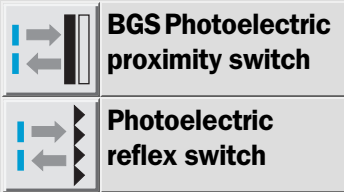


W 4-3 miniature photoelectric switch family: Efficient and space-saving



The outer dimensions of a sugar cube and, inside, the technology of a large photoelectric switch. The integration of photoelectric proximity switches no longer depends on space, even for demanding tasks.

Reliable detection of small, transparent or even reflective objects is standard, as is reliable detection largely irrespective of colour and surface finish.

The W 4-3 series sensors reliably detect objects with low reflectance even where a moving background is only a few millimetres away the result of a new chip-set specifically developed for this task, enabling precise active background suppression. In conjunction with the robust housing, the W 4-3 sensors remain largely unaffected by the

influence of environmental effects! Whether humidity or water spray, EMC contamination, flash-lights or heavy vibrations, the miniature sensors operate reliably in harsh industrial environments.

Unsurpassed ease of use with the new process of electronic active background suppression. Fast commissioning at the touch of a button or, if the sensor is inaccessible, via control cable. Secure setting via potentiometer.

So, the sensor is built for the future. The specially developed chip-set is field bus enabled. Remote maintenance, parametrisation and diagnostics can be implemented.

The W 4-3 series photoelectric reflex switch offers important customer benefits:

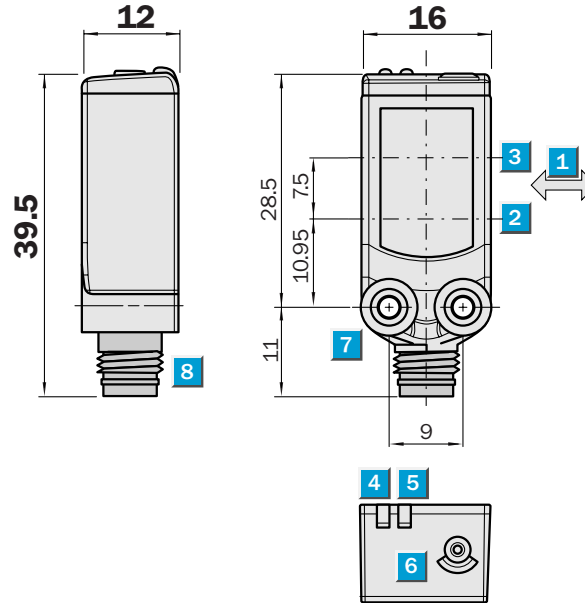
- Secure and fast alignment through an easily visible, intensive red homogeneous light spot.
- Minimum assembly through optimum housing shape, requiring no mounting bracket for most installations.

Scanning distance
4 ... 150 mm

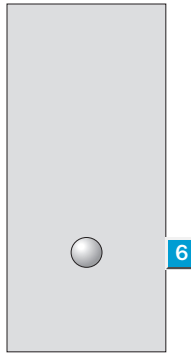
Photoelectric proximity switch

- Commissioning by simple Teach-in function
- Object detection almost irrespective of colour and background consistency
- Secure function when mounted opposite other sensors

Dimensional drawing



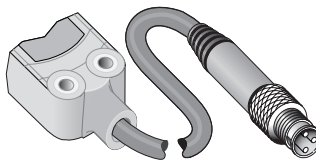
Adjustments possible



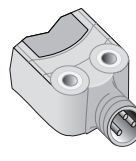
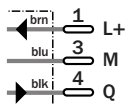
- 1 Standard direction of the material being scanned
- 2 Optical axis, sender
- 3 Optical axis, receiver
- 4 LED indicator yellow, status of received light beam
- 5 LED indicator green, power on
- 6 Teach button
- 7 Mounting hole M3
- 8 Connector

Connection type

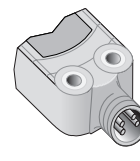
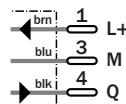
WTB4-3N3162	WTB4-3N2162	WTB4-3P2262	WTB4-3N1362
WTB4-3P3162	WTB4-3P2162		WTB4-3P1362



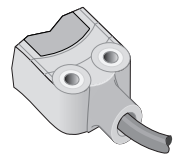
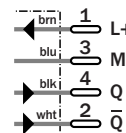
M8, 3-pin



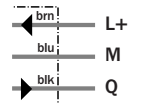
M8, 3-pin



M8, 4-pin



3 x 0.14 mm²



Accessories

Connector, M8, 3-pin
Connector, M8, 4-pin
Mounting systems

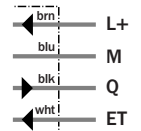
WTB4-3P2264

M8, 4-pin



WTB4-3N1164

4 x 0.14 mm²



WTB4-3		N1164	N1362	N2162	N3162	P1362	P2162	P2262	P2264	P3162
Scanning distance typ. max.	4 ... 150 mm									
Operating distance	15 ... 150 mm									
Adjustment of operating distance	Teach-in: single teach button & cable ¹⁾									
	Teach-in: Single Teach button									
Light source, light type	Pin Point LED, Red light, 650 nm ²⁾									
Light spot diameter	7 mm at 50 mm distance									
Supply voltage V_s	DC 10 ... 30 V ³⁾									
Ripple	< 5 V _{ss} ⁴⁾									
Power consumption	≤30 mA ⁵⁾									
Switching outputs	NPN, Q									
	PNP, Q									
	PNP antivalent									
Switching mode	Light-switching									
	Complementary									
Output current I _a max	≤100 mA									
Response time	< 0.5 ms ⁶⁾									
Switching frequency	1,000 Hz ⁷⁾									
Connection type	Cable, PVC, 2 m ⁸⁾									
	Connector, M8, 3-pin									
	Cable with plug, M8, 3-pin, PVC, 100 mm ⁸⁾									
	Connector, M8, 4-pin									
VDE protection class	⊖									
Circuit protection	V _s connections reverse-polarity protected / Output Q and Q not short-circuit protected / Interference suppression									
Enclosure rating	IP 66, IP 67									
Ambient temperature operation	-40 °C ... +60 °C									
Ambient temperature storage	-40 °C ... +75 °C									
Weight	Ca. 20 g									
Housing material	Bayblend, PMMA									

¹⁾ Extern teach-in: impuls > 2s with voltage V_s for PNP or M for NPN

²⁾ Average service life 100,000 h

at T_a = +25 °C

³⁾ Limit values

⁴⁾ May not exceed or fall short of

V_s tolerances

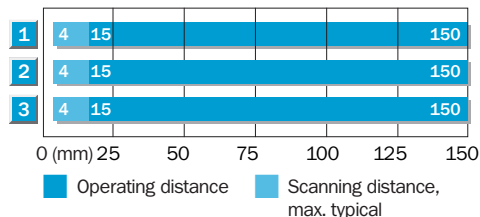
⁵⁾ Without load

⁶⁾ Signal transit time with resistive load

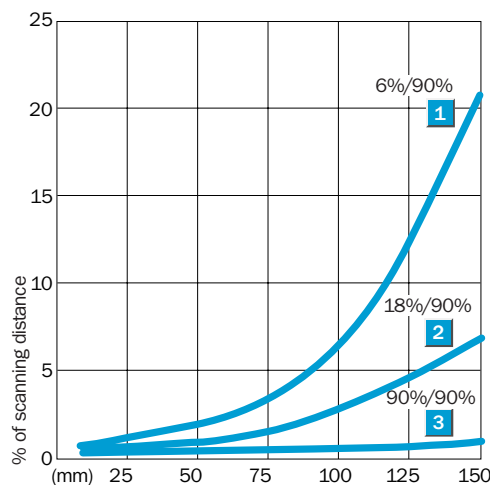
⁷⁾ With light/dark ratio 1:1

⁸⁾ Do not bend below 0 °C

Scanning distance



- 1 Scanning range on black, 6 % remission
- 2 Scanning range on grey, 18 % remission
- 3 Scanning range on white, 90 % remission



Ordering information

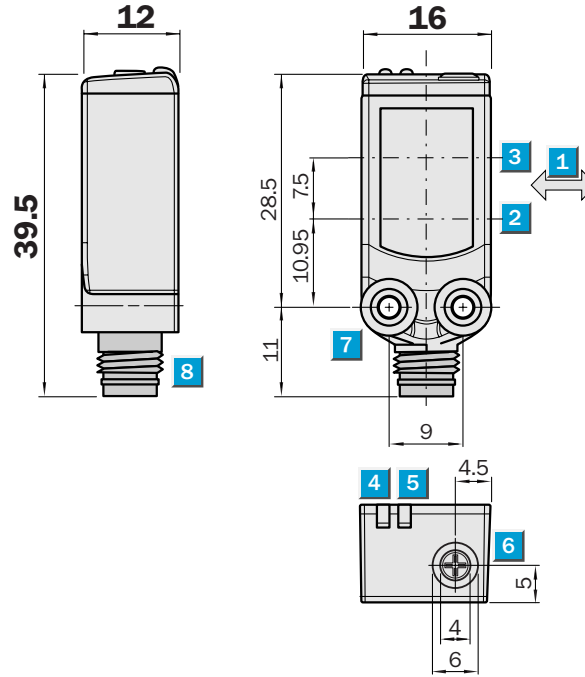
Type	Order No.
WTB4-3N1164	1 028 090
WTB4-3N1362	1 028 087
WTB4-3N2162	1 028 088
WTB4-3N3162	1 028 089
WTB4-3P1362	1 028 081
WTB4-3P2162	1 028 084
WTB4-3P2262	1 028 085
WTB4-3P2264	1 028 086
WTB4-3P3162	1 028 082

Scanning distance
4 ... 150 mm

Photoelectric proximity switch

- High-precision setting of scanning distance thanks to 5-turn potentiometer
- Object detection almost irrespective of colour and background consistency
- Secure function when mounted opposite other sensors

Dimensional drawing



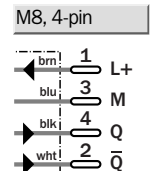
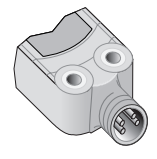
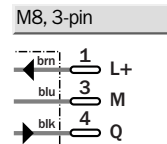
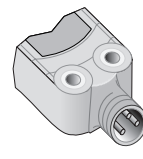
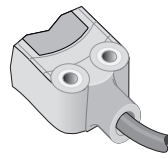
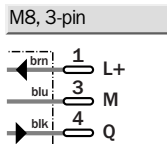
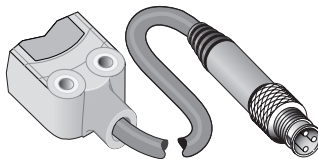
Adjustments possible



- 1 Standard direction of the material being scanned
- 2 Optical axis, sender
- 3 Optical axis, receiver
- 4 LED indicator yellow, status of received light beam
- 5 LED indicator green, power on
- 6 Potentiometer
- 7 Mounting hole M3
- 8 Connector

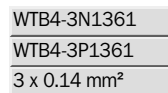
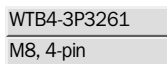
Connection type

WTB4-3N3161	WTB4-3N1161 WTB4-3P1161	WTB4-3N2161 WTB4-3P2161	WTB4-3P2261
-------------	----------------------------	----------------------------	-------------



Accessories

Connector, M8, 3-pin
Connector, M8, 4-pin
Mounting systems



WTB4-3		N1161	N1361	N2161	N3161	P1161	P1361	P2161	P2261	P3261
Scanning distance typ. max.	4 ... 150 mm									
Operating distance	15 ... 150 mm									
Adjustment of operating distance	Potentiometer, 5 revolutions									
Light source, light type	Pin Point LED, Red light, 650 nm ¹⁾									
Light spot diameter	7 mm at 50 mm distance									
Supply voltage V_s	DC 10 ... 30 V ²⁾									
Ripple	< 5 V _{SS} ³⁾									
Power consumption	≤30 mA ⁴⁾									
Switching outputs	NPN antivalent									
	NPN, Q									
	PNP antivalent									
	PNP, Q									
Switching mode	Complementary									
	Light-switching									
Output current I _a max	≤100 mA									
Response time	< 0.5 ms ⁵⁾									
Switching frequency	1,000 Hz ⁶⁾									
Connection type	Cable, PVC, 2 m ⁷⁾									
	Connector, M8, 3-pin									
	Cable with plug, M8, 3-pin, PVC, 100 mm ⁷⁾									
	Connector, M8, 4-pin									
	Cable with plug, M8, 4-pin, PVC, 100 mm ⁷⁾									
VDE protection class	⊕									
Circuit protection	V _s connections reverse-polarity protected / Output Q and Q not short-circuit protected / Interference suppression									
Enclosure rating	IP 66, IP 67									
Ambient temperature operation	-40 °C ... +60 °C									
Ambient temperature storage	-40 °C ... +75 °C									
Weight	Ca. 20 g									
Housing material	Bayblend, PMMA									

¹⁾ Average service life 100,000 h at T_a = +25 °C

²⁾ Limit values

³⁾ May not exceed or fall short of

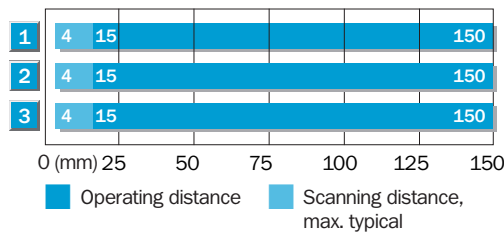
V_s tolerances
⁴⁾ Without load

⁵⁾ Signal transit time with resistive load

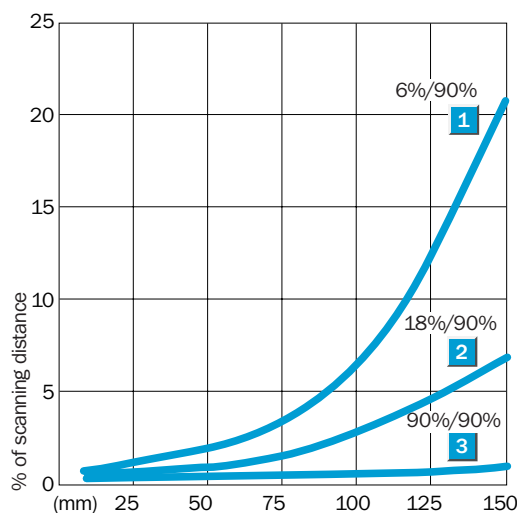
⁶⁾ With light/dark ratio 1:1

⁷⁾ Do not bend below 0 °C

Scanning distance



- 1 Scanning range on black, 6 % remission
- 2 Scanning range on grey, 18 % remission
- 3 Scanning range on white, 90 % remission



Ordering information

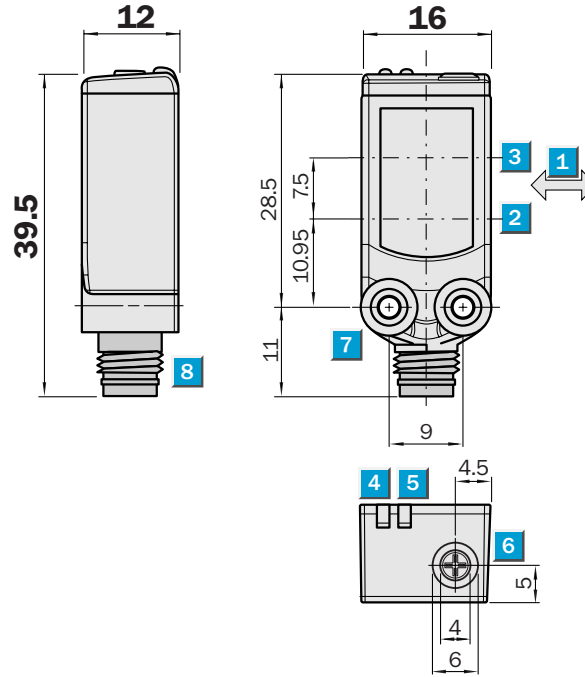
Type	Order No.
WTB4-3N1161	1 028 102
WTB4-3N1361	1 028 101
WTB4-3N2161	1 028 104
WTB4-3N3161	1 028 103
WTB4-3P1161	1 028 096
WTB4-3P1361	1 028 094
WTB4-3P2161	1 028 099
WTB4-3P2261	1 028 100
WTB4-3P3261	1 028 098

Scanning distance
4 ... 150 mm

Photoelectric proximity switch

- High-precision setting of scanning distance thanks to 5-turn potentiometer
- Object detection almost irrespective of colour and background consistency
- Secure function when mounted opposite other sensors

Dimensional drawing



Adjustments possible

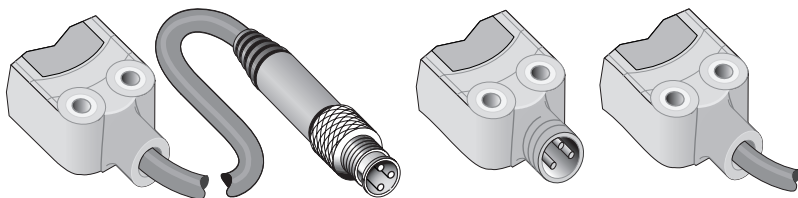


- 1 Standard direction of the material being scanned
- 2 Optical axis, sender
- 3 Optical axis, receiver
- 4 LED indicator yellow, status of received light beam
- 5 LED indicator green, power on
- 6 Potentiometer
- 7 Mounting hole M3
- 8 Connector



Connection type

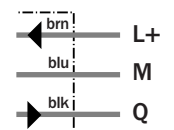
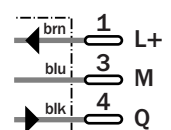
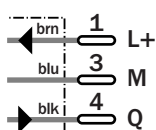
WTB4-3E3161	WTB4-3E2161	WTB4-3N1361
WTB4-3F3161	WTB4-3F2161	WTB4-3F1361



M8, 3-pin

M8, 3-pin

3 x 0.14 mm²



Accessories

Connector, M8, 3-pin
Mounting systems



WTB4-3		N1361	E2161	E3161	F1361	F2161	F3161				
Scanning distance typ. max.	4 ... 150 mm										
Operating distance	15 ... 150 mm										
Adjustment of operating distance	Potentiometer, 5 revolutions										
Light source, light type	Pin Point LED, Red light, 650 nm ¹⁾										
Light spot diameter	7 mm at 50 mm distance										
Supply voltage V_s	DC 10 ... 30 V ²⁾										
Ripple	< 5 V _{SS} ³⁾										
Power consumption	≤30 mA ⁴⁾										
Switching outputs	NPN, Q										
	PNP, Q										
Switching mode	Dark-switching										
Output current I _a max	≤100 mA										
Response time	< 0.5 ms ⁵⁾										
Switching frequency	1,000 Hz ⁶⁾										
Connection type	Cable, PVC, 2 m ⁷⁾										
	Connector, M8, 3-pin										
	Cable with plug, M8, 3-pin, PVC, 100 mm ⁷⁾										
VDE protection class	◆										
Circuit protection	V _s connections reverse-polarity protected / Output Q and Q not short-circuit protected / Interference suppression										
Enclosure rating	IP 66, IP 67										
Ambient temperature operation	-40 °C ... +60 °C										
Ambient temperature storage	-40 °C ... +75 °C										
Weight	Ca. 20 g										
Housing material	Bayblend, PMMA										

¹⁾ Average service life 100,000 h at T_a = +25 °C

²⁾ Limit values

³⁾ May not exceed or fall short of

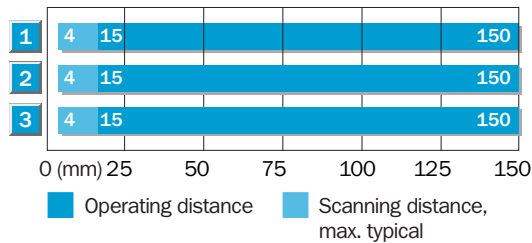
V_s tolerances
⁴⁾ Without load

⁵⁾ Signal transit time with resistive load

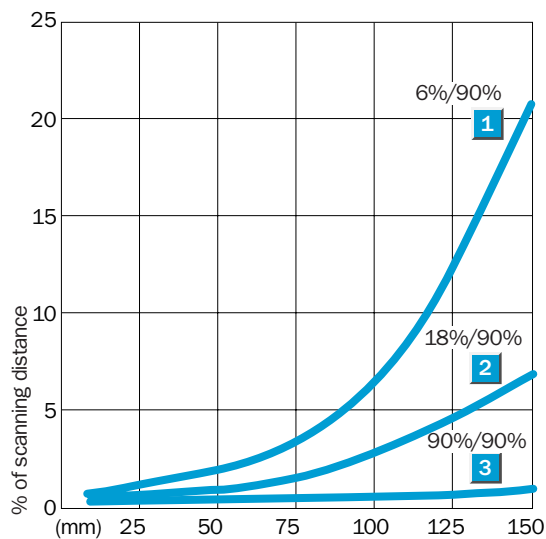
⁶⁾ With light/dark ratio 1:1

⁷⁾ Do not bend below 0 °C

Scanning distance



- 1 Scanning range on black, 6 % remission
- 2 Scanning range on grey, 18 % remission
- 3 Scanning range on white, 90 % remission



Ordering information

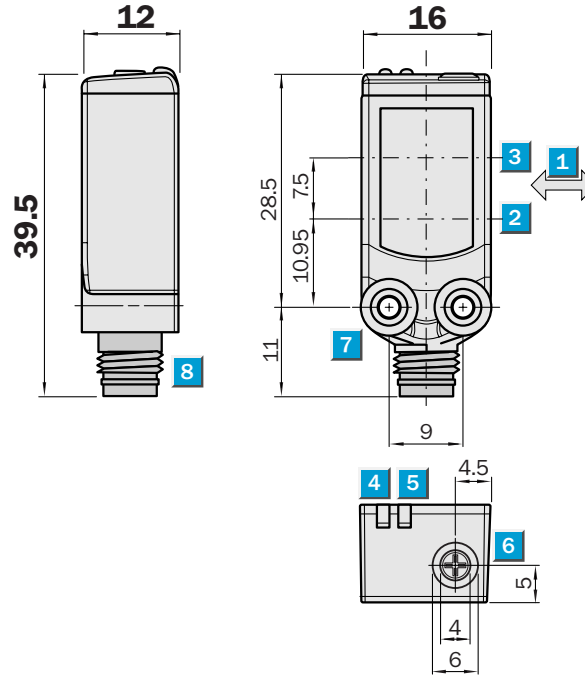
Type	Order No.
WTB4-3N1361	1 028 108
WTB4-3E2161	1 028 110
WTB4-3E3161	1 028 109
WTB4-3F1361	1 028 105
WTB4-3F2161	1 028 107
WTB4-3F3161	1 028 106

Scanning distance
4 ... 50 mm

Photoelectric proximity switch

- Reliable detection highly transparent and shiny objects at a distance of 20 ... 25 mm
- High-precision setting of scanning distance thanks to 5-turn potentiometer
- Large, homogeneous and well defined light spot

Dimensional drawing



Adjustments possible

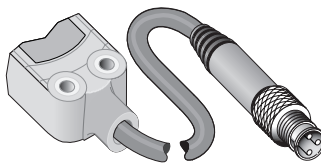


- Standard direction of the material being scanned
- Optical axis, sender
- Optical axis, receiver
- LED indicator yellow, status of received light beam
- LED indicator green, power on
- Potentiometer
- Mounting hole M3
- Connector

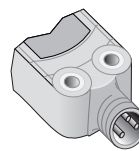


Connection type

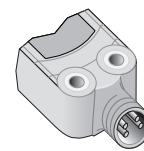
WTV4-3P3181	WTV4-3N2181 WTV4-3P2181	WTV4-3P2281	WTV4-3N1381 WTV4-3P1381
-------------	----------------------------	-------------	----------------------------



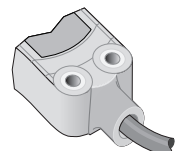
M8, 3-pin



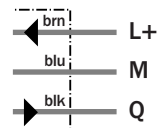
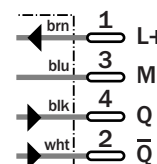
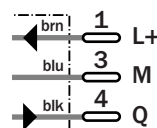
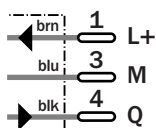
M8, 3-pin



M8, 4-pin



3 x 0.14 mm²



Accessories

- Connector, M8, 3-pin
- Connector, M8, 4-pin
- Mounting systems



WTV4-3		N1381	N2181	P1381	P2181	P2281	P3181				
Scanning distance typ. max.	4 ... 50 mm										
Operating distance	15 ... 50 mm										
Adjustment of operating distance	Potentiometer, 5 revolutions										
Light source, light type	Pin Point LED, Red light, 650 nm ¹⁾										
Light spot diameter	7 mm at 50 mm distance										
Supply voltage V_s	DC 10 ... 30 V ²⁾										
Ripple	< 5 V _{ss} ³⁾										
Power consumption	≤30 mA ⁴⁾										
Switching outputs	NPN, Q										
	PNP, Q										
	PNP antivalent										
Switching mode	Light-switching										
	Complementary										
Output current I _a max	≤100 mA										
Response time	< 0.5 ms ⁵⁾										
Switching frequency	1,000 Hz ⁶⁾										
Connection type	Cable, PVC, 2 m ⁷⁾										
	Connector, M8, 3-pin										
	Connector, M8, 4-pin										
	Cable with plug, M8, 3-pin, PVC, 100 mm ⁷⁾										
VDE protection class	⊕										
Circuit protection	V _s connections reverse-polarity protected / Output Q and Q not short-circuit protected / Interference suppression										
Enclosure rating	IP 66, IP 67										
Ambient temperature operation	-40 °C ... +60 °C										
Ambient temperature storage	-40 °C ... +75 °C										
Weight	Ca. 20 g										
Housing material	Bayblend, PMMA										

¹⁾ Average service life 100,000 h at T_a = +25 °C
²⁾ Limit values
³⁾ May not exceed or fall short of
⁴⁾ Without load
⁵⁾ Signal transit time with resistive load
⁶⁾ With light/dark ratio 1:1
⁷⁾ Do not bend below 0 °C

Ordering information

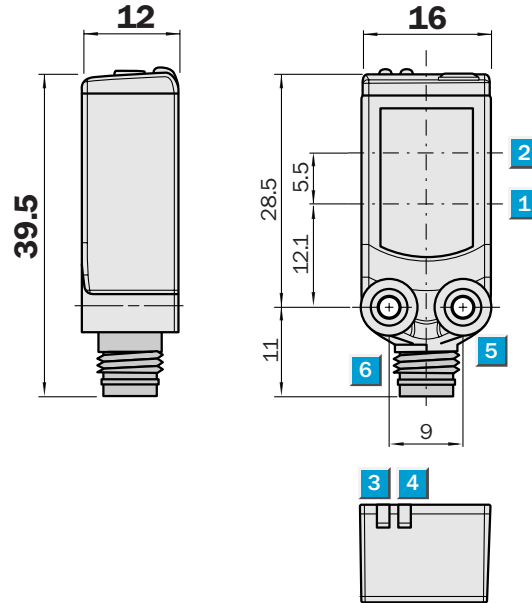
Type	Order No.
WTV4-3N1381	1 028 115
WTV4-3N2181	1 028 116
WTV4-3P1381	1 028 111
WTV4-3P2181	1 028 113
WTV4-3P2281	1 028 114
WTV4-3P3181	102 112

Scanning range
0.01 ... 4.5 m

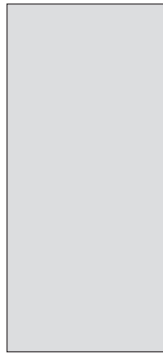
Photoelectric reflex switch

- Fast and secure setting by bright light spot
- Better protection from unwanted manipulation (non-adjustable)
- Easily mounted in slots and guide rails

Dimensional drawing



Adjustments possible

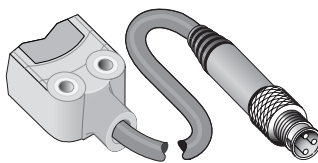


- 1 Centre of optical axis, sender
- 2 Centre of optical axis, receiver
- 3 LED signal strength indicator orange: status of received light beam
- 4 LED signal strength indicator green: power on
- 5 Mounting hole M3
- 6 Connector

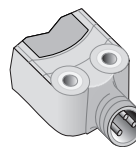
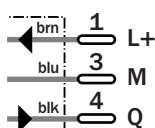


Connection type

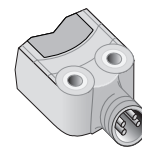
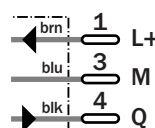
WL4-3N3130	WL4-3N2130 WL4-3P2130 WL4-3P3130	WL4-3P2230	WL4-3N1330 WL4-3P1330
------------	--	------------	--------------------------



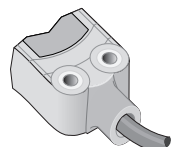
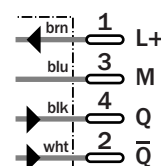
M8, 3-pin



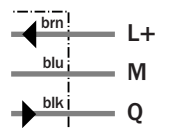
M8, 3-pin



M8, 4-pin



3 x 0.14 mm²



Accessories

Connector, M8, 3-pin
Connector, M8, 4-pin
Mounting systems

	WL4-3	N1330	N2130	N3130	P1330	P2130	P2230	P3130			
Scanning range typ. max.	0.01 ... 4.5 m										
Scanning range, recommended	0.02 ... 3.8 m										
Relating to	Reflector PL 80 A										
Light source, light type	Pin Point LED, Red light, 650 nm ¹⁾										
Polarisation filter	✓										
Supply voltage V_s	DC 10 ... 30 V ²⁾										
Ripple	≤5 V _{SS} ³⁾										
Power consumption	≤20 mA ⁴⁾										
Switching outputs	NPN, Q										
	PNP, Q										
	PNP antivalent										
Switching mode	Light-switching										
Output current I _a max	≤100 mA										
Response time	< 0.5 ms ⁵⁾										
Switching frequency	1,000 Hz ⁶⁾										
Connection type	Cable, PVC, 2 m ⁷⁾										
	Connector, M8, 3-pin										
	Cable with plug, M8, 3-pin, 100 mm ⁷⁾										
	Connector, M8, 4-pin										
Circuit protection	V _s connections reverse-polarity protected / Output Q and Q not short-circuit protected / Interference suppression										
Enclosure rating	IP 66, IP 67										
Ambient temperature operation	-40 °C ... +60 °C										
Ambient temperature storage	-40 °C ... +75 °C										
Weight	Ca. 30 g										
Housing material	Bayblend, PMMA										

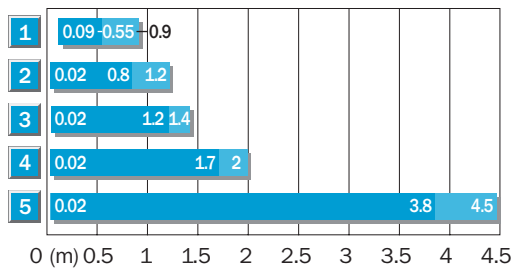
¹⁾ Average service life 100,000 h at T_a = +25 °C

²⁾ Limit values
³⁾ May not exceed or fall short of

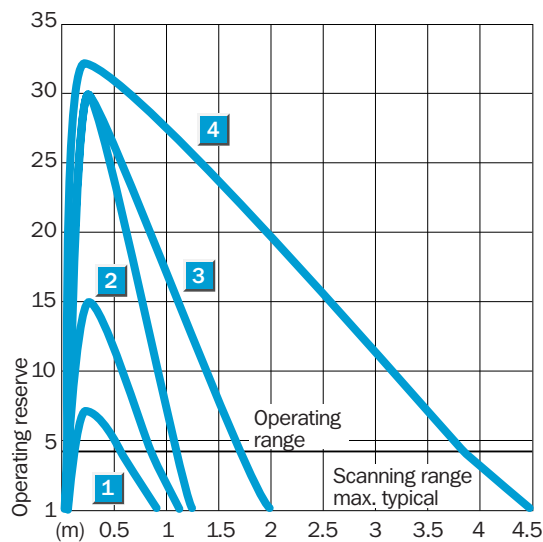
V_s tolerances
⁴⁾ Without load

⁵⁾ Signal transit time with resistive load
⁶⁾ With light/dark ratio 1:1
⁷⁾ Do not bend below 0 °C

Scanning range



Reflector type	Operating range
1 REF-IRF-56	0.09 ... 0.55 m
2 PL10F	0.02 ... 0.8 m
3 PL20A	0.02 ... 1.2 m
4 PL40A	0.02 ... 1.7 m
5 PL80A	0.02 ... 3.8 m



Ordering information

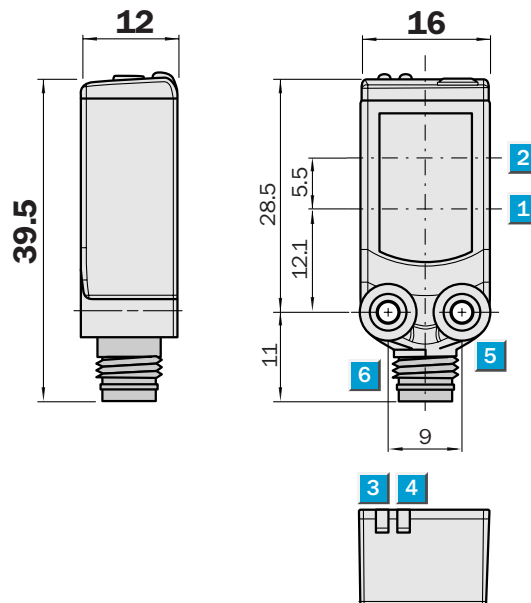
Type	Order No.
WL4-3N1330	1 028 148
WL4-3N2130	1 028 151
WL4-3N3130	1 028 150
WL4-3P1330	1 028 143
WL4-3P2130	1 028 146
WL4-3P2230	1 028 147
WL4-3P3130	1 028 144

Scanning range
0.01 ... 4.5 m

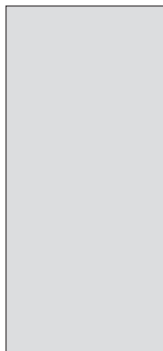
Photoelectric reflex switch

- Fast and secure setting by bright light spot
- Better protection from unwanted manipulation (non-adjustable)
- Easily mounted in slots and guide rails

Dimensional drawing



Adjustments possible

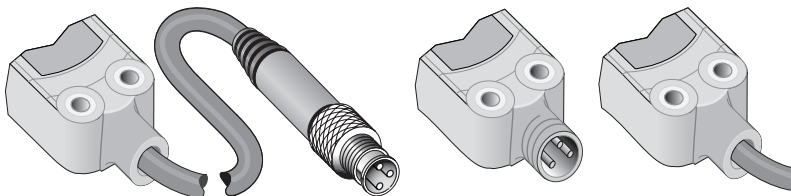


- 1 Centre of optical axis, sender
- 2 Centre of optical axis, receiver
- 3 LED signal strength indicator orange: status of received light beam
- 4 LED signal strength indicator green: power on
- 5 Mounting hole M3
- 6 Connector



Connection type

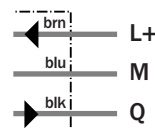
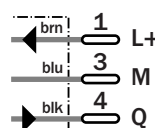
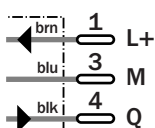
WL4-3E3130	WL4-3E2130	WL4-3E1330
	WL4-3F2130	WL4-3F1330
	WL4-3F3130	



M8, 3-pin

M8, 3-pin

3 x 0.14 mm²



- Accessories**
- Connector, M8, 3-pin
 - Mounting systems

	WL4-3	E1330	E2130	E3130	F1330	F2130	F3130				
Scanning range typ. max.	0.01 ... 4.5 m										
Scanning range, recommended	0.02 ... 3.8 m										
Relating to	Reflector PL 80 A										
Light source, light type	Pin Point LED, Red light, 650 nm ¹⁾										
Polarisation filter	✓										
Supply voltage V_s	DC 10 ... 30 V ²⁾										
Ripple	≤5 V _{SS} ³⁾										
Power consumption	≤20 mA ⁴⁾										
Switching outputs	NPN, Q										
	PNP, Q										
Switching mode	Dark-switching										
Output current I _a max	≤100 mA										
Response time	< 0.5 ms ⁵⁾										
Switching frequency	1,000 Hz ⁶⁾										
Connection type	Cable, PVC, 2 m ⁷⁾										
	Connector, M8, 3-pin										
	Cable with plug, M8, 3-pin, 100 mm ⁷⁾										
Circuit protection	V _s connections reverse-polarity protected / Output Q and Q not short-circuit protected / Interference suppression										
Enclosure rating	IP 66, IP 67										
Ambient temperature operation	-40 °C ... +60 °C										
Ambient temperature storage	-40 °C ... +75 °C										
Weight	Ca. 30 g										
Housing material	Bayblend, PMMA										

¹⁾ Average service life 100,000 h at T_a = +25 °C

²⁾ Limit values

³⁾ May not exceed or fall short of

V_s tolerances

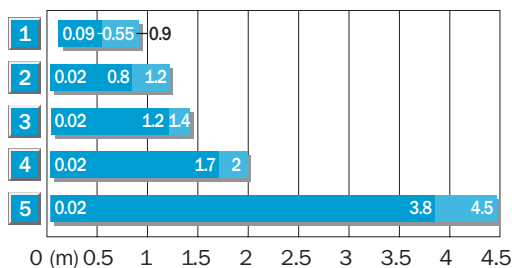
⁴⁾ Without load

⁵⁾ Signal transit time with resistive load

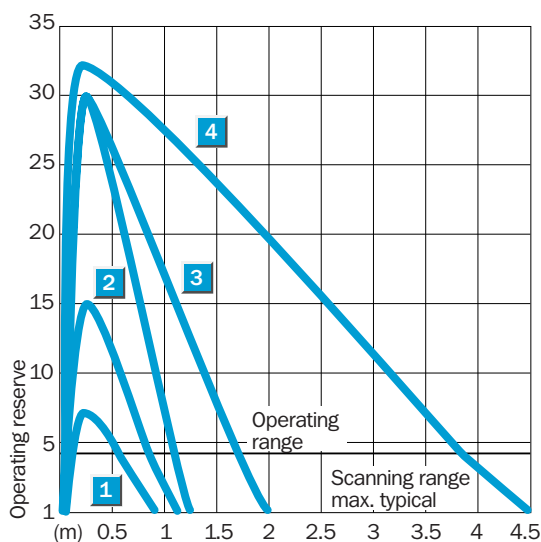
⁶⁾ With light/dark ratio 1:1

⁷⁾ Do not bend below 0 °C

Scanning range



Reflector type	Operating range
1 REF-IRF-56	0.09 ... 0.55 m
2 PL10F	0.02 ... 0.8 m
3 PL20A	0.02 ... 1.2 m
4 PL40A	0.02 ... 1.7 m
5 PL80A	0.02 ... 3.8 m



Ordering information

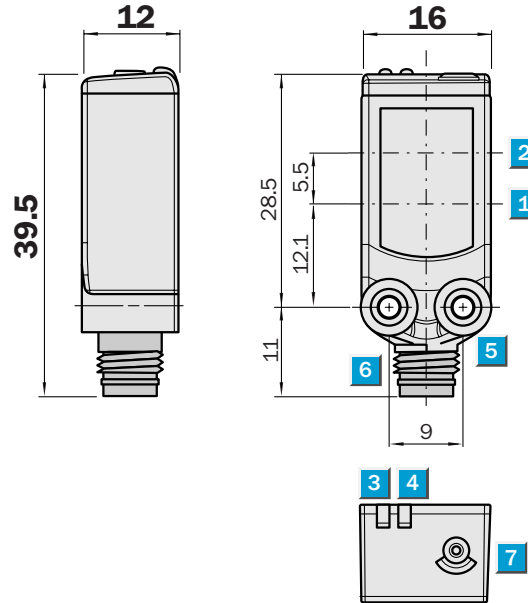
Type	Order No.
WL4-3E1330	1 028 156
WL4-3E2130	1 028 158
WL4-3E3130	1 028 157
WL4-3F1330	1 028 152
WL4-3F2130	1 028 155
WL4-3F3130	1 028 153

Scanning range
0.01 ... 4.5 m

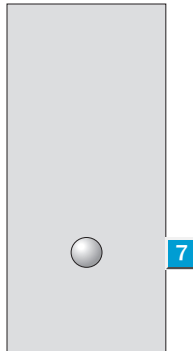
Photoelectric reflex switch

- Fast and secure setting by bright light spot
- Detection of glass with an attenuation of > 8%
- Secure Teach-in, also via cable

Dimensional drawing



Adjustments possible

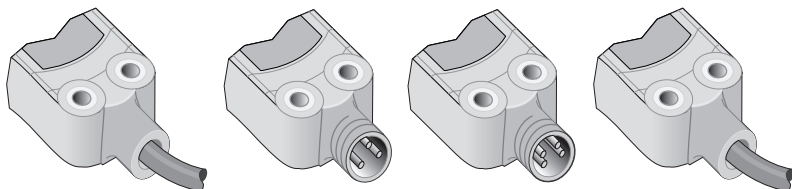


- 1 Centre of optical axis, sender
- 2 Centre of optical axis, receiver
- 3 LED signal strength indicator orange: status of received light beam
- 4 LED signal strength indicator green: power on
- 5 Mounting hole M3
- 6 Connector
- 7 Teach button

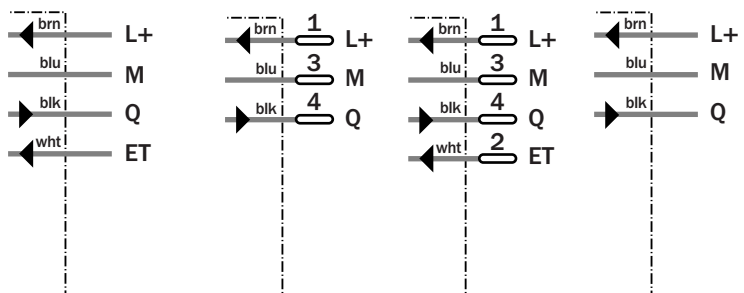


Connection type

WLG4-3E1134	WLG4-3E2132 WLG4-3F3132	WLG4-3F2234	WLG4-3E1332
-------------	----------------------------	-------------	-------------



3 x 0.14 mm ²	M8, 3-pin	M8, 4-pin	3 x 0.14 mm ²
--------------------------	-----------	-----------	--------------------------



Accessories

Connector, M8, 3-pin
Connector, M8, 4-pin
Mounting systems

	WLG4-3	E1134	E1332	E2132	F2234	F3132				
Scanning range typ. max.	0.01 ... 4.5 m									
Scanning range, recommended	0.02 ... 3.8 m									
Relating to	Reflector PL 80 A									
Sensitivity adjustment	Teach-in: single teach button & cable Teach-in: Single Teach button									
Light source, light type	Pin Point LED, Red light, 650 nm ¹⁾									
Polarisation filter	✓									
Supply voltage V_s	DC 10 ... 30 V ²⁾									
Ripple	≤5 V _{SS} ³⁾									
Power consumption	≤20 mA ⁴⁾									
Switching outputs	NPN, Q PNP, Q									
Switching mode	Dark-switching									
Output current I _a max	≤100 mA									
Response time	< 0.5 ms ⁵⁾									
Switching frequency	1,000 Hz ⁶⁾									
Connection type	Cable, PVC, 2 m ⁷⁾ Connector, M8, 3-pin Connector, M8, 4-pin Cable with plug, M8, 3-pin, 100 mm ⁷⁾									
Circuit protection	V _s connections reverse-polarity protected / Output Q and Q not short-circuit protected / Interference suppression									
Enclosure rating	IP 66, IP 67									
Ambient temperature operation	-40 °C ... +60 °C									
Ambient temperature storage	-40 °C ... +75 °C									
Weight	Ca. 30 g									
Housing material	Bayblend, PMMA									

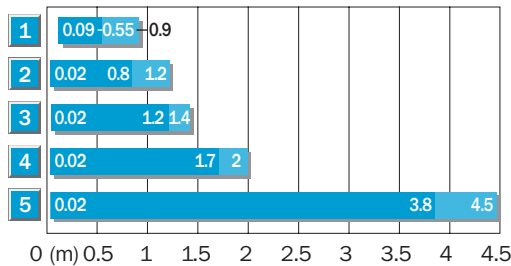
¹⁾ Average service life 100,000 h at T_a = +25 °C

²⁾ Limit values
³⁾ May not exceed or fall short of

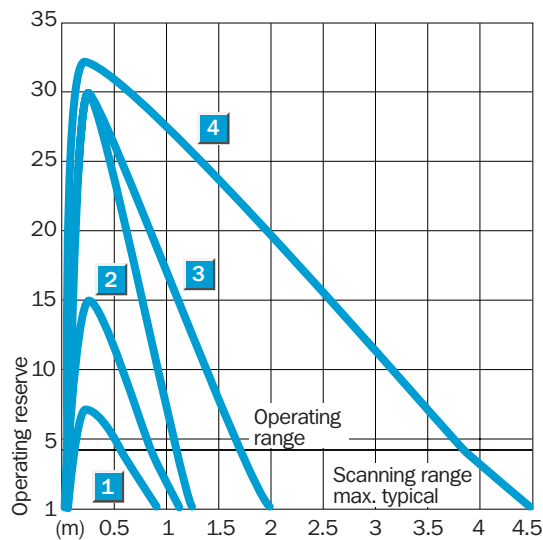
V_s tolerances
⁴⁾ Without load

⁵⁾ Signal transit time with resistive load
⁶⁾ With light/dark ratio 1:1
⁷⁾ Do not bend below 0 °C

Scanning range



Reflector type	Operating range
1 REF-IRF-56	0.09 ... 0.55 m
2 PL10F	0.02 ... 0.8 m
3 PL20A	0.02 ... 1.2 m
4 PL40A	0.02 ... 1.7 m
5 PL80A	0.02 ... 3.8 m



Ordering information

Type	Order No.
WLG4-3E1134	1 028 133
WLG4-3E1332	1 028 131
WLG4-3E2132	1 028 132
WLG4-3F2234	1 028 130
WLG4-3F3132	1 028 128

Australia

Phone +61 3 9497 4100
1800 33 48 02 - tollfree
E-Mail sales@sick.com.au

Belgium/Luxembourg

Phone +32 (0)2 466 55 66
E-Mail info@sick.be

Brasil

Phone +55 11 5091-4900
E-Mail sac@sick.com.br

Ceská Republika

Phone +420 2 57 91 18 50
E-Mail sick@sick.cz

China

Phone +852-2763 6966
E-Mail ghk@sick.com.hk

Danmark

Phone +45 45 82 64 00
E-Mail sick@sick.dk

Deutschland

Phone +49 (0)2 11 53 01-250
E-Mail info@sick.de

España

Phone +34 93 480 31 00
E-Mail info@sick.es

France

Phone +33 1 64 62 35 00
E-Mail info@sick.fr

Great Britain

Phone +44 (0)1727 831121
E-Mail info@sick.co.uk

India

Phone +91-22-2822 7084
E-Mail info@sick-india.com

Italia

Phone +39 02 27 40 93 19
E-Mail info@sick.it

Japan

Phone +81 (0)3 3358 1341
E-Mail info@sick.jp

Nederlands

Phone +31 (0)30 229 25 44
E-Mail info@sick.nl

Norge

Phone +47 67 81 50 00
E-Mail austefjord@sick.no

Österreich

Phone +43 (0)22 36 62 28 8-0
E-Mail office@sick.at

Polska

Phone +48 22 837 40 50
E-Mail info@sick.pl

Republic of Korea

Phone +82-2 786 6321/4
E-Mail kang@sickkorea.net

Republika Slovenija

Phone +386 (0)1-47 69 990
E-Mail office@sick.si

Russia

Phone +7 95 775 05 30
E-Mail info@sick-automation.ru

Schweiz

Phone +41 41 619 29 39
E-Mail contact@sick.ch

Singapore

Phone +65 6744 3732
E-Mail admin@sicksgp.com.sg

Suomi

Phone +358-9-25 15 800
E-Mail sick@sick.fi

Sverige

Phone +46 8 680 64 50
E-Mail info@sick.se

Taiwan

Phone +886 2 2365-6292
E-Mail sickgrc@ms6.hinet.net

Türkiye

Phone +90 216 388 95 90 pbx
E-Mail info@sick.com.tr

USA/Canada/México

Phone +1(952) 941-6780
1 800-325-7425 - tollfree
E-Mail info@sickusa.com

More representatives and agencies
in all major industrial nations at
www.sick.com